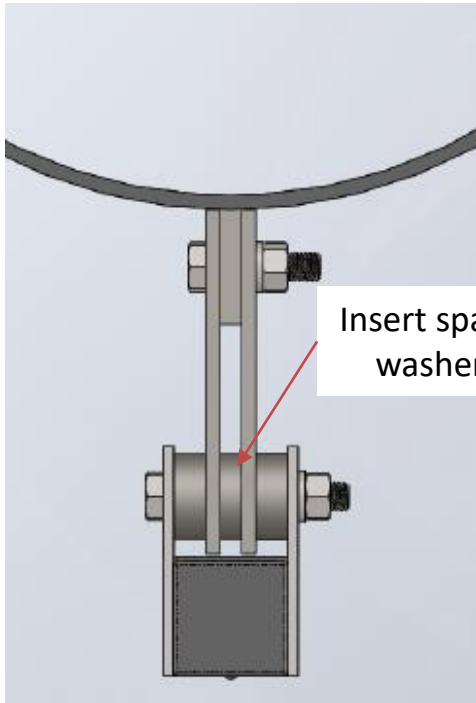
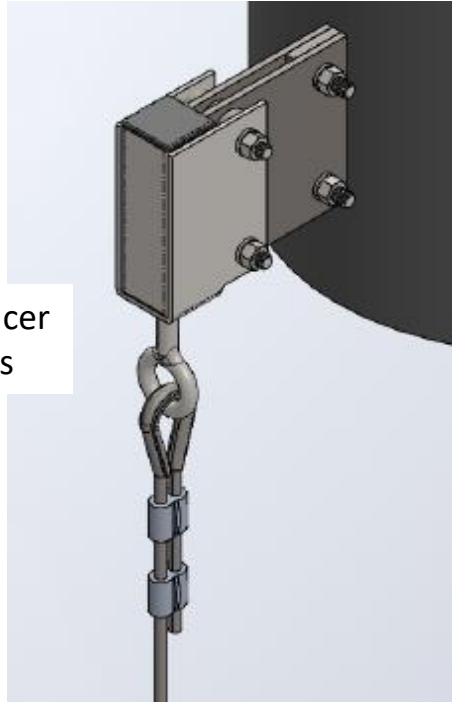


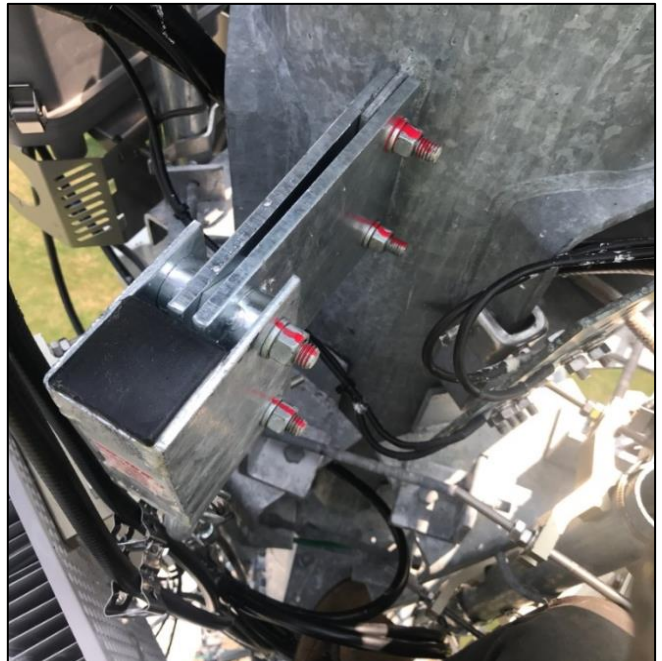
Monopole Head Extension



Insert spacer washers



- Monopole Head Extension Brackets provide a total of 9 inches clearance off the face of the pole to the center line of safe climb.
- Monopole Head Extension Brackets have been load tested to 5000 lbs. This anchorage will provide an engineered connection for a minimum (2) person simultaneous safe climb use with a TUF-TUG System.
- Torque fasteners to approximately 45 ft.lbs. and mark fasteners.
- Inspect security and condition with each use.



Note: This is a multi-purpose kit. Depending on the application, various components may not be used.



CABLE SAFE CLIMB SYSTEM HEAD EXTENSION KIT FOR CHANNEL WELDMENTS HEAD EXTENSION KIT

A) Attach assembly to channel weldment with (2) each washers on either side



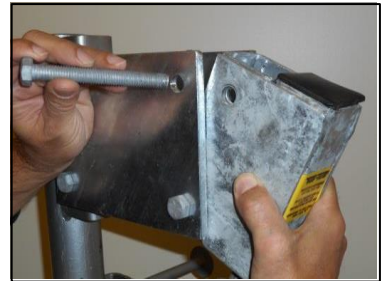
B) Finish connection with nuts and lock washers, attached finger tight



C) Install tube reinforcement in head assembly



D) Insert ½" bolts through both sides of assembly



E) Attach nuts and torque to 45 ft.lb. and mark fasteners.



F) Completed installation



- Extends CSCS to 9" off face of climb facility
- Inspect security and condition with each use

Note: This is a multi-purpose kit. Depending on the application, various components may not be used.