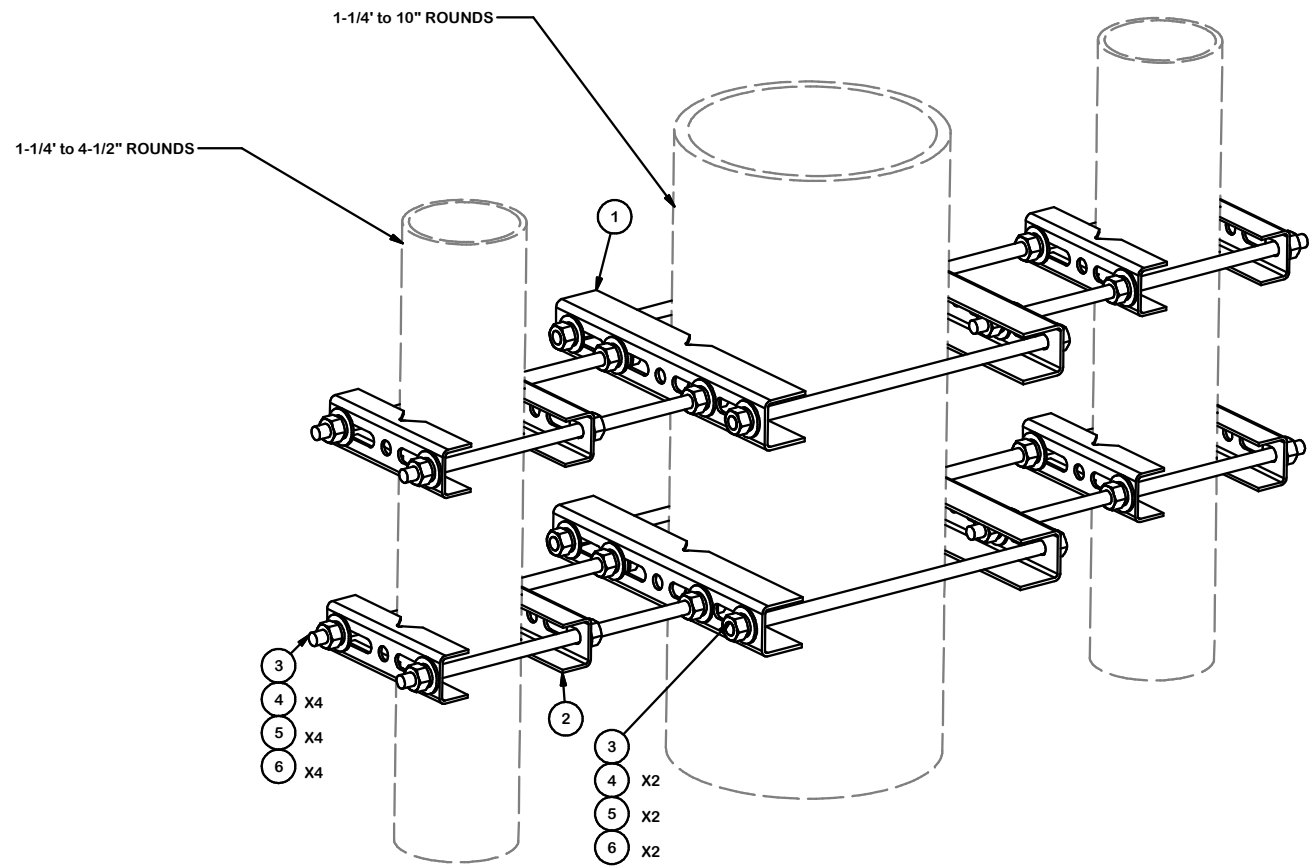


PARTS LIST						
ITEM	QTY	PART NO.	PART DESCRIPTION	LENGTH	UNIT WT.	NET WT.
1	4	X-UPC2	LARGE PIPE TO PIPE BRACKET	13 1/2 in	2.37	9.49
2	8	X-UPC1	SMALL PIPE TO PIPE BRACKET	6 3/4 in	0.86	6.86
3	12	G12R-15	1/2" x 15" GALV. THREADED ROD		0.84	10.04
4	40	G12FW	1/2" HDG USS FLATWASHER	3/32 in	0.03	1.36
5	40	G12LW	1/2" HDG LOCKWASHER	1/8 in	0.01	0.56
6	40	G12NUT	1/2" HDG HEAVY 2H HEX NUT		0.07	2.87
					TOTAL WT. #	31.17



TOLERANCE NOTES
TOLERANCES ON DIMENSIONS, UNLESS OTHERWISE NOTED ARE:
SAWED, SHEARED AND GAS CUT EDGES (± 0.030 ")
DRILLED AND GAS CUT HOLES (± 0.030 ") - NO CONING OF HOLES
LASER CUT EDGES AND HOLES (± 0.010 ") - NO CONING OF HOLES
BENDS ARE $\pm 1/2$ DEGREE
ALL OTHER MACHINING (± 0.030 ")
ALL OTHER ASSEMBLY (± 0.060 ")

PROPRIETARY NOTE:
 THE DATA AND TECHNIQUES CONTAINED IN THIS DRAWING ARE PROPRIETARY INFORMATION OF VALMONT INDUSTRIES AND CONSIDERED A TRADE SECRET. ANY USE OR DISCLOSURE WITHOUT THE CONSENT OF VALMONT INDUSTRIES IS STRICTLY PROHIBITED.

DESCRIPTION		
3 WAY PIPE TO PIPE KIT DUAL LEVEL		
CPD NO.	DRAWN BY	ENG. APPROVAL
	CEK 11/6/2017	
CLASS	SUB	DRAWING USAGE
81	02	CUSTOMER
		CHECKED BY
		BMC 2/20/2019

	Engineering Support Team: 1-888-753-7446	Locations: New York, NY Atlanta, GA Los Angeles, CA Plymouth, IN Salem, OR Dallas, TX
	A valmont COMPANY	
PART NO.	3WPP-UPC	
DWG. NO.	3WPP-UPC	

REV	DESCRIPTION OF REVISIONS	CPD	BY	DATE
1	CLARIFIED ROUND LEG DIMENSION		JET	6/2/2021
REVISION HISTORY				