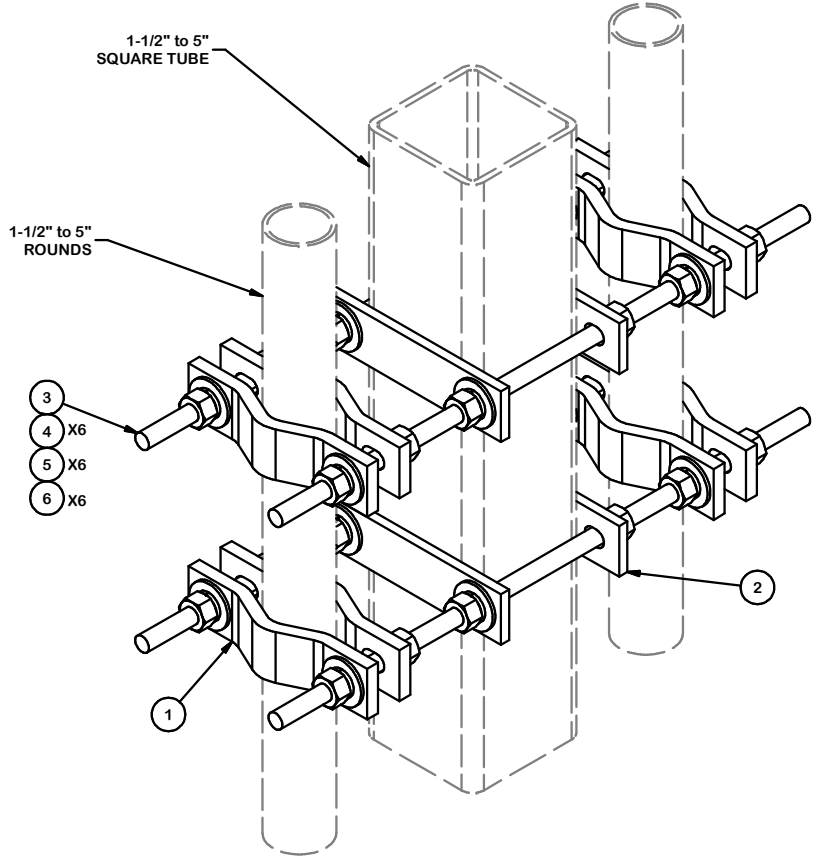


PARTS LIST						
ITEM	QTY	PART NO.	PART DESCRIPTION	LENGTH	UNIT WT.	NET WT.
1	8	DCP	1/2" THICK, 5-3/4" CNTER TO CENTER CLAMP HALF	8 1/8 in	2.36	18.90
2	4	WM1665-P	3/8" X 2" FLAT STOCK	8 5/16 in	1.76	7.05
3	4	G58R-24	5/8" x 24" THREADED ROD (HDG.)		2.09	8.36
4	24	G58FW	5/8" HDG USS FLATWASHER	1/8 in	0.07	1.69
5	24	G58LW	5/8" HDG LOCKWASHER		0.03	0.63
6	24	G58NUT	5/8" HDG HEAVY 2H HEX NUT		0.13	3.12
					TOTAL WT. #	39.75



TOLERANCE NOTES

TOLERANCES ON DIMENSIONS, UNLESS OTHERWISE NOTED ARE:
 SAWED, SHEARED AND GAS CUT EDGES ($\pm 0.030"$)
 DRILLED AND GAS CUT HOLES ($\pm 0.030"$) - NO CONING OF HOLES
 LASER CUT EDGES AND HOLES ($\pm 0.010"$) - NO CONING OF HOLES
 BENDS ARE $\pm 1/2$ DEGREE
 ALL OTHER MACHINING ($\pm 0.030"$)
 ALL OTHER ASSEMBLY ($\pm 0.060"$)

PROPRIETARY NOTE:
 THE DATA AND TECHNIQUES CONTAINED IN THIS DRAWING ARE PROPRIETARY INFORMATION OF VALMONT INDUSTRIES AND CONSIDERED A TRADE SECRET. ANY USE OR DISCLOSURE WITHOUT THE CONSENT OF VALMONT INDUSTRIES IS STRICTLY PROHIBITED.

DESCRIPTION
 3 WAY PIPE TO PIPE KIT
 DUAL LEVEL

SITE PRO 1
 Engineering Support Team:
 1-888-753-7446

Locations:
 New York, NY
 Atlanta, GA
 Los Angeles, CA
 Plymouth, IN
 Salem, OR
 Dallas, TX

A valmont COMPANY

REV	DESCRIPTION OF REVISIONS	CPD	BY	DATE
1	CLARIFIED MEMBER LEG DIMENSION		JET	6/2/2021

CPD NO.	DRAWN BY	ENG. APPROVAL
	CEK 11/6/2017	
CLASS	SUB	DRAWING USAGE
81	02	CUSTOMER

PART NO.	DWG. NO.
3WPP2	3WPP2