

SPECIFICATIONS

For patents see www.cf-pat.com

General	PIM Shield Cable Support Bars provide a low passive intermodulation mounting system to secure multiple Hybrid Snap-ins (sold separately) in high risk PIM zones. The Pole Mount Kit includes one Cable Support Bar plus all hardware required to secure the bar to a pole. An Extra Bar Kit can be added (sold separately) to double the number of connection points.
Grip range	2.37-inch to 4.5-inch OD pipe (2-inch to 4-inch nominal pipe)
Snap-In mounting holes	13 x 0.75-inch diameter
Bar dimensions	19.0-inch x 3.9-inch x 0.14-inch thick
Hardware size	½-13 UNC, 10-inch Threaded Rod length
System PIM performance	IM3 <-100 dBm when tested in accordance with proposed IEC 62037-8, near field test, 2x 20W test tones, while subjected to dynamic stimulus. To achieve specified PIM performance, torque hardware to 20 FT-LB (ConcealFab tool 900413)
Material	Galvanized Steel
Operating temperature	-40°C to +70°C
Case dimensions	8-inch x 4.5-inch x 20-inch
Case weight	31.1 lb.
Qty per Case	5

June 2022

Installation Instructions

900352-01 – PIM Cable Support Bar, Pole Mount Kit, 13 Position

900352-02 – PIM Cable Support Bar, Pole Mount Kit, 13 Position, Extended Range

STEP 1

Attach threaded rods to bracket, set to correct offset length. (Torque greater than 20 Ft-lb)

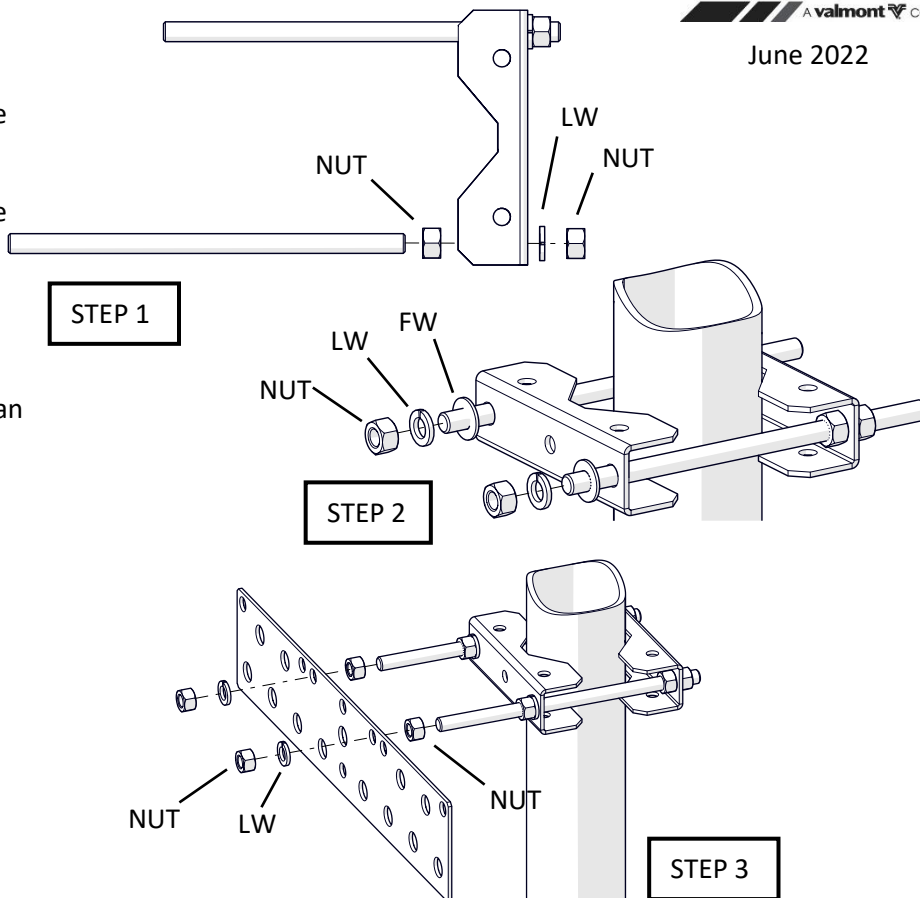
STEP 2

Attach saddle brackets to pole.

STEP 3

Attach 13 Position Bar to threaded rods.

Torque: 20 Ft-lb all connections
(ConcealFab Tool PN: 900413)



900352 INSTALLATION INSTRUCTIONS

June 2022

Installation Instructions

900352-01 – PIM Cable Support Bar, Pole Mount Kit, 13 Position

900352-02 – PIM Cable Support Bar, Pole Mount Kit, 13 Position, Extended Range

STEP 1

Attach threaded rods to bracket, set to correct offset length. (Torque greater than 20 Ft-lb)

STEP 2

Attach saddle brackets to pole.

STEP 3

Attach 13 Position Bar to threaded rods.

Torque: 20 Ft-lb all connections
(ConcealFab Tool PN: 900413)

