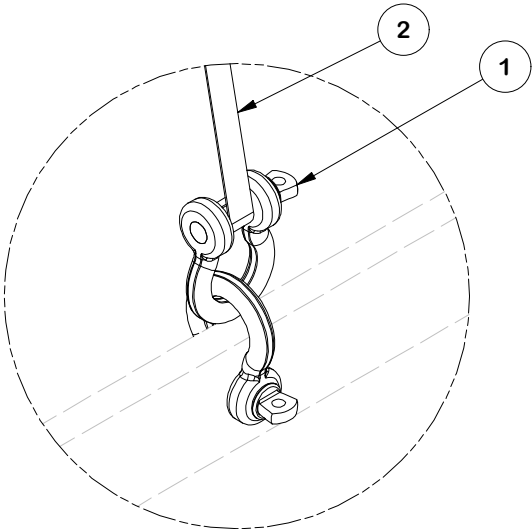
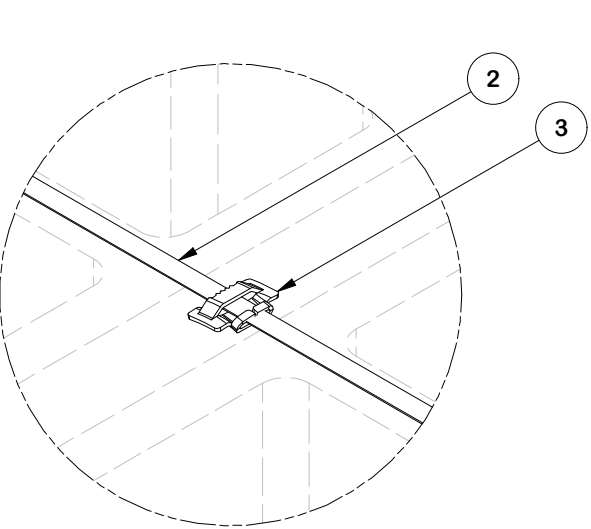
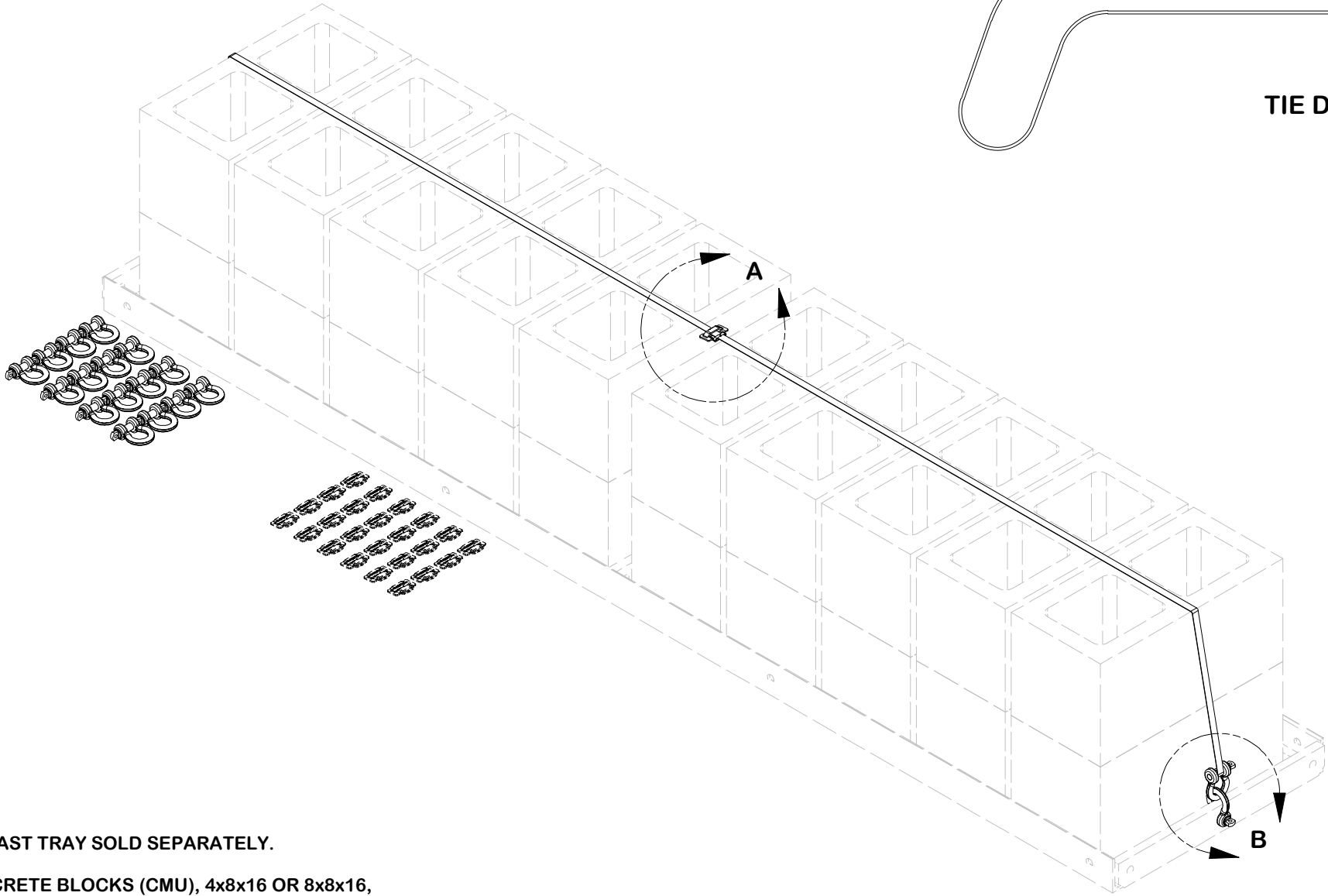
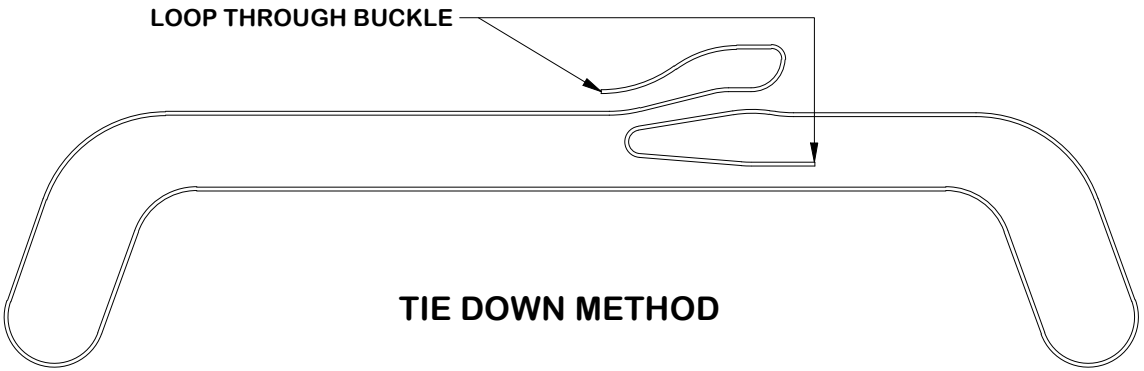


PARTS LIST						
ITEM	QTY	PART NO.	PART DESCRIPTION	LENGTH	UNIT WT.	NET WT.
1	20	SHK38	3/8" SHACKLE		0.31	6.25
2	1	BA204	1/2" X 100'-0" STAINLESS STEEL BANDING	1200 in	5.20	5.20
3	1	BU256-25	1/2" BANDING BUCKLE 25 PACK		0.04	0.04
					TOTAL WT. #	11.49



NOTES:

1. BALLAST TRAY SOLD SEPARATELY.
2. CONCRETE BLOCKS (CMU), 4x8x16 OR 8x8x16, ARE TYPICALLY USED FOR BALLAST.
3. MAX SETUP IS 16" HIGH X 87" LONG USING PROVIDED BANDING.

TOLERANCE NOTES

TOLERANCES ON DIMENSIONS, UNLESS OTHERWISE NOTED ARE:  
SAWED, SHEARED AND GAS CUT EDGES ( $\pm 0.030"$ )  
DRILLED AND GAS CUT HOLES ( $\pm 0.030"$ ) - NO CONING OF HOLES  
LASER CUT EDGES AND HOLES ( $\pm 0.010"$ ) - NO CONING OF HOLES  
BENDS AND ANGLES ARE  $\pm 1/2$  DEGREE  
ALL OTHER MACHINING ( $\pm 0.030"$ )  
ALL OTHER ASSEMBLY ( $\pm 0.060"$ )

PROPRIETARY NOTE:  
THE DATA AND TECHNIQUES CONTAINED IN THIS DRAWING ARE PROPRIETARY INFORMATION OF VALMONT INDUSTRIES AND CONSIDERED A TRADE SECRET. ANY USE OR DISCLOSURE WITHOUT THE CONSENT OF VALMONT INDUSTRIES IS STRICTLY PROHIBITED.

DESCRIPTION

BANDING BALLAST TIE DOWN KIT

CPD NO.		DRAWN BY	ENG. APPROVAL
		CMFL 3/30/2023	
CLASS	SUB	DRAWING USAGE	CHECKED BY
87	02	SHOP	

SITE PRO 1

A valmont COMPANY

Engineering Support Team:  
1-888-753-7446

PART NO.	BAND-BTD
DWG. NO.	BAND-BTD