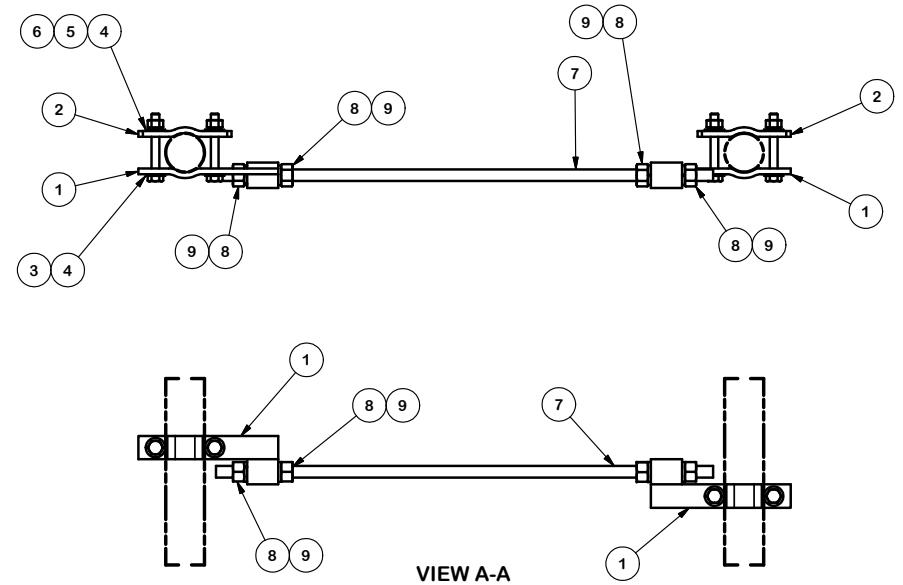


PARTS LIST						
ITEM	QTY	PART NO.	PART DESCRIPTION	LENGTH	UNIT WT.	NET WT.
1	6	X-BOB34	3/4" BRACKET WELDMENT		1.48	8.90
2	6	X-100064	CLAMP (S) (4" V-CLAMP) GALVANIZED		0.91	5.48
3	12	G1204	1/2" UNC HEX BOLT (GRADE 5)	4	0.29	3.45
4	24	G12FW	1/2" FLAT WASHER		0.03	0.69
5	12	G12LW	1/2" LOCK WASHER		0.01	0.16
6	12	G12NUT	1/2" UNC HEX NUT (A563)		0.07	0.86
7	3	G34R-45-B7	3/4" THREADED ROD (HDG.) X 45"	FIELD CUT	5.66	16.98
8	12	G34NUT	3/4" UNC HEX NUT (A563)		0.21	2.55
9	12	G34LW	3/4" LOCK WASHER		0.04	0.51
					TOTAL WT. #	39.58

NOTE: FLAT WASHERS ARE REQUIRED AT EVERY SLOTTED HOLE.  
(UNDER BOLT HEAD AND UNDER LOCK WASHER)



**TOLERANCE NOTES**  
 TOLERANCES ON DIMENSIONS, UNLESS OTHERWISE NOTED ARE:  
 SAWED, SHEARED AND GAS CUT EDGES ( $\pm 0.030"$ )  
 DRILLED AND GAS CUT HOLES ( $\pm 0.030"$ ) - NO CONING OF HOLES  
 LASER CUT EDGES AND HOLES ( $\pm 0.010"$ ) - NO CONING OF HOLES  
 BENDS ARE  $\pm 1/2$  DEGREE  
 ALL OTHER MACHINING ( $\pm 0.030"$ )  
 ALL OTHER ASSEMBLY ( $\pm 0.060"$ )

PROPRIETARY NOTE:  
 THE DATA AND TECHNIQUES CONTAINED IN THIS DRAWING ARE PROPRIETARY INFORMATION OF VALMONT INDUSTRIES AND CONSIDERED A TRADE SECRET. ANY USE OR DISCLOSURE WITHOUT THE CONSENT OF VALMONT INDUSTRIES IS STRICTLY PROHIBITED.

DESCRIPTION		
ADJ BOLT-ON-BRACE ASSEMBLY 3/4" THRD ROD		
CPD NO.	DRAWN BY	ENG. APPROVAL
	KC8 12/1/2015	
CLASS	DRAWING USAGE	CHECKED BY
	CUSTOMER	BMC 12/1/2015

 A valmont COMPANY	Locations: New York, NY Atlanta, GA Los Angeles, CA Plymouth, IN Salem, OR Dallas, TX
	Engineering Support Team: 1-888-753-7446
PART NO.	BOB34
DWG. NO.	BOB34