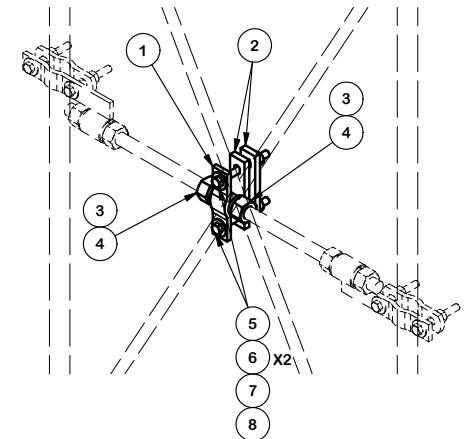


PARTS LIST						
ITEM	QTY	PART NO.	PART DESCRIPTION	LENGTH	UNIT WT.	NET WT
1	1	SEE TABLE	ADJUSTABLE BOB CENTER CONN WELDMENT		0.93	.93
2	2	261264	1/2" FLAT PLATE (A36/A709 GR. 36)	6 in	1.68	3.37
3	2	SEE TABLE	LOCK WASHER (AT THREADED ROD)		0.09	.18
4	2	SEETABLE	UNC HEX NUT (AT THREADED ROD)		0.47	.94
5	2	G1205	1/2" x 5" HDG HEX BOLT GR5 FULL THREAD	5 in	0.33	.65
6	4	G12FW	1/2" HDG USS FLATWASHER	3/32 in	0.03	.12
7	2	G12LW	1/2" HDG LOCKWASHER	1/8 in	0.01	.02
8	2	G12NUT	1/2" HDG HEAVY 2H HEX NUT		0.07	.14

VARIABLE PART NUMBERS					
ADJ BOB DIA	KIT #	ITEM 1	ITEM 3	ITEM 4	TOTAL KIT WT
3/4"	BOB34-CEN	X-BOB34-CEN	G34LW	G34NUT	7.78
1"	BOB1-CEN	X-BOB1-CEN	G1LW	G1NUT	8.45
1-1/4"	BOB114-CEN	X-BOB114-CEN	G114LW	G114NUT	9.39



SEE SHEET 2
FOR OTHER APPLICATIONS

TOLERANCE NOTES

TOLERANCES ON DIMENSIONS, UNLESS OTHERWISE NOTED ARE:
 SAWED, SHEARED AND GAS CUT EDGES ($\pm 0.030"$)
 DRILLED AND GAS CUT HOLES ($\pm 0.030"$) - NO CONING OF HOLES
 LASER CUT EDGES AND HOLES ($\pm 0.010"$) - NO CONING OF HOLES
 BENDS ARE $\pm 1/2$ DEGREE
 ALL OTHER MACHINING ($\pm 0.030"$)
 ALL OTHER ASSEMBLY ($\pm 0.060"$)

PROPRIETARY NOTE:
 THE DATA AND TECHNIQUES CONTAINED IN THIS DRAWING ARE PROPRIETARY INFORMATION OF VALMONT INDUSTRIES AND CONSIDERED A TRADE SECRET. ANY USE OR DISCLOSURE WITHOUT THE CONSENT OF VALMONT INDUSTRIES IS STRICTLY PROHIBITED.

DESCRIPTION

CENTER CONNECTION
 BOBXXX-CEN
 CONNECTION ASSY

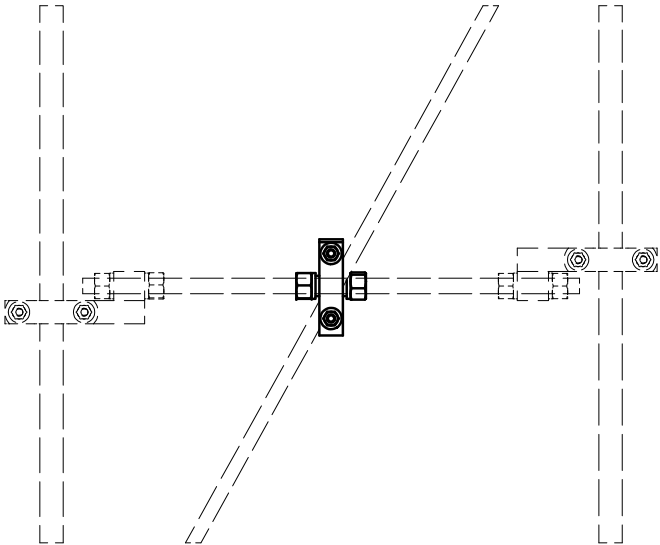
CPD NO.	DRAWN BY	ENG. APPROVAL
	KC8 10/25/2012	3RD PARTY
CLASS	DRAWING USAGE	CHECKED BY
81 02	CUSTOMER	BMC 2/8/2016



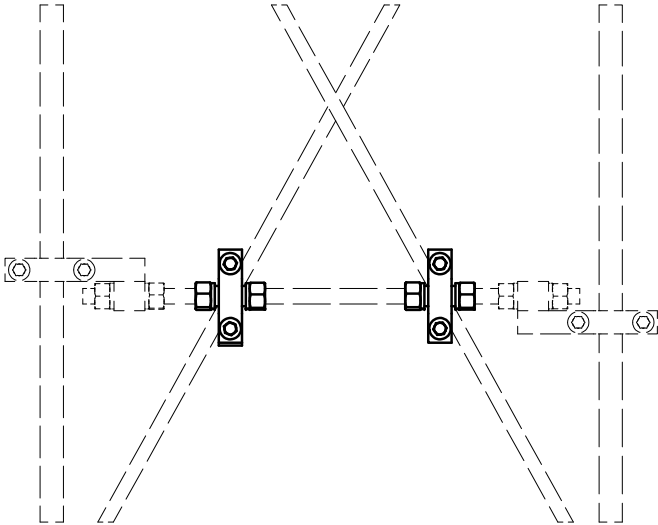
Locations:
 New York, NY
 Atlanta, GA
 Los Angeles, CA
 Plymouth, IN
 Salem, OR
 Dallas, TX
 Engineering Support Team:
 1-888-753-7446

PART NO.	BOBXXX-CEN
DWG. NO.	BOBXXX-CEN

OTHER APPLICATIONS



SINGLE DIAGONAL
WITH CENTER CONN ASSY



QUARTER PANEL
WITH (2) CENTER CONN ASSY

TOLERANCE NOTES

TOLERANCES ON DIMENSIONS, UNLESS OTHERWISE NOTED ARE:
SAWED, SHEARED AND GAS CUT EDGES ($\pm 0.030"$)
DRILLED AND GAS CUT HOLES ($\pm 0.030"$) - NO CONING OF HOLES
LASER CUT EDGES AND HOLES ($\pm 0.010"$) - NO CONING OF HOLES
BENDS ARE $\pm 1/2$ DEGREE
ALL OTHER MACHINING ($\pm 0.030"$)
ALL OTHER ASSEMBLY ($\pm 0.060"$)

PROPRIETARY NOTE:
THE DATA AND TECHNIQUES CONTAINED IN THIS DRAWING ARE PROPRIETARY INFORMATION OF VALMONT INDUSTRIES AND CONSIDERED A TRADE SECRET. ANY USE OR DISCLOSURE WITHOUT THE CONSENT OF VALMONT INDUSTRIES IS STRICTLY PROHIBITED.

DESCRIPTION
CENTER CONNECTION
BOBXXX-CEN
CONNECTION ASSY

CPD NO.		DRAWN BY	ENG. APPROVAL
		KC8 10/25/2012	3RD PARTY
CLASS	SUB	DRAWING USAGE	CHECKED BY
81	02	CUSTOMER	BMC 2/8/2016

SITE PRO 1
A valmont COMPANY

Locations:
New York, NY
Atlanta, GA
Los Angeles, CA
Plymouth, IN
Salem, OR
Dallas, TX

Engineering
Support Team:
1-888-753-7446

PART NO.	BOBXXX-CEN	PAGE
DWG. NO.	BOBXXX-CEN	2 OF 2