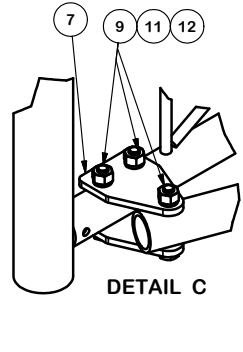
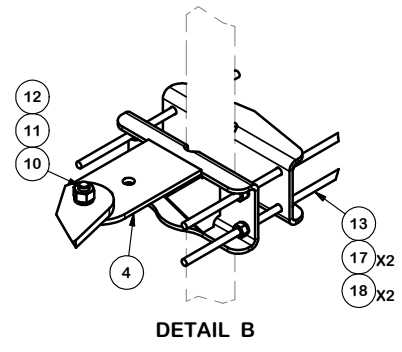
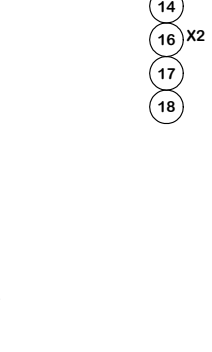
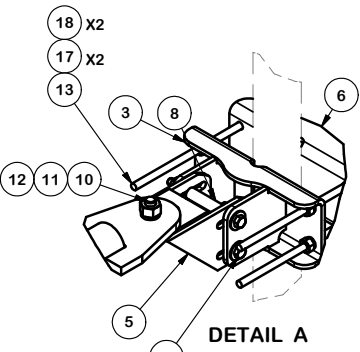
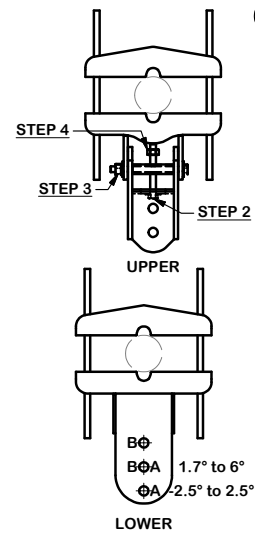


PARTS LIST						
ITEM	QTY	PART NO.	PART DESCRIPTION	LENGTH	UNIT WT.	NET WT.
1	1	X-160941	6' STANDOFF ARM		154.25	154.25
2	2	X-184158	STRUT ARM	144 in	96.67	193.34
3	1	X-SDTFLB	DIAGONAL SLOT WELDMENT FOR BCAM SD		15.08	15.08
4	1	X-SDMHTP	MULTI-HOLE TAPER PLATE WELDMENT		16.63	16.63
5	1	X-SDCAMSS	STRAIGHT SLOT WELDMENT FOR BCAM		8.48	8.48
6	2	X-LCBP2	BENT BACKING PLATE	12 in	8.86	17.73
7	4	X-183736	TIE BACK PLATE	7 1/4 in	3.98	15.92
8	1	X-SDCAMSP	POSITIONING PLATE WELDMENT FOR BCAM		1.43	1.43
9	6	A3405	3/4" UNC HEX BOLT (A325)	5 in	0.82	4.91
10	2	A34214	3/4"-10 X 2-1/4" A325 BOLT	2 1/4 in	0.47	0.95
11	8	G34LW	3/4" HDG LOCKWASHER		0.04	0.34
12	8	G34NUT	3/4" HDG HEAVY 2H HEX NUT		0.21	1.70
13	8	G12R-15	1/2" x 15" THREADED ROD (HDG.)		0.84	6.69
14	2	G12065	1/2" x 6-1/2" HDG HEX BOLT GR5 FULL THREAD	5 1/2 in	0.41	0.82
15	1	G12045	1/2" x 4.5" HDG HEX BOLT GR5 FULL THREAD	4 1/2 in	0.30	0.30
16	29	G12FW	1/2" HDG USS FLATWASHER	3/32 in	0.03	0.99
17	42	G12LW	1/2" HDG LOCKWASHER	1/8 in	0.01	0.58
18	43	G12NUT	1/2" HDG HEAVY 2H HEX NUT		0.07	3.08
19	2	SCX6	CROSSOVER PLATE	11 in	10.62	21.23
20	4	X-UB1300	1/2" X 3" X 5" X 2" U-BOLT (HDG.)		0.67	2.68
21	4	X-104223	CLAMP (6-5/8" V-CLAMP) GALVANIZED	8 11/16 in	1.35	5.41
22	8	G12R-10	1/2" x 10" THREADED ROD (HDG.)		0.56	4.46
					TOTAL WT. #	476.99

ANGLE CALIBRATING PROCEDURE:

- MEASURE TOWER TAPER AND PICK LOWER BRACKET HOLE:
 - HOLE A = -2.5° TO 2.5°
 - HOLE B = 1.7° TO 6°
- USE CALIBRATING BOLT TO ADJUST FRAME TO DESIRED TAPER
- TORQUE LOCKING BOLTS TO 50 ft.-lbs.
- ADVANCE LOCKING NUT TO POSITIONING PLATE, THEN TIGHTEN.



TOLERANCE NOTES
 TOLERANCES ON DIMENSIONS, UNLESS OTHERWISE NOTED ARE:
 SAWED, SHEARED AND GAS CUT EDGES ($\pm 0.030"$)
 DRILLED AND GAS CUT HOLES ($\pm 0.030"$) - NO CONING OF HOLES
 LASER CUT EDGES AND HOLES ($\pm 0.010"$) - NO CONING OF HOLES
 BENDS ARE $\pm 1/2$ DEGREE
 ALL OTHER MACHINING ($\pm 0.030"$)
 ALL OTHER ASSEMBLY ($\pm 0.060"$)

PROPRIETARY NOTE:
 THE DATA AND TECHNIQUES CONTAINED IN THIS DRAWING ARE PROPRIETARY INFORMATION OF VALMONT INDUSTRIES AND CONSIDERED A TRADE SECRET. ANY USE OR DISCLOSURE WITHOUT THE CONSENT OF VALMONT INDUSTRIES IS STRICTLY PROHIBITED.

DESCRIPTION		6' BOGNER ARM ASSEMBLY FITS 1-1/2" THRU 8-5/8" LEG DIA. STRAIGHT OR TAPERED SECTIONS	
CPD NO.	DRAWN BY	ENG. APPROVAL	
	CEK 2/13/2015		
CLASS	SUB	DRAWING USAGE	CHECKED BY
81	02	CUSTOMER	BMC 10/19/2018

<p>Engineering Support Team: 1-888-753-7446</p>	<p>Locations: New York, NY Atlanta, GA Los Angeles, CA Plymouth, IN Salem, OR Dallas, TX</p>
	<p>PART NO. BOG6</p>
<p>DWG. NO. BOG6</p>	<p>PAGE 1 OF 1</p>

REV	DESCRIPTION OF REVISIONS	CPD	BY	DATE
C	UPDATED BCAM VERSION 1 TO BCAM VERSION 2		CEK	10/19/2018
B	UPDATED TIE-BACK LEG CONNECTION		CEK	12/1/2017
A	UPDATED TOWER LEG CONNECTIONS		CEK	6/8/2017
REVISION HISTORY				