

PARTS LIST						
ITEM	QTY	PART NO.	PART DESCRIPTION	LENGTH	UNIT WT.	NET WT.
1	1	X-151837	TOP LEFT STAIR STRINGER	53 11/16 in	10.75	10.75
2	1	X-151839	BOTTOM LEFT STAIR STRINGER	46 3/8 in	9.24	9.24
3	1	X-151838	TOP RIGHT STAIR STRINGER	53 11/16 in	10.75	10.75
4	1	X-151840	BOTTOM RIGHT STAIR STRINGER	46 3/8 in	9.24	9.24
5	6	X-151744	STEP CONNECTION ANGLE	8 in	1.61	9.68
6	2	X-151841	BOTTOM CONNECTION ANGLE	12 in	9.54	19.07
7	2	X-151842	PLATFORM CONNECTION ANGLE	17 in	13.57	27.14
8	4	X-195909	BACKING PLATE	3 in	0.27	1.08
9	2	X-114016	LEVELING PLATE	4 in	2.24	4.47
10	2	G12R-6	1/2" x 6" THREADED ROD (HDG.)	6 in	3.23	6.45
11	62	G12NUT	1/2" UNC HEX NUT (A563)		0.07	4.16
12	68	G12FW	1/2" FLAT WASHER		0.03	2.25
13	58	G12LW	1/2" LOCK WASHER		0.01	0.80
14	3	X-151757	STEEL GRATING		33.61	100.84
15	6	X-151174	GRATING CONNECTION CLAMP		0.36	2.13
16	2	X-151843	STAIR CONNECTION PLATE	12 in	3.27	6.53
17	20	G1203	1/2" x 3" HDG HEX BOLT GR5 FULL THREAD	3 in	0.22	4.34
18	8	G1204	1/2" x 4" HDG HEX BOLT GR5 FULL THREAD	4 in	0.27	2.16
19	8	G1202	1/2" x 2" HDG HEX BOLT GR5	2 in	0.18	1.41
20	18	G12112	1/2" x 1-1/2" HDG HEX BOLT GR5	1 1/2 in	0.15	2.66
21	4	X-152105	TUBING CONNECTION PLATE		1.30	5.20
22	4	X-151844	RAILING SUPPORT TUBE	34 1/4 in	4.05	16.21
23	2	X-151753	SQUARE TUBE RAILING	74 in	8.83	17.65
<b>TOTAL WT. #</b>						<b>269.33</b>

**TOLERANCE NOTES**

TOLERANCES ON DIMENSIONS, UNLESS OTHERWISE NOTED ARE:  
 SAWED, SHEARED AND GAS CUT EDGES ( $\pm 0.030"$ )  
 DRILLED AND GAS CUT HOLES ( $\pm 0.030"$ ) - NO CONING OF HOLES  
 LASER CUT EDGES AND HOLES ( $\pm 0.010"$ ) - NO CONING OF HOLES  
 BENDS ARE  $\pm 1/2$  DEGREE  
 ALL OTHER MACHINING ( $\pm 0.030"$ )  
 ALL OTHER ASSEMBLY ( $\pm 0.060"$ )

PROPRIETARY NOTE:  
 THE DATA AND TECHNIQUES CONTAINED IN THIS DRAWING ARE PROPRIETARY INFORMATION OF VALMONT INDUSTRIES AND CONSIDERED A TRADE SECRET. ANY USE OR DISCLOSURE WITHOUT THE CONSENT OF VALMONT INDUSTRIES IS STRICTLY PROHIBITED.

DESCRIPTION  
**31.5" STEP ASSEMBLY FOR EQUIPMENT PLATFORM**

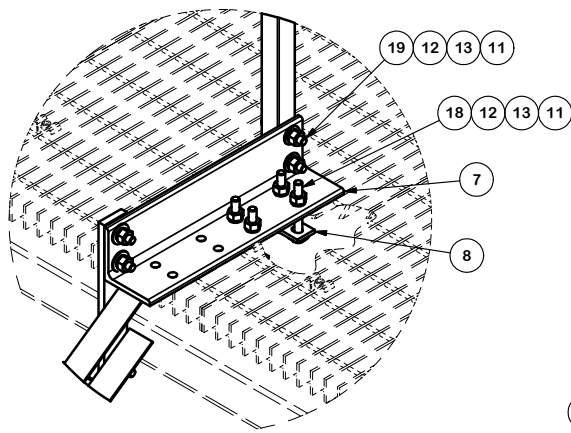
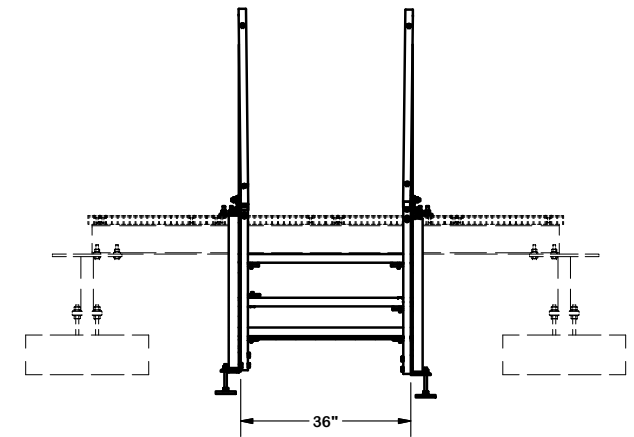
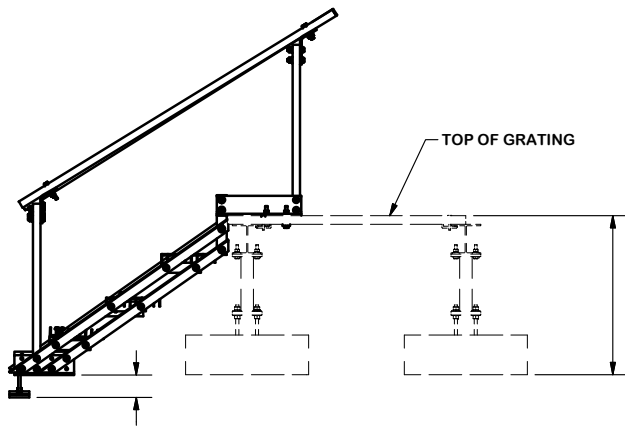
CPD NO.	DRAWN BY	ENG. APPROVAL
	KC8 10/2/2012	
CLASS	SUB	DRAWING USAGE
81	01	CUSTOMER
		CHECKED BY
		CEK 2/18/2013

**SITE PRO 1**  
 Engineering Support Team:  
 1-888-753-7446

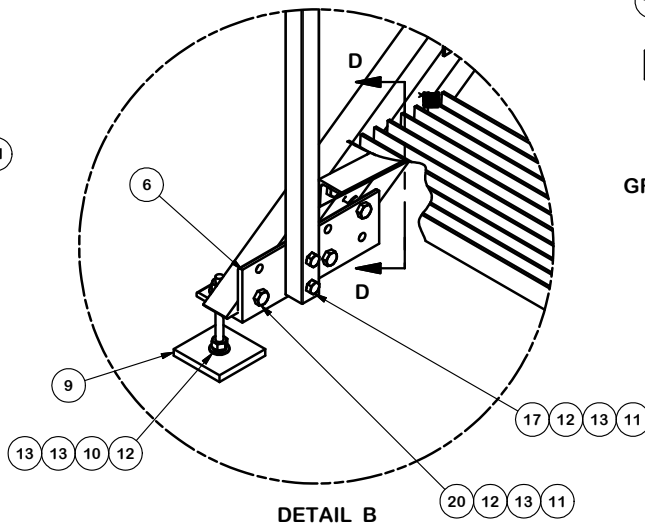
Locations:  
 New York, NY  
 Atlanta, GA  
 Los Angeles, CA  
 Plymouth, IN  
 Salem, OR  
 Dallas, TX

A valmont COMPANY

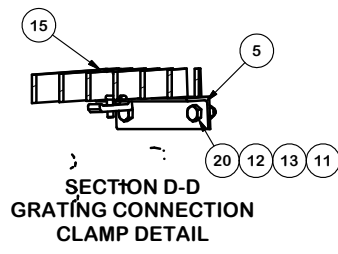
PART NO.	<b>BTS-SO</b>	PAGE
DWG. NO.	<b>BTS-SO</b>	<b>1 OF 2</b>



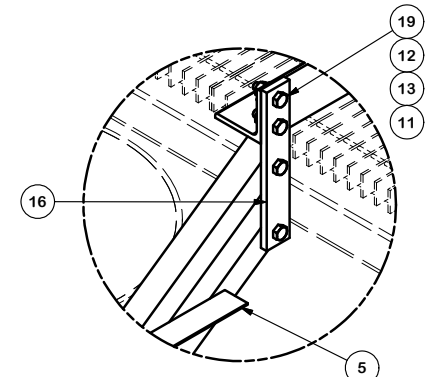
DETAIL A



DETAIL B



SECTION D-D  
GRATING CONNECTION  
CLAMP DETAIL



DETAIL C  
STEP GRATING  
NOT SHOWN FOR CLARITY

**TOLERANCE NOTES**

TOLERANCES ON DIMENSIONS, UNLESS OTHERWISE NOTED ARE:  
 SAWED, SHEARED AND GAS CUT EDGES ( $\pm 0.030"$ )  
 DRILLED AND GAS CUT HOLES ( $\pm 0.030"$ ) - NO CONING OF HOLES  
 LASER CUT EDGES AND HOLES ( $\pm 0.010"$ ) - NO CONING OF HOLES  
 BENDS ARE  $\pm 1/2$  DEGREE  
 ALL OTHER MACHINING ( $\pm 0.030"$ )  
 ALL OTHER ASSEMBLY ( $\pm 0.060"$ )

PROPRIETARY NOTE:  
 THE DATA AND TECHNIQUES CONTAINED IN THIS DRAWING ARE PROPRIETARY INFORMATION OF VALMONT INDUSTRIES AND CONSIDERED A TRADE SECRET. ANY USE OR DISCLOSURE WITHOUT THE CONSENT OF VALMONT INDUSTRIES IS STRICTLY PROHIBITED.

DESCRIPTION		31.5" STEP ASSEMBLY FOR EQUIPMENT PLATFORM
-------------	--	--

CPD NO.	DRAWN BY	ENG. APPROVAL
81	KC8	10/2/2012
CLASS	DRAWING USAGE	CHECKED BY
81	CUSTOMER	CEK 2/18/2013

**SITE PRO 1**  
 Engineering Support Team:  
 1-888-753-7446

Locations:  
 New York, NY  
 Atlanta, GA  
 Los Angeles, CA  
 Plymouth, IN  
 Salem, OR  
 Dallas, TX

A valmont COMPANY

PART NO.	BTS-SO	PAGE
DWG. NO.	BTS-SO	2 OF 2