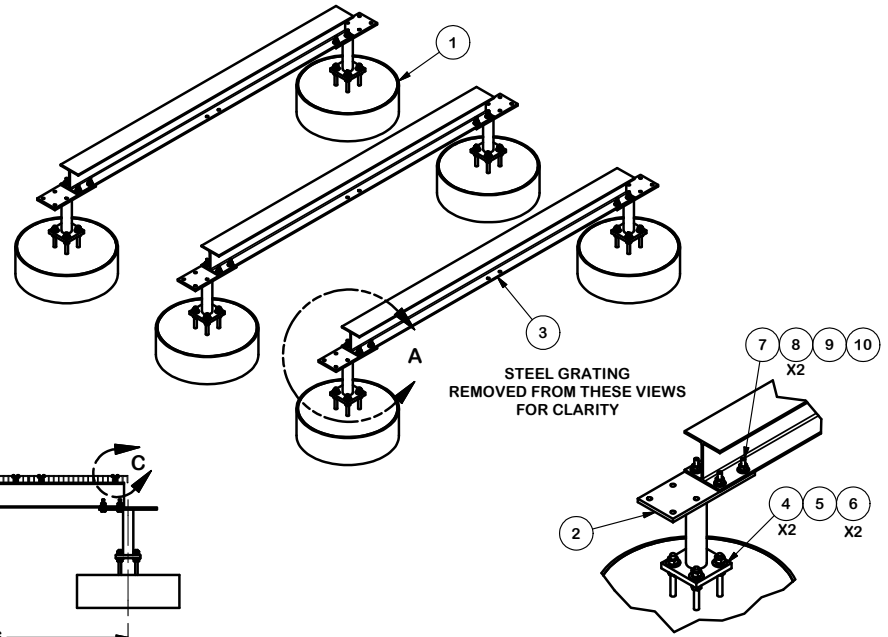
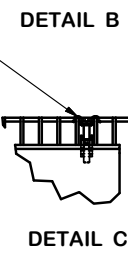
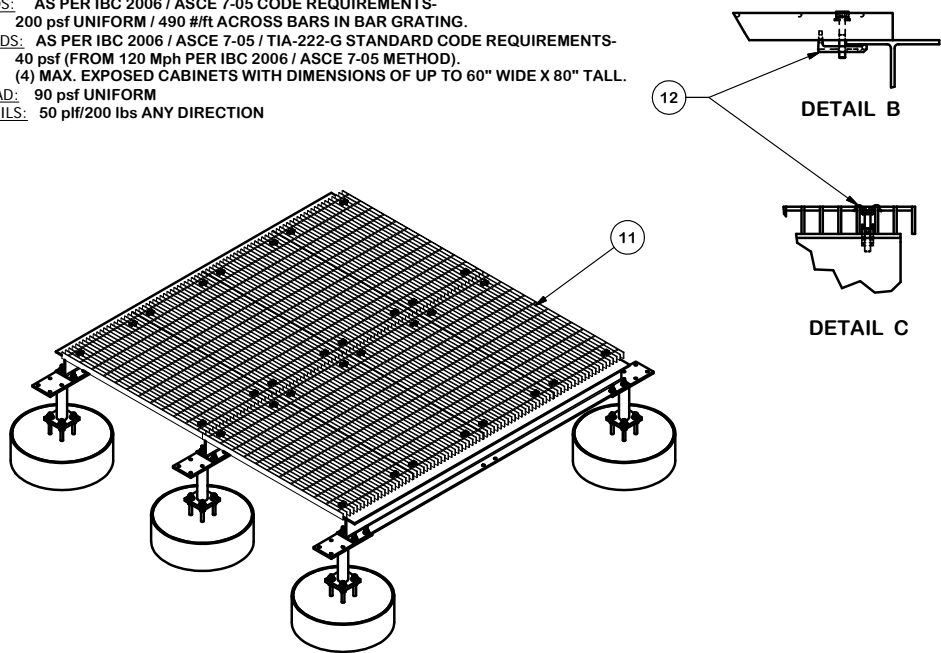
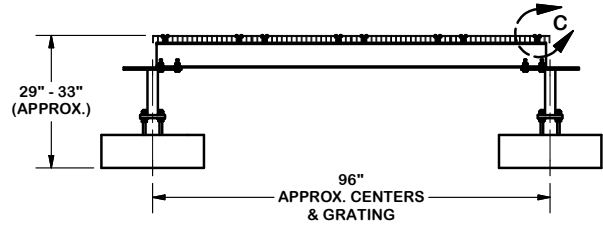
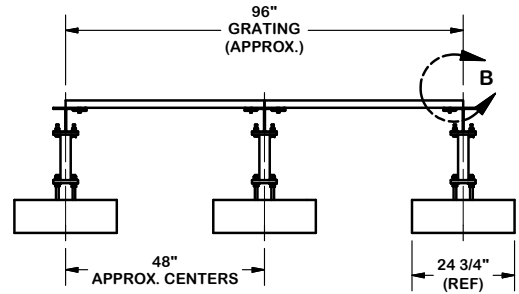


LOADING CONSIDERED:  
 DEAD LOADS: SELF-WEIGHT.  
 LIVE LOADS: AS PER IBC 2006 / ASCE 7-05 CODE REQUIREMENTS-  
 200 psf UNIFORM / 490 #/ft ACROSS BARS IN BAR GRATING.  
 WIND LOADS: AS PER IBC 2006 / ASCE 7-05 / TIA-222-G STANDARD CODE REQUIREMENTS-  
 40 psf (FROM 120 Mph PER IBC 2006 / ASCE 7-05 METHOD).  
 (4) MAX. EXPOSED CABINETS WITH DIMENSIONS OF UP TO 60" WIDE X 80" TALL.  
 SNOW LOAD: 90 psf UNIFORM  
 GUARD RAILS: 50 plf/200 lbs ANY DIRECTION

PARTS LIST						
ITEM	QTY	PART NO.	PART DESCRIPTION	LENGTH	UNIT WT.	NET WT.
1	6	PAD-C	CONCRETE PAD FOR PLATFORM		327.78	1966.68
2	6	X-151785	FOUNDATION CONNECTION ASSEMBLY FOR EQUIPMENT PLATFORM		35.97	215.85
3	3	X-151588	W6 X 15# WIDE FLANGE (Fy=35 Ksi Min)		123.90	371.70
4	48	G58FW	5/8" HDG USS FLATWASHER		0.07	3.38
5	21	G58LW	5/8" HDG LOCKWASHER		0.03	0.55
6	48	G58NUT	5/8" HDG HEAVY 2H HEX NUT		0.13	6.23
7	24	G12212	1/2" x 2-1/2" HDG HEX BOLT GR5	2 1/2 in	0.20	4.89
8	48	G12FW	1/2" HDG USS FLATWASHER		0.03	1.63
9	24	G12LW	1/2" HDG LOCKWASHER		0.01	0.33
11	8	X-151787	STEEL GRATING - 24"W X 48"-L - BEARING BAR 1 3/4" X 3/16"		97.27	778.12
12	32	X-151174	BAR GRATING CONNECTION (LGF037)		0.36	11.36
10	24	G12NUT	1/2" HDG HEAVY 2H HEX NUT		0.07	1.72
					TOTAL WT. #	3362.45



DETAIL A  
 LEVELING PLATE & CONNECTION ASSEMBLY  
 (TYPICAL FOR ALL BEAM TO BEAM CONNECTIONS)



**TOLERANCE NOTES**

TOLERANCES ON DIMENSIONS, UNLESS OTHERWISE NOTED ARE:  
 SAWED, SHEARED AND GAS CUT EDGES ( $\pm 0.030"$ )  
 DRILLED AND GAS CUT HOLES ( $\pm 0.030"$ ) - NO CONING OF HOLES  
 LASER CUT EDGES AND HOLES ( $\pm 0.010"$ ) - NO CONING OF HOLES  
 BENDS ARE  $\pm 1/2$  DEGREE  
 ALL OTHER MACHINING ( $\pm 0.030"$ )  
 ALL OTHER ASSEMBLY ( $\pm 0.060"$ )

PROPRIETARY NOTE:  
 THE DATA AND TECHNIQUES CONTAINED IN THIS DRAWING ARE PROPRIETARY INFORMATION OF VALMONT INDUSTRIES AND CONSIDERED A TRADE SECRET. ANY USE OR DISCLOSURE WITHOUT THE CONSENT OF VALMONT INDUSTRIES IS STRICTLY PROHIBITED.

DESCRIPTION		EQUIPMENT PLATFORM BASE UNIT ASSEMBLY 8' X 8'	
-------------	--	---	--

**SITE PRO 1**  
 Engineering Support Team:  
 1-888-753-7446

Locations:  
 New York, NY  
 Atlanta, GA  
 Los Angeles, CA  
 Plymouth, IN  
 Salem, OR  
 Dallas, TX

CPD NO.	DRAWN BY	ENG. APPROVAL
CLASS	DRAWING USAGE	CHECKED BY
81	01	CUSTOMER
		CEK 2/18/2013

PART NO.	BTS88-C
DWG. NO.	BTS88-C