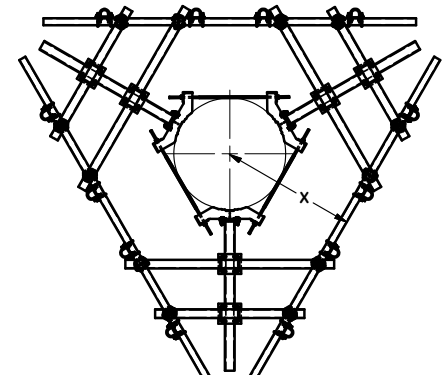
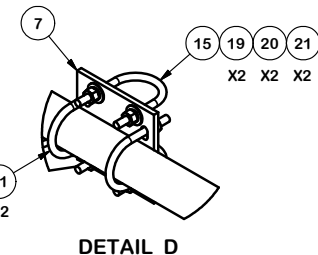


PARTS LIST						
ITEM	QTY	PART NO.	PART DESCRIPTION	LENGTH	UNIT WT.	NET WT.
1	3	X-LWRM	RING MOUNT WELDMENT		68.81	206.42
2	9	G58R-48	5/8" x 48" THREADED ROD (HDG.)	48	0.40	3.59
2	9	G58R-24	5/8" x 24" THREADED ROD (HDG.)	24	0.40	3.59
3	3	X-SNP-STL	PLATFORM STANDOFF ARM WELDMENT	60-3/4 in	105.60	316.79
4	12	SCX3	CROSSOVER PLATE	9.250 in	7.19	86.27
5	12	X-127594	FLAT DISK CLAMP PLATE 4" CENTERS (GALV.)		2.51	30.08
6	24	X-100064	CLAMP (4" V-CLAMP) GALVANIZED		0.91	21.91
7	12	SCX2	CROSSOVER PLATE	7.000 in	4.80	57.56
8	3	P384	3-1/2" X 84" (3" SCH 40) GALVANIZED PIPE	84	31.89	95.68
9	3	P360	3-1/2" X 60" (3" SCH 40) GALVANIZED PIPE	60	37.97	113.90
10	3	P30150	2-7/8" X 150" (2-1/2" SCH. 40) GALVANIZED PIPE	150.000 in	76.94	230.81
11	12	A58234	5/8" x 2-3/4" HDG A325 HEX BOLT	2.75	0.36	4.27
12	12	A58FW	5/8" HDG A325 FLATWASHER		0.03	0.41
13	30	G58LW	5/8" HDG LOCKWASHER		0.03	0.78
14	30	A58NUT	5/8" HDG A325 HEX NUT		0.13	3.90
15	24	X-UB1212	1/2" X 2-1/2" X 4-1/2" X 2" U-BOLT (HDG.)		0.26	6.17
15	48	X-UB1300	1/2" X 3" X 5" X 2" U-BOLT (HDG.)		0.70	33.45
16	12	X-UB1358	1/2" X 3-5/8" X 5-1/2" X 3" GALV U-BOLT		0.77	9.27
17	48	G1205	1/2" x 5" HDG HEX BOLT GR5 FULL THREAD	5	0.33	15.64
18	24	G12065	1/2" x 6-1/2" HDG HEX BOLT GR5 FULL THREAD	7-1/2	0.41	9.83
19	216	G12FW	1/2" HDG USS FLATWASHER	0.095	0.03	7.36
20	192	G12LW	1/2" HDG LOCKWASHER	.125	0.01	2.67
21	192	G12NUT	1/2" HDG HEAVY 2H HEX NUT		0.07	13.75
					TOTAL WT. #	2146.53



X = 57" MAX FOR A 12" POLE DIA  
X = 66" MAX FOR A 45" POLE DIA

**TOLERANCE NOTES**

TOLERANCES ON DIMENSIONS, UNLESS OTHERWISE NOTED ARE:  
 SAWED, SHEARED AND GAS CUT EDGES ( $\pm 0.030"$ )  
 DRILLED AND GAS CUT HOLES ( $\pm 0.030"$ ) - NO CONING OF HOLES  
 LASER CUT EDGES AND HOLES ( $\pm 0.010"$ ) - NO CONING OF HOLES  
 BENDS ARE  $\pm 1/2$  DEGREE  
 ALL OTHER MACHINING ( $\pm 0.030"$ )  
 ALL OTHER ASSEMBLY ( $\pm 0.060"$ )

PROPRIETARY NOTE:  
 THE DATA AND TECHNIQUES CONTAINED IN THIS DRAWING ARE PROPRIETARY INFORMATION OF VALMONT INDUSTRIES AND CONSIDERED A TRADE SECRET. ANY USE OR DISCLOSURE WITHOUT THE CONSENT OF VALMONT INDUSTRIES IS STRICTLY PROHIBITED.

DESCRIPTION  
 12' CAGE TOP

CPD NO.	DRAWN BY	ENG. APPROVAL
	KC8 2/24/2017	3RD PARTY
CLASS	DRAWING USAGE	CHECKED BY
81	CUSTOMER	BMC 5/10/2017

**SITE PRO 1**  
 Engineering Support Team:  
 1-888-753-7446  
 Locations:  
 New York, NY  
 Atlanta, GA  
 Los Angeles, CA  
 Plymouth, IN  
 Salem, OR  
 Dallas, TX

PART NO.	CAGE-TOP	PAGE 1 OF 1
DWG. NO.	CAGE-TOP	