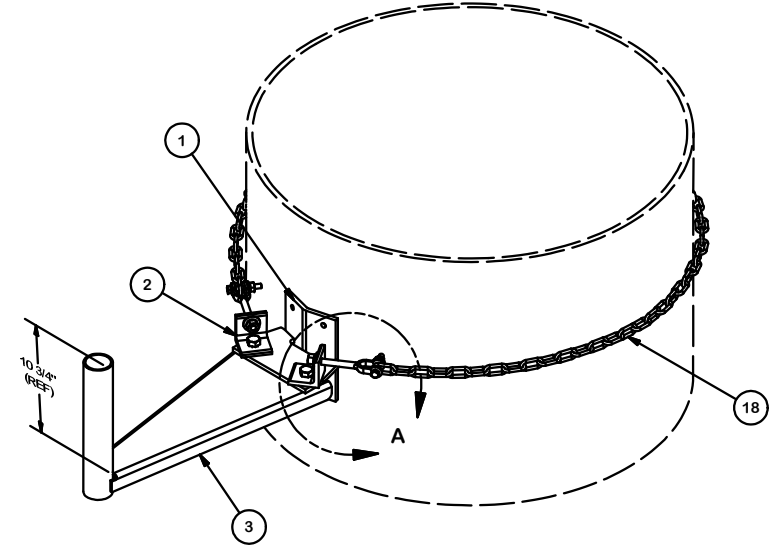
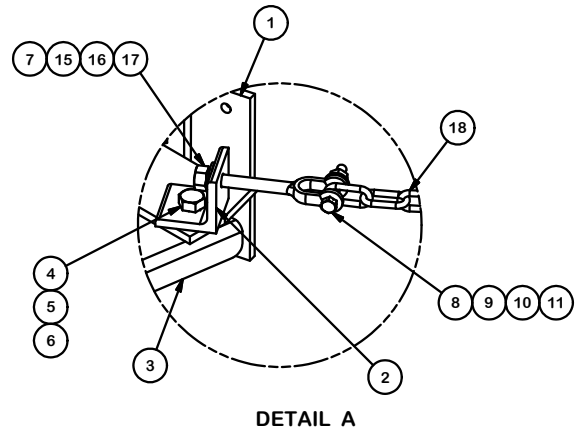


PARTS LIST						
ITEM	QTY	PART NO.	PART DESCRIPTION	LENGTH	UNIT WT.	NET WT.
1	1	X-CHGPS-W2	BENT PLATE WELDMENT		8.36	8.36
2	2	X-CHGPS-A	2 1/2 x 2 1/2 x 3/8 ANGLE	2 1/2 in	1.17	2.35
3	1	X-CHGPS-W1	PIPE WELDMENT		5.10	5.10
4	2	G5802	5/8" x 2" HDG HEX BOLT GR5		0.27	0.54
5	2	G58LW	5/8" HDG LOCKWASHER		0.03	0.05
6	2	G58NUT	5/8" HDG HEAVY 2H HEX NUT		0.13	0.26
7	2	JB4	1/2" JAW BOLT		0.45	0.89
8	2	G38212	3/8" x 2-1/2" HDG HEX BOLT GR5		0.10	0.20
9	2	G38FW	3/8" HDG USS FLATWASHER		0.01	0.02
10	2	G38LW	3/8" HDG LOCKWASHER		0.01	0.01
11	2	G38NUT	3/8" HDG HEAVY 2H HEX NUT		0.03	0.07
15	2	G12LW	1/2" HDG LOCKWASHER	1/8 in	0.01	0.03
16	2	G12FW	1/2" HDG USS FLATWASHER	3/32 in	0.03	0.07
17	2	G12NUT	1/2" HDG HEAVY 2H HEX NUT		0.07	0.14
18	1	GC4095	1/4" x GR40 GALV. CHAIN	114 in	4.44	4.44
					TOTAL WT. #	22.53



REV	DESCRIPTION OF REVISIONS	CPD	BY	DATE
A	UPDATED BOTH CHAIN CONNECTIONS TO JB4 AND HW		CEK	9/18/2017
REVISION HISTORY				

TOLERANCE NOTES
 TOLERANCES ON DIMENSIONS, UNLESS OTHERWISE NOTED ARE:
 SAWED, SHEARED AND GAS CUT EDGES ($\pm 0.030"$)
 DRILLED AND GAS CUT HOLES ($\pm 0.030"$) - NO CONING OF HOLES
 LASER CUT EDGES AND HOLES ($\pm 0.010"$) - NO CONING OF HOLES
 BENDS ARE $\pm 1/2$ DEGREE
 ALL OTHER MACHINING ($\pm 0.030"$)
 ALL OTHER ASSEMBLY ($\pm 0.060"$)

PROPRIETARY NOTE:
 THE DATA AND TECHNIQUES CONTAINED IN THIS DRAWING ARE PROPRIETARY INFORMATION OF VALMONT INDUSTRIES AND CONSIDERED A TRADE SECRET. ANY USE OR DISCLOSURE WITHOUT THE CONSENT OF VALMONT INDUSTRIES IS STRICTLY PROHIBITED.

DESCRIPTION		DRAWN BY		ENG. APPROVAL	
CHAIN MOUNT FOR ROUND POLES WITH 2-3/8 O.D. PIPE MOUNT (MICRO# B2069)		KC8 7/26/2012			
CPD NO.	DRAWING USAGE	CHECKED BY	DATE		
81	02 CUSTOMER	BMC	9/18/2017		

	Engineering Support Team: 1-888-753-7446	Locations: New York, NY Atlanta, GA Los Angeles, CA Plymouth, IN Salem, OR Dallas, TX
	A valmont COMPANY	
PART NO.	CHGPS	
DWG. NO.	CHGPS	