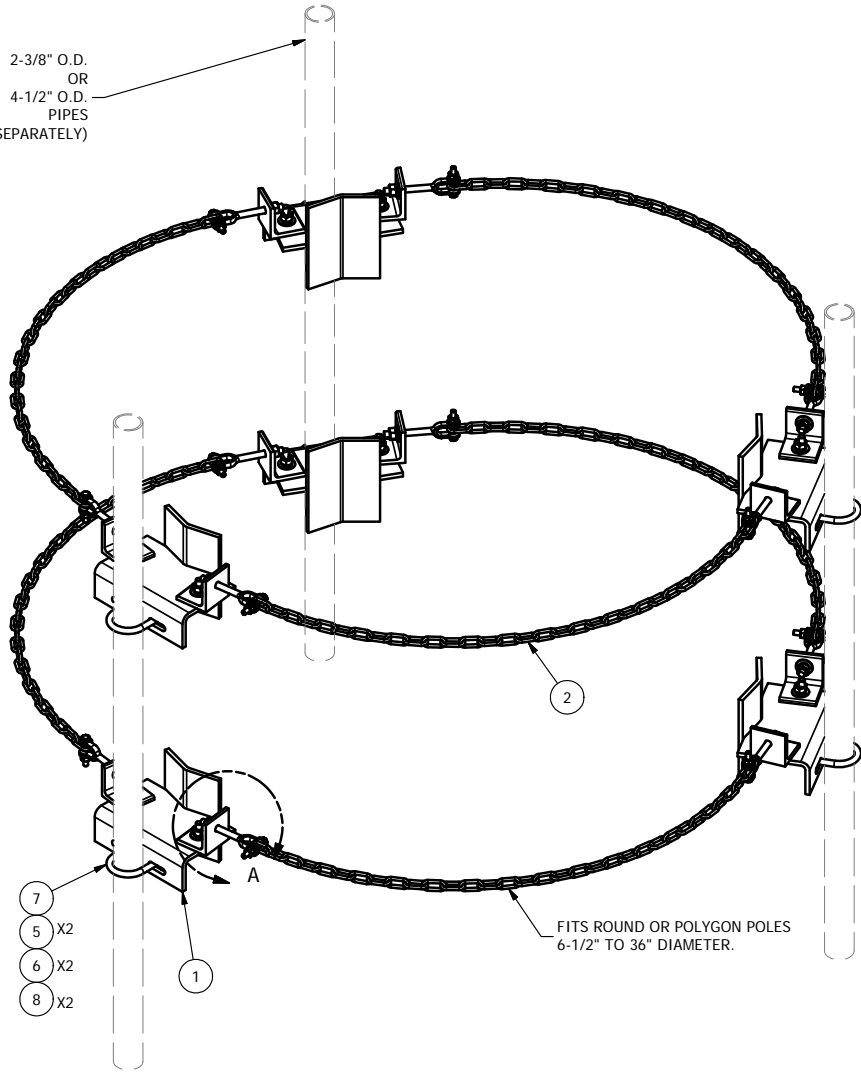


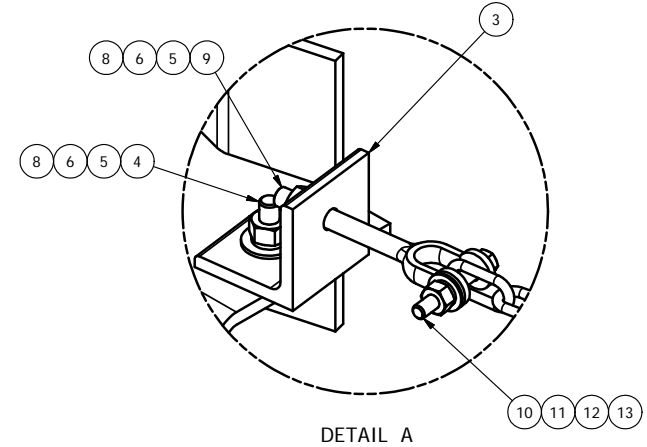
2-3/8" O.D.  
OR  
4-1/2" O.D.  
PIPES  
(ORDERED SEPARATELY)



FITS ROUND OR POLYGON POLES  
6-1/2" TO 36" DIAMETER.

- 7
- 5 X2
- 6 X2
- 8 X2

PARTS LIST						
ITEM	QTY	PART NO.	PART DESCRIPTION	LENGTH	UNIT WT.	NET WT.
1	6	SHCM-W	CHAIN MOUNT WELDMENT		14.59	87.55
2	6	GC40317	1/4" X GR40 GALV. CHAIN3.17'		1.94	11.66
3	12	SHCM-T	CHAIN MOUNT TIGHTENER BRACKET	3 in	1.84	22.09
4	12	G1202	1/2" x 2" HDG HEX BOLT GR5	2 in	0.18	2.11
5	36	G12FW	1/2" HDG USS FLATWASHER		0.03	1.23
6	36	G12LW	1/2" HDG LOCKWASHER		0.01	0.50
7	6	X-UB1212	1/2" X 2-1/2" X 4-1/2" X 2" U-BOLT (HDG.)		0.73	4.39
7	6	X-UB1458	1/2" X 4-5/8" X 7" X 3" U-BOLT (HDG.)		0.97	5.82
8	36	G12NUT	1/2" HDG HEAVY 2H HEX NUT		0.07	2.58
9	12	JB4	1/2" JAW BOLT (GALV)		0.45	5.35
10	12	G38212	3/8" x 2-1/2" HDG HEX BOLT GR5		0.10	1.23
11	12	G38FW	3/8" HDG USS FLATWASHER		0.01	0.14
12	12	G38LW	3/8" HDG LOCKWASHER		0.01	0.08
13	12	G38NUT	3/8" HDG HEAVY 2H HEX NUT		0.03	0.41
TOTAL WT. #						143.45



DETAIL A

**TOLERANCE NOTE**  
 TOLERANCES ON DIMENSIONS, UNLESS OTHERWISE NOTED ARE:  
 SAWED, SHEARED AND GAS CUT EDGES ( $\pm 0.030"$ )  
 DRILLED AND GAS CUT HOLES ( $\pm 0.030"$ ) - NO CONING OF HOLES  
 LASER CUT EDGES AND HOLES ( $\pm 0.010"$ ) - NO CONING OF HOLES  
 BENDS ARE  $\pm 1/2$  DEGREE - ALL OTHER MACHINING ( $\pm 0.030"$ )  
 ALL OTHER ASSEMBLY ( $\pm 0.060"$ )

**PROPRIETARY NOTE**  
 THE DATA AND TECHNIQUES CONTAINED IN THIS DRAWING ARE PROPRIETARY INFORMATION OF VALMONT INDUSTRIES AND CONSIDERED A TRADE SECRET. ANY USE OR DISCLOSURE WITHOUT THE CONSENT OF VALMONT INDUSTRIES IS STRICTLY PROHIBITED.

DESCRIPTION  
**TRIPLE SECTOR  
 CHAIN MOUNT**

DRAWN BY <b>CEK</b>	CPD NO. <b>1/13/2012</b>	DRAWING USAGE <b>semb</b>
ENG. APPROVAL	CHECKED BY <b>BMC</b>	CUSTOMER <b>1/16/2012</b>

**SITE PRO 1**  
 Engineering Support Team:  
 1-888-753-7446

Locations:  
 New York, NY  
 Atlanta, GA  
 Los Angeles, CA  
 Plymouth, IN  
 Salem, OR  
 Dallas, TX

PART NO. **CHM3**  
 DWG. NO. **CHM3**