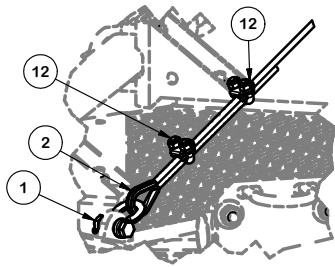
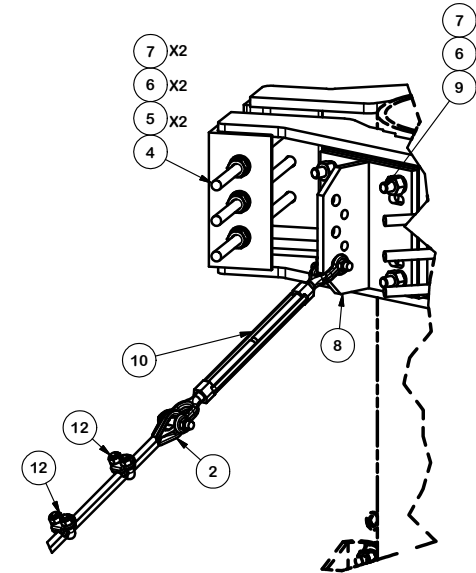
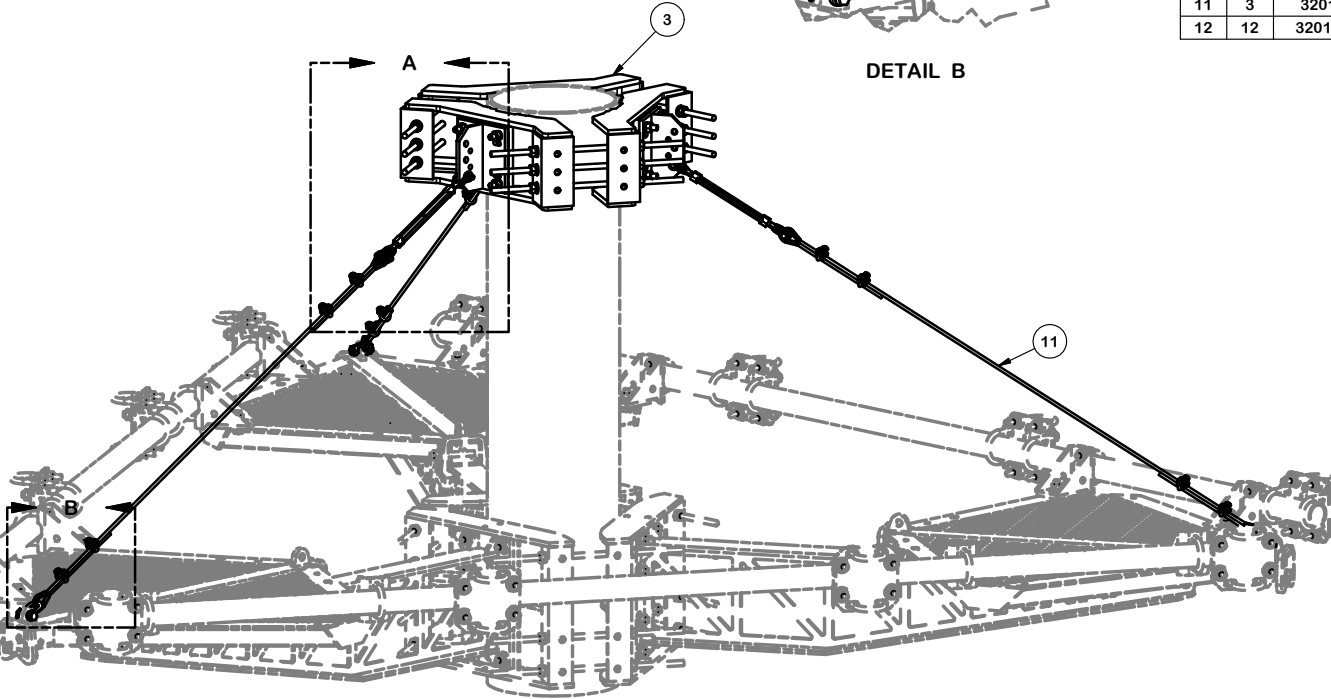


| PARTS LIST |     |            |                                |          |             |         |
|------------|-----|------------|--------------------------------|----------|-------------|---------|
| ITEM       | QTY | PART NO.   | PART DESCRIPTION               | LENGTH   | UNIT WT.    | NET WT. |
| 1          | 3   | 320751-I   | 5/16 CHAIN SHACKLE             |          | 0.76        | 2.29    |
| 2          | 6   | 320777 - I | 5/16" THIMBLE                  |          | 0.06        | 0.36    |
| 3          | 3   | X-LWRM     | RING MOUNT WELDMENT            |          | 68.81       | 206.42  |
| 4          | 9   | G58R-24    | 5/8" X 24" THREADED ROD (HDG.) |          | 2.22        | 19.95   |
| 4          | 9   | G58R-48    | 5/8" X 48" THREADED ROD (HDG.) |          | 4.43        | 39.89   |
| 5          | 18  | A58FW      | 5/8" HDG A325 FLATWASHER       |          | 0.03        | 0.61    |
| 6          | 30  | G58LW      | 5/8" HDG LOCKWASHER            |          | 0.03        | 0.78    |
| 7          | 30  | G58NUT     | 5/8" HDG HEAVY 2H HEX NUT      |          | 0.13        | 3.90    |
| 8          | 3   | X-TBW      | T-BRACKET WELDMENT             |          | 13.60       | 40.80   |
| 9          | 12  | G58234     | 5/8" UNC HEX BOLT (A325)       | 2 3/4 in | 0.36        | 4.27    |
| 10         | 3   | 320601-I   | 5/8" TURNBUCKLE                |          | 2.63        | 7.89    |
| 11         | 3   | 320103     | 3/8" EHS GUY STRAND            |          | 3.10        | 9.29    |
| 12         | 12  | 320152-I   | 5/16" CABLE CLAMP              |          | 1.32        | 15.78   |
|            |     |            |                                |          | TOTAL WT. # | 348.85  |



DETAIL B



DETAIL A

**TOLERANCE NOTES**

TOLERANCES ON DIMENSIONS, UNLESS OTHERWISE NOTED ARE:  
 SAWED, SHEARED AND GAS CUT EDGES ( $\pm 0.030"$ )  
 DRILLED AND GAS CUT HOLES ( $\pm 0.030"$ ) - NO CONING OF HOLES  
 LASER CUT EDGES AND HOLES ( $\pm 0.010"$ ) - NO CONING OF HOLES  
 BENDS ARE  $\pm 1/2$  DEGREE  
 ALL OTHER MACHINING ( $\pm 0.030"$ )  
 ALL OTHER ASSEMBLY ( $\pm 0.060"$ )

PROPRIETARY NOTE:  
 THE DATA AND TECHNIQUES CONTAINED IN THIS DRAWING ARE PROPRIETARY INFORMATION OF VALMONT INDUSTRIES AND CONSIDERED A TRADE SECRET. ANY USE OR DISCLOSURE WITHOUT THE CONSENT OF VALMONT INDUSTRIES IS STRICTLY PROHIBITED.

DESCRIPTION  
**CABLE REINFORCING KIT**

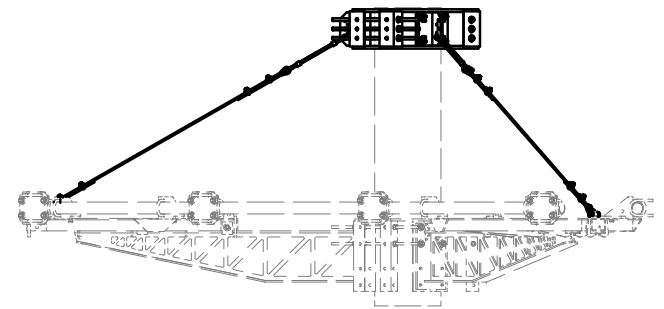
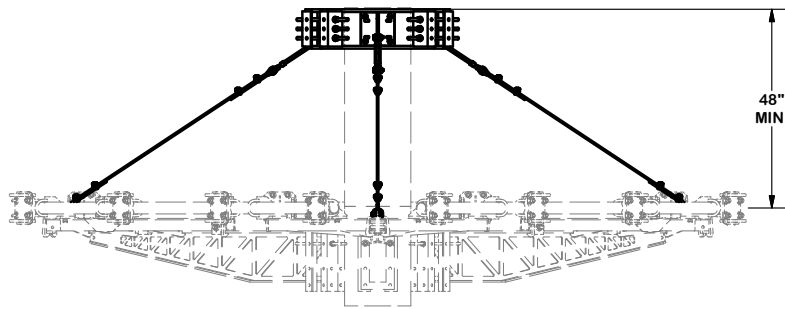
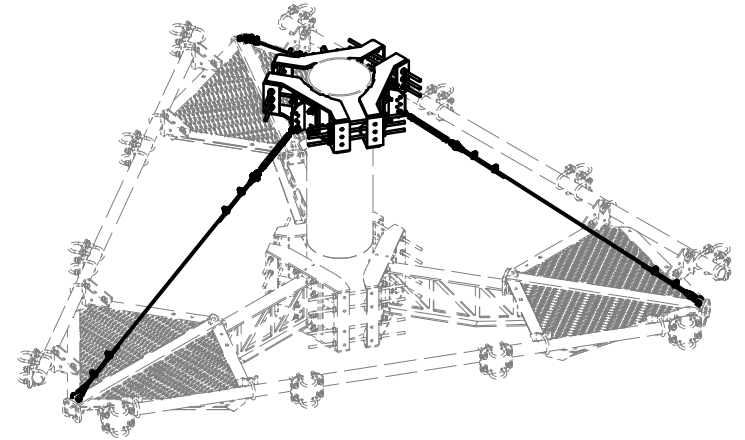
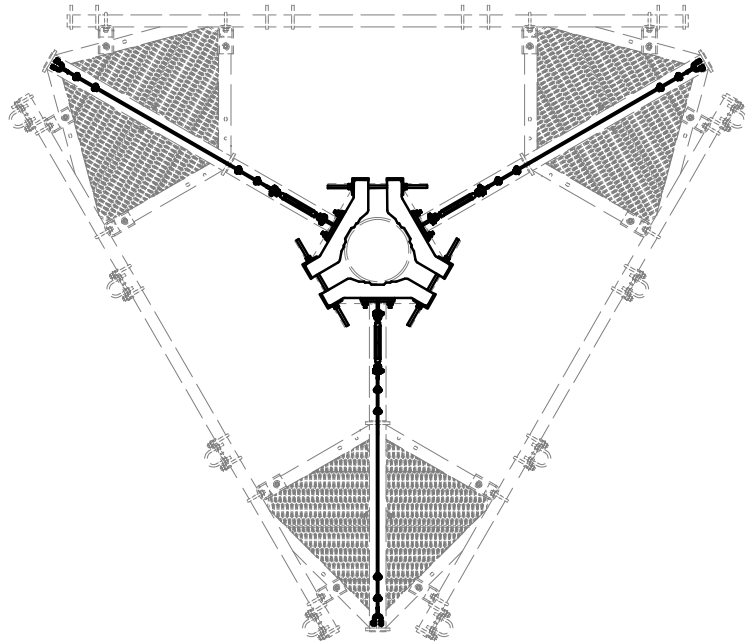
|         |                |               |
|---------|----------------|---------------|
| CPD NO. | DRAWN BY       | ENG. APPROVAL |
|         | CEK 10/26/2017 |               |
| CLASS   | DRAWING USAGE  | CHECKED BY    |
| 01      | SHOP           | BMC 11/2/2017 |

**SITE PRO 1**  
 Engineering Support Team:  
 1-888-753-7446

Locations:  
 New York, NY  
 Atlanta, GA  
 Los Angeles, CA  
 Plymouth, IN  
 Salem, OR  
 Dallas, TX

A valmont COMPANY

|          |         |        |
|----------|---------|--------|
| PART NO. | CRK-DC3 | PAGE   |
| DWG. NO. | CRK-DC3 | 1 OF 2 |



**TOLERANCE NOTES**

**TOLERANCES ON DIMENSIONS, UNLESS OTHERWISE NOTED ARE:  
 SAWED, SHEARED AND GAS CUT EDGES ( $\pm 0.030"$ )  
 DRILLED AND GAS CUT HOLES ( $\pm 0.030"$ ) - NO CONING OF HOLES  
 LASER CUT EDGES AND HOLES ( $\pm 0.010"$ ) - NO CONING OF HOLES  
 BENDS ARE  $\pm 1/2$  DEGREE  
 ALL OTHER MACHINING ( $\pm 0.030"$ )  
 ALL OTHER ASSEMBLY ( $\pm 0.060"$ )**

**PROPRIETARY NOTE:  
 THE DATA AND TECHNIQUES CONTAINED IN THIS DRAWING ARE PROPRIETARY INFORMATION OF VALMONT  
 INDUSTRIES AND CONSIDERED A TRADE SECRET. ANY USE OR DISCLOSURE WITHOUT THE CONSENT OF  
 VALMONT INDUSTRIES IS STRICTLY PROHIBITED.**

DESCRIPTION  
**CABLE  
 REINFORCING  
 KIT**

|         |               |               |
|---------|---------------|---------------|
| CPD NO. | DRAWN BY      | ENG. APPROVAL |
| CLASS   | DRAWING USAGE | CHECKED BY    |
| 01      | 01            | SHOP          |
|         |               | BMC 11/2/2017 |

**SITE PRO 1**  
 Engineering Support Team:  
 1-888-753-7446  
 Locations:  
 New York, NY  
 Atlanta, GA  
 Los Angeles, CA  
 Plymouth, IN  
 Salem, OR  
 Dallas, TX

|          |                |
|----------|----------------|
| PART NO. | <b>CRK-DC3</b> |
| DWG. NO. | <b>CRK-DC3</b> |