

| PARTS LIST |     |               |  |         |             |         |
|------------|-----|---------------|--|---------|-------------|---------|
| ITEM       | QTY | PART NO.      | PART DESCRIPTION                       | LENGTH  | UNIT WT.    | NET WT. |
| 1          | 3   | X-251012      | BALLAST TRAY WELDMENT - SITE PRO 1     |         | 36.58       | 109.74  |
| 2          | 3   | X-232696      | BALLAST TRAY WELDMENT - SITE PRO 1     |         | 66.49       | 199.46  |
| 3          | 24  | X-CSRT-GP30   | 3" GUSSET PLATE                        | 12 in   | 4.04        | 97.05   |
| 4          | 18  | X-CSRT-PCB    | PIPE CONNECTION BRACKET                | 12 in   | 3.01        | 54.12   |
| 5          | 19  | X-CSRT-TW     | 3-1/2" T-WELDMENT                      |         | 4.93        | 93.61   |
| 6          | 2   | X-CSRT-3024FW | CSRT FLANGE PIPE WELDMENT 2-7/8" x 24" |         | 15.31       | 30.62   |
| 7          | 5   | X-CSRT-3048FW | CSRT FLANGE PIPE WELDMENT 2-7/8" x 48" |         | 28.34       | 141.72  |
| 8          | 7   | X-CSRT-3072FW | CSRT FLANGE PIPE WELDMENT 2-7/8" x 72" |         | 41.38       | 289.65  |
| 9          | 16  | X-CSRT-3096FW | CSRT FLANGE PIPE WELDMENT 2-7/8" x 96" |         | 54.41       | 870.62  |
| 10         | 4   | X-CSRT-P3072  | 2-7/8" DIA. PIPE X 72" LONG            | 72 in   | 36.81       | 147.23  |
| 11         | 72  | X-UB1300      | 1/2" X 3" X 5" X 2" U-BOLT (HDG.)      |         | 0.70        | 50.17   |
| 12         | 98  | G1205         | 1/2" x 5" HDG HEX BOLT GR5 FULL THREAD | 5 in    | 0.33        | 31.93   |
| 13         | 6   | G1203         | 1/2" x 3" HDG HEX BOLT GR5 FULL THREAD | 3 in    | 0.22        | 1.30    |
| 14         | 56  | G1202         | 1/2" x 2" HDG HEX BOLT GR5             | 2 in    | 0.18        | 9.84    |
| 15         | 232 | G12FW         | 1/2" HDG USS FLATWASHER                | 3/32 in | 0.03        | 7.91    |
| 16         | 304 | G12LW         | 1/2" HDG LOCKWASHER                    | 1/8 in  | 0.01        | 4.23    |
| 17         | 310 | G12NUT        | 1/2" HDG HEAVY 2H HEX NUT              |         | 0.07        | 22.20   |
|            |     |               |  |         | TOTAL WT. # | 2160.44 |

TOLERANCE NOTES

TOLERANCES ON DIMENSIONS, UNLESS OTHERWISE NOTED ARE:  
SAWED, SHEARED AND GAS CUT EDGES (± 0.030")  
DRILLED AND GAS CUT HOLES (± 0.030") - NO CONING OF HOLES  
LASER CUT EDGES AND HOLES (± 0.010") - NO CONING OF HOLES  
BENDS ARE ± 1/2 DEGREE  
ALL OTHER MACHINING (± 0.030")  
ALL OTHER ASSEMBLY (± 0.060")

PROPRIETARY NOTE:  
THE DATA AND TECHNIQUES CONTAINED IN THIS DRAWING ARE PROPRIETARY INFORMATION OF VALMONT INDUSTRIES AND CONSIDERED A TRADE SECRET. ANY USE OR DISCLOSURE WITHOUT THE CONSENT OF VALMONT INDUSTRIES IS STRICTLY PROHIBITED.

DESCRIPTION  
CONSTRUCTOR-SET ROOF TOP -  
2 SIDED NON-PENETRATING, 12' FACE, 4 MASTS

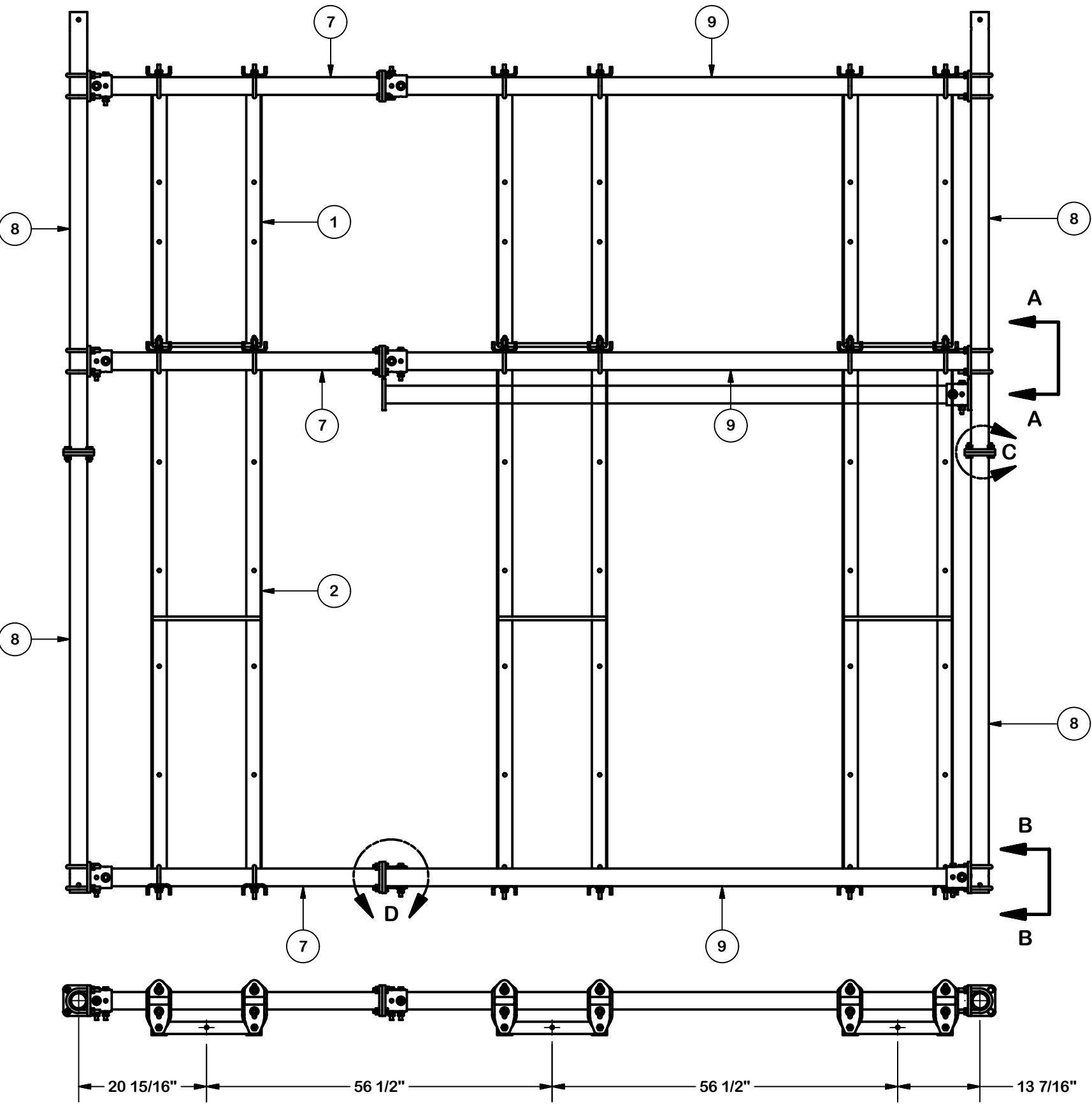
|             |           |                           |  |               |  |
|-------------|-----------|---------------------------|--|---------------|--|
| CPD NO.     |           | DRAWN BY<br>JFS 7/20/2021 |  | ENG. APPROVAL |  |
| CLASS<br>01 | SUB<br>01 | DRAWING USAGE<br>SHOP     |  | CHECKED BY    |  |



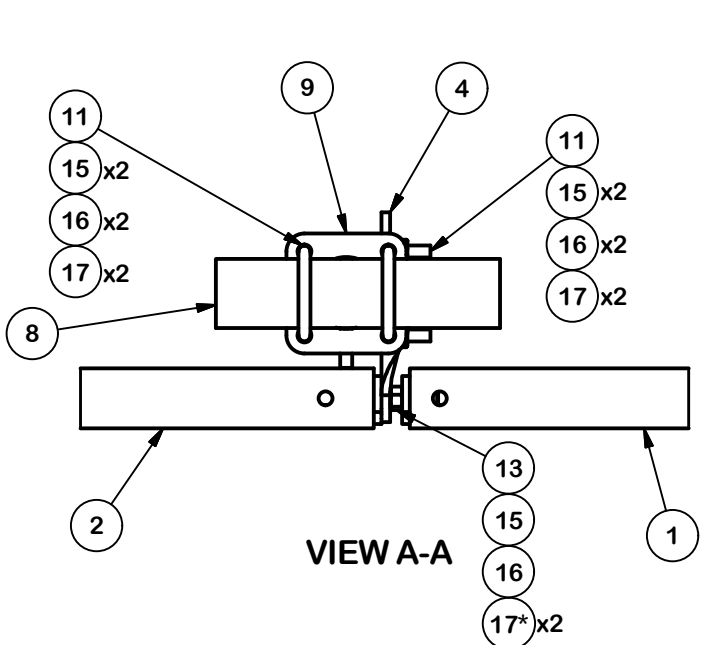
Locations:  
New York, NY  
Atlanta, GA  
Los Angeles, CA  
Plymouth, IN  
Salem, OR  
Dallas, TX

Engineering  
Support Team:  
1-888-753-7446

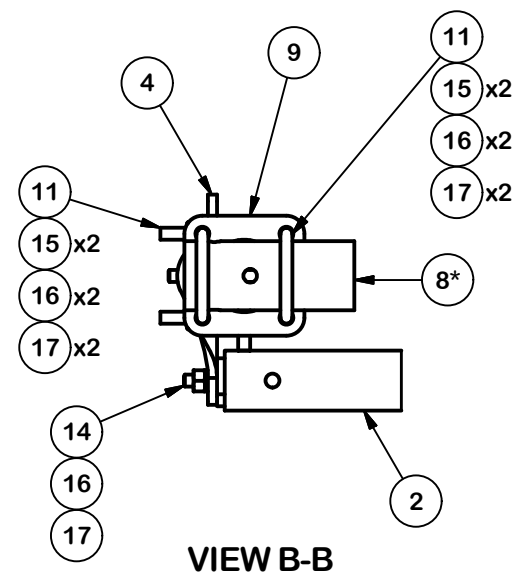
|                           |                |
|---------------------------|----------------|
| PART NO.<br>CSRT-24-81212 | 1 OF 4<br>PAGE |
| DWG. NO.<br>CSRT-24-81212 |                |



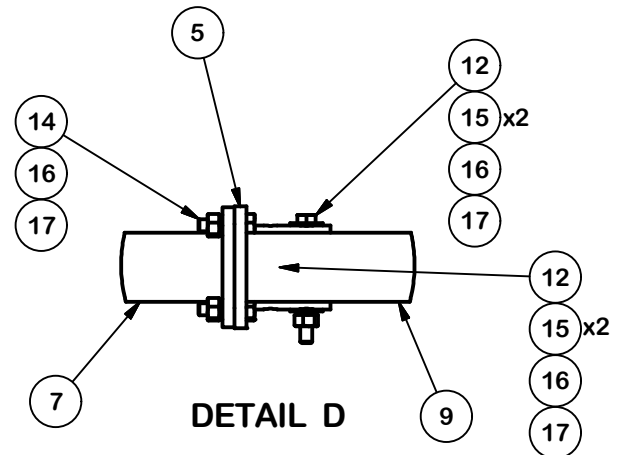
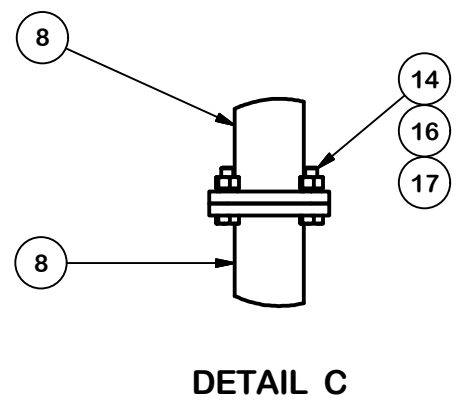
BUILDING THE BASE



\*NOTE: USE (1) NUT BETWEEN TRAYS



\*NOTE: PIPE IS TO BE FLUSH WITH EDGE OF PLATE



TOLERANCE NOTES

TOLERANCES ON DIMENSIONS, UNLESS OTHERWISE NOTED ARE:  
SAWED, SHEARED AND GAS CUT EDGES ( $\pm 0.030''$ )  
DRILLED AND GAS CUT HOLES ( $\pm 0.030''$ ) - NO CONING OF HOLES  
LASER CUT EDGES AND HOLES ( $\pm 0.010''$ ) - NO CONING OF HOLES  
BENDS ARE  $\pm 1/2$  DEGREE  
ALL OTHER MACHINING ( $\pm 0.030''$ )  
ALL OTHER ASSEMBLY ( $\pm 0.060''$ )

PROPRIETARY NOTE:  
THE DATA AND TECHNIQUES CONTAINED IN THIS DRAWING ARE PROPRIETARY INFORMATION OF VALMONT INDUSTRIES AND CONSIDERED A TRADE SECRET. ANY USE OR DISCLOSURE WITHOUT THE CONSENT OF VALMONT INDUSTRIES IS STRICTLY PROHIBITED.

DESCRIPTION  
CONSTRUCTOR-SET ROOF TOP -  
2 SIDED NON-PENETRATING, 12' FACE, 4 MASTS

|             |           |                           |  |               |  |
|-------------|-----------|---------------------------|--|---------------|--|
| CPD NO.     |           | DRAWN BY<br>JFS 7/20/2021 |  | ENG. APPROVAL |  |
| CLASS<br>01 | SUB<br>01 | DRAWING USAGE<br>SHOP     |  | CHECKED BY    |  |



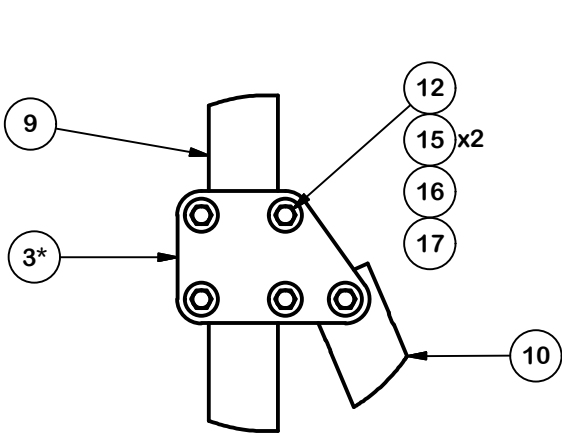
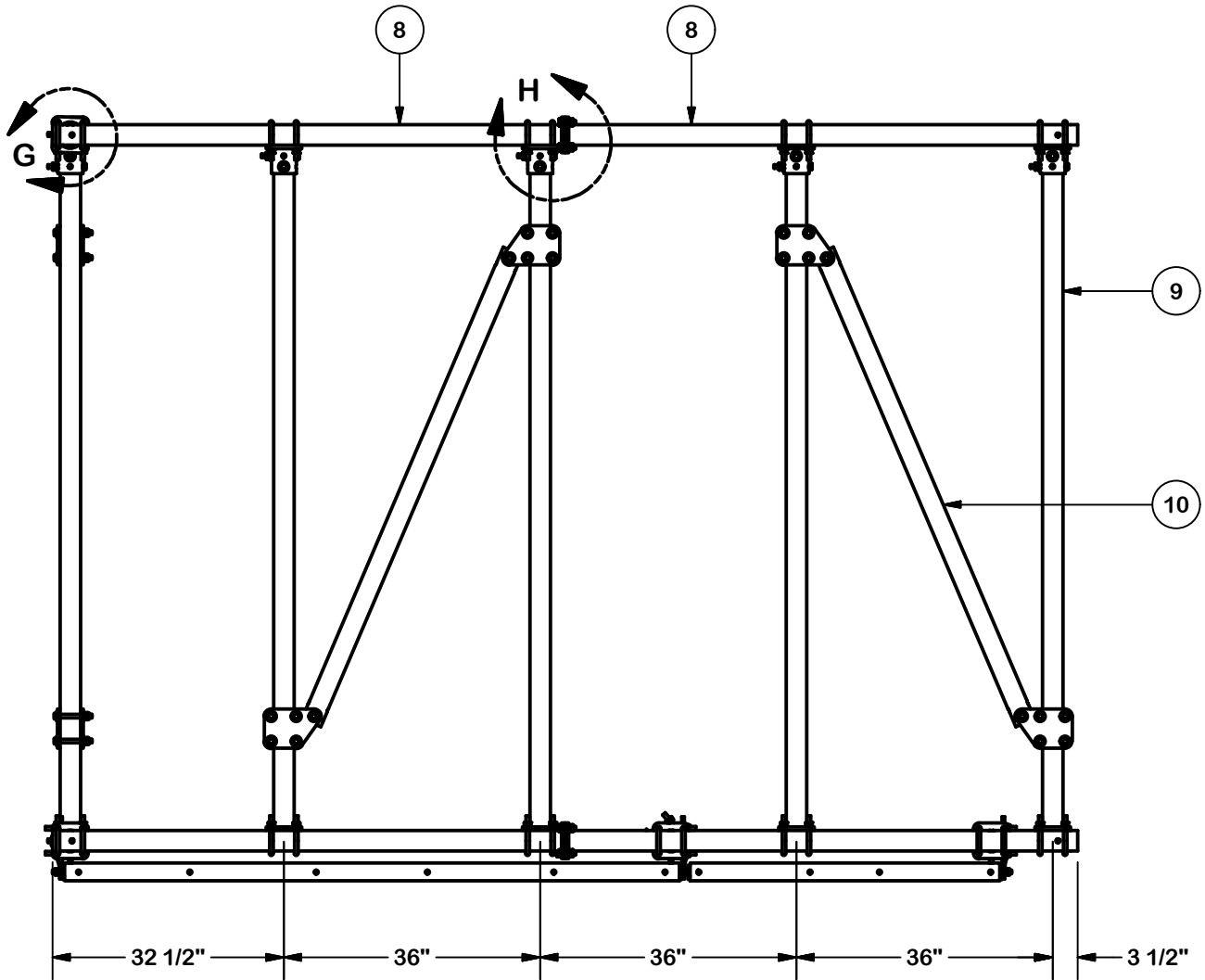
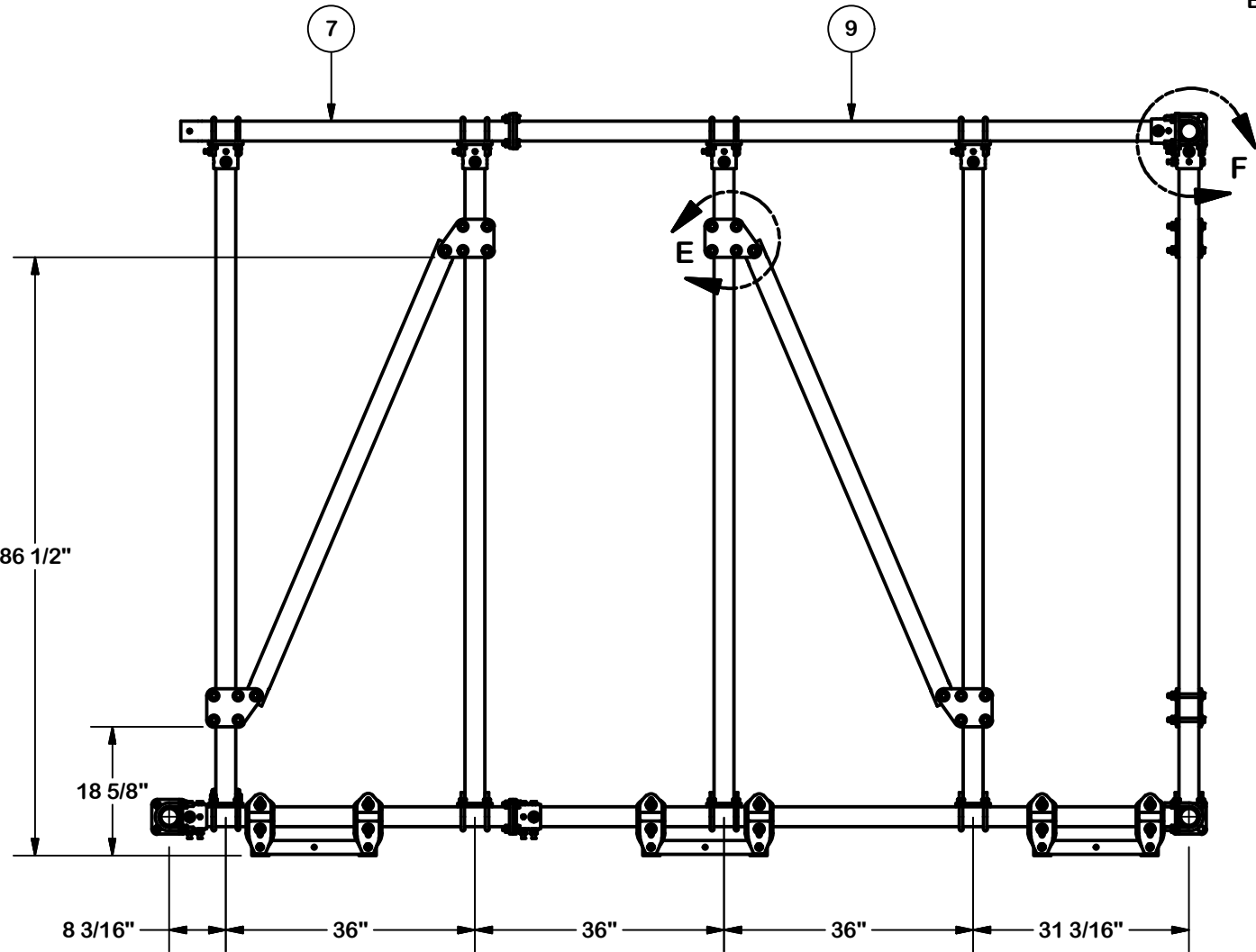
A valmont COMPANY

Locations:  
New York, NY  
Atlanta, GA  
Los Angeles, CA  
Plymouth, IN  
Salem, OR  
Dallas, TX

Engineering  
Support Team:  
1-888-753-7446

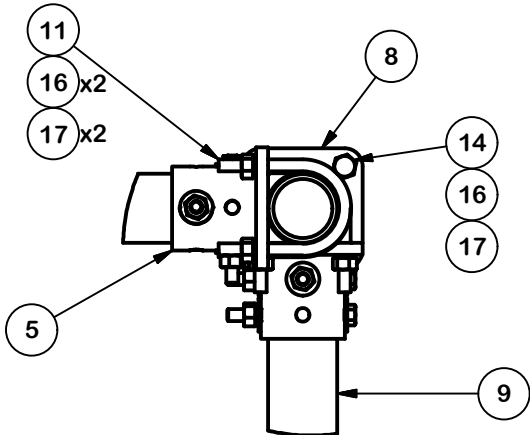
|               |  |                |
|---------------|--|----------------|
| PART NO.      |  | 2 OF 4<br>PAGE |
| CSRT-24-81212 |  |                |
| DWG. NO.      |  |                |
| CSRT-24-81212 |  |                |

BUILDING THE SIDES

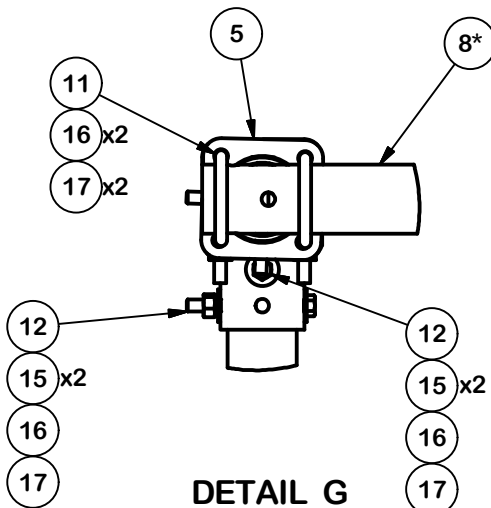


DETAIL E

\*NOTE: PLATES ON EACH SIDE OF PIPE

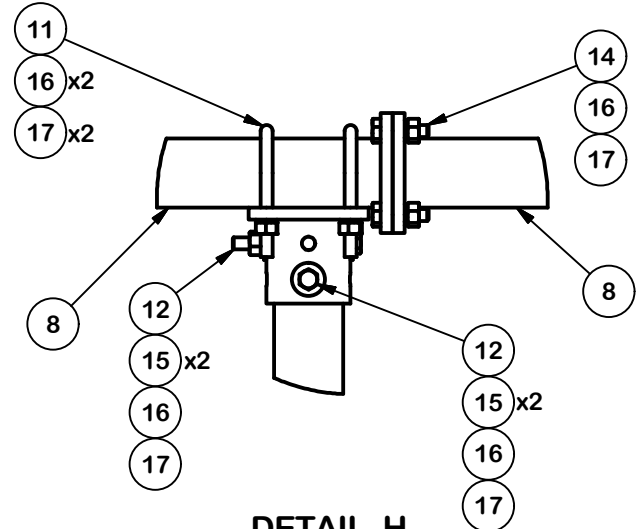


DETAIL F



DETAIL G

\*NOTE: PIPE IS TO BE FLUSH WITH EDGE OF PLATE



DETAIL H

TOLERANCE NOTES

TOLERANCES ON DIMENSIONS, UNLESS OTHERWISE NOTED ARE:  
SAWED, SHEARED AND GAS CUT EDGES ( $\pm 0.030"$ )  
DRILLED AND GAS CUT HOLES ( $\pm 0.030"$ ) - NO CONING OF HOLES  
LASER CUT EDGES AND HOLES ( $\pm 0.010"$ ) - NO CONING OF HOLES  
BENDS ARE  $\pm 1/2$  DEGREE  
ALL OTHER MACHINING ( $\pm 0.030"$ )  
ALL OTHER ASSEMBLY ( $\pm 0.060"$ )

PROPRIETARY NOTE:  
THE DATA AND TECHNIQUES CONTAINED IN THIS DRAWING ARE PROPRIETARY INFORMATION OF VALMONT INDUSTRIES AND CONSIDERED A TRADE SECRET. ANY USE OR DISCLOSURE WITHOUT THE CONSENT OF VALMONT INDUSTRIES IS STRICTLY PROHIBITED.

DESCRIPTION

CONSTRUCTOR-SET ROOF TOP -  
2 SIDED NON-PENETRATING, 12' FACE, 4 MASTS

|             |           |                           |  |               |  |
|-------------|-----------|---------------------------|--|---------------|--|
| CPD NO.     |           | DRAWN BY<br>JFS 7/20/2021 |  | ENG. APPROVAL |  |
| CLASS<br>01 | SUB<br>01 | DRAWING USAGE<br>SHOP     |  | CHECKED BY    |  |

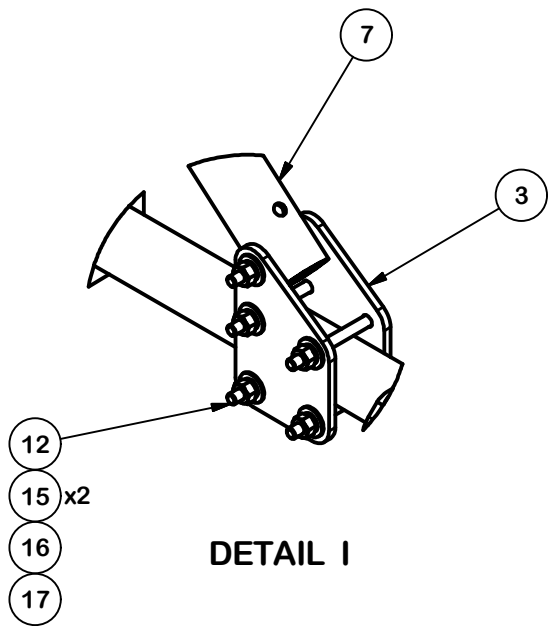
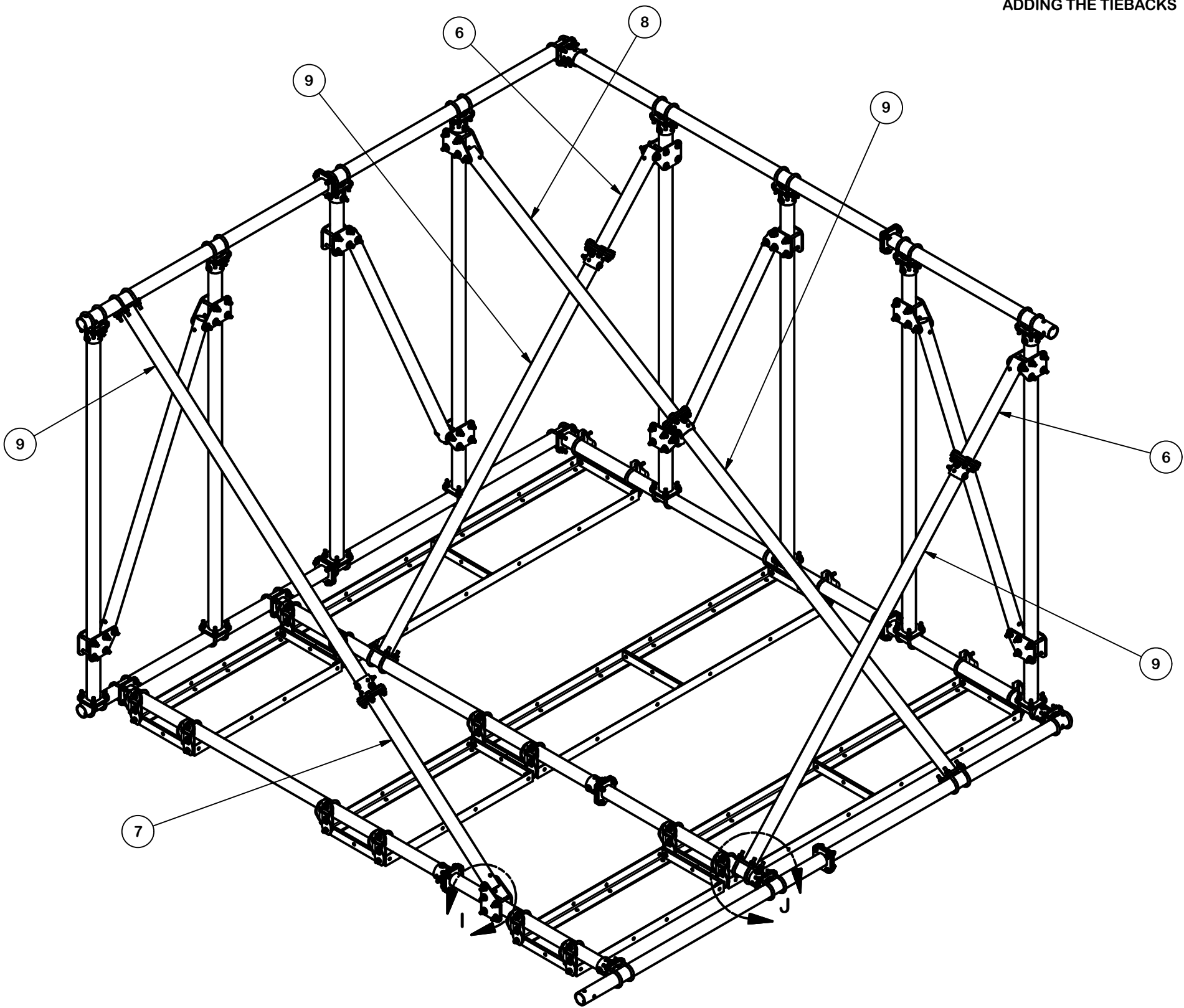


Locations:  
New York, NY  
Atlanta, GA  
Los Angeles, CA  
Plymouth, IN  
Salem, OR  
Dallas, TX

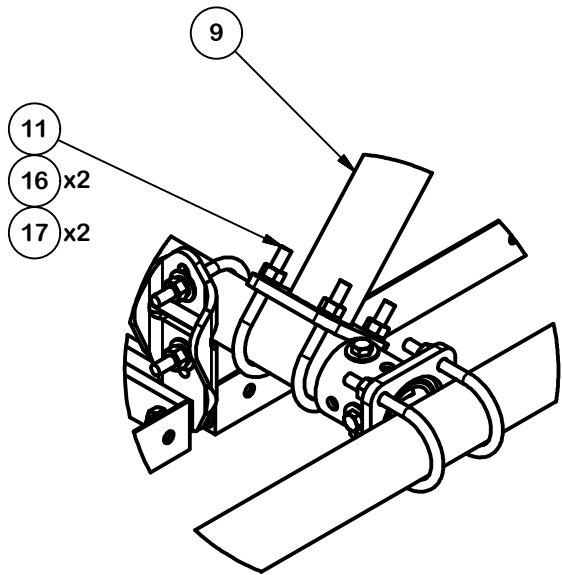
Engineering  
Support Team:  
1-888-753-7446

|          |               |
|----------|---------------|
| PART NO. | CSRT-24-81212 |
| DWG. NO. | CSRT-24-81212 |

ADDING THE TIEBACKS



DETAIL I



DETAIL J

TOLERANCE NOTES

TOLERANCES ON DIMENSIONS, UNLESS OTHERWISE NOTED ARE:  
SAWED, SHEARED AND GAS CUT EDGES ( $\pm 0.030''$ )  
DRILLED AND GAS CUT HOLES ( $\pm 0.030''$ ) - NO CONING OF HOLES  
LASER CUT EDGES AND HOLES ( $\pm 0.010''$ ) - NO CONING OF HOLES  
BENDS ARE  $\pm 1/2$  DEGREE  
ALL OTHER MACHINING ( $\pm 0.030''$ )  
ALL OTHER ASSEMBLY ( $\pm 0.060''$ )

PROPRIETARY NOTE:  
THE DATA AND TECHNIQUES CONTAINED IN THIS DRAWING ARE PROPRIETARY INFORMATION OF VALMONT INDUSTRIES AND CONSIDERED A TRADE SECRET. ANY USE OR DISCLOSURE WITHOUT THE CONSENT OF VALMONT INDUSTRIES IS STRICTLY PROHIBITED.

DESCRIPTION  
CONSTRUCTOR-SET ROOF TOP -  
2 SIDED NON-PENETRATING, 12' FACE, 4 MASTS

|             |           |                           |  |               |  |
|-------------|-----------|---------------------------|--|---------------|--|
| CPD NO.     |           | DRAWN BY<br>JFS 7/20/2021 |  | ENG. APPROVAL |  |
| CLASS<br>01 | SUB<br>01 | DRAWING USAGE<br>SHOP     |  | CHECKED BY    |  |



A valmont COMPANY

Locations:  
New York, NY  
Atlanta, GA  
Los Angeles, CA  
Plymouth, IN  
Salem, OR  
Dallas, TX

Engineering  
Support Team:  
1-888-753-7446

|                           |                |
|---------------------------|----------------|
| PART NO.<br>CSRT-24-81212 | PAGE<br>4 OF 4 |
| DWG. NO.<br>CSRT-24-81212 |                |