

PARTS LIST						
ITEM	QTY	PART NO.	PART DESCRIPTION	LENGTH	UNIT WT.	NET WT.
1	3	X-251012	BALLAST TRAY WELDMENT - SITE PRO 1		36.58	109.74
2	3	X-232696	BALLAST TRAY WELDMENT - SITE PRO 1		66.49	199.46
3	36	X-CSRT-GP30	3" GUSSET PLATE	12 in	4.04	145.57
4	18	X-CSRT-PCB	PIPE CONNECTION BRACKET	12 in	3.01	54.12
5	26	X-CSRT-TW	3-1/2" T-WELDMENT		4.93	128.10
6	4	X-CSRT-3024FW	CSRT FLANGE PIPE WELDMENT 2-7/8" x 24"		15.31	61.24
7	18	X-CSRT-3072FW	CSRT FLANGE PIPE WELDMENT 2-7/8" x 72"		41.38	744.82
8	14	X-CSRT-3096FW	CSRT FLANGE PIPE WELDMENT 2-7/8" x 96"		54.41	761.79
9	8	X-CSRT-P3072	2-7/8" DIA. PIPE X 72" LONG	72 in	36.81	294.46
10	90	X-UB1300	1/2" X 3" X 5" X 2" U-BOLT (HDG.)		0.70	62.71
11	142	G1205	1/2" x 5" HDG HEX BOLT GR5 FULL THREAD	5 in	0.33	46.27
12	6	G1203	1/2" x 3" HDG HEX BOLT GR5 FULL THREAD	3 in	0.22	1.30
13	64	G1202	1/2" x 2" HDG HEX BOLT GR5	2 in	0.18	11.24
14	320	G12FW	1/2" HDG USS FLATWASHER	3/32 in	0.03	10.91
15	392	G12LW	1/2" HDG LOCKWASHER	1/8 in	0.01	5.45
16	398	G12NUT	1/2" HDG HEAVY 2H HEX NUT		0.07	28.51
					TOTAL WT. #	2666.20

TOLERANCE NOTES

TOLERANCES ON DIMENSIONS, UNLESS OTHERWISE NOTED ARE:
SAWED, SHEARED AND GAS CUT EDGES (± 0.030")
DRILLED AND GAS CUT HOLES (± 0.030") - NO CONING OF HOLES
LASER CUT EDGES AND HOLES (± 0.010") - NO CONING OF HOLES
BENDS ARE ± 1/2 DEGREE
ALL OTHER MACHINING (± 0.030")
ALL OTHER ASSEMBLY (± 0.060")

PROPRIETARY NOTE:
THE DATA AND TECHNIQUES CONTAINED IN THIS DRAWING ARE PROPRIETARY INFORMATION OF VALMONT INDUSTRIES AND CONSIDERED A TRADE SECRET. ANY USE OR DISCLOSURE WITHOUT THE CONSENT OF VALMONT INDUSTRIES IS STRICTLY PROHIBITED.

DESCRIPTION
CONSTRUCTOR-SET ROOF TOP -
3 SIDED NON-PENETRATING, 12' FACE, 4 MASTS

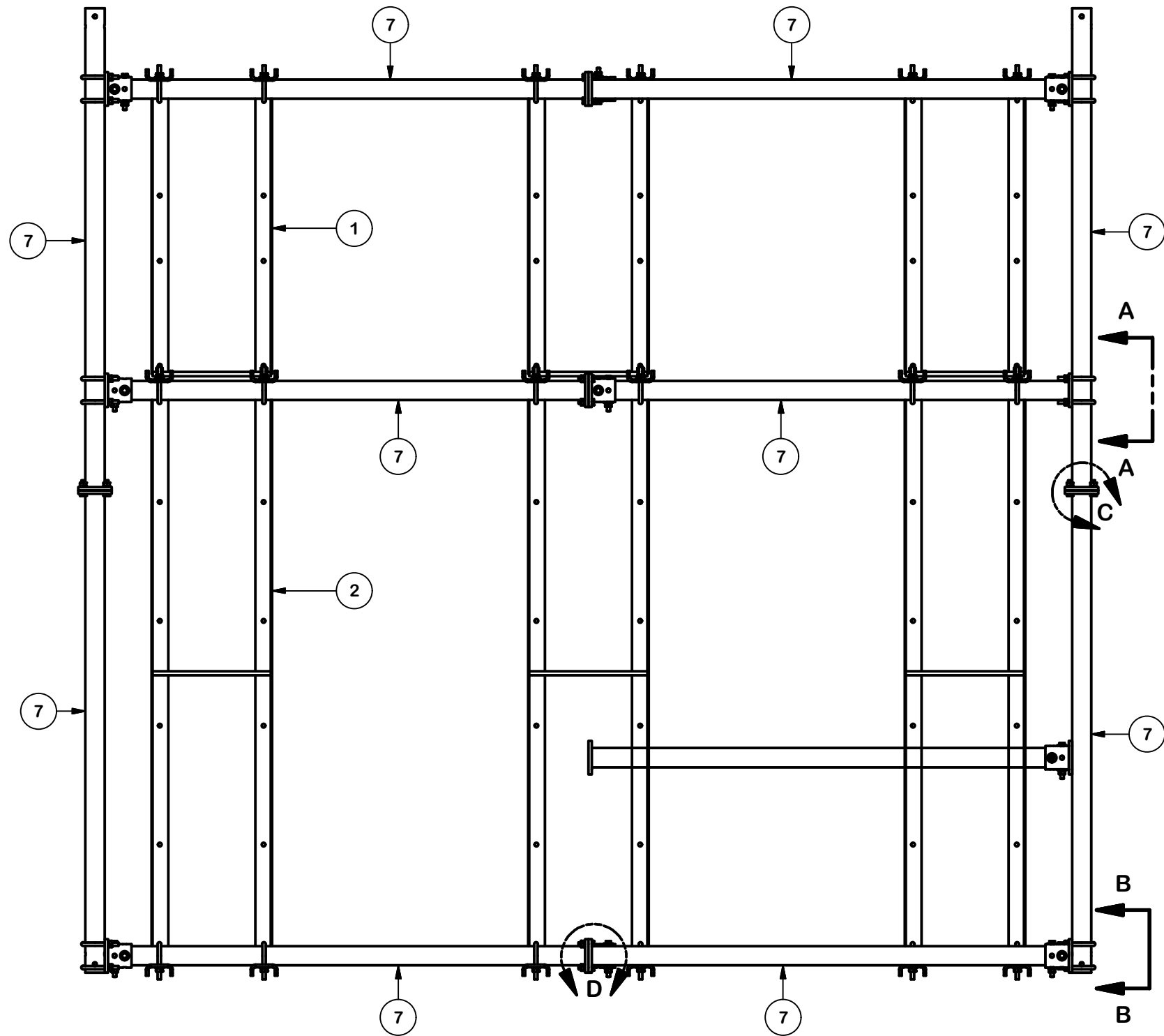
CPD NO.		DRAWN BY JFS 7/20/2021		ENG. APPROVAL	
CLASS 01	SUB 01	DRAWING USAGE CUSTOMER		CHECKED BY	



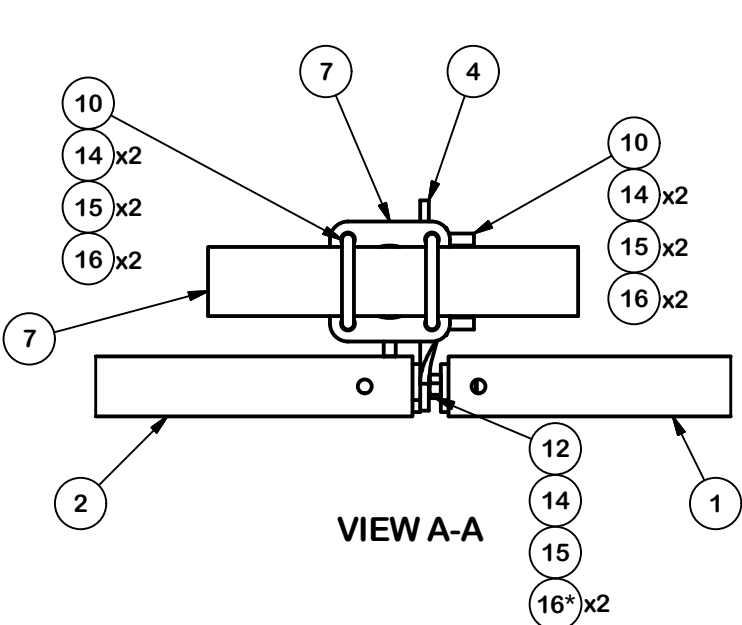
Locations:
New York, NY
Atlanta, GA
Los Angeles, CA
Plymouth, IN
Salem, OR
Dallas, TX

Engineering
Support Team:
1-888-753-7446

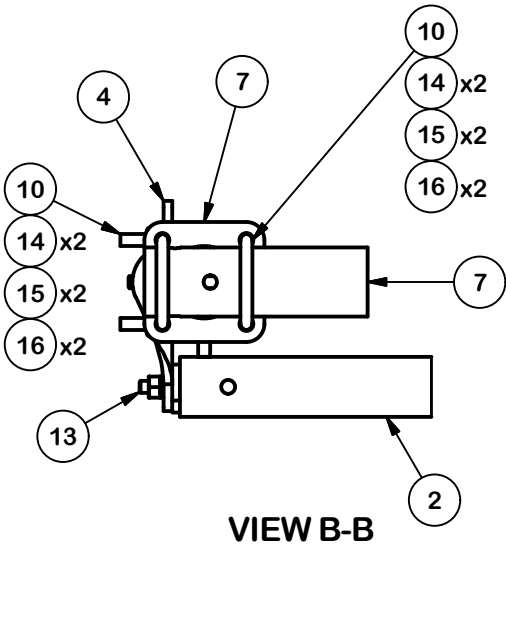
PART NO.	CSRT-34-81212
DWG. NO.	CSRT-34-81212



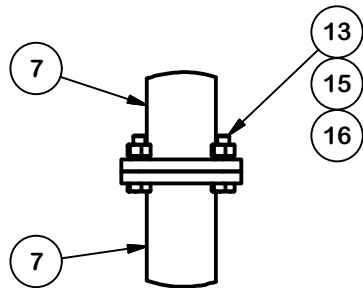
BUILDING THE BASE



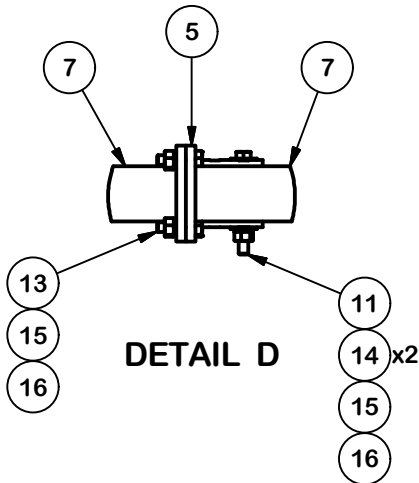
*NOTE: USE (1) NUT BETWEEN TRAYS



*NOTE: PIPE IS TO BE FLUSH WITH EDGE OF PLATE



DETAIL C



DETAIL D

TOLERANCE NOTES

TOLERANCES ON DIMENSIONS, UNLESS OTHERWISE NOTED ARE:
SAWED, SHEARED AND GAS CUT EDGES ($\pm 0.030''$)
DRILLED AND GAS CUT HOLES ($\pm 0.030''$) - NO CONING OF HOLES
LASER CUT EDGES AND HOLES ($\pm 0.010''$) - NO CONING OF HOLES
BENDS ARE $\pm 1/2$ DEGREE
ALL OTHER MACHINING ($\pm 0.030''$)
ALL OTHER ASSEMBLY ($\pm 0.060''$)

PROPRIETARY NOTE:
THE DATA AND TECHNIQUES CONTAINED IN THIS DRAWING ARE PROPRIETARY INFORMATION OF VALMONT INDUSTRIES AND CONSIDERED A TRADE SECRET. ALL USE OR REPRODUCTION WITHOUT THE CONSENT OF VALMONT INDUSTRIES IS STRICTLY PROHIBITED.

DESCRIPTION
CONSTRUCTOR-SET ROOF TOP -
3 SIDED NON-PENETRATING, 12' FACE, 4 MASTS

CPD NO.		DRAWN BY JFS 7/20/2021		ENG. APPROVAL	
CLASS 01	SUB 01	DRAWING USAGE CUSTOMER		CHECKED BY	

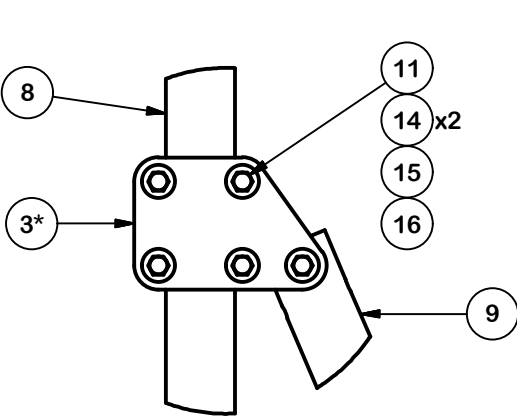
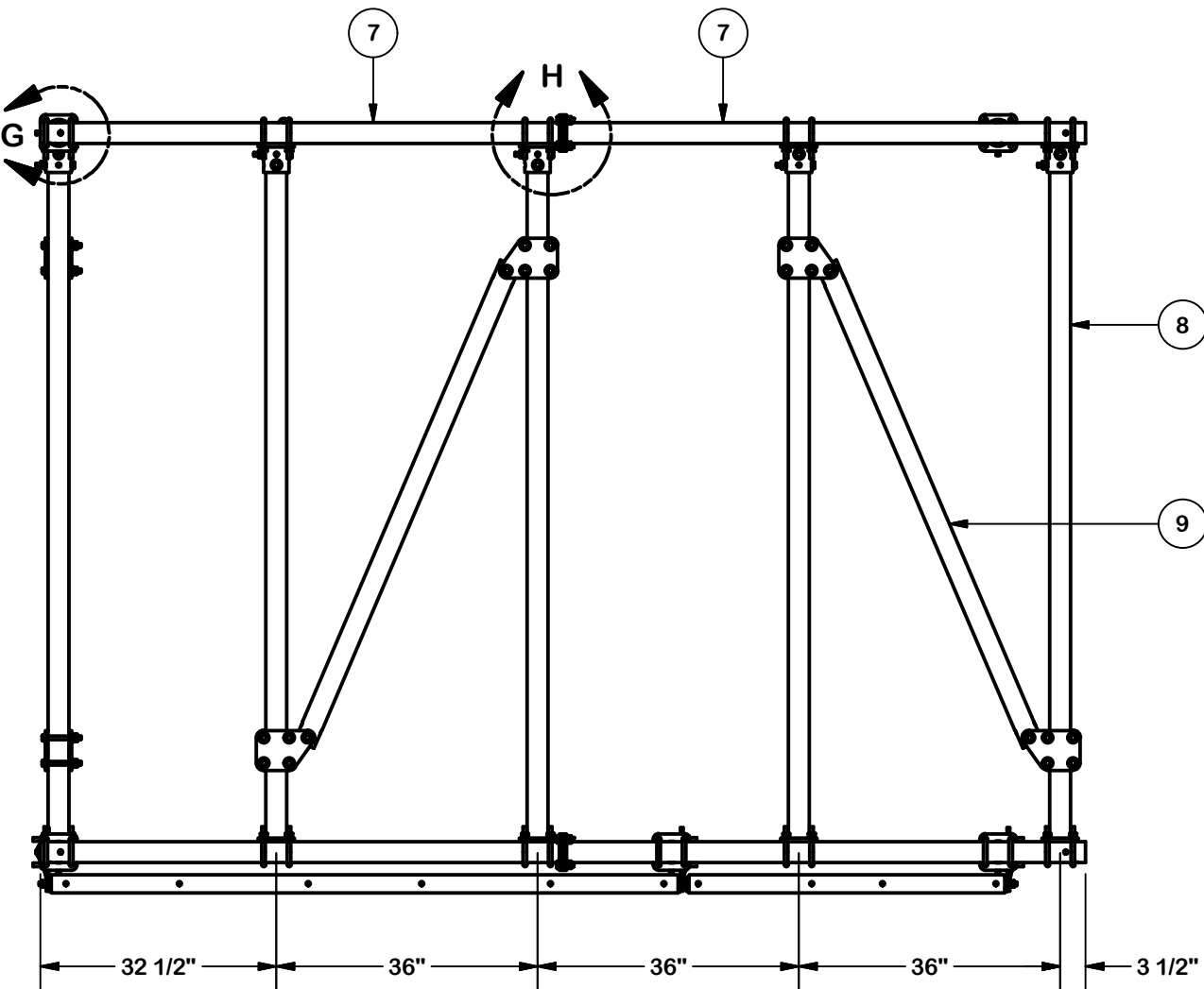
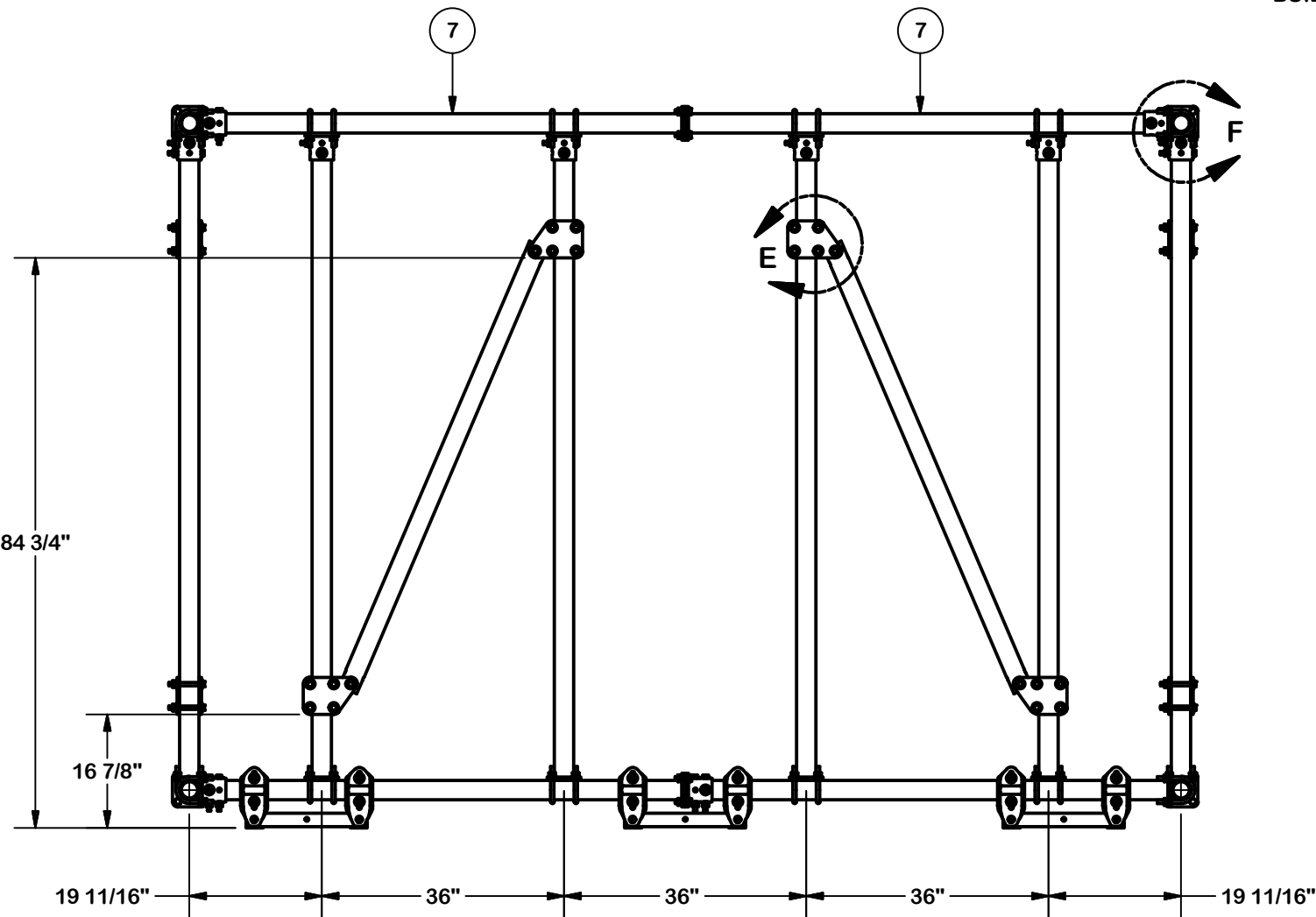


Locations:
New York, NY
Atlanta, GA
Los Angeles, CA
Plymouth, IN
Salem, OR
Dallas, TX

Engineering
Support Team:
1-888-753-7446

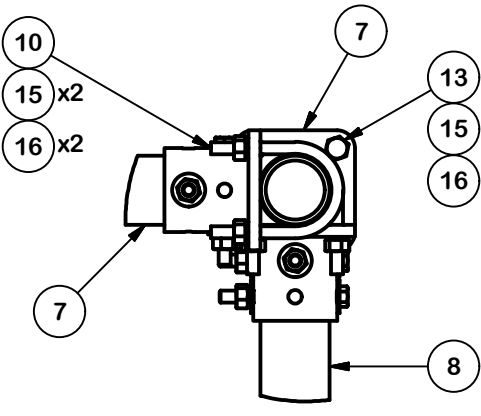
PART NO.	CSRT-34-81212
DWG. NO.	CSRT-34-81212

BUILDING THE SIDES

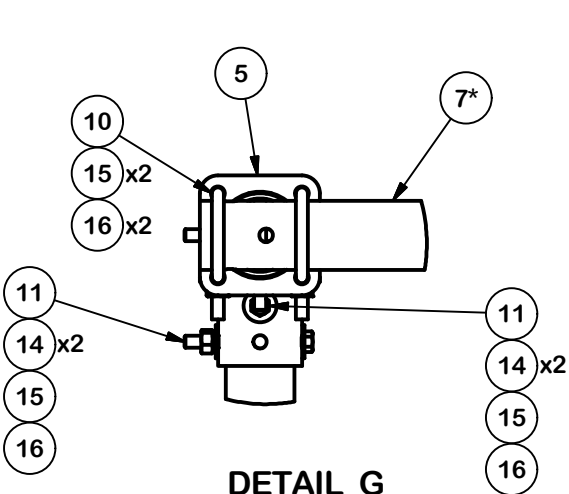


DETAIL E

*NOTE: PLATES ON EACH SIDE OF PIPE

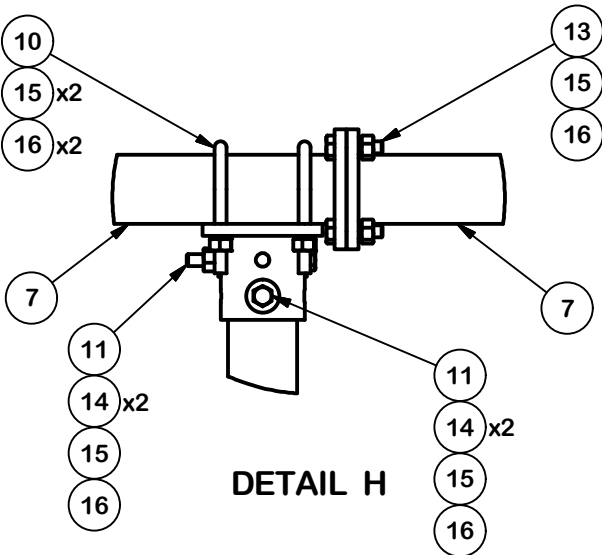


DETAIL F



DETAIL G

*NOTE: PIPE IS TO BE FLUSH WITH EDGE OF PLATE



DETAIL H

TOLERANCE NOTES

TOLERANCES ON DIMENSIONS, UNLESS OTHERWISE NOTED ARE:
SAWED, SHEARED AND GAS CUT EDGES ($\pm 0.030"$)
DRILLED AND GAS CUT HOLES ($\pm 0.030"$) - NO CONING OF HOLES
LASER CUT EDGES AND HOLES ($\pm 0.010"$) - NO CONING OF HOLES
BENDS ARE $\pm 1/2$ DEGREE
ALL OTHER MACHINING ($\pm 0.030"$)
ALL OTHER ASSEMBLY ($\pm 0.060"$)

PROPRIETARY NOTE:
THE DATA AND TECHNIQUES CONTAINED IN THIS DRAWING ARE PROPRIETARY INFORMATION OF VALMONT INDUSTRIES AND CONSIDERED A TRADE SECRET. ANY USE OR DISCLOSURE WITHOUT THE CONSENT OF VALMONT INDUSTRIES IS STRICTLY PROHIBITED.

DESCRIPTION

CONSTRUCTOR-SET ROOF TOP -
3 SIDED NON-PENETRATING, 12' FACE, 4 MASTS

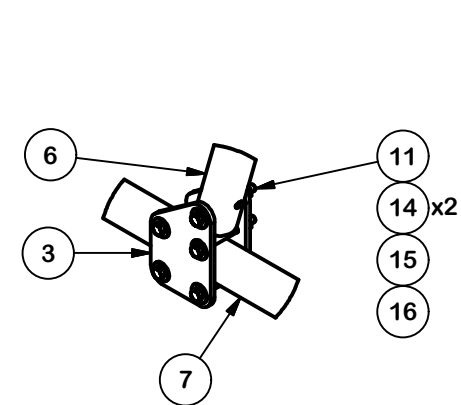
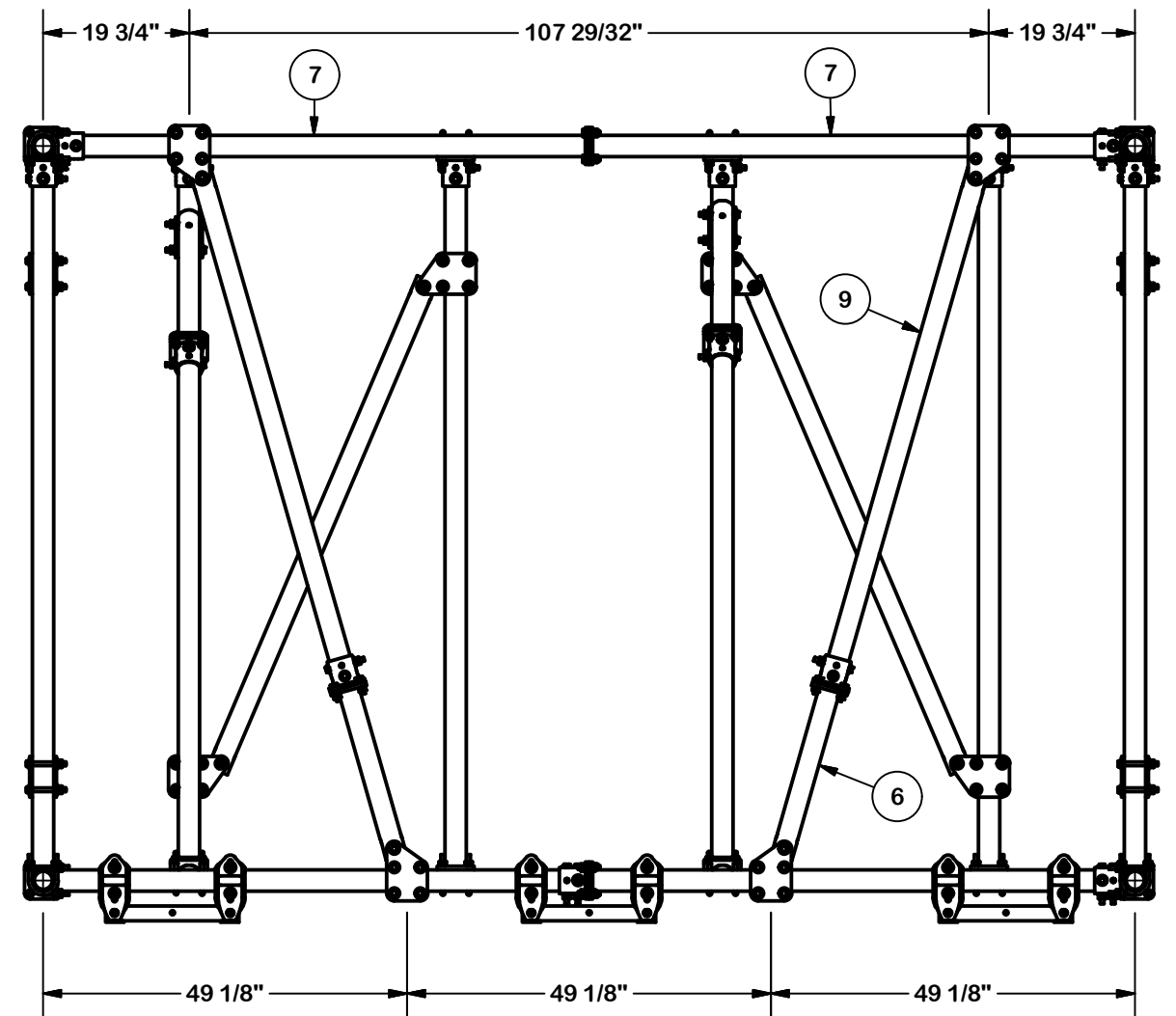
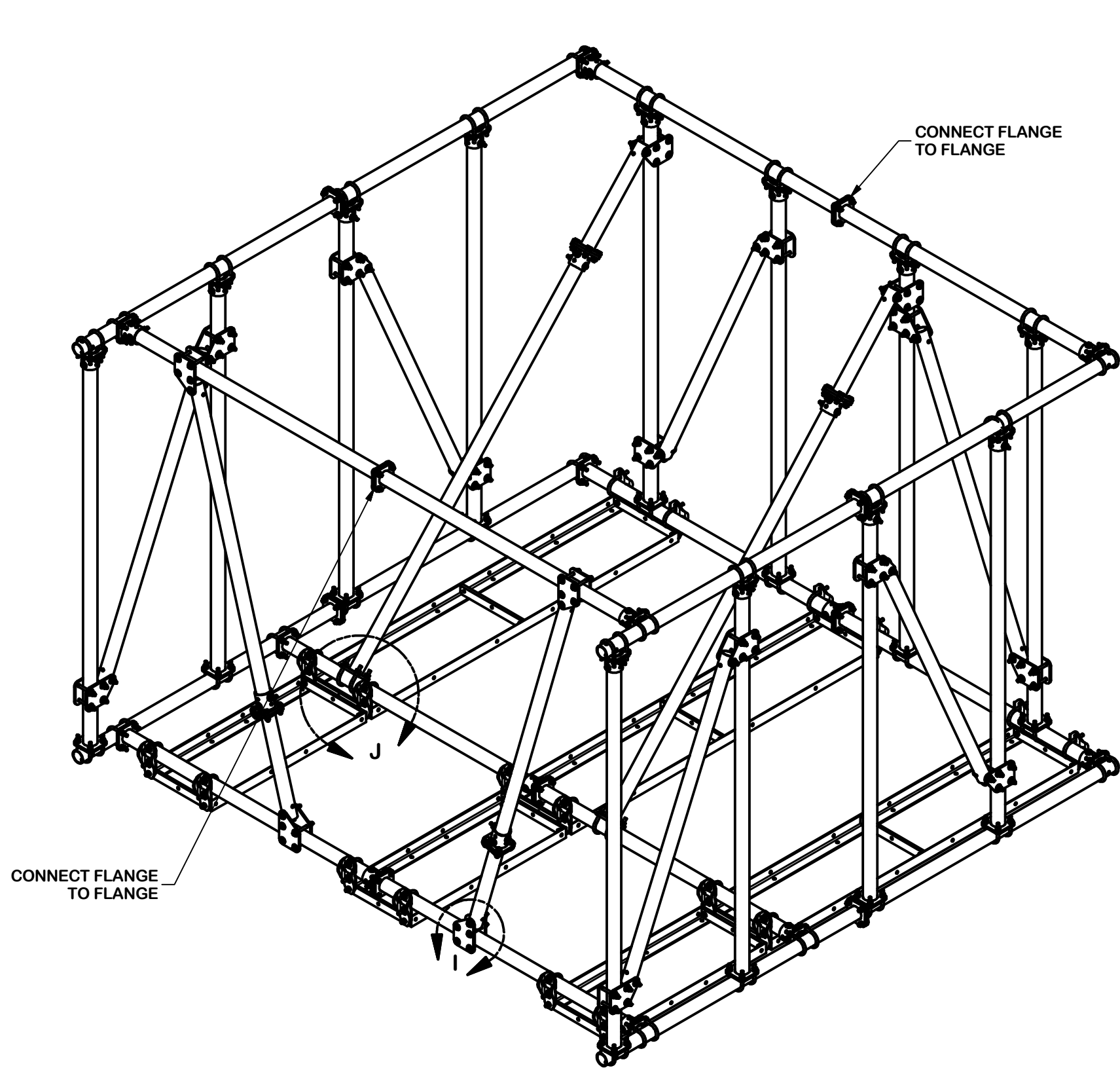
CPD NO.		DRAWN BY JFS 7/20/2021		ENG. APPROVAL	
CLASS 01	SUB 01	DRAWING USAGE CUSTOMER		CHECKED BY	



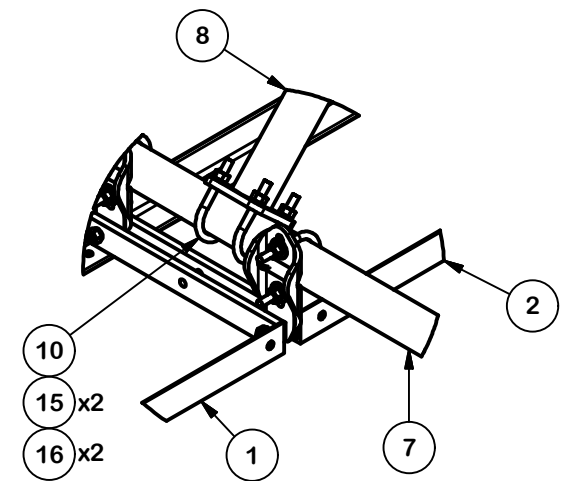
Engineering
Support Team:
1-888-753-7446

Locations:
New York, NY
Atlanta, GA
Los Angeles, CA
Plymouth, IN
Salem, OR
Dallas, TX

PART NO. CSRT-34-81212	
DWG. NO. CSRT-34-81212	



DETAIL I



DETAIL J

TOLERANCE NOTES

TOLERANCES ON DIMENSIONS, UNLESS OTHERWISE NOTED ARE:
 SAWED, SHEARED AND GAS CUT EDGES ($\pm 0.030"$)
 DRILLED AND GAS CUT HOLES ($\pm 0.030"$) - NO CONING OF HOLES
 LASER CUT EDGES AND HOLES ($\pm 0.010"$) - NO CONING OF HOLES
 BENDS ARE $\pm 1/2$ DEGREE
 ALL OTHER MACHINING ($\pm 0.030"$)
 ALL OTHER ASSEMBLY ($\pm 0.060"$)

PROPRIETARY NOTE:
 THE DATA AND TECHNIQUES CONTAINED IN THIS DRAWING ARE PROPRIETARY INFORMATION OF VALMONT INDUSTRIES AND CONSIDERED A TRADE SECRET. ANY USE OR DISCLOSURE WITHOUT THE CONSENT OF VALMONT INDUSTRIES IS STRICTLY PROHIBITED.

DESCRIPTION			
CONSTRUCTOR-SET ROOF TOP - 3 SIDED NON-PENETRATING, 12' FACE, 4 MASTS			
CPD NO.	DRAWN BY	ENG. APPROVAL	
	JFS 7/20/2021		
CLASS	SUB	DRAWING USAGE	CHECKED BY
01	01	CUSTOMER	

SITE PRO 1 A valmont COMPANY		Locations: New York, NY Atlanta, GA Los Angeles, CA Plymouth, IN Salem, OR Dallas, TX
Engineering Support Team: 1-888-753-7446		
PART NO.	CSRT-34-81212	
DWG. NO.	CSRT-34-81212	