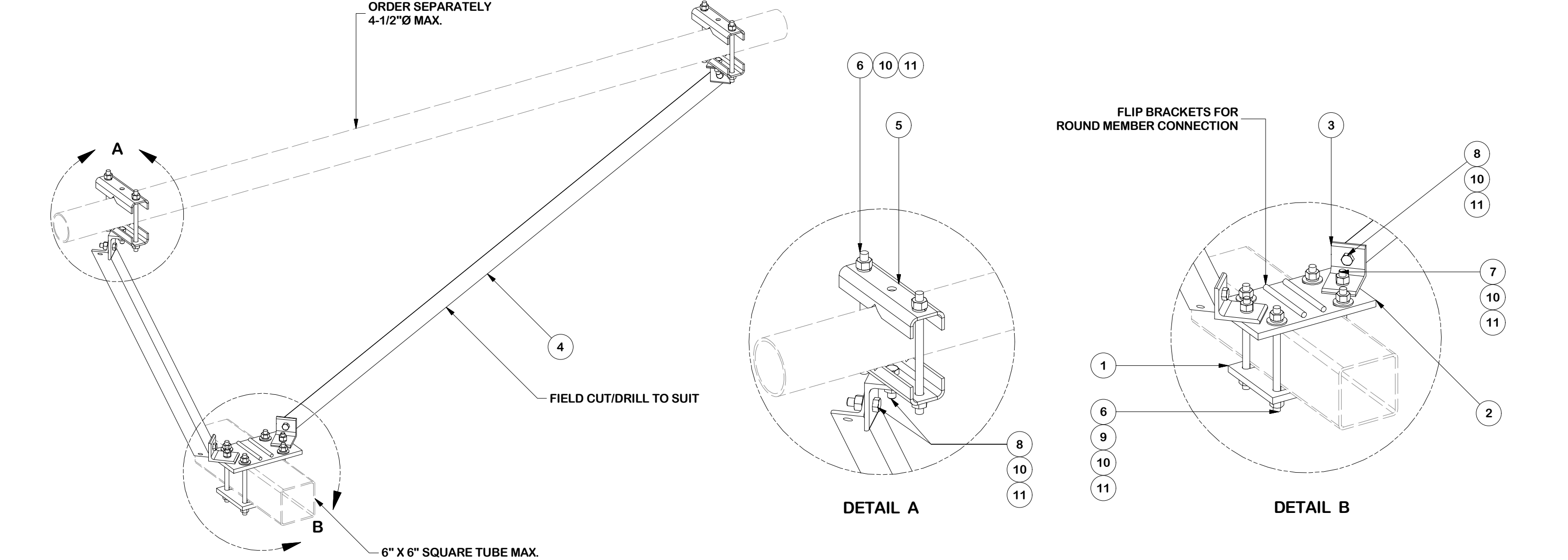


PARTS LIST						
ITEM	QTY	PART NO.	PART DESCRIPTION	LENGTH	UNIT WT.	NET WT.
1	1	PL625-7259	SUPPORT RAIL BRACKING PLATE WELDMENT		11.71	11.71
2	1	PL625-72512	SUPPORT RAIL BRACING MAIN PLATE WELDMENT		16.36	16.36
3	4	AL-433	ANGLE BRACKET	3 in	2.18	8.71
4	2	L252525-8	ANGLE BRACE (FIELD MODIFICATION REQUIRED)	96 in	34.52	69.04
5	4	BP6875-10	BENT PLATE BRACKET	10 in	3.82	15.30
6	8	G58R-10	5/8" x 10" THREADED ROD (HDG.)		0.87	6.97
7	2	A582114	5/8" x 2-1/4" HDG A325 HEX BOLT	2 1/4 in	0.31	0.62
8	6	A5802	5/8" x 2" HDG A325 HEX BOLT		0.27	1.63
9	8	G58FW	5/8" HDG USS FLATWASHER	1/8 in	0.07	0.56
10	24	G58LW	5/8" HDG LOCKWASHER		0.03	0.63
11	24	G58NUT	5/8" HDG HEAVY 2H HEX NUT		0.13	3.12
					TOTAL WT. #	131.17



FINISH:  
HOT DIP GALVANIZED.

TOLERANCE NOTES

TOLERANCES ON DIMENSIONS, UNLESS OTHERWISE NOTED ARE:  
SAWED, SHEARED AND GAS CUT EDGES (± 0.030")  
DRILLED AND GAS CUT HOLES (± 0.030") - NO CONING OF HOLES  
LASER CUT EDGES AND HOLES (± 0.010") - NO CONING OF HOLES  
BENDS AND ANGLES ARE ± 1/2 DEGREE  
ALL OTHER MACHINING (± 0.030")  
ALL OTHER ASSEMBLY (± 0.060")

PROPRIETARY NOTE:  
THE DATA AND TECHNIQUES CONTAINED IN THIS DRAWING ARE PROPRIETARY INFORMATION OF VALMONT INDUSTRIES AND CONSIDERED A TRADE SECRET. ANY USE OR DISCLOSURE WITHOUT THE CONSENT OF VALMONT INDUSTRIES IS STRICTLY PROHIBITED.

DESCRIPTION  
UNIVERSAL DIAGONAL SUPPORT RAIL  
BRACE KIT

CPD NO.		DRAWN BY CMFL 6/24/2021		ENG. APPROVAL	
CLASS 87	SUB 02	DRAWING USAGE CUSTOMER		CHECKED BY	

SITE PRO 1

A valmont COMPANY

Locations:  
New York, NY  
Atlanta, GA  
Los Angeles, CA  
Plymouth, IN  
Salem, OR  
Dallas, TX  
Tampa, FL

Engineering  
Support Team:  
1-888-753-7446

PART NO.	DSRB-U
DWG. NO.	DSRB-U