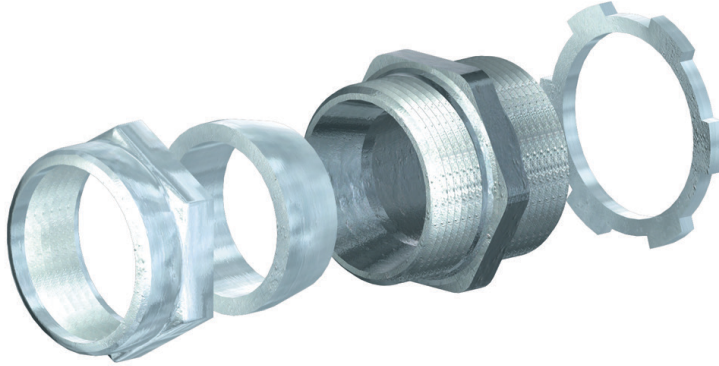


## ENCxx: Coax Entry Connectors



### Features:

- Tapered NPT threaded hub for sealing 1/2" or 7/8" coax lines

### Construction:

- Malleable iron/zinc plated body, PVC grommet

### Design Criteria:

- Used with our CE09 Coax/Electrical Entry for watertight installations

Part #	Cable Range Dia. over Jacket		Hub Size (inches)	Throat I.D.	Body Length	Thread Length	Max. Dia.	Weight
	Min.	Max.						
ENC12	0.500" - 0.600"		1"	0.96"	1-1/4"	5/8"	1-5/8"	0.30 lb.
ENC78	1.000" - 1.200"		1-1/4"	1.20"	1-3/4"	5/8"	2-1/16"	0.45 lb.