

PARTS LIST						
ITEM	QTY	PART NO.	PART DESCRIPTION	LENGTH	UNIT WT.	NET WT.
1	3	X-LPP-SA12	SIDE ARM WELDMENT FOR 12' LOW PROFILE PLATFORMS		119.21	357.63
2	3	X-LPP-CW	LOW PROFILE PLATFORM CORNER WELDMENT		198.75	596.26
3	3	X-RM3HD	WELDMENT FOR 3-SIDED HEAVY DUTY RING MOUNT		84.42	253.25
4	3	X-WWSP3	WALKWAY CORNER SUPPORT PLATE FOR 3-SIDED PLATFORM	12 in	9.00	27.01
5	12	X-LPP-PC	FACE PIPE CONNECTION BRACKET FORTRESS PLATFORM		7.01	84.11
6	15	X-WWSB	WALKWAY SUPPORT BRACKET		6.73	100.94
7	15	X-SCX3-FR	FORTRESS CROSSOVER PLATE		6.61	99.21
8	12	X-LPP-A7	CORNER WELDMENT ATTACHMENT ANGLE	2 1/2 in	1.27	15.25
9	3	GRS12-12	12" WIDE GRIP STRUT	120 in	31.00	93.00
10	3	P30150	2-7/8" X 150" (2-1/2" SCH. 40) GALVANIZED PIPE	150 in	76.94	230.81
11	15	P30120	2-7/8" x 120" (2-1/2" SCH. 40) GALVANIZED PIPE	120 in	58.07	870.99
12	12	G58R-48	5/8" x 48" THREADED ROD (HDG.)	48 in	0.40	4.79
12	12	G58R-24	5/8" x 24" THREADED ROD (HDG.)	24 in	0.40	4.79
13	6	G58R-8	5/8" x 8" THREADED ROD (HDG.)		0.70	4.18
14	36	G58214	5/8" x 2-1/4" HDG HEX BOLT GR5		0.29	10.49
15	12	X-UB5304	5/8" X 3" X 4-1/4" X 2-1/2" U-BOLT (HDG.)		0.98	11.70
16	60	X-UB5300	5/8" X 3" X 5-1/4" X 2-1/2" U-BOLT (HDG.)		1.15	68.97
17	30	X-UB5258	5/8" X 2-5/8" X 4-1/2" X 2" U-BOLT (HDG.)		1.00	30.00
18	192	G58FW	5/8" HDG USS FLATWASHER	1/8 in	0.07	13.53
19	216	G58LW	5/8" HDG LOCKWASHER		0.03	5.64
20	216	G58NUT	5/8" HDG HEAVY 2H HEX NUT		0.13	28.06
21	30	X-UB3312	3/8" X 3-1/2" X 4-3/4" X 2" U-BOLT (HDG.)		0.73	21.95
22	60	G3802	3/8" x 2" HDG HEX BOLT GR5		0.09	5.26
23	48	SQW38	3/8" SQUARE WASHER	2 in	0.29	13.89
24	120	G38FW	3/8" HDG USS FLATWASHER		0.01	1.41
25	120	G38LW	3/8" HDG LOCKWASHER		0.01	0.80
26	120	G38NUT	3/8" HDG HEAVY 2H HEX NUT		0.03	4.06
27	1	HALO	HALO		40.35	40.35
					TOTAL WT. #	3023.66

TOLERANCE NOTES

TOLERANCES ON DIMENSIONS, UNLESS OTHERWISE NOTED ARE:
 SAWED, SHEARED AND GAS CUT EDGES ($\pm 0.030"$)
 DRILLED AND GAS CUT HOLES ($\pm 0.030"$) - NO CONING OF HOLES
 LASER CUT EDGES AND HOLES ($\pm 0.010"$) - NO CONING OF HOLES
 BENDS ARE $\pm 1/2$ DEGREE
 ALL OTHER MACHINING ($\pm 0.030"$)
 ALL OTHER ASSEMBLY ($\pm 0.060"$)

PROPRIETARY NOTE:
 THE DATA AND TECHNIQUES CONTAINED IN THIS DRAWING ARE PROPRIETARY INFORMATION OF VALMONT INDUSTRIES AND CONSIDERED A TRADE SECRET. ANY USE OR DISCLOSURE WITHOUT THE CONSENT OF VALMONT INDUSTRIES IS STRICTLY PROHIBITED.

DESCRIPTION

F3P-12-WLL

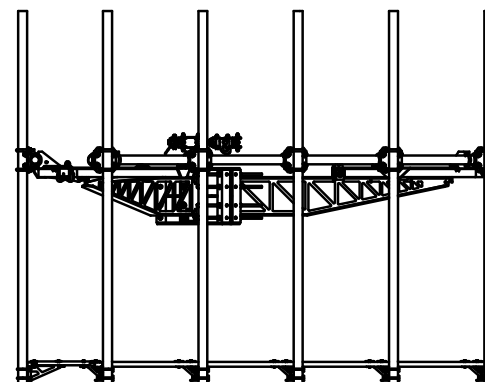
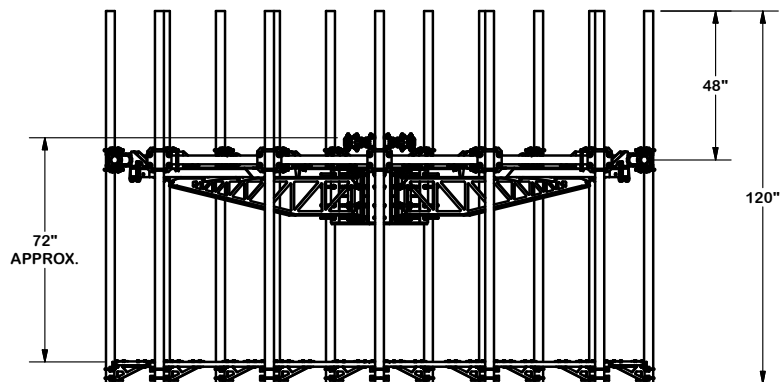
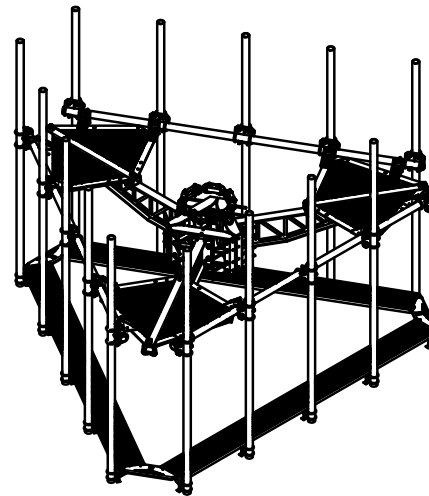
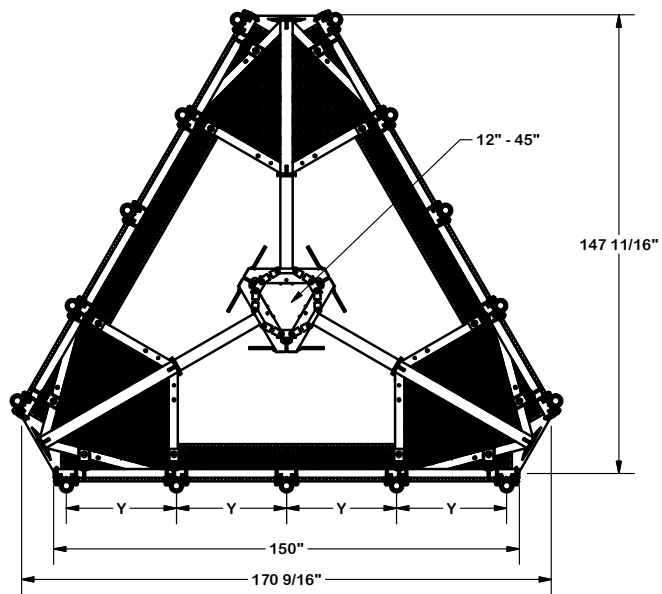
CPD NO.	DRAWN BY	ENG. APPROVAL
	CEK 10/26/2017	
CLASS	DRAWING USAGE	CHECKED BY
81	CUSTOMER	BMC 11/1/2017



Engineering
 Support Team:
 1-888-753-7446

Locations:
 New York, NY
 Atlanta, GA
 Los Angeles, CA
 Plymouth, IN
 Salem, OR
 Dallas, TX

PART NO.	F3P-12-WLL	PAGE
DWG. NO.	F3P-12-WLL	1 OF 4



TOLERANCE NOTES

TOLERANCES ON DIMENSIONS, UNLESS OTHERWISE NOTED ARE:
 SAWED, SHEARED AND GAS CUT EDGES ($\pm 0.030"$)
 DRILLED AND GAS CUT HOLES ($\pm 0.030"$) - NO CONING OF HOLES
 LASER CUT EDGES AND HOLES ($\pm 0.010"$) - NO CONING OF HOLES
 BENDS ARE $\pm 1/2$ DEGREE
 ALL OTHER MACHINING ($\pm 0.030"$)
 ALL OTHER ASSEMBLY ($\pm 0.060"$)

PROPRIETARY NOTE:
 THE DATA AND TECHNIQUES CONTAINED IN THIS DRAWING ARE PROPRIETARY INFORMATION OF VALMONT INDUSTRIES AND CONSIDERED A TRADE SECRET. ANY USE OR DISCLOSURE WITHOUT THE CONSENT OF VALMONT INDUSTRIES IS STRICTLY PROHIBITED.

DESCRIPTION

F3P-12-WLL

CPD NO.

DRAWN BY

ENG. APPROVAL

CLASS

SUB

DRAWING USAGE

CHECKED BY

PART NO.

F3P-12-WLL

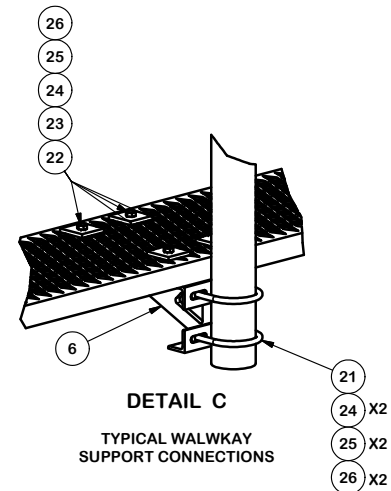
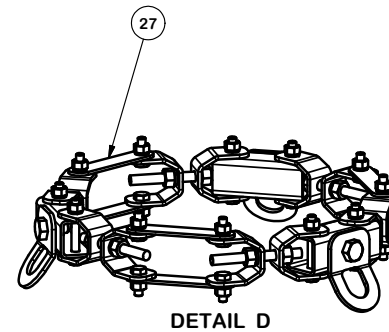
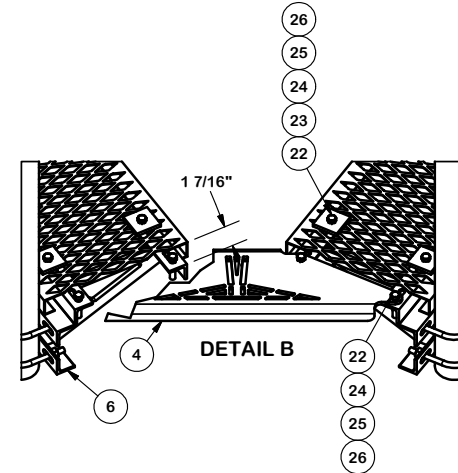
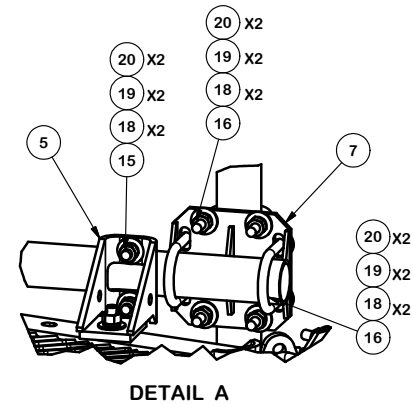
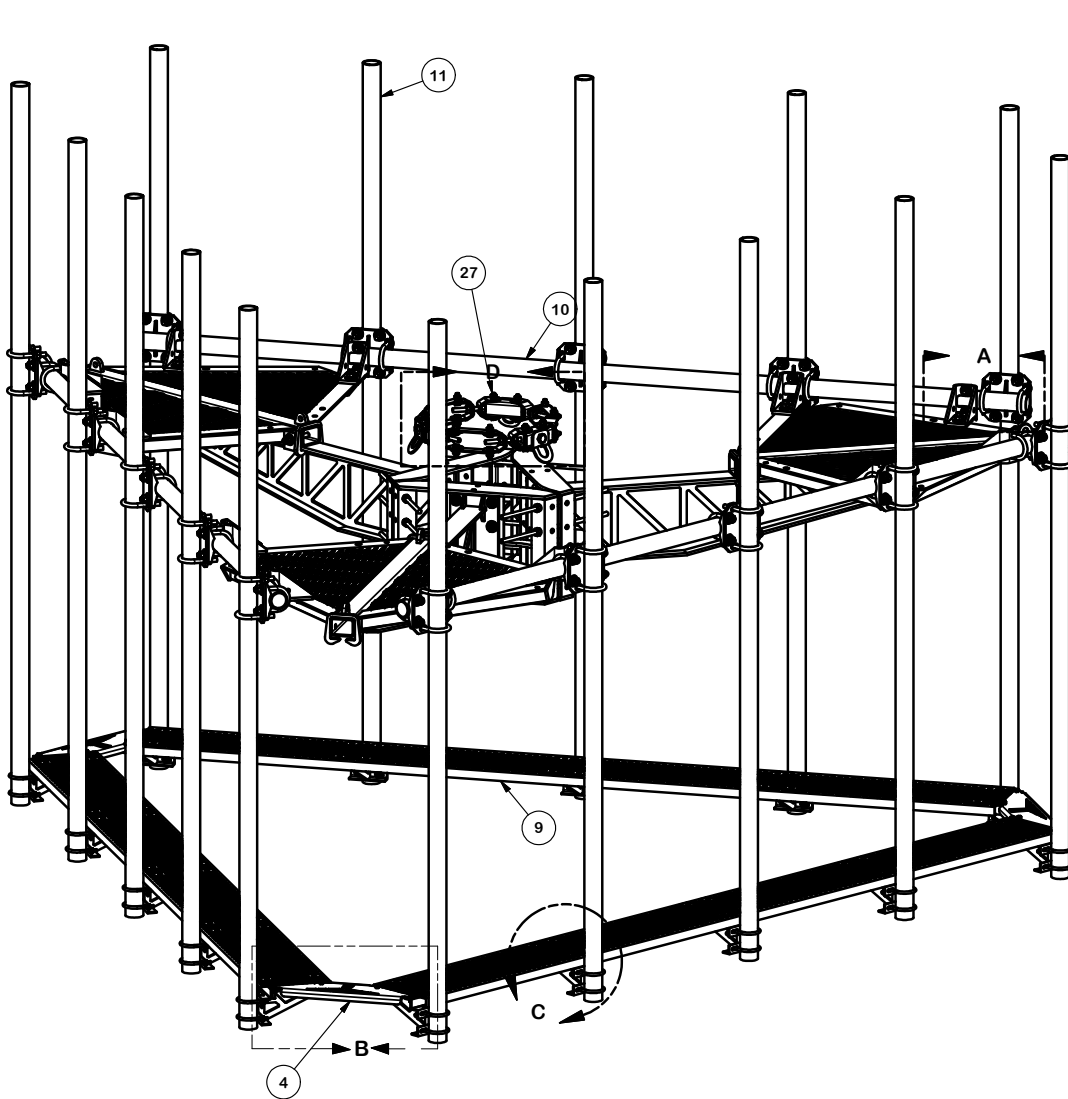
DWG. NO.

F3P-12-WLL



Engineering
 Support Team:
 1-888-753-7446

Locations:
 New York, NY
 Atlanta, GA
 Los Angeles, CA
 Plymouth, IN
 Salem, OR
 Dallas, TX



TOLERANCE NOTES

TOLERANCES ON DIMENSIONS, UNLESS OTHERWISE NOTED ARE:
 SAWED, SHEARED AND GAS CUT EDGES ($\pm 0.030"$)
 DRILLED AND GAS CUT HOLES ($\pm 0.030"$) - NO CONING OF HOLES
 LASER CUT EDGES AND HOLES ($\pm 0.010"$) - NO CONING OF HOLES
 BENDS ARE $\pm 1/2$ DEGREE
 ALL OTHER MACHINING ($\pm 0.030"$)
 ALL OTHER ASSEMBLY ($\pm 0.060"$)

PROPRIETARY NOTE:
 THE DATA AND TECHNIQUES CONTAINED IN THIS DRAWING ARE PROPRIETARY INFORMATION OF VALMONT INDUSTRIES AND CONSIDERED A TRADE SECRET. ANY USE OR DISCLOSURE WITHOUT THE CONSENT OF VALMONT INDUSTRIES IS STRICTLY PROHIBITED.

DESCRIPTION

F3P-12-WLL

CPD NO.

DRAWN BY

ENG. APPROVAL

CLASS

SUB

DRAWING USAGE

CHECKED BY

PART NO.

F3P-12-WLL

DWG. NO.

F3P-12-WLL

PAGE
3 OF 4

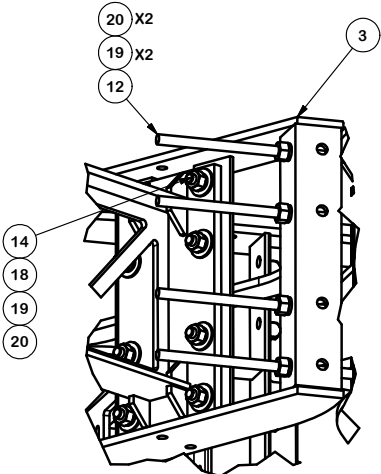
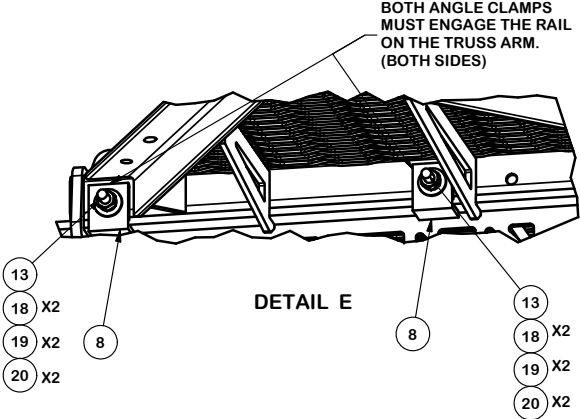
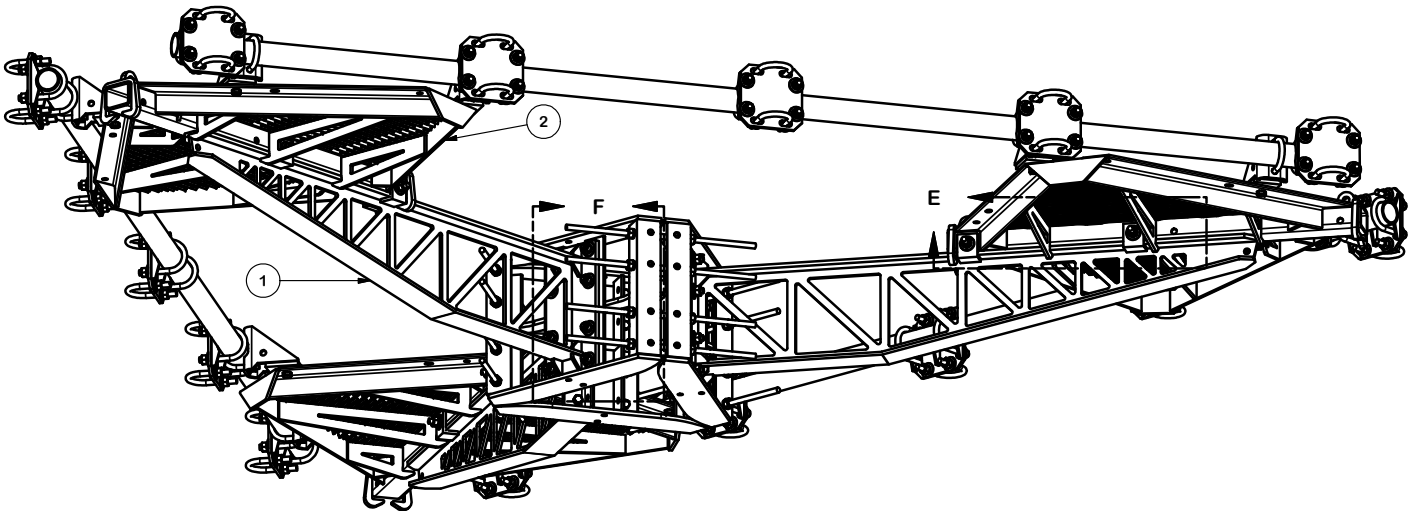


Engineering
 Support Team:
 1-888-753-7446

Locations:
 New York, NY
 Atlanta, GA
 Los Angeles, CA
 Plymouth, IN
 Salem, OR
 Dallas, TX

NOTE:

ANTENNA MOUNTING PIPES AND WALKWAY
REMOVED FOR CLAIRTY



TOLERANCE NOTES

TOLERANCES ON DIMENSIONS, UNLESS OTHERWISE NOTED ARE:
SAWED, SHEARED AND GAS CUT EDGES ($\pm 0.030"$)
DRILLED AND GAS CUT HOLES ($\pm 0.030"$) - NO CONING OF HOLES
LASER CUT EDGES AND HOLES ($\pm 0.010"$) - NO CONING OF HOLES
BENDS ARE $\pm 1/2$ DEGREE
ALL OTHER MACHINING ($\pm 0.030"$)
ALL OTHER ASSEMBLY ($\pm 0.060"$)

PROPRIETARY NOTE:
THE DATA AND TECHNIQUES CONTAINED IN THIS DRAWING ARE PROPRIETARY INFORMATION OF VALMONT INDUSTRIES AND CONSIDERED A TRADE SECRET. ANY USE OR DISCLOSURE WITHOUT THE CONSENT OF VALMONT INDUSTRIES IS STRICTLY PROHIBITED.

DESCRIPTION
F3P-12-WLL

CPD NO.	DRAWN BY CEK 10/26/2017	ENG. APPROVAL
CLASS 81	SUB 02	DRAWING USAGE CUSTOMER
	CHECKED BY BMC 11/1/2017	



Engineering
Support Team:
1-888-753-7446

Locations:
New York, NY
Atlanta, GA
Los Angeles, CA
Plymouth, IN
Salem, OR
Dallas, TX

PART NO.	F3P-12-WLL	PAGE 4 OF 4
DWG. NO.	F3P-12-WLL	