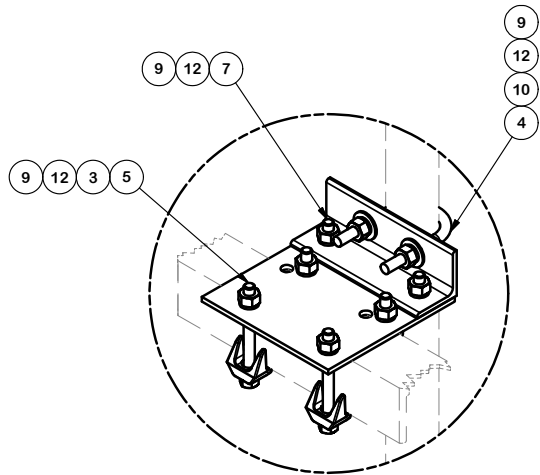
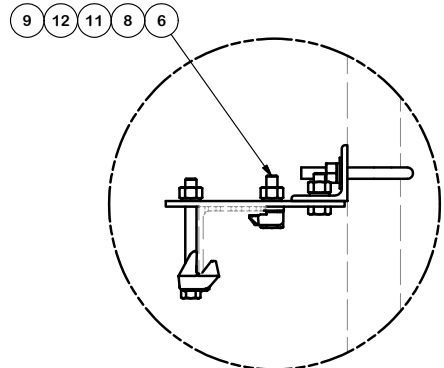


PARTS LIST						
ITEM	QTY	PART NO.	PART DESCRIPTION	LENGTH	UNIT WT.	NET WT.
1	2	X-99471	1/4" x 8" FLAT STOCK (A36)	8 in	4.37	8.73
2	2	X-25266	2 1/2" x 2 1/2" x 1/4" ANGLE (A36)	8 in	2.62	5.23
3	4	X-LDC	LINDAPTER TYPE C		0.55	2.20
4	2	X-UB1212	1/2" X 2-1/2" X 4-1/2" X 2" U-BOLT (HDG.)		0.63	1.25
5	4	G1205	1/2" x 5" HDG HEX BOLT GR5 FULL THREAD	2 in	0.33	1.30
6	4	G1202	1/2" x 2" HDG HEX BOLT GR5	2 in	0.18	0.70
7	4	G12112	1/2" x 1-1/2" HDG HEX BOLT GR5	1 1/2 in	0.15	0.59
8	4	X-LDA	LINDAPTER TYPE A SHORT TAIL		0.13	0.54
9	16	G12NUT	1/2" HDG HEAVY 2H HEX NUT		0.07	1.15
10	4	G12FW	1/2" HDG USS FLATWASHER		0.03	0.14
11	4	G12CW	1/2" CLIP WASHER (GALV.)		0.03	0.13
12	16	G12LW	1/2" HDG LOCKWASHER		0.01	0.22
					TOTAL WT. #	22.08

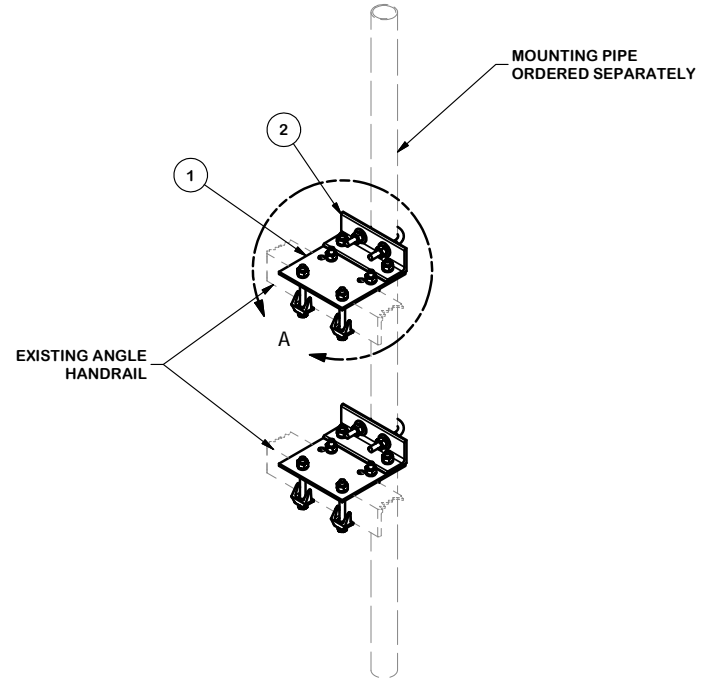
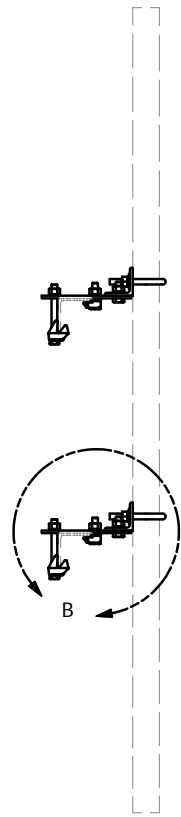


DETAIL A

NOTE:
 FOR 1/8" & 3/16" THICK
 ANGLE USE "X-LDA" FOR 1/4"
 THICK ANGLE USE "X-LDA" & "G12CW"



DETAIL B



TOLERANCE NOTES
 TOLERANCES ON DIMENSIONS, UNLESS OTHERWISE NOTED ARE:
 SAWED, SHEARED AND GAS CUT EDGES ($\pm 0.030"$)
 DRILLED AND GAS CUT HOLES ($\pm 0.030"$) - NO CONING OF HOLES
 LASER CUT EDGES AND HOLES ($\pm 0.010"$) - NO CONING OF HOLES
 BENDS ARE $\pm 1/2$ DEGREE
 ALL OTHER MACHINING ($\pm 0.030"$)
 ALL OTHER ASSEMBLY ($\pm 0.060"$)

PROPRIETARY NOTE:
 THE DATA AND TECHNIQUES CONTAINED IN THIS DRAWING ARE PROPRIETARY INFORMATION OF VALMONT INDUSTRIES AND CONSIDERED A TRADE SECRET. ANY USE OR DISCLOSURE WITHOUT THE CONSENT OF VALMONT INDUSTRIES IS STRICTLY PROHIBITED.

DESCRIPTION		HANDRAIL MOUNT BRACKET (ANGLE)	
CPD NO.	DRAWN BY	ENG. APPROVAL	
	CEK 1/21/2011		
CLASS	SUB	DRAWING USAGE	CHECKED BY
81	01	CUSTOMER	BMC 2/10/2011

 A valmont COMPANY	Locations: New York, NY Atlanta, GA Los Angeles, CA Plymouth, IN Salem, OR Dallas, TX
	Engineering Support Team: 1-888-753-7446
PART NO.	HMB-A
DWG. NO.	HMB-A