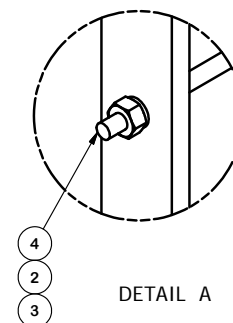


PARTS LIST						
ITEM	QTY	PART NO.	PART DESCRIPTION	LENGTH	UNIT WT.	NET WT.
1	1	X-232500	2' STANDOFF WELDMENT		21.66	21.66
2	6	G38LW	3/8" HDG LOCKWASHER		0.01	0.04
3	6	G38NUT	3/8" HDG HEAVY 2H HEX NUT		0.03	0.20
4	3	G38R-12	3/8" x 12" THREADED ROD (HDG.)		0.35	1.05
5	3	SQW38	3/8" SQUARE WASHER (GALV.)	2 in	0.27	0.82
					TOTAL WT. #	23.86



TOLERANCE NOTES

TOLERANCES ON DIMENSIONS, UNLESS OTHERWISE NOTED ARE:
 SAWED, SHEARED AND GAS CUT EDGES ($\pm 0.030"$)
 DRILLED AND GAS CUT HOLES ($\pm 0.030"$) - NO CONING OF HOLES
 LASER CUT EDGES AND HOLES ($\pm 0.010"$) - NO CONING OF HOLES
 BENDS ARE $\pm 1/2$ DEGREE
 ALL OTHER MACHINING ($\pm 0.030"$)
 ALL OTHER ASSEMBLY ($\pm 0.060"$)

PROPRIETARY NOTE:
 THE DATA AND TECHNIQUES CONTAINED IN THIS DRAWING ARE PROPRIETARY INFORMATION OF VALMONT INDUSTRIES AND CONSIDERED A TRADE SECRET. ANY USE OR DISCLOSURE WITHOUT THE CONSENT OF VALMONT INDUSTRIES IS STRICTLY PROHIBITED.

DESCRIPTION
**2' LIGHTWEIGHT
 STANDOFF ARM**

SITE PRO 1
 Engineering Support Team:
 1-888-753-7446
 Locations:
 New York, NY
 Atlanta, GA
 Los Angeles, CA
 Plymouth, IN
 Salem, OR
 Dallas, TX

CPD NO. 4860	DRAWN BY CEK 9/17/2010	ENG. APPROVAL
CLASS 81	SUB 01	DRAWING USAGE CUSTOMER
CHECKED BY BMC 9/17/2010		

PART NO. LWSA-2	PAGE 1 OF 1
DWG. NO. LWSA-2	