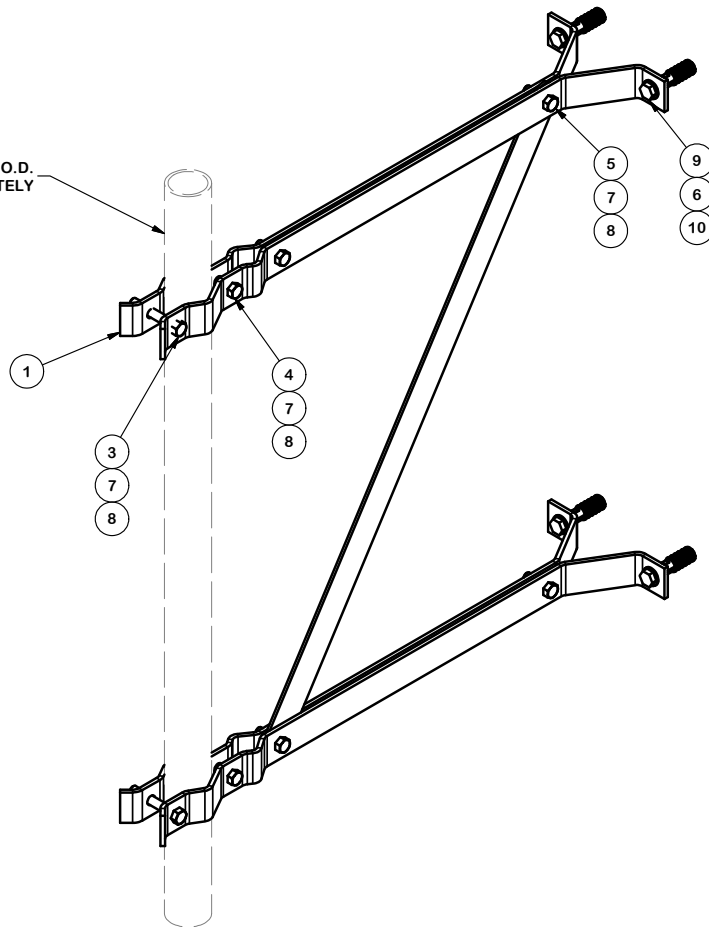


1" - 2.375" O.D.
PIPE SOLD SEPARATELY



PARTS LIST					
ITEM	QTY	PART DESCRIPTION	LENGTH	UNIT WT.	NET WT.
1	4	LIGHTWEIGHT WALL MOUNT BRACKET, 24" STANDOFF		2.32	9.28
2	1	DIAGONAL BRACE FOR 24" WALLMOUNT BRACKET		1.57	1.57
3	4	3/8" X 2.5" GALV. BOLT		0.10	0.40
4	2	3/8" X 1.75" GALV. BOLT		0.08	0.15
5	4	3/8" x 1.25" HEX BOLT		0.06	0.24
6	4	3/8" GALV FLAT WASHER		0.01	0.03
7	8	3/8" GALV LOCK WASHER		0.01	0.05
8	8	3/8"-16 UNC GALV HEX NUT		0.02	0.15
9	4	3/8" X 2-1/2" GALV LAG SCREW		0.07	0.27
10	4	3/8" SHORT GALV LAG SHIELD		0.07	0.26
				TOTAL WT. #	12.20

TOLERANCE NOTES

TOLERANCES ON DIMENSIONS, UNLESS OTHERWISE NOTED ARE:
 SAWED, SHEARED AND GAS CUT EDGES ($\pm 0.030"$)
 DRILLED AND GAS CUT HOLES ($\pm 0.030"$) - NO CONING OF HOLES
 LASER CUT EDGES AND HOLES ($\pm 0.010"$) - NO CONING OF HOLES
 BENDS ARE $\pm 1/2$ DEGREE
 ALL OTHER MACHINING ($\pm 0.030"$)
 ALL OTHER ASSEMBLY ($\pm 0.060"$)

PROPRIETARY NOTE:
 THE DATA AND TECHNIQUES CONTAINED IN THIS DRAWING ARE PROPRIETARY INFORMATION OF VALMONT INDUSTRIES AND CONSIDERED A TRADE SECRET. ANY USE OR DISCLOSURE WITHOUT THE CONSENT OF VALMONT INDUSTRIES IS STRICTLY PROHIBITED.

DESCRIPTION

LIGHTWEIGHT WALL
MOUNT, 24" STANDOFF



Engineering
Support Team:
1-888-753-7446

Locations:
New York, NY
Atlanta, GA
Los Angeles, CA
Plymouth, IN
Salem, OR
Dallas, TX

A valmont COMPANY

CPD NO.	DRAWN BY	ENG. APPROVAL
81	CEK 1/20/2015	BMC 2/3/2015
CLASS	SUB	DRAWING USAGE
81	01	CUSTOMER

PART NO.	LWWM24
DWG. NO.	LWWM24