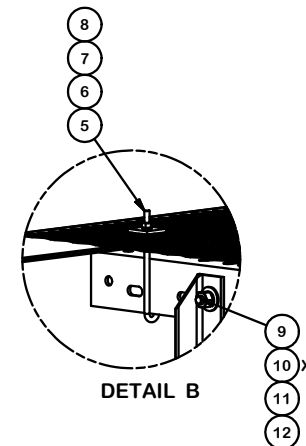
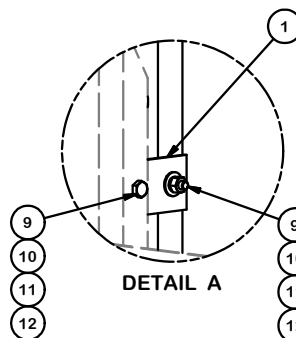


| PARTS LIST | | | | | | |
|------------|-----|----------|--------------------------------------|-----------|-------------|---------|
| ITEM | QTY | PART NO. | PART DESCRIPTION | LENGTH | UNIT WT. | NET WT. |
| 1 | 12 | X-MKPS | MODULAR KICKER PLATE STRAIGHT SPLICE | 6 5/16 in | 1.86 | 22.31 |
| 2 | 6 | X-MCOVUP | UPRIGHT SUPPORT FOR MCOV-4 & MCOV-6 | 120 in | 32.17 | 193.01 |
| 3 | 2 | X-MCOV6 | HORIZTAL SUPPORT ANGLE FOR MCOV-6 | 71 7/8 in | 41.12 | 82.25 |
| 4 | 3 | GRS24 | 24" X 10' GRIP SPAN BRIDGE CHANNEL | | 67.98 | 203.93 |
| 5 | 12 | X-JB8 | J-BOLT, 3/8" X 8" X 6" THREADED | | 0.33 | 3.97 |
| 6 | 12 | SQW38 | 3/8" SQUARE WASHER (GALV.) | 2 in | 0.27 | 3.28 |
| 7 | 12 | G38LW | 3/8" HDG LOCKWASHER | | 0.01 | 0.08 |
| 8 | 12 | G38NUT | 3/8" HDG HEAVY 2H HEX NUT | | 0.03 | 0.41 |
| 9 | 30 | G58134 | 5/8" x 1-3/4" HDG BOLT | 1 3/4 in | 0.27 | 8.07 |
| 10 | 36 | G58FW | 5/8" HDG USS FLATWASHER | 1/8 in | 0.07 | 2.54 |
| 11 | 30 | G58LW | 5/8" HDG LOCKWASHER | 5/32 in | 0.03 | 0.78 |
| 12 | 30 | G58NUT | 5/8" HDG HEAVY 2H HEX NUT | 5/8 in | 0.13 | 3.90 |
| | | | | | TOTAL WT. # | 523.95 |



TOLERANCE NOTES

TOLERANCES ON DIMENSIONS, UNLESS OTHERWISE NOTED ARE:
 SAWED, SHEARED AND GAS CUT EDGES ($\pm 0.030"$)
 DRILLED AND GAS CUT HOLES ($\pm 0.030"$) - NO CONING OF HOLES
 LASER CUT EDGES AND HOLES ($\pm 0.010"$) - NO CONING OF HOLES
 BENDS ARE $\pm 1/2$ DEGREE
 ALL OTHER MACHINING ($\pm 0.030"$)
 ALL OTHER ASSEMBLY ($\pm 0.060"$)

PROPRIETARY NOTE:
 THE DATA AND TECHNIQUES CONTAINED IN THIS DRAWING ARE PROPRIETARY INFORMATION OF VALMONT INDUSTRIES AND CONSIDERED A TRADE SECRET. ANY USE OR DISCLOSURE WITHOUT THE CONSENT OF VALMONT INDUSTRIES IS STRICTLY PROHIBITED.

DESCRIPTION
 6' WIDE X 10' LONG COV
 FOR MODULAR PLATFORM
 HANDRAIL ATTACHMENT

| | | | |
|-------------|-----------------|---------------------------|-----------------------------|
| CPD NO. | DRAWN BY CEK | 3/2/2016 | ENG. APPROVAL |
| CLASS 81 | SUB 01 | DRAWING USAGE CUSTOMER | CHECKED BY BMC 3/13/2016 |

SITE PRO 1
 A valmont COMPANY
 Engineering Support Team:
 1-888-753-7446
 Locations:
 New York, NY
 Atlanta, GA
 Los Angeles, CA
 Plymouth, IN
 Salem, OR
 Dallas, TX

| | | | |
|----------|-----------|------|--------|
| PART NO. | MCOV610-H | PAGE | 1 OF 1 |
| DWG. NO. | MCOV610-H | | |