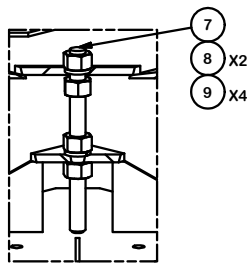


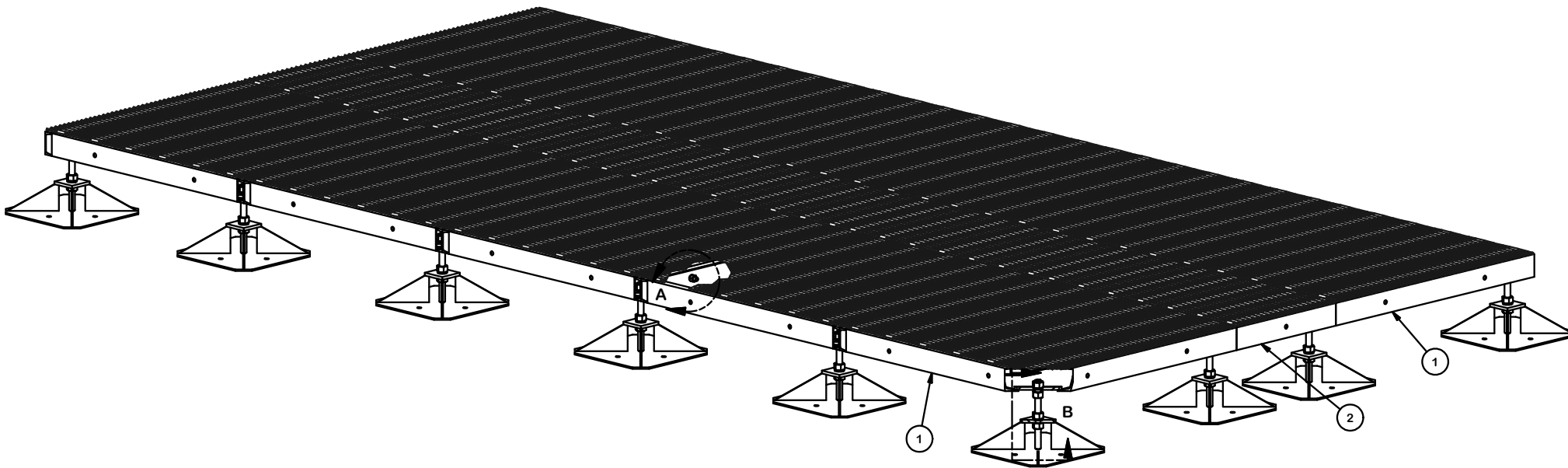
DETAIL A

TYPICAL ALL
PLATFORM TO PLATFORM
CONNECTIONS



DETAIL B

TYPICAL ALL
LEG CONNECTIONS



PARTS LIST						
ITEM	QTY	PART NO.	PART DESCRIPTION	LENGTH	UNIT WT.	NET WT.
1	10	X-MEP44	4' X 4' MODULAR EQUIPMENT PLATFORM BASE		201.72	2017.18
2	5	X-MEP42	4' X 2' MODULAR EQUIPMENT PLATFORM BASE		114.68	573.39
3	40	G58134	5/8" x 1-3/4" HDG BOLT	1 3/4 in	0.27	10.76
4	40	G58LW	5/8" HDG LOCKWASHER		0.03	1.04
5	40	G58NUT	5/8" HDG HEAVY 2H HEX NUT		0.13	5.20
6	24	X-MPADL	MODULAR PLATFORM FOOTPAD LARGE		33.38	801.16
7	24	G1R-12	1" x 12" THREADED ROD (HDG.)	12 in	2.68	64.23
8	48	G1LW	1" LOCK WASHER		0.09	4.54
9	96	G1NUT	1" HDG HEAVY HEX NUT		0.47	45.17
TOTAL WT. #						3505.67

TOLERANCE NOTES

TOLERANCES ON DIMENSIONS, UNLESS OTHERWISE NOTED ARE:
 SAWED, SHEARED AND GAS CUT EDGES ($\pm 0.030"$)
 DRILLED AND GAS CUT HOLES ($\pm 0.030"$) - NO CONING OF HOLES
 LASER CUT EDGES AND HOLES ($\pm 0.010"$) - NO CONING OF HOLES
 BENDS ARE $\pm 1/2$ DEGREE
 ALL OTHER MACHINING ($\pm 0.030"$)
 ALL OTHER ASSEMBLY ($\pm 0.060"$)

PROPRIETARY NOTE:
 THE DATA AND TECHNIQUES CONTAINED IN THIS DRAWING ARE PROPRIETARY INFORMATION OF VALMONT INDUSTRIES AND CONSIDERED A TRADE SECRET. ANY USE OR DISCLOSURE WITHOUT THE CONSENT OF VALMONT INDUSTRIES IS STRICTLY PROHIBITED.

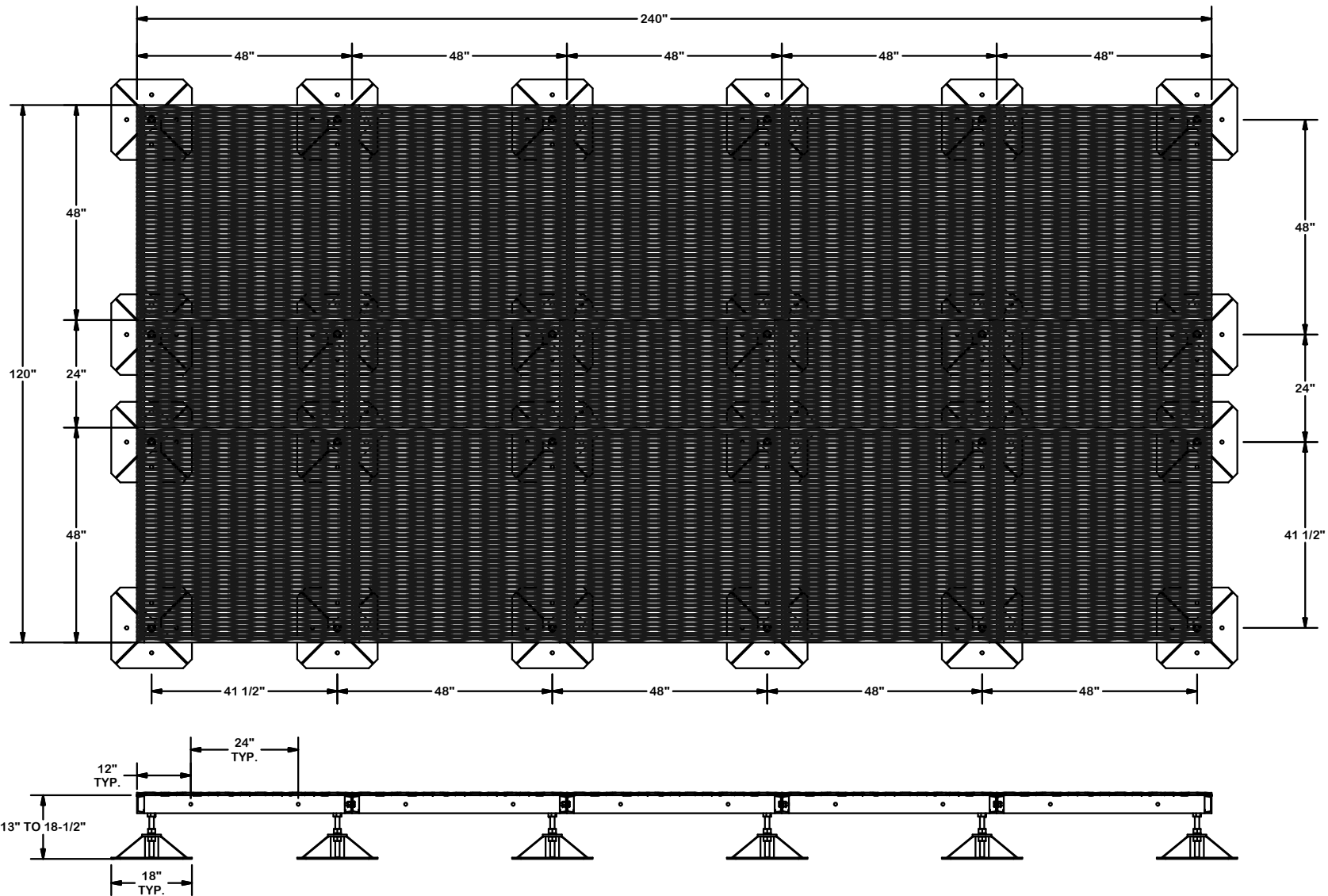
DESCRIPTION
 10' X 20'
 MODULAR EQUIPMENT PLATFORM
 WITH LARGE FOOTPADS

SITE PRO 1
 A valmont COMPANY
 Engineering Support Team:
 1-888-753-7446
 Locations:
 New York, NY
 Atlanta, GA
 Los Angeles, CA
 Plymouth, IN
 Salem, OR
 Dallas, TX

REV	DESCRIPTION OF REVISIONS	CPD	BY	DATE
A	REVISED LEG POSITION		CEK	4/11/2016
REVISION HISTORY				

CPD NO.	DRAWN BY	ENG. APPROVAL
	CEK 3/29/2016	
CLASS	SUB	DRAWING USAGE
81	01	CUSTOMER
CHECKED BY	DATE	
BMC	4/7/2016	


PART NO.	DWG. NO.
MEP1020-4L	MEP1020-4L



TOLERANCE NOTES
 TOLERANCES ON DIMENSIONS, UNLESS OTHERWISE NOTED ARE:
 SAWED, SHEARED AND GAS CUT EDGES (± 0.030 ")
 DRILLED AND GAS CUT HOLES (± 0.030 ") - NO CONING OF HOLES
 LASER CUT EDGES AND HOLES (± 0.010 ") - NO CONING OF HOLES
 BENDS ARE $\pm 1/2$ DEGREE
 ALL OTHER MACHINING (± 0.030 ")
 ALL OTHER ASSEMBLY (± 0.060 ")

PROPRIETARY NOTE:
 THE DATA AND TECHNIQUES CONTAINED IN THIS DRAWING ARE PROPRIETARY INFORMATION OF VALMONT INDUSTRIES AND CONSIDERED A TRADE SECRET. ANY USE OR DISCLOSURE WITHOUT THE CONSENT OF VALMONT INDUSTRIES IS STRICTLY PROHIBITED.

DESCRIPTION		10' X 20' MODULAR EQUIPMENT PLATFORM WITH LARGE FOOTPADS	
CPD NO.	DRAWN BY	ENG. APPROVAL	
	CEK 3/29/2016		
CLASS	SUB	DRAWING USAGE	CHECKED BY
81	01	CUSTOMER	BMC 4/7/2016

 A valmont COMPANY	Locations: New York, NY Atlanta, GA Los Angeles, CA Plymouth, IN Salem, OR Dallas, TX	
	Engineering Support Team: 1-888-753-7446	
PART NO.	MEP1020-4L	PAGE 2 OF 2
DWG. NO.	MEP1020-4L	

REV	DESCRIPTION OF REVISIONS	CPD	BY	DATE
A	REVISED LEG POSITION		CEK	4/11/2016
REVISION HISTORY				