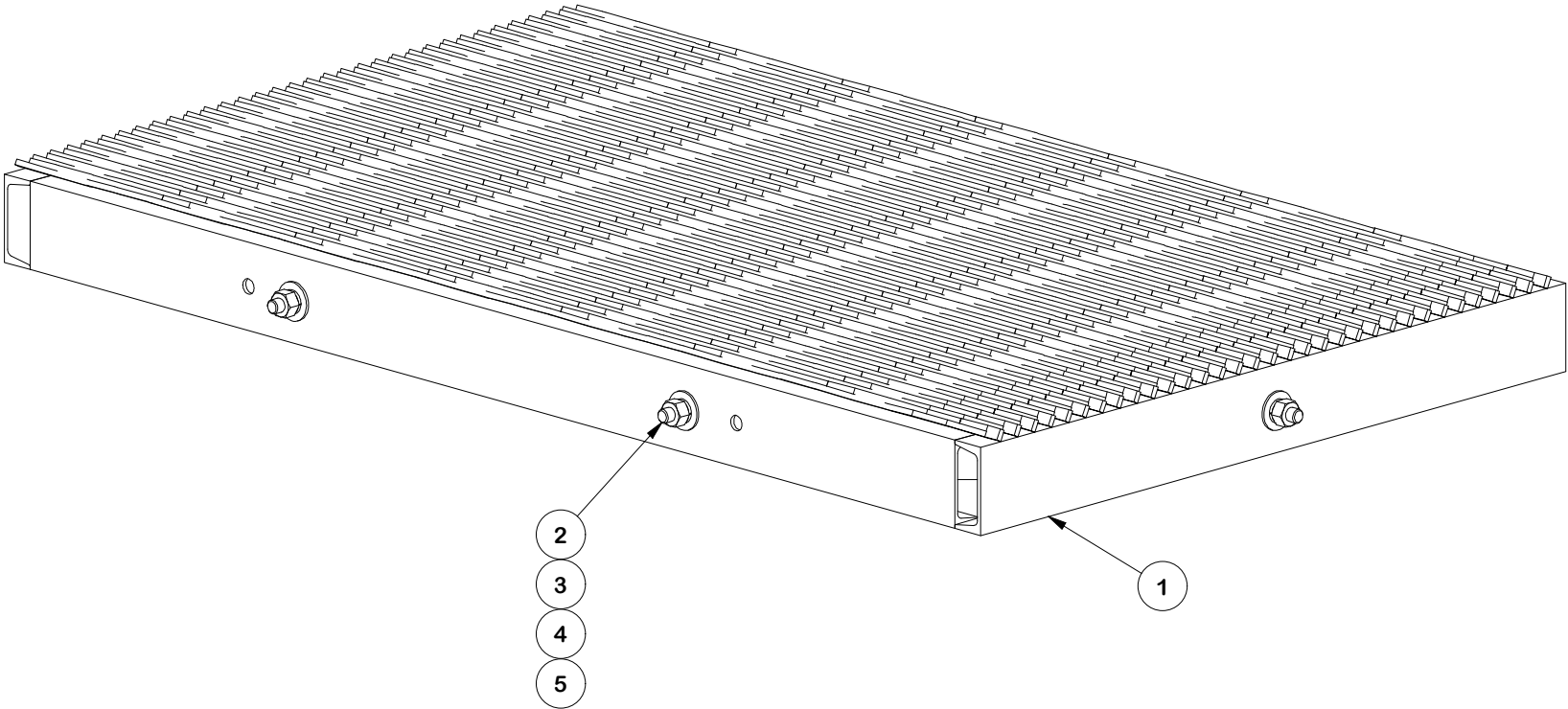


PARTS LIST					
ITEM	QTY	PART NO.	PART DESCRIPTION	LENGTH	UNIT WT.
1	1	X-MEP53	5' X 3' MODULAR EQUIPMENT RACK BASE		216.33
2	3	G58134	5/8" x 1-3/4" HDG BOLT	1 3/4 in	0.27
3	3	G58FW	5/8" HDG USS FLATWASHER	1/8 in	0.07
4	3	G58LW	5/8" HDG LOCKWASHER		0.03
5	3	G58NUT	5/8" HDG HEAVY 2H HEX NUT		0.13
TOTAL WT. #					314.82



NOTE:
INCLUDES ATTACHMENT HARDARE
FOR TWO SIDES OF PLATFORM

TOLERANCE NOTES

TOLERANCES ON DIMENSIONS, UNLESS OTHERWISE NOTED ARE:
SAWED, SHEARED AND GAS CUT EDGES ($\pm 0.030''$)
DRILLED AND GAS CUT HOLES ($\pm 0.030''$) - NO CONING OF HOLES
LASER CUT EDGES AND HOLES ($\pm 0.010''$) - NO CONING OF HOLES
BENDS ARE $\pm 1/2$ DEGREE
ALL OTHER MACHINING ($\pm 0.030''$)
ALL OTHER ASSEMBLY ($\pm 0.060''$)

PROPRIETARY NOTE:
THE DATA AND TECHNIQUES CONTAINED IN THIS DRAWING ARE PROPRIETARY INFORMATION OF VALMONT INDUSTRIES AND CONSIDERED A TRADE SECRET. ANY USE OR DISCLOSURE WITHOUT THE CONSENT OF VALMONT INDUSTRIES IS STRICTLY PROHIBITED.

DESCRIPTION

5' X 3' MODULAR
EQUIPMENT PLATFORM BASE

CPD NO.		DRAWN BY CEK 6/5/2023		ENG. APPROVAL	
CLASS 81	SUB 02	DRAWING USAGE CUSTOMER		CHECKED BY JET 6/5/2023	

SITE
PRO

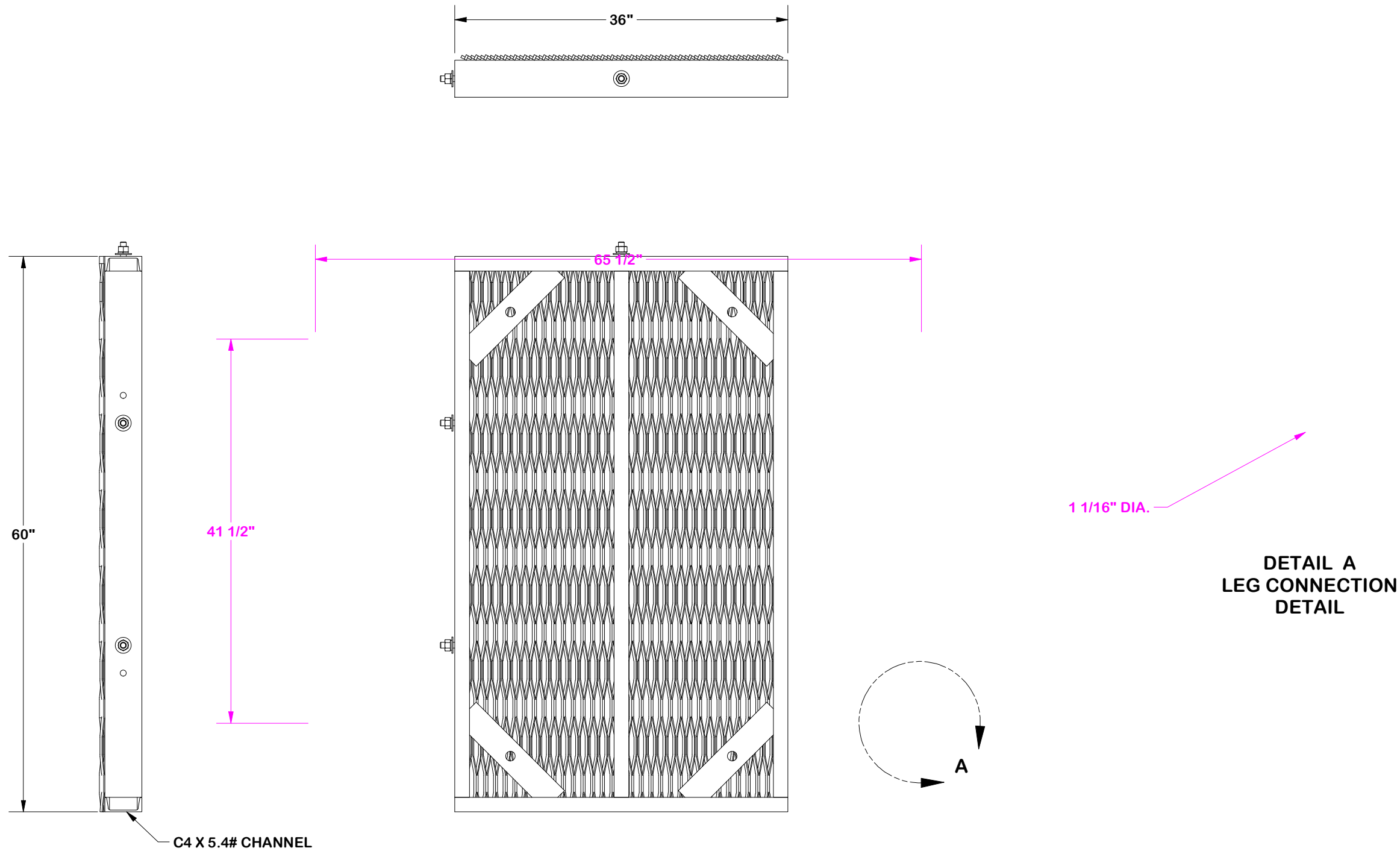
1

A valmont COMPANY

Locations:
New York, NY
Atlanta, GA
Los Angeles, CA
Plymouth, IN
Salem, OR
Dallas, TX

Engineering
Support Team:
1-888-753-7446

PART NO.	MEP53
DWG. NO.	MEP53



TOLERANCE NOTES

TOLERANCES ON DIMENSIONS, UNLESS OTHERWISE NOTED ARE:
SAWED, SHEARED AND GAS CUT EDGES ($\pm 0.030"$)
DRILLED AND GAS CUT HOLES ($\pm 0.030"$) - NO CONING OF HOLES
LASER CUT EDGES AND HOLES ($\pm 0.010"$) - NO CONING OF HOLES
BENDS ARE $\pm 1/2$ DEGREE
ALL OTHER MACHINING ($\pm 0.030"$)
ALL OTHER ASSEMBLY ($\pm 0.060"$)

PROPRIETARY NOTE:
THE DATA AND TECHNIQUES CONTAINED IN THIS DRAWING ARE PROPRIETARY INFORMATION OF VALMONT INDUSTRIES AND CONSIDERED A TRADE SECRET. ANY USE OR DISCLOSURE WITHOUT THE CONSENT OF VALMONT INDUSTRIES IS STRICTLY PROHIBITED.

DESCRIPTION
**5' X 3' MODULAR
EQUIPMENT PLATFORM BASE**

CPD NO.		DRAWN BY CEK 6/5/2023		ENG. APPROVAL	
CLASS 81	SUB 02	DRAWING USAGE CUSTOMER		CHECKED BY JET 6/5/2023	



A **valmont** COMPANY

Locations:
New York, NY
Atlanta, GA
Los Angeles, CA
Plymouth, IN
Salem, OR
Dallas, TX

Engineering
Support Team:
1-888-753-7446

PART NO.	MEP53
DWG. NO.	MEP53