

PARTS LIST						
ITEM	QTY	PART NO.	PART DESCRIPTION	LENGTH	UNIT WT.	NET WT.
1	1	X-MEP46	4' X 6' MODULAR EQUIPMENT RACK BASE		289.22	289.22
2	2	X-MAW	MODULAR EQUIPMENT PLATFORM ACCESS WELDMENT		53.54	107.07
3	2	X-MSWS	WELDED STEP FOR 1 LEVEL MODULAR STEP		52.77	105.53
4	2	X-MSTEP	STAIR WELDMENT FOR MODULAR EQUIPMENT PLATFORM		37.92	75.85
5	4	X-MSH2	MODULAR HANRAIL FOR TWO STAIRS		10.53	42.11
6	4	X-MSTEP2MR	MID RAIL FOR MSTEP2	35 1/4 in	10.14	40.58
7	2	X-MRAIL6	6' HANRAIL WELDMENT FOR MODULAR EQUIPMENT PLATFORM		102.43	204.87
8	4	X-MSHUP	HANRAIL WELDMENT		12.25	48.98
9	8	X-MSHSP	HANRAIL SPACER PIPE	1 in	0.10	0.80
10	8	X-MS2A	SIDE ANGLE FOR TWO STAIR ASSEMBLY	15 1/4 in	3.20	25.60
11	8	X-MTRC	MODULAR TOP RAIL CORNER SPLICE		1.25	10.03
12	8	X-MKPC	MODULAR KICKER PLATE CORNER SPLICE	4 in	1.66	13.25
13	4	X-MJCP	MJACK CONNECTION PLATE	5 3/8 in	5.49	21.98
14	4	X-JACK	5,000 LB. SIDE CRANK JACK		13.37	53.46
15	4	X-MJFP	MODULAR JACK FOOTPAD		14.35	57.38
16	4	G103	1" X 3" HEX BOLT (HDG.)	3 in	1.07	4.29
17	8	G1LW	1" LOCK WASHER		0.09	0.76
18	4	G1NUT	1" HDG HEAVY HEX NUT		0.47	1.88
19	8	A58234	5/8" x 2-3/4" HDG A325 HEX BOLT	2 3/4 in	0.36	2.85
20	58	G58134	5/8" x 1-3/4" HDG BOLT	1 3/4 in	0.27	15.60
21	34	G58FW	5/8" HDG USS FLATWASHER	1/8 in	0.07	2.40
22	66	G58LW	5/8" HDG LOCKWASHER		0.03	1.72
23	66	G58NUT	5/8" HDG HEAVY 2H HEX NUT		0.13	8.57
24	4	G3803	3/8" x 3" HDG HEX BOLT GR5		0.12	0.48
25	12	G38112	3/8" x 1-1/2" HDG HEX BOLT GR5		0.07	0.85
26	24	G38FW	3/8" HDG USS FLATWASHER		0.01	0.28
27	16	G38LW	3/8" HDG LOCKWASHER		0.01	0.11
28	16	G38NUT	3/8" HDG HEAVY 2H HEX NUT		0.03	0.54
					TOTAL WT. #	1137.05

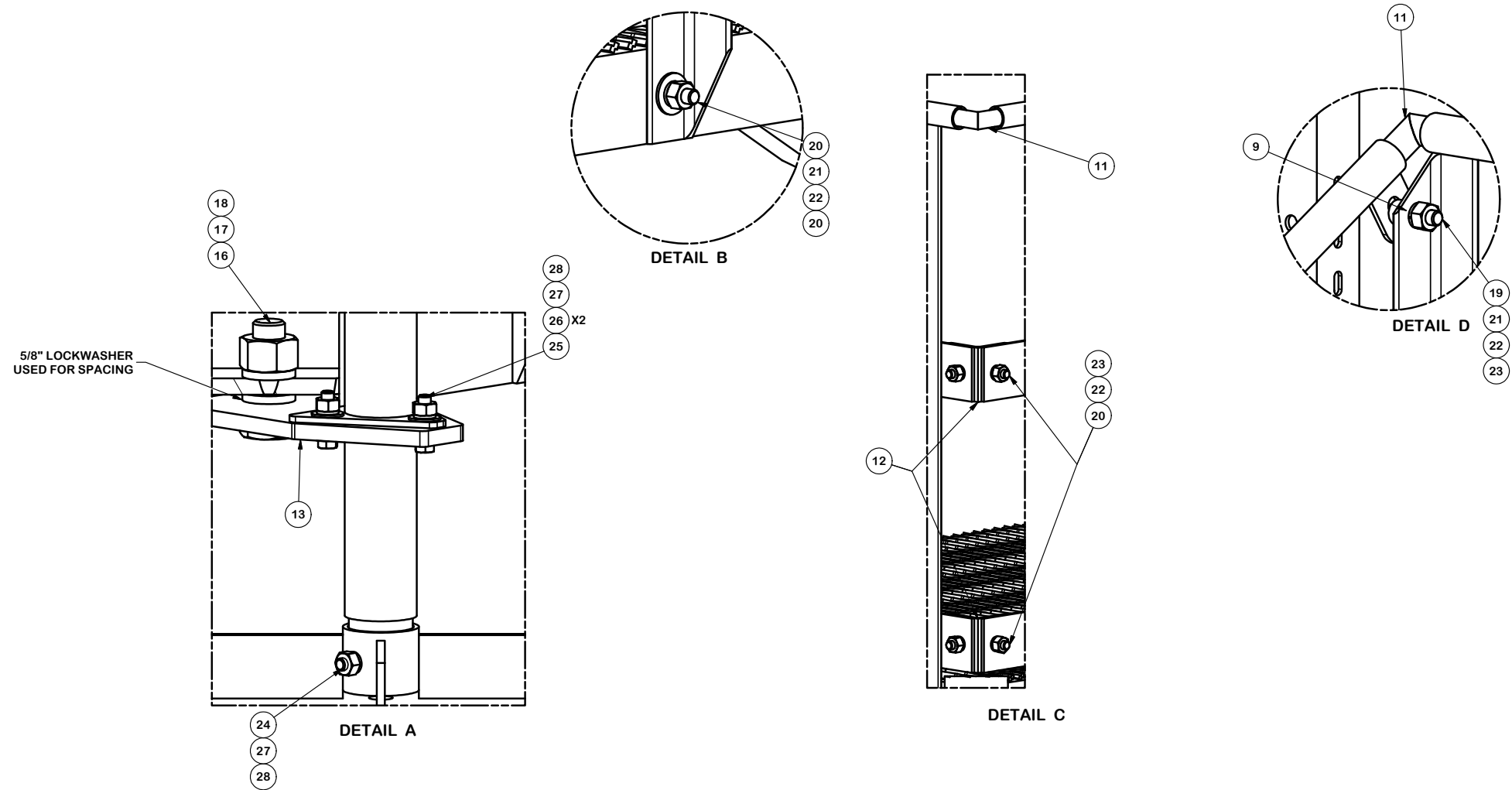
\*\* FOR DETAILS, SEE PAGE 2 \*\*

**TOLERANCE NOTES**  
 TOLERANCES ON DIMENSIONS, UNLESS OTHERWISE NOTED ARE:  
 SAWED, SHEARED AND GAS CUT EDGES ( $\pm 0.030"$ )  
 DRILLED AND GAS CUT HOLES ( $\pm 0.030"$ ) - NO CONING OF HOLES  
 LASER CUT EDGES AND HOLES ( $\pm 0.010"$ ) - NO CONING OF HOLES  
 BENDS ARE  $\pm 1/2$  DEGREE  
 ALL OTHER MACHINING ( $\pm 0.030"$ )  
 ALL OTHER ASSEMBLY ( $\pm 0.060"$ )

PROPRIETARY NOTE:  
 THE DATA AND TECHNIQUES CONTAINED IN THIS DRAWING ARE PROPRIETARY INFORMATION OF VALMONT INDUSTRIES AND CONSIDERED A TRADE SECRET. ANY USE OR DISCLOSURE WITHOUT THE CONSENT OF VALMONT INDUSTRIES IS STRICTLY PROHIBITED.

DESCRIPTION		4' X 6' MODLAR STEP OVER WITH JACK LEGS, HANRAIL AND 2 STEPS	
CPD NO.	DRAWN BY	ENG. APPROVAL	
	CEK	8/1/2016	
CLASS	SUB	DRAWING USAGE	CHECKED BY
81	02	CUSTOMER	

 A valmont COMPANY	Locations: New York, NY Atlanta, GA Los Angeles, CA Plymouth, IN Salem, OR Dallas, TX		
	Engineering Support Team: 1-888-753-7446		
PART NO.	M5046-6JH20S2	PAGE	1 OF 3
DWG. NO.	M5046-6JH20S2		




**TOLERANCE NOTES**

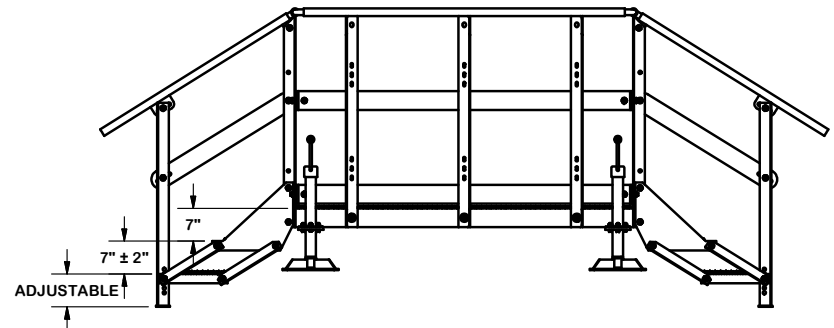
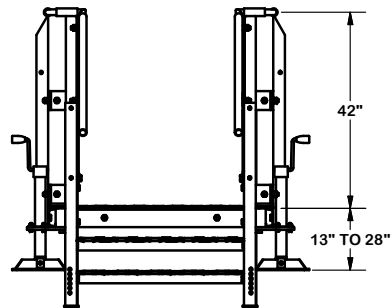
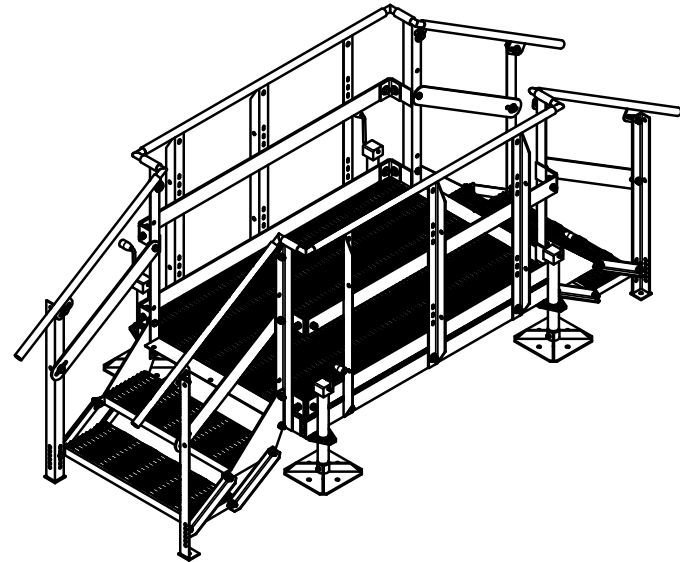
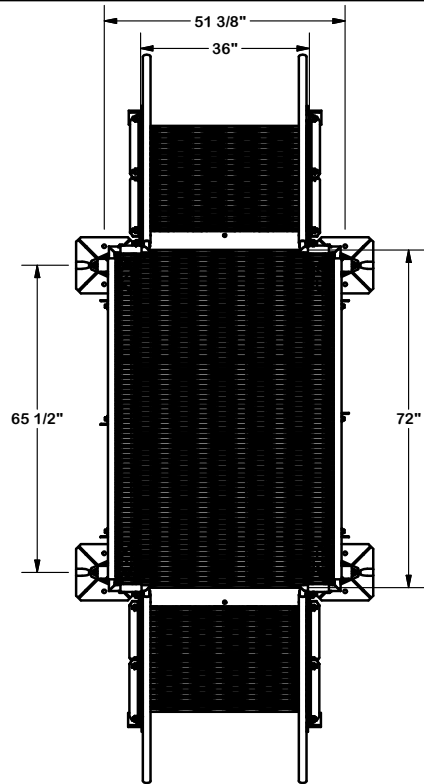
TOLERANCES ON DIMENSIONS, UNLESS OTHERWISE NOTED ARE:  
 SAWED, SHEARED AND GAS CUT EDGES ( $\pm 0.030"$ )  
 DRILLED AND GAS CUT HOLES ( $\pm 0.030"$ ) - NO CONING OF HOLES  
 LASER CUT EDGES AND HOLES ( $\pm 0.010"$ ) - NO CONING OF HOLES  
 BENDS ARE  $\pm 1/2$  DEGREE  
 ALL OTHER MACHINING ( $\pm 0.030"$ )  
 ALL OTHER ASSEMBLY ( $\pm 0.060"$ )

PROPRIETARY NOTE:  
 THE DATA AND TECHNIQUES CONTAINED IN THIS DRAWING ARE PROPRIETARY INFORMATION OF VALMONT INDUSTRIES AND CONSIDERED A TRADE SECRET. ANY USE OR DISCLOSURE WITHOUT THE CONSENT OF VALMONT INDUSTRIES IS STRICTLY PROHIBITED.

DESCRIPTION  
 4' X 6' MODLAR STEP OVER  
 WITH JACK LEGS, HANDRAIL AND 2 STEPS

CPD NO.	DRAWN BY CEK	8/1/2016	ENG. APPROVAL
CLASS 81	SUB 02	DRAWING USAGE CUSTOMER	CHECKED BY

 <b>A valmont COMPANY</b>	Engineering Support Team: 1-888-753-7446	Locations: New York, NY Atlanta, GA Los Angeles, CA Plymouth, IN Salem, OR Dallas, TX
	PART NO. <b>MSO46-6JH20S2</b>	PAGE 2 OF 3
DWG. NO. <b>MSO46-6JH20S2</b>		



**TOLERANCE NOTES**

**TOLERANCES ON DIMENSIONS, UNLESS OTHERWISE NOTED ARE:**  
**SAWED, SHEARED AND GAS CUT EDGES ( $\pm 0.030"$ )**  
**DRILLED AND GAS CUT HOLES ( $\pm 0.030"$ ) - NO CONING OF HOLES**  
**LASER CUT EDGES AND HOLES ( $\pm 0.010"$ ) - NO CONING OF HOLES**  
**BENDS ARE  $\pm 1/2$  DEGREE**  
**ALL OTHER MACHINING ( $\pm 0.030"$ )**  
**ALL OTHER ASSEMBLY ( $\pm 0.060"$ )**

**PROPRIETARY NOTE:**  
 THE DATA AND TECHNIQUES CONTAINED IN THIS DRAWING ARE PROPRIETARY INFORMATION OF VALMONT INDUSTRIES AND CONSIDERED A TRADE SECRET. ANY USE OR DISCLOSURE WITHOUT THE CONSENT OF VALMONT INDUSTRIES IS STRICTLY PROHIBITED.

**DESCRIPTION**  
 4' X 6' MODLAR STEP OVER  
 WITH JACK LEGS, HANDRAIL AND 2 STEPS



Engineering  
 Support Team:  
 1-888-753-7446

Locations:  
 New York, NY  
 Atlanta, GA  
 Los Angeles, CA  
 Plymouth, IN  
 Salem, OR  
 Dallas, TX

CPD NO.	DRAWN BY	ENG. APPROVAL
81	CEK 8/1/2016	
CLASS	DRAWING USAGE	CHECKED BY
81	CUSTOMER	

PART NO.	MSO46-6JH20S2
DWG. NO.	MSO46-6JH20S2