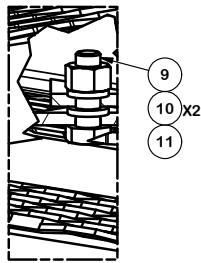
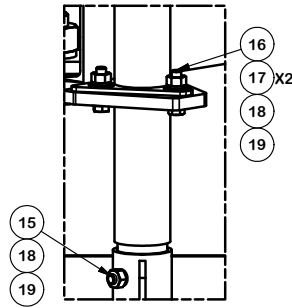


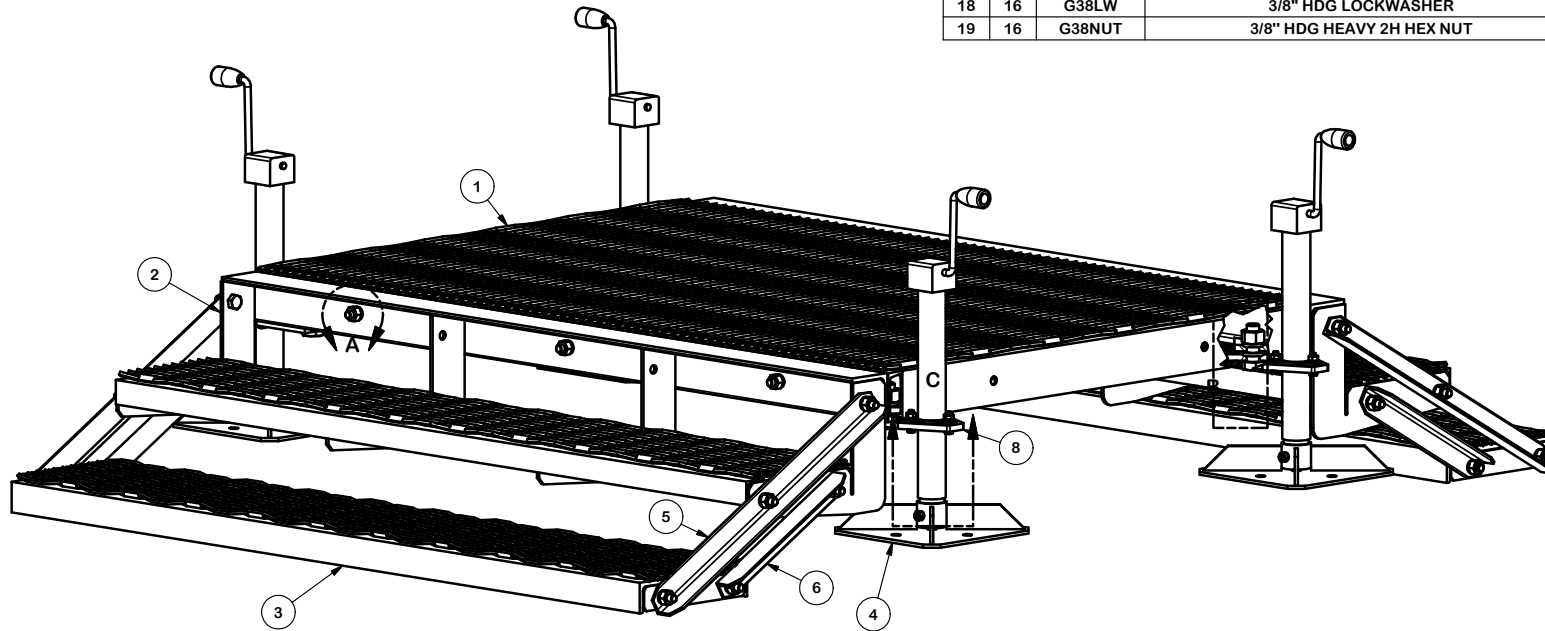
DETAIL A  
TYPICAL ALL CONNECTIONS



DETAIL B



DETAIL C



PARTS LIST

ITEM	QTY	PART NO.	PART DESCRIPTION	LENGTH	UNIT WT.	NET WT.
1	1	X-MEP46	4' X 6' MODULAR EQUIPMENT RACK BASE		289.22	289.22
2	2	X-MS1FE6	6" MODULAR STEP FOR FIRE EGRESS		147.89	295.78
3	2	X-MFESTEP	STAIR WELDMENT FOR FIRE EGRESS STAIR ASSEMBLY		107.14	214.28
4	4	X-MJFP	MODULAR JACK FOOTPAD		14.35	57.38
5	4	X-MS3A	SIDE ANGLE FOR THREE STAIR ASSEMBLY	28 1/2 in	6.06	24.24
6	4	X-MS2A	SIDE ANGLE FOR TWO STAIR ASSEMBLY	15 1/4 in	3.20	12.80
7	4	X-JACK	5,000 LB. SIDE CRANK JACK		13.37	53.46
8	4	X-MJCP	MJACK CONNECTION PLATE	5 3/8 in	5.49	21.98
9	4	G103	1" X 3" HEX BOLT (HDG.)	3 in	1.07	4.29
10	8	G1LW	1" LOCK WASHER		0.09	0.76
11	4	G1NUT	1" HDG HEAVY HEX NUT		0.47	1.88
12	26	G58134	5/8" x 1-3/4" HDG BOLT	1 3/4 in	0.27	6.99
13	26	G58LW	5/8" HDG LOCKWASHER		0.03	0.68
14	26	G58NUT	5/8" HDG HEAVY 2H HEX NUT		0.13	3.38
15	4	G3803	3/8" x 3" HDG HEX BOLT GR5		0.12	0.48
16	12	G38112	3/8" x 1-1/2" HDG HEX BOLT GR5		0.07	0.85
17	24	G38FW	3/8" HDG USS FLATWASHER		0.01	0.28
18	16	G38LW	3/8" HDG LOCKWASHER		0.01	0.11
19	16	G38NUT	3/8" HDG HEAVY 2H HEX NUT		0.03	0.54
					TOTAL WT. #	989.38

TOLERANCE NOTES

TOLERANCES ON DIMENSIONS, UNLESS OTHERWISE NOTED ARE:  
 SAWED, SHEARED AND GAS CUT EDGES ( $\pm 0.030"$ )  
 DRILLED AND GAS CUT HOLES ( $\pm 0.030"$ ) - NO CONING OF HOLES  
 LASER CUT EDGES AND HOLES ( $\pm 0.010"$ ) - NO CONING OF HOLES  
 BENDS ARE  $\pm 1/2$  DEGREE  
 ALL OTHER MACHINING ( $\pm 0.030"$ )  
 ALL OTHER ASSEMBLY ( $\pm 0.060"$ )

PROPRIETARY NOTE:  
 THE DATA AND TECHNIQUES CONTAINED IN THIS DRAWING ARE PROPRIETARY INFORMATION OF VALMONT INDUSTRIES AND CONSIDERED A TRADE SECRET. ANY USE OR DISCLOSURE WITHOUT THE CONSENT OF VALMONT INDUSTRIES IS STRICTLY PROHIBITED.

DESCRIPTION

4' X 6' MODULAR STEP OVER  
 WITH JACK LEGS AND 2 STEPS

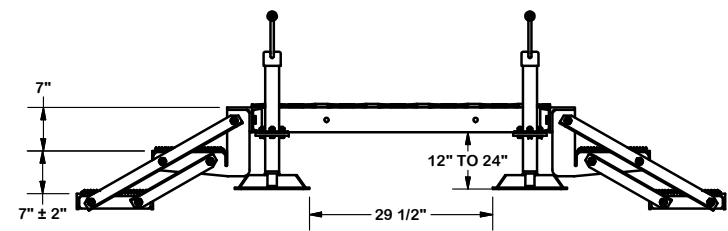
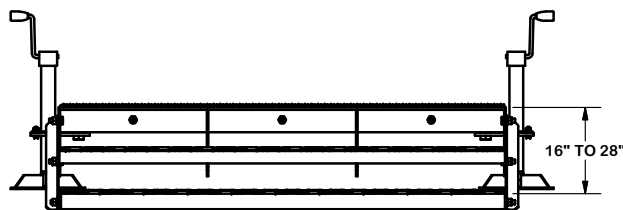
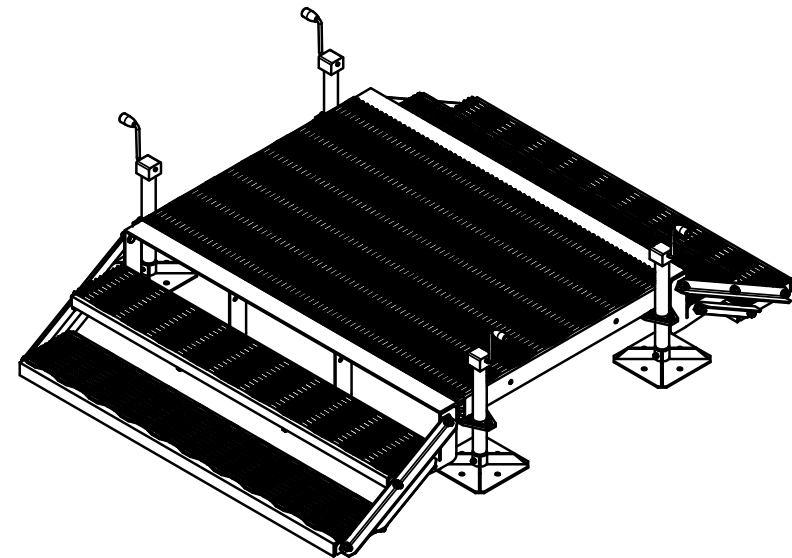
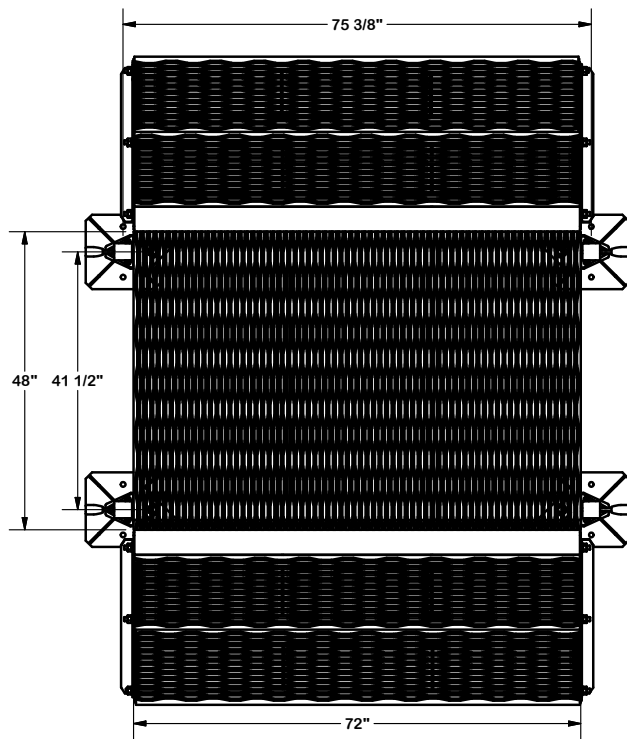
CPD NO.	DRAWN BY	ENG. APPROVAL
CLASS	DRAWING USAGE	CHECKED BY
81	02	CUSTOMER
		BMC 12/15/2016



Engineering Support Team:  
 1-888-753-7446

Locations:  
 New York, NY  
 Atlanta, GA  
 Los Angeles, CA  
 Plymouth, IN  
 Salem, OR  
 Dallas, TX

PART NO.	MSO46-6JLS2	PAGE
DWG. NO.	MSO46-6JLS2	1 OF 2



**TOLERANCE NOTES**

**TOLERANCES ON DIMENSIONS, UNLESS OTHERWISE NOTED ARE:  
 SAWED, SHEARED AND GAS CUT EDGES ( $\pm 0.030$ " )  
 DRILLED AND GAS CUT HOLES ( $\pm 0.030$ " ) - NO CONING OF HOLES  
 LASER CUT EDGES AND HOLES ( $\pm 0.010$ " ) - NO CONING OF HOLES  
 BENDS ARE  $\pm 1/2$  DEGREE  
 ALL OTHER MACHINING ( $\pm 0.030$ " )  
 ALL OTHER ASSEMBLY ( $\pm 0.060$ " )**

PROPRIETARY NOTE:  
 THE DATA AND TECHNIQUES CONTAINED IN THIS DRAWING ARE PROPRIETARY INFORMATION OF VALMONT  
 INDUSTRIES AND CONSIDERED A TRADE SECRET. ANY USE OR DISCLOSURE WITHOUT THE CONSENT OF  
 VALMONT INDUSTRIES IS STRICTLY PROHIBITED.

DESCRIPTION  
**4' X 6' MODULAR STEP OVER  
 WITH JACK LEGS AND 2 STEPS**

**SITE PRO 1**  
 A valmont COMPANY  
 Engineering Support Team:  
 1-888-753-7446  
 Locations:  
 New York, NY  
 Atlanta, GA  
 Los Angeles, CA  
 Plymouth, IN  
 Salem, OR  
 Dallas, TX

CPD NO.	DRAWN BY CEK 12/14/2016	ENG. APPROVAL
CLASS 81	SUB 02	DRAWING USAGE CUSTOMER
	CHECKED BY BMC 12/15/2016	

PART NO.	MSO46-6JLS2	PAGE 2 OF 2
DWG. NO.	MSO46-6JLS2	