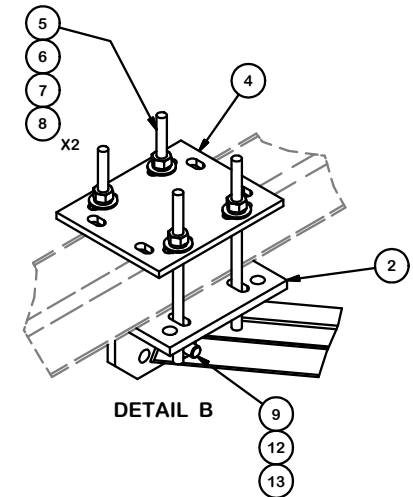
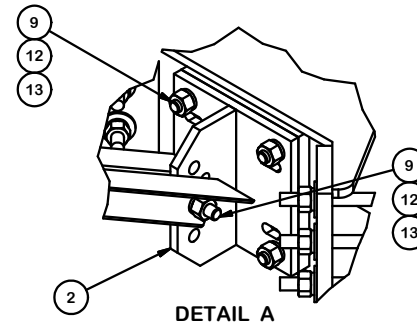


PARTS LIST						
ITEM	QTY	PART NO.	PART DESCRIPTION	LENGTH	UNIT WT.	NET WT.
1	4	X-162290	QUAD BRACKET		54.48	217.94
2	8	X-TBW	T-BRACKET WELDMENT		13.60	108.80
3	8	X-253993	PLATFORM REINFORCEMENT KIT ANGLE	52 25/32 in	14.33	114.65
4	4	SCX4	CROSSOVER PLATE	8 1/2 in	6.02	24.09
5	16	G12R-10	1/2" x 10" GALV. THREADED ROD		0.59	9.37
6	32	G12FW	1/2" HDG USS FLATWASHER	3/32 in	0.03	1.09
7	32	G12LW	1/2" HDG LOCKWASHER	1/8 in	0.01	0.44
8	32	G12NUT	1/2" HDG HEAVY 2H HEX NUT		0.07	2.29
9	24	A582114	5/8" x 2-1/4" HDG A325 HEX BOLT	2 1/4 in	0.31	7.50
10	12	G58R-24	5/8" x 24" THREADED ROD (HDG.)		2.09	25.09
10	12	G58R-48	5/8" x 48" THREADED ROD (HDG.)		4.18	50.18
11	24	G58FW	5/8" HDG USS FLATWASHER	1/8 in	0.07	1.69
12	48	G58LW	5/8" HDG LOCKWASHER		0.03	1.25
13	48	G58NUT	5/8" HDG HEAVY 2H HEX NUT		0.13	6.23
					TOTAL WT. #	604.39



TOLERANCE NOTES

TOLERANCES ON DIMENSIONS, UNLESS OTHERWISE NOTED ARE:
 SAWED, SHEARED AND GAS CUT EDGES ($\pm 0.030"$)
 DRILLED AND GAS CUT HOLES ($\pm 0.030"$) - NO CONING OF HOLES
 LASER CUT EDGES AND HOLES ($\pm 0.010"$) - NO CONING OF HOLES
 BENDS ARE $\pm 1/2$ DEGREE
 ALL OTHER MACHINING ($\pm 0.030"$)
 ALL OTHER ASSEMBLY ($\pm 0.060"$)

PROPRIETARY NOTE:
 THE DATA AND TECHNIQUES CONTAINED IN THIS DRAWING ARE PROPRIETARY INFORMATION OF VALMONT INDUSTRIES AND CONSIDERED A TRADE SECRET. ANY USE OR DISCLOSURE WITHOUT THE CONSENT OF VALMONT INDUSTRIES IS STRICTLY PROHIBITED.

DESCRIPTION
 PLATFORM REINFORCEMENT
 ON A 12" TO 60" POLE
 4' 6" ANGLE

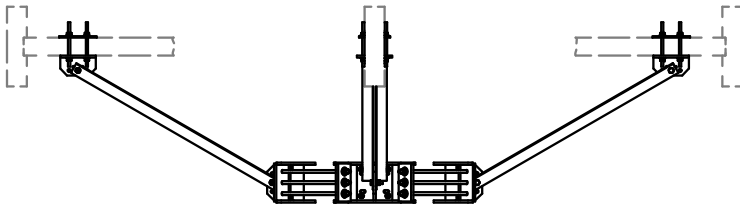
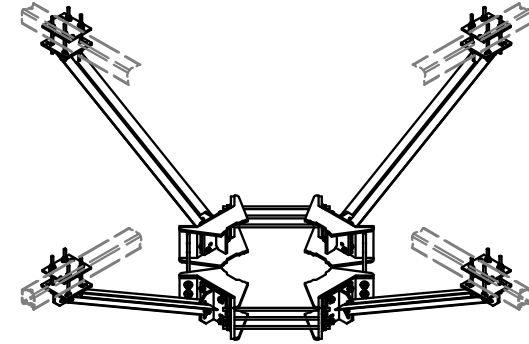
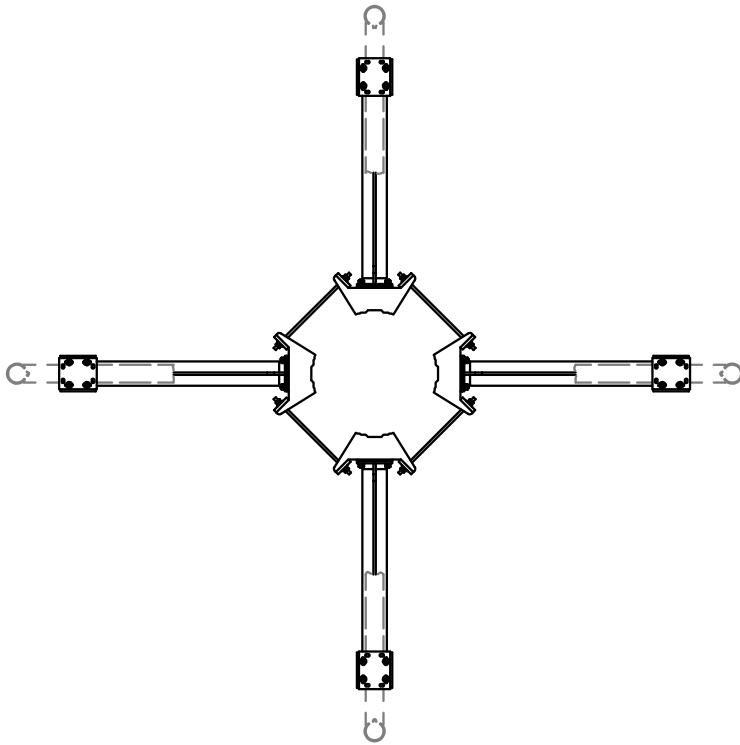
SITE PRO 1
 Engineering Support Team:
 1-888-753-7446

Locations:
 New York, NY
 Atlanta, GA
 Los Angeles, CA
 Plymouth, IN
 Salem, OR
 Dallas, TX

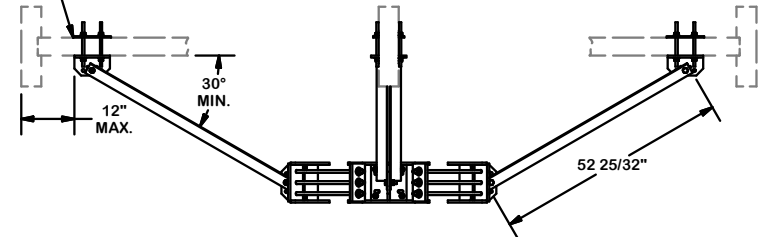
REV	DESCRIPTION OF REVISIONS	CPD	BY	DATE
C	CHANGED X-253992 TO X-TBW		CE	9/19/2018
B	CHANGED G12065 TO G12R-10 AND UPDATED HARDWARE		MS	12/18/2015
A	CHANGED ALL 5/8" BOLTS TO A582114		CEK	10/1/2015

CPD NO.	DRAWN BY	ENG. APPROVAL
	CEK 1/22/2015	
CLASS	SUB	DRAWING USAGE
81	01	CUSTOMER
CHECKED BY	DATE	
BMC	1/6/2016	

PART NO.	DWG. NO.
PQ-1245	PQ-1245



FITS UP TO 4" ROUND OR SQUARE TUBES



REV	DESCRIPTION OF REVISIONS	CPD	BY	DATE
C	CHANGED X-253992 TO X-TBW		CE	9/19/2018
B	CHANGED G12065 TO G12R-10 AND UPDATED HARDWARE		MS	12/18/2015
A	CHANGED ALL 5/8" BOLTS TO A582114		CEK	10/1/2015
REVISION HISTORY				

TOLERANCE NOTES
 TOLERANCES ON DIMENSIONS, UNLESS OTHERWISE NOTED ARE:
 SAWED, SHEARED AND GAS CUT EDGES ($\pm 0.030"$)
 DRILLED AND GAS CUT HOLES ($\pm 0.030"$) - NO CONING OF HOLES
 LASER CUT EDGES AND HOLES ($\pm 0.010"$) - NO CONING OF HOLES
 BENDS ARE $\pm 1/2$ DEGREE
 ALL OTHER MACHINING ($\pm 0.030"$)
 ALL OTHER ASSEMBLY ($\pm 0.060"$)

PROPRIETARY NOTE:
 THE DATA AND TECHNIQUES CONTAINED IN THIS DRAWING ARE PROPRIETARY INFORMATION OF VALMONT INDUSTRIES AND CONSIDERED A TRADE SECRET. ANY USE OR DISCLOSURE WITHOUT THE CONSENT OF VALMONT INDUSTRIES IS STRICTLY PROHIBITED.

DESCRIPTION		DRAWING USAGE	
PLATFORM REINFORCEMENT ON A 12" TO 60" POLE 4' 6" ANGLE		CUSTOMER	
CPD NO.	DRAWN BY	ENG. APPROVAL	CHECKED BY
	CEK 1/22/2015		BMC 1/6/2016
CLASS	SUB		
81	01		

 A valmont COMPANY	Engineering Support Team: 1-888-753-7446	Locations: New York, NY Atlanta, GA Los Angeles, CA Plymouth, IN Salem, OR Dallas, TX
	PART NO. PQ-1245 DWG. NO. PQ-1245	PAGE 2 OF 2