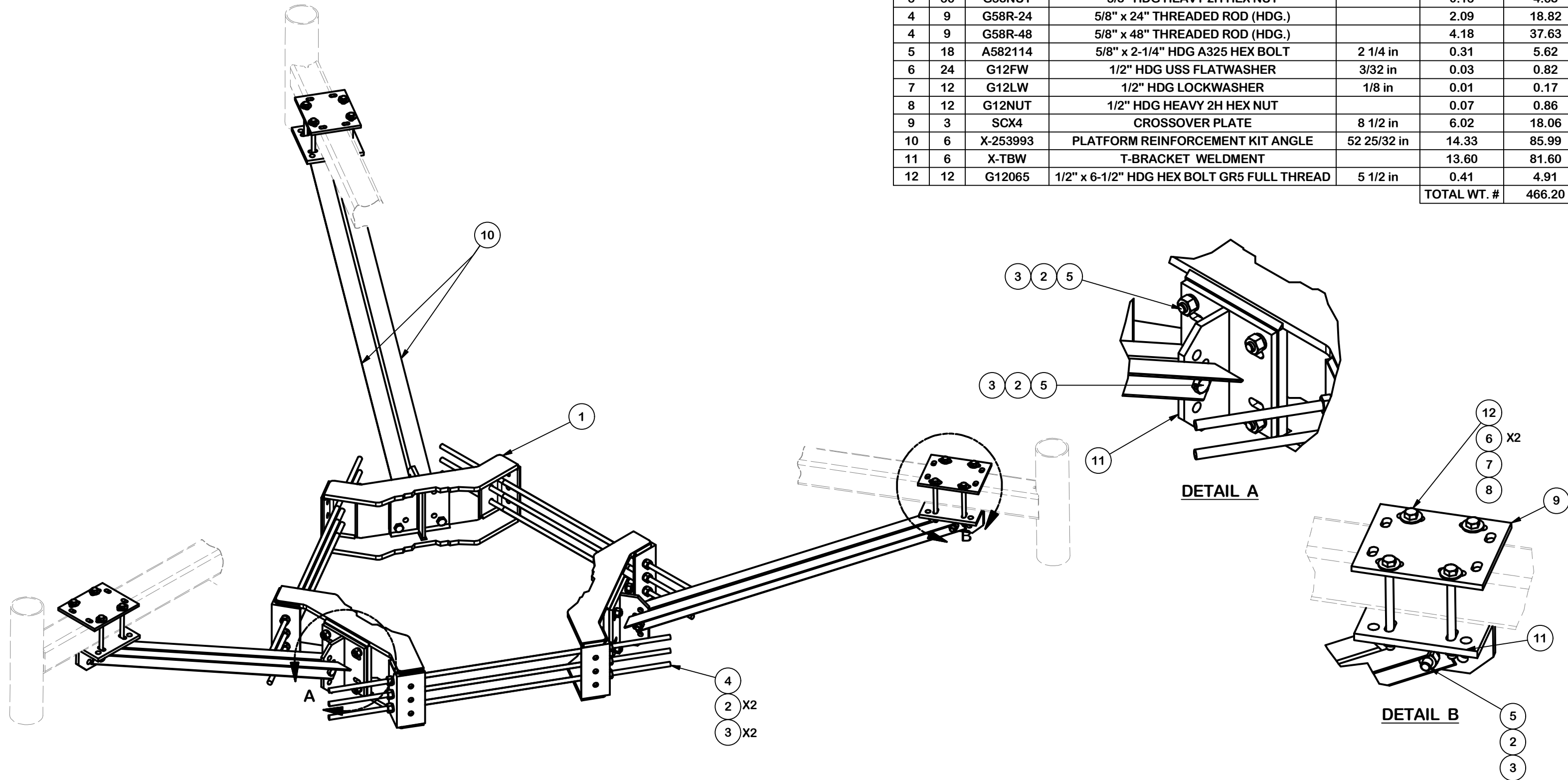


PARTS LIST						
ITEM	QTY	PART NO.	PART DESCRIPTION	LENGTH	UNIT WT.	NET WT.
1	3	X-LWRM	RING MOUNT WELDMENT		68.81	206.42
2	36	G58LW	5/8" HDG LOCKWASHER		0.03	0.94
3	36	G58NUT	5/8" HDG HEAVY 2H HEX NUT		0.13	4.68
4	9	G58R-24	5/8" x 24" THREADED ROD (HDG.)		2.09	18.82
4	9	G58R-48	5/8" x 48" THREADED ROD (HDG.)		4.18	37.63
5	18	A582114	5/8" x 2-1/4" HDG A325 HEX BOLT	2 1/4 in	0.31	5.62
6	24	G12FW	1/2" HDG USS FLATWASHER	3/32 in	0.03	0.82
7	12	G12LW	1/2" HDG LOCKWASHER	1/8 in	0.01	0.17
8	12	G12NUT	1/2" HDG HEAVY 2H HEX NUT		0.07	0.86
9	3	SCX4	CROSSOVER PLATE	8 1/2 in	6.02	18.06
10	6	X-253993	PLATFORM REINFORCEMENT KIT ANGLE	52 25/32 in	14.33	85.99
11	6	X-TBW	T-BRACKET WELDMENT		13.60	81.60
12	12	G12065	1/2" x 6-1/2" HDG HEX BOLT GR5 FULL THREAD	5 1/2 in	0.41	4.91
					TOTAL WT. #	466.20



REV	DESCRIPTION OF REVISIONS	CPD	BY	DATE
B	CHANGED X-253992 TO X-TBW		CEK	9/19/2018
A	CHANGED ALL 5/8" BOLTS TO A582114	4488	CEK	10/1/2015

**REVISION HISTORY**

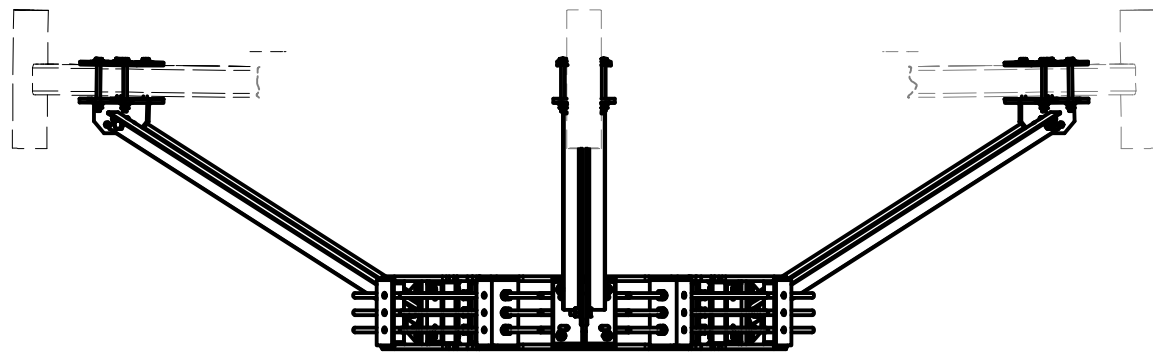
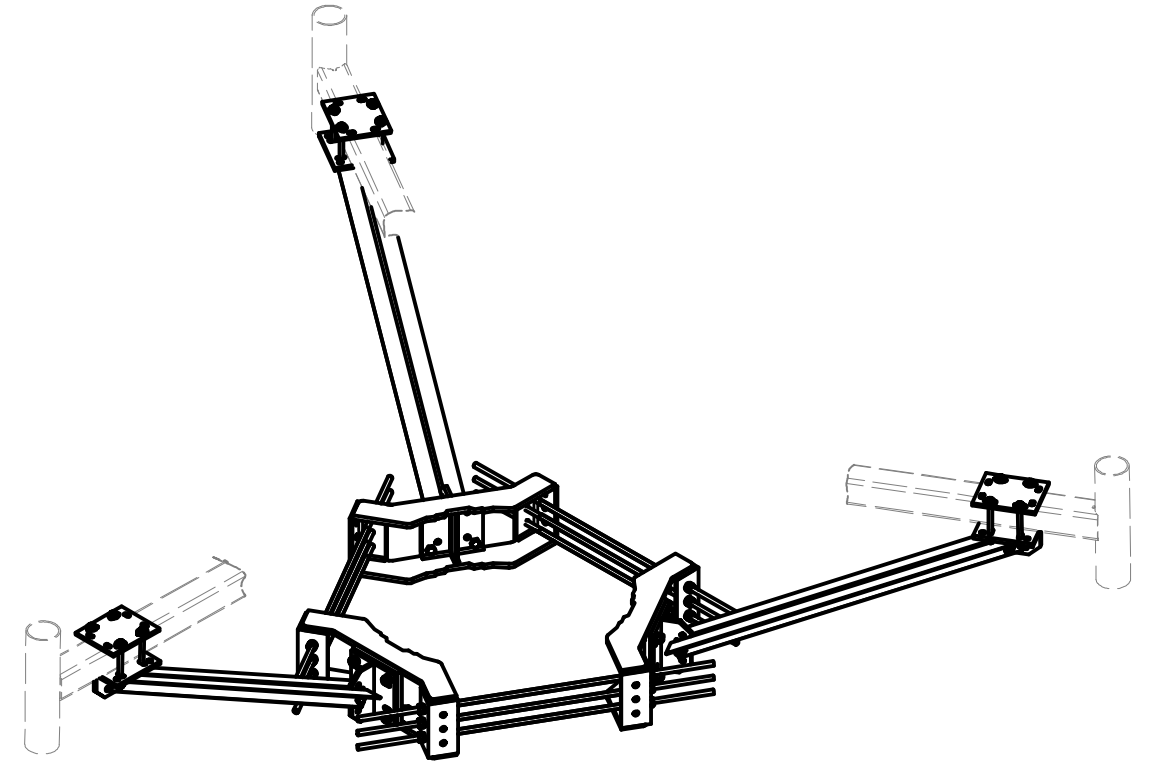
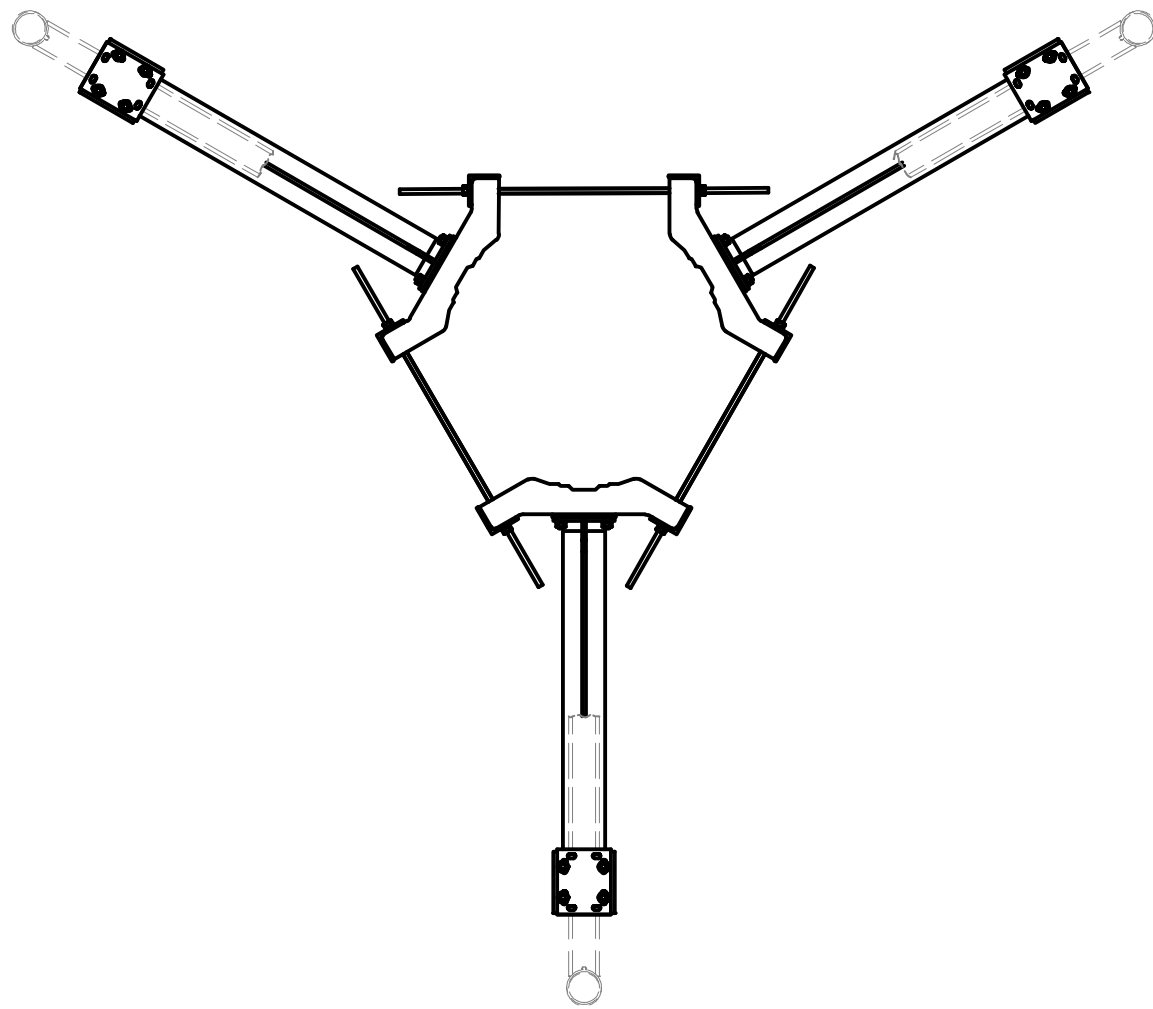
**TOLERANCE NOTES**

TOLERANCES ON DIMENSIONS, UNLESS OTHERWISE NOTED ARE:  
 SAWED, SHEARED AND GAS CUT EDGES ( $\pm 0.030"$ )  
 DRILLED AND GAS CUT HOLES ( $\pm 0.030"$ ) - NO CONING OF HOLES  
 LASER CUT EDGES AND HOLES ( $\pm 0.010"$ ) - NO CONING OF HOLES  
 BENDS ARE  $\pm 1/2$  DEGREE  
 ALL OTHER MACHINING ( $\pm 0.030"$ )  
 ALL OTHER ASSEMBLY ( $\pm 0.060"$ )

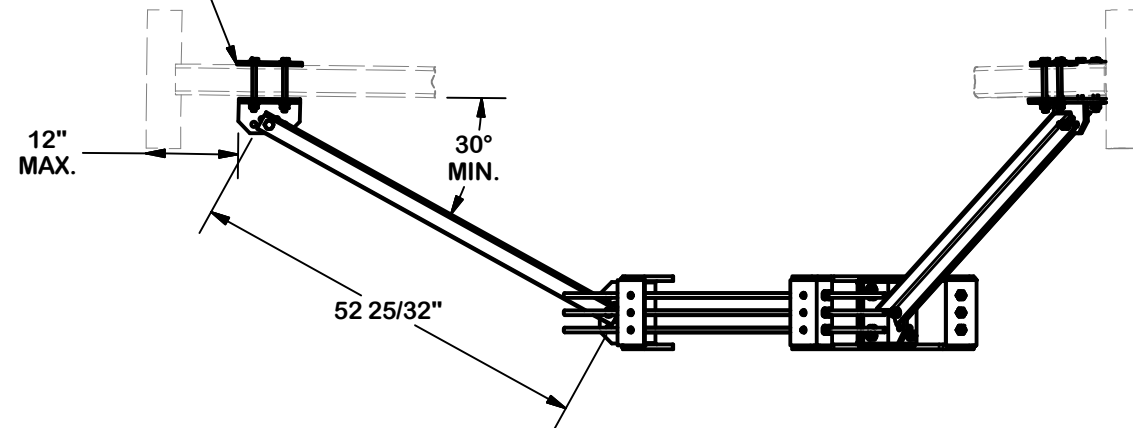
PROPRIETARY NOTE:  
 THE DATA AND TECHNIQUES CONTAINED IN THIS DRAWING ARE PROPRIETARY INFORMATION OF VALMONT INDUSTRIES AND CONSIDERED A TRADE SECRET. ANY USE OR DISCLOSURE WITHOUT THE CONSENT OF VALMONT INDUSTRIES IS STRICTLY PROHIBITED.

DESCRIPTION			
PLATFORM REINFORCEMENT ON A 12" TO 45" POLE 4' 6" ANGLE			
CPD NO.	DRAWN BY	ENG. APPROVAL	
4488	CEK 4/11/2014		
CLASS	SUB	DRAWING USAGE	CHECKED BY
81	01	CUSTOMER	BMC 1/18/2016

 A valmont COMPANY	Engineering Support Team: 1-888-753-7446	Locations: New York, NY Atlanta, GA Los Angeles, CA Plymouth, IN Salem, OR Dallas, TX
	PART NO.	PRK-1245
DWG. NO.	PRK-1245	



FITS UP TO 4" ROUND  
OR SQUARE TUBES



**TOLERANCE NOTES**

TOLERANCES ON DIMENSIONS, UNLESS OTHERWISE NOTED ARE:  
 SAWED, SHEARED AND GAS CUT EDGES ( $\pm 0.030$ "")  
 DRILLED AND GAS CUT HOLES ( $\pm 0.030$ "") - NO CONING OF HOLES  
 LASER CUT EDGES AND HOLES ( $\pm 0.010$ "") - NO CONING OF HOLES  
 BENDS ARE  $\pm 1/2$  DEGREE  
 ALL OTHER MACHINING ( $\pm 0.030$ "")  
 ALL OTHER ASSEMBLY ( $\pm 0.060$ "")

PROPRIETARY NOTE:  
 THE DATA AND TECHNIQUES CONTAINED IN THIS DRAWING ARE PROPRIETARY INFORMATION OF VALMONT INDUSTRIES AND CONSIDERED A TRADE SECRET. ANY USE OR DISCLOSURE WITHOUT THE CONSENT OF VALMONT INDUSTRIES IS STRICTLY PROHIBITED.

DESCRIPTION  
**PLATFORM REINFORCEMENT  
 ON A 12" TO 45" POLE  
 4' 6" ANGLE**

CPD NO. <b>4488</b>	DRAWN BY <b>CEK 4/11/2014</b>	ENG. APPROVAL
CLASS <b>81</b>	SUB <b>01</b>	DRAWING USAGE <b>CUSTOMER</b>
CHECKED BY <b>BMC 1/18/2016</b>		

**SITE PRO 1**  
 A valmont COMPANY

Engineering Support Team:  
 1-888-753-7446

Locations:  
 New York, NY  
 Atlanta, GA  
 Los Angeles, CA  
 Plymouth, IN  
 Salem, OR  
 Dallas, TX

REV	DESCRIPTION OF REVISIONS	CPD	BY	DATE
B	CHANGED X-253992 TO X-TBW		CEK	9/19/2018
A	CHANGED ALL 5/8" BOLTS TO A582114	4488	CEK	10/1/2015

REVISION HISTORY

PART NO. <b>PRK-1245</b>	PAGE <b>2 OF 2</b>
DWG. NO. <b>PRK-1245</b>	