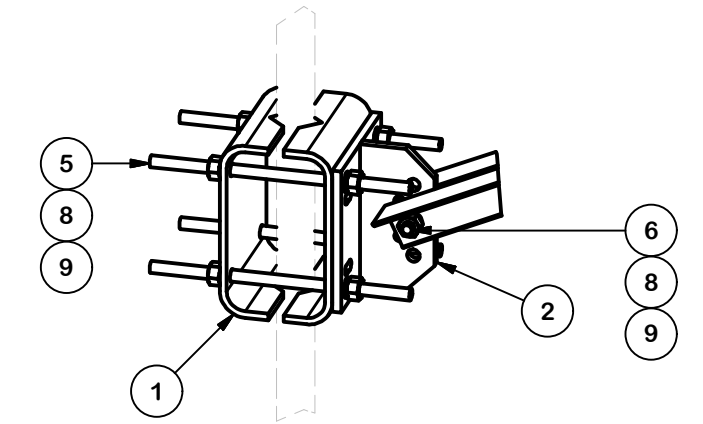
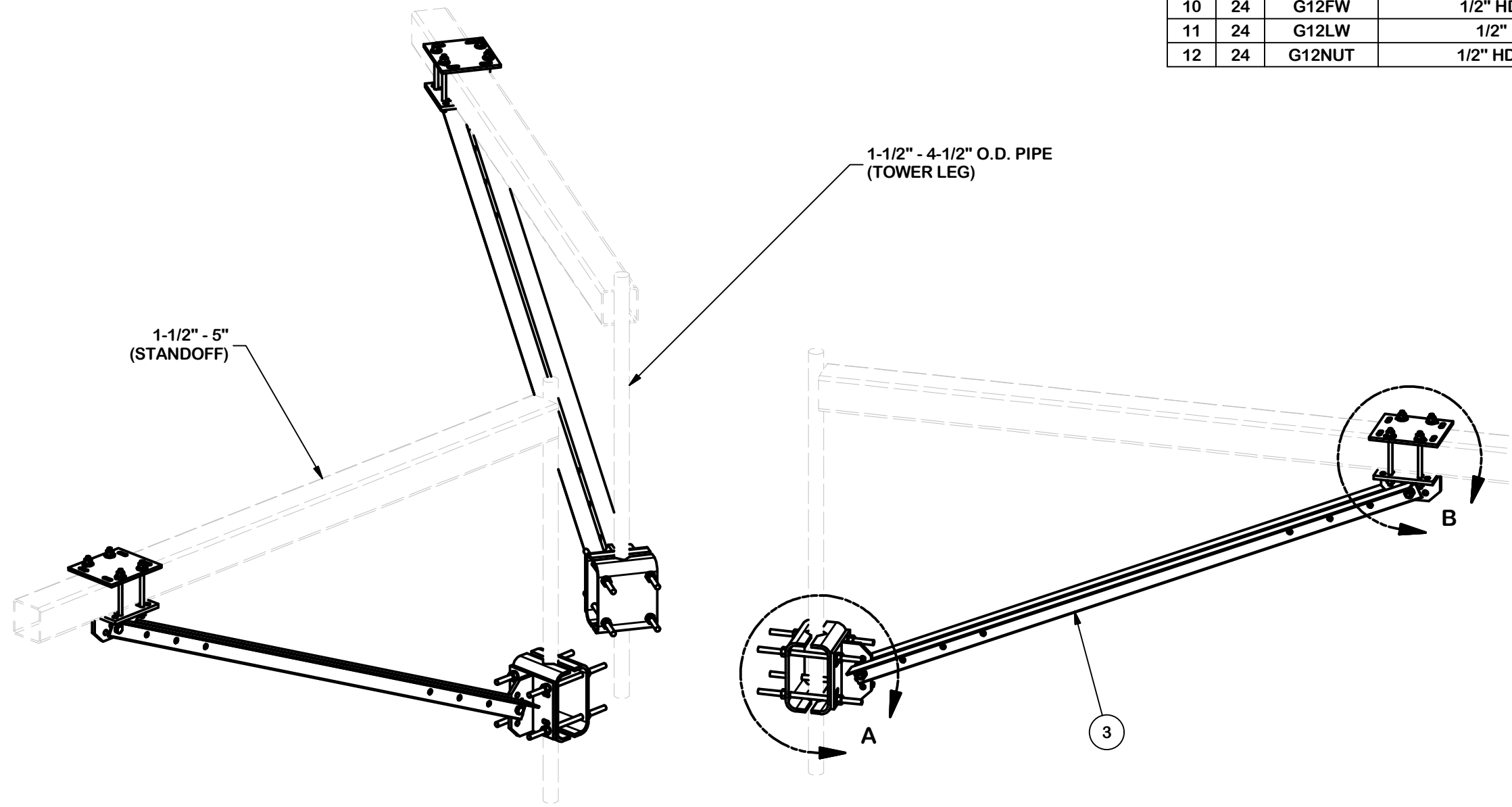
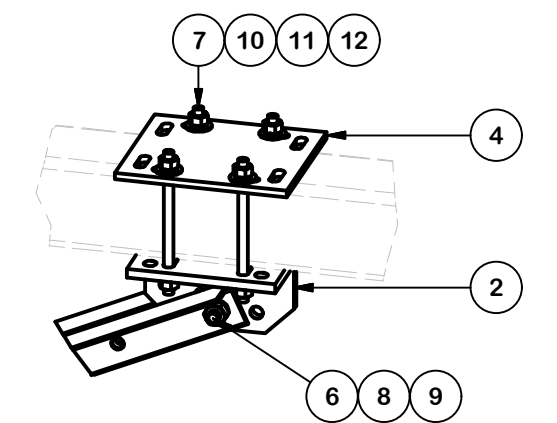


PARTS LIST						
ITEM	QTY	PART NO.	PART DESCRIPTION	LENGTH	UNIT WT.	NET WT.
1	6	X-214130	BENT PLATE V-CLAMP	12 5/8 in	11.43	68.58
2	6	X-TBW	T-BRACKET WELDMENT		13.60	81.60
3	6	X-254923	PLATFORM REINFORCEMENT KIT ANGLE	84 in	22.83	137.00
4	3	SCX3	CROSSOVER PLATE	9 1/4 in	7.19	21.57
5	12	G58R-14	5/8" x 14" THREADED ROD (HDG.)	14 in	0.40	4.79
6	6	A5802	5/8" x 2" HDG A325 HEX BOLT	2 in	0.27	1.63
7	12	G12R-8	1/2" x 8" THREADED ROD (HDG.)	8 in	0.40	4.79
8	30	G58LW	5/8" HDG LOCKWASHER		0.03	0.78
9	30	G58NUT	5/8" HDG HEAVY 2H HEX NUT		0.13	3.90
10	24	G12FW	1/2" HDG USS FLATWASHER	3/32 in	0.03	0.82
11	24	G12LW	1/2" HDG LOCKWASHER	1/8 in	0.01	0.33
12	24	G12NUT	1/2" HDG HEAVY 2H HEX NUT		0.07	1.72
TOTAL WT. #						337.91



DETAIL A



DETAIL B

TOLERANCE NOTES

TOLERANCES ON DIMENSIONS, UNLESS OTHERWISE NOTED ARE:
 SAWED, SHEARED AND GAS CUT EDGES ($\pm 0.030''$)
 DRILLED AND GAS CUT HOLES ($\pm 0.030''$) - NO CONING OF HOLES
 LASER CUT EDGES AND HOLES ($\pm 0.010''$) - NO CONING OF HOLES
 BENDS ARE $\pm 1/2$ DEGREE
 ALL OTHER MACHINING ($\pm 0.030''$)
 ALL OTHER ASSEMBLY ($\pm 0.060''$)

PROPRIETARY NOTE:
 THE DATA AND TECHNIQUES CONTAINED IN THIS DRAWING ARE PROPRIETARY INFORMATION OF VALMONT INDUSTRIES AND CONSIDERED A TRADE SECRET. ANY USE OR DISCLOSURE WITHOUT THE CONSENT OF VALMONT INDUSTRIES IS STRICTLY PROHIBITED.

DESCRIPTION
TOWER PLATFORM REINFORCEMENT KIT

CPD NO.	DRAWN BY CSL3 5/12/2017	ENG. APPROVAL
CLASS 81	SUB 02	DRAWING USAGE SHOP
CHECKED BY		

SITE PRO 1
 A valmont COMPANY

Engineering Support Team:
 1-888-753-7446

Locations:
 New York, NY
 Atlanta, GA
 Los Angeles, CA
 Plymouth, IN
 Salem, OR
 Dallas, TX

PART NO. PRK-FMA	PAGE 1 OF 1
DWG. NO. PRK-FMA	