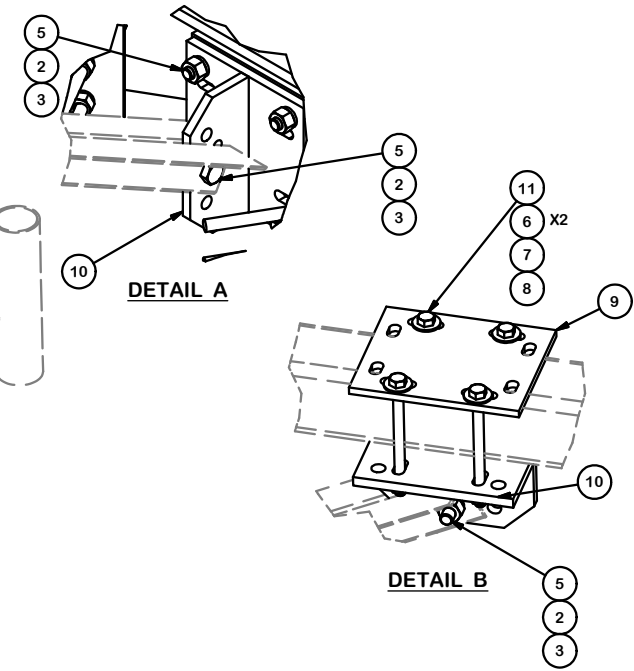


PARTS LIST						
ITEM	QTY	PART NO.	PART DESCRIPTION	LENGTH	UNIT WT.	NET WT.
1	3	X-LWRM	RING MOUNT WELDMENT		68.81	206.42
2	36	G58LW	5/8" HDG LOCKWASHER		0.03	0.94
3	36	G58NUT	5/8" HDG HEAVY 2H HEX NUT		0.13	4.68
4	9	G58R-24	5/8" x 24" THREADED ROD (HDG.)		2.09	18.82
4	9	G58R-48	5/8" x 48" THREADED ROD (HDG.)		4.18	37.63
5	18	A582114	5/8" x 2-1/4" HDG A325 HEX BOLT	2 1/4 in	0.31	5.62
6	24	G12FW	1/2" HDG USS FLATWASHER	3/32 in	0.03	0.82
7	12	G12LW	1/2" HDG LOCKWASHER	1/8 in	0.01	0.17
8	12	G12NUT	1/2" HDG HEAVY 2H HEX NUT		0.07	0.86
9	3	SCX4	CROSSOVER PLATE	8 1/2 in	6.02	18.06
10	6	X-TBW	T-BRACKET WELDMENT		13.60	81.60
11	12	G12065	1/2" x 6-1/2" HDG HEX BOLT GR5 FULL THREAD	5 1/2 in	0.41	4.91
TOTAL WT. #						380.21



REV	DESCRIPTION OF REVISIONS	CPD	BY	DATE
B	CHANGED X-253992 TO X-TBW		CEK	9/19/2018
A	CHANGED ALL 5/8" BOLTS TO A582114	4488	CEK	10/1/2015
REVISION HISTORY				

TOLERANCE NOTES
 TOLERANCES ON DIMENSIONS, UNLESS OTHERWISE NOTED ARE:
 SAWED, SHEARED AND GAS CUT EDGES ($\pm 0.030"$)
 DRILLED AND GAS CUT HOLES ($\pm 0.030"$) - NO CONING OF HOLES
 LASER CUT EDGES AND HOLES ($\pm 0.010"$) - NO CONING OF HOLES
 BENDS ARE $\pm 1/2$ DEGREE
 ALL OTHER MACHINING ($\pm 0.030"$)
 ALL OTHER ASSEMBLY ($\pm 0.060"$)

PROPRIETARY NOTE:
 THE DATA AND TECHNIQUES CONTAINED IN THIS DRAWING ARE PROPRIETARY INFORMATION OF VALMONT INDUSTRIES AND CONSIDERED A TRADE SECRET. ANY USE OR DISCLOSURE WITHOUT THE CONSENT OF VALMONT INDUSTRIES IS STRICTLY PROHIBITED.

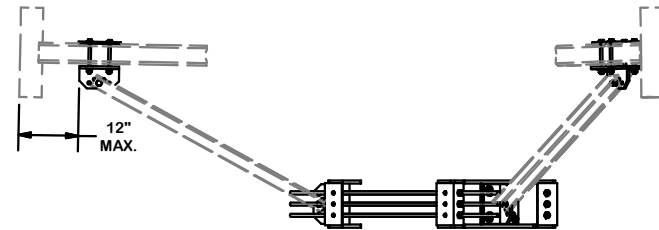
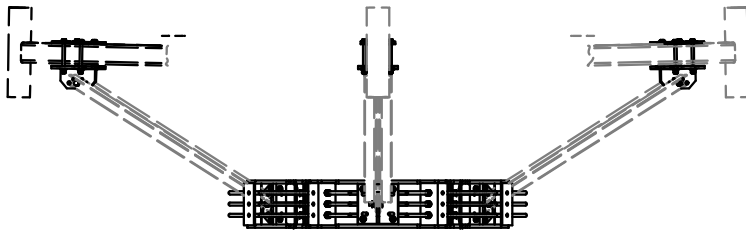
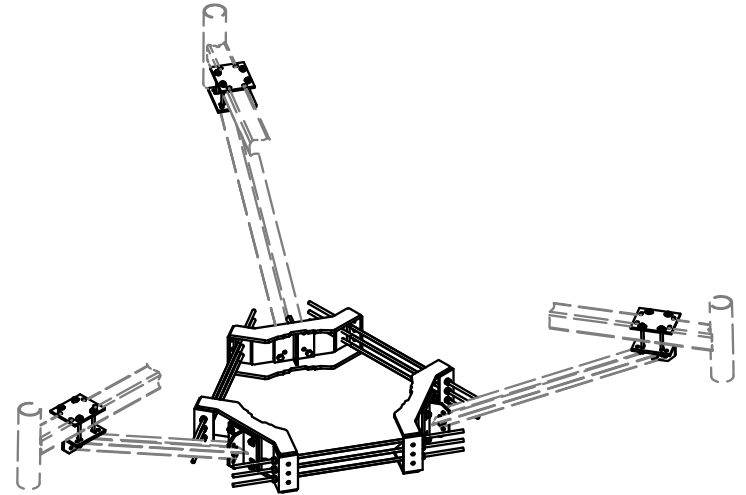
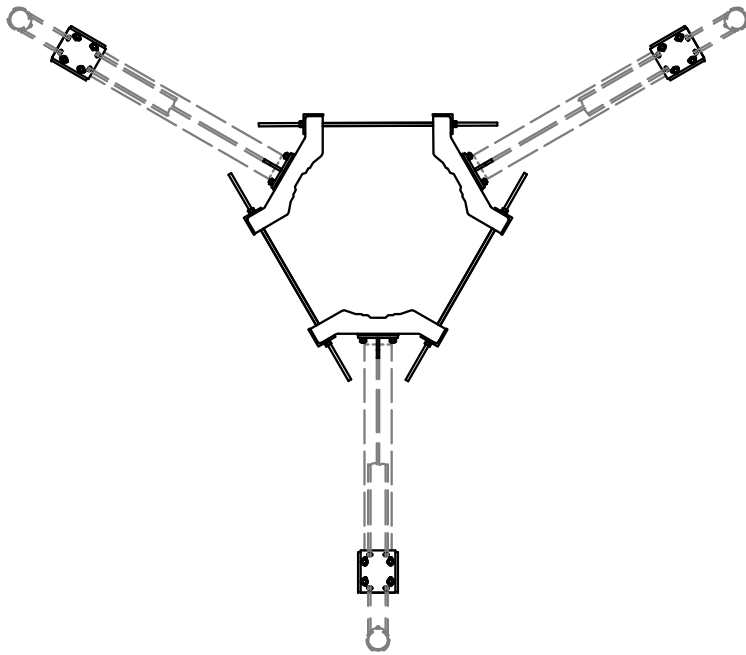
DESCRIPTION	
PLATFORM REINFORCEMENT KIT NO ANGLE	
CPD NO. 4488	DRAWN BY CEK 7/23/2014
CLASS 81	SUB 01
DRAWING USAGE CUSTOMER	ENG. APPROVAL BMC 1/18/2016

A valmont COMPANY

Locations:
New York, NY
Atlanta, GA
Los Angeles, CA
Plymouth, IN
Salem, OR
Dallas, TX

Engineering Support Team:
1-888-753-7446

PART NO.	PRK-NA
DWG. NO.	PRK-NA



TOLERANCE NOTES

**TOLERANCES ON DIMENSIONS, UNLESS OTHERWISE NOTED ARE:
 SAWED, SHEARED AND GAS CUT EDGES ($\pm 0.030"$)
 DRILLED AND GAS CUT HOLES ($\pm 0.030"$) - NO CONING OF HOLES
 LASER CUT EDGES AND HOLES ($\pm 0.010"$) - NO CONING OF HOLES
 BENDS ARE $\pm 1/2$ DEGREE
 ALL OTHER MACHINING ($\pm 0.030"$)
 ALL OTHER ASSEMBLY ($\pm 0.060"$)**

PROPRIETARY NOTE:
 THE DATA AND TECHNIQUES CONTAINED IN THIS DRAWING ARE PROPRIETARY INFORMATION OF VALMONT
 INDUSTRIES AND CONSIDERED A TRADE SECRET. ANY USE OR DISCLOSURE WITHOUT THE CONSENT OF
 VALMONT INDUSTRIES IS STRICTLY PROHIBITED.

DESCRIPTION
**PLATFORM REINFORCEMENT KIT
 NO ANGLE**



Locations:
 New York, NY
 Atlanta, GA
 Los Angeles, CA
 Plymouth, IN
 Salem, OR
 Dallas, TX
 Engineering
 Support Team:
 1-888-753-7446

REV	DESCRIPTION OF REVISIONS	CPD	BY	DATE
B	CHANGED X-253992 TO X-TBW		CEK	9/19/2018
A	CHANGED ALL 5/8" BOLTS TO A582114	4488	CEK	10/1/2015

CPD NO.	DRAWN BY	ENG. APPROVAL
4488	CEK 7/23/2014	
CLASS	SUB	DRAWING USAGE
81	01	CUSTOMER
		CHECKED BY
		BMC 1/18/2016

PART NO.
PRK-NA
DWG. NO.
PRK-NA