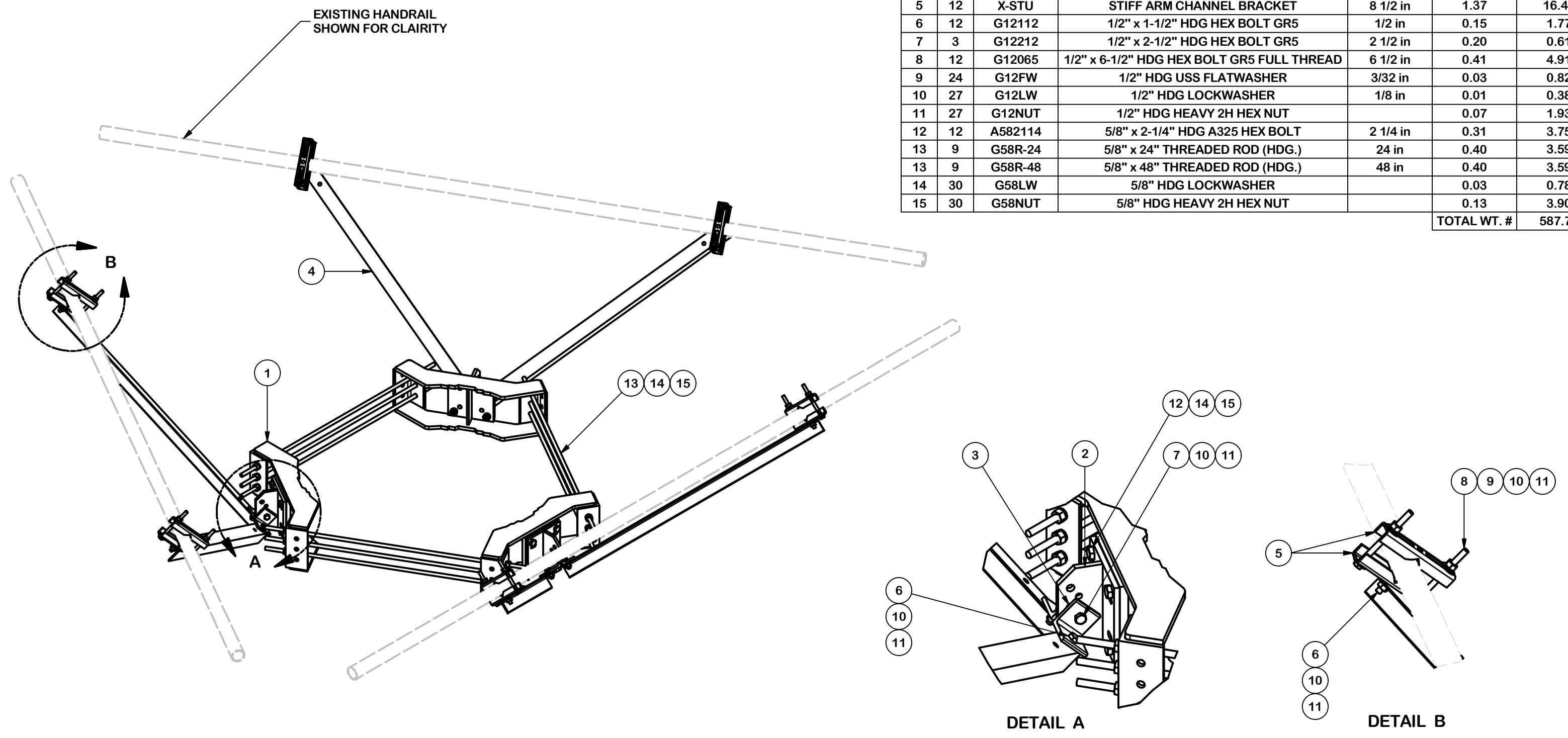


PARTS LIST						
ITEM	QTY	PART NO.	PART DESCRIPTION	LENGTH	UNIT WT.	NET WT.
1	3	X-LWRM	RING MOUNT WELDMENT		68.81	206.42
2	3	X-TBW	T-BRACKET WELDMENT		13.60	40.80
3	6	SHCM-T	CHAIN MOUNT TIGHTENER BRACKET	3 in	1.86	11.15
4	6	X-232697	TRPD-HD DIAGONAL ANGLE - SITE PRO 1	52 1/2 in	14.35	86.08
5	12	X-STU	STIFF ARM CHANNEL BRACKET	8 1/2 in	1.37	16.46
6	12	G12112	1/2" x 1-1/2" HDG HEX BOLT GR5	1/2 in	0.15	1.77
7	3	G12212	1/2" x 2-1/2" HDG HEX BOLT GR5	2 1/2 in	0.20	0.61
8	12	G12065	1/2" x 6-1/2" HDG HEX BOLT GR5 FULL THREAD	6 1/2 in	0.41	4.91
9	24	G12FW	1/2" HDG USS FLATWASHER	3/32 in	0.03	0.82
10	27	G12LW	1/2" HDG LOCKWASHER	1/8 in	0.01	0.38
11	27	G12NUT	1/2" HDG HEAVY 2H HEX NUT		0.07	1.93
12	12	A582114	5/8" x 2-1/4" HDG A325 HEX BOLT	2 1/4 in	0.31	3.75
13	9	G58R-24	5/8" x 24" THREADED ROD (HDG.)	24 in	0.40	3.59
13	9	G58R-48	5/8" x 48" THREADED ROD (HDG.)	48 in	0.40	3.59
14	30	G58LW	5/8" HDG LOCKWASHER		0.03	0.78
15	30	G58NUT	5/8" HDG HEAVY 2H HEX NUT		0.13	3.90
					TOTAL WT. #	587.71



**TOLERANCE NOTES**

TOLERANCES ON DIMENSIONS, UNLESS OTHERWISE NOTED ARE:  
 SAWED, SHEARED AND GAS CUT EDGES ( $\pm 0.030''$ )  
 DRILLED AND GAS CUT HOLES ( $\pm 0.030''$ ) - NO CONING OF HOLES  
 LASER CUT EDGES AND HOLES ( $\pm 0.010''$ ) - NO CONING OF HOLES  
 BENDS ARE  $\pm 1/2$  DEGREE  
 ALL OTHER MACHINING ( $\pm 0.030''$ )  
 ALL OTHER ASSEMBLY ( $\pm 0.060''$ )

PROPRIETARY NOTE:  
 THE DATA AND TECHNIQUES CONTAINED IN THIS DRAWING ARE PROPRIETARY INFORMATION OF VALMONT INDUSTRIES AND CONSIDERED A TRADE SECRET. ANY USE OR DISCLOSURE WITHOUT THE CONSENT OF VALMONT INDUSTRIES IS STRICTLY PROHIBITED.

DESCRIPTION

**HANDRAIL REINFORCEMENT KIT**

**SITE PRO 1**

Engineering Support Team:  
 1-888-753-7446

Locations:  
 New York, NY  
 Atlanta, GA  
 Los Angeles, CA  
 Plymouth, IN  
 Salem, OR  
 Dallas, TX

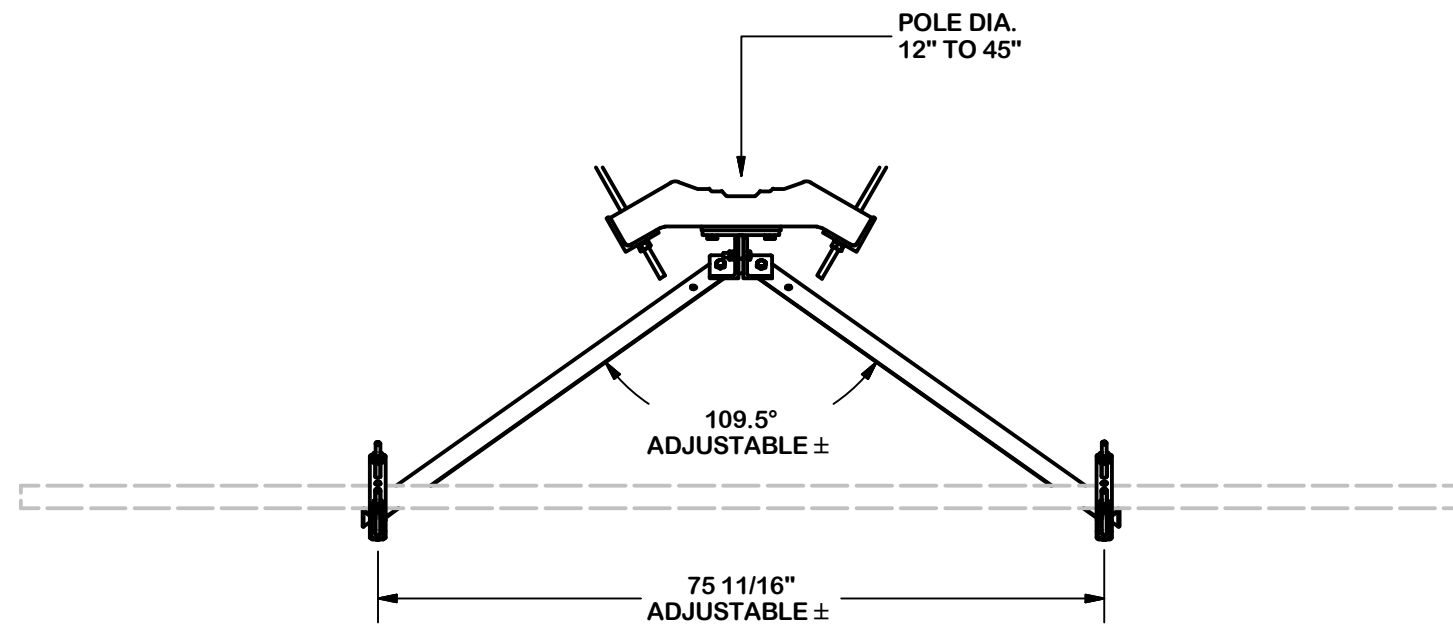
A valmont COMPANY

REV	DESCRIPTION OF REVISIONS	CPD	BY	DATE
A	CHANGED MAX. DIA. FOR HANDRAIL CONNECTION	SP1	BC	10/23/2017

REVISION HISTORY

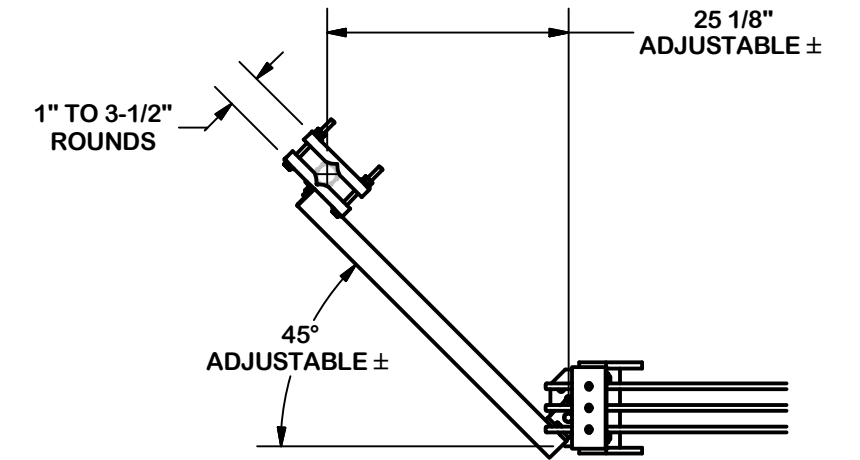
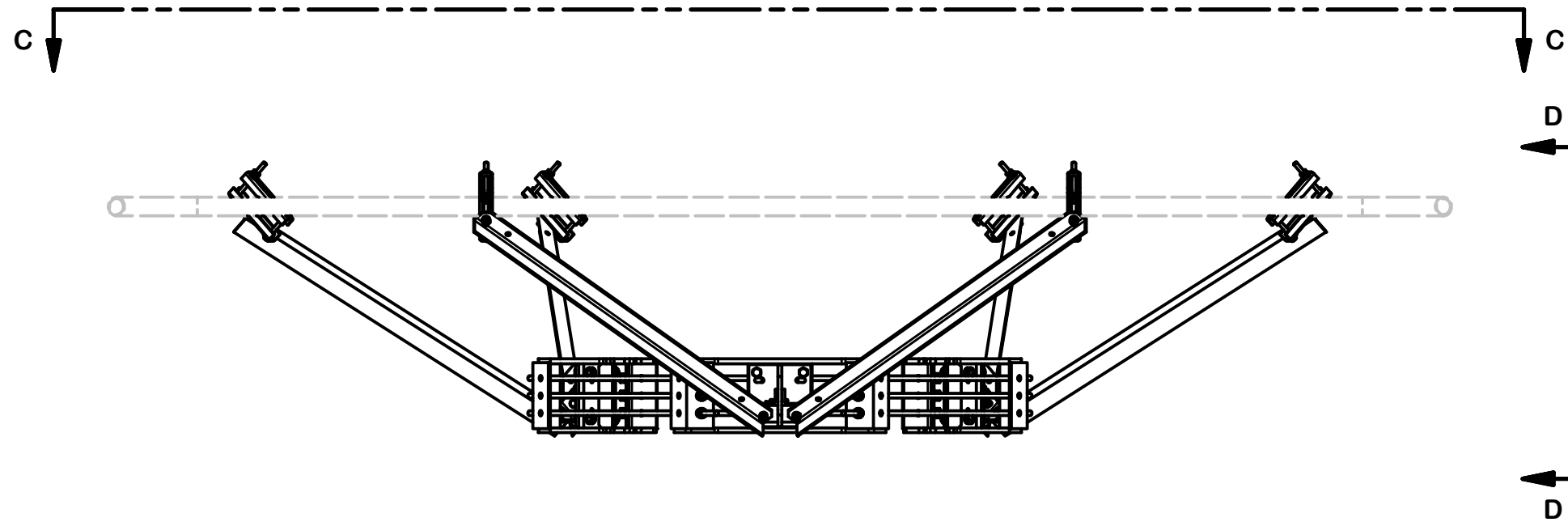
CPD NO.	DRAWN BY	ENG. APPROVAL
SP1	CSL3 2/23/2017	3RD PARTY
CLASS	DRAWING USAGE	CHECKED BY
81	SHOP	BMC 3/16/2017

PART NO.	PRK-SFS
DWG. NO.	PRK-SFS



PARTIAL VIEW C-C

VERTICAL POSITION



PARTIAL VIEW D-D

**TOLERANCE NOTES**

TOLERANCES ON DIMENSIONS, UNLESS OTHERWISE NOTED ARE:  
 SAWED, SHEARED AND GAS CUT EDGES ( $\pm 0.030$ " )  
 DRILLED AND GAS CUT HOLES ( $\pm 0.030$ " ) - NO CONING OF HOLES  
 LASER CUT EDGES AND HOLES ( $\pm 0.010$ " ) - NO CONING OF HOLES  
 BENDS ARE  $\pm 1/2$  DEGREE  
 ALL OTHER MACHINING ( $\pm 0.030$ " )  
 ALL OTHER ASSEMBLY ( $\pm 0.060$ " )

PROPRIETARY NOTE:  
 THE DATA AND TECHNIQUES CONTAINED IN THIS DRAWING ARE PROPRIETARY INFORMATION OF VALMONT INDUSTRIES AND CONSIDERED A TRADE SECRET. ANY USE OR DISCLOSURE WITHOUT THE CONSENT OF VALMONT INDUSTRIES IS STRICTLY PROHIBITED.

DESCRIPTION  
**HANDRAIL REINFORCEMENT KIT**

**SITE PRO 1**  
 A valmont COMPANY

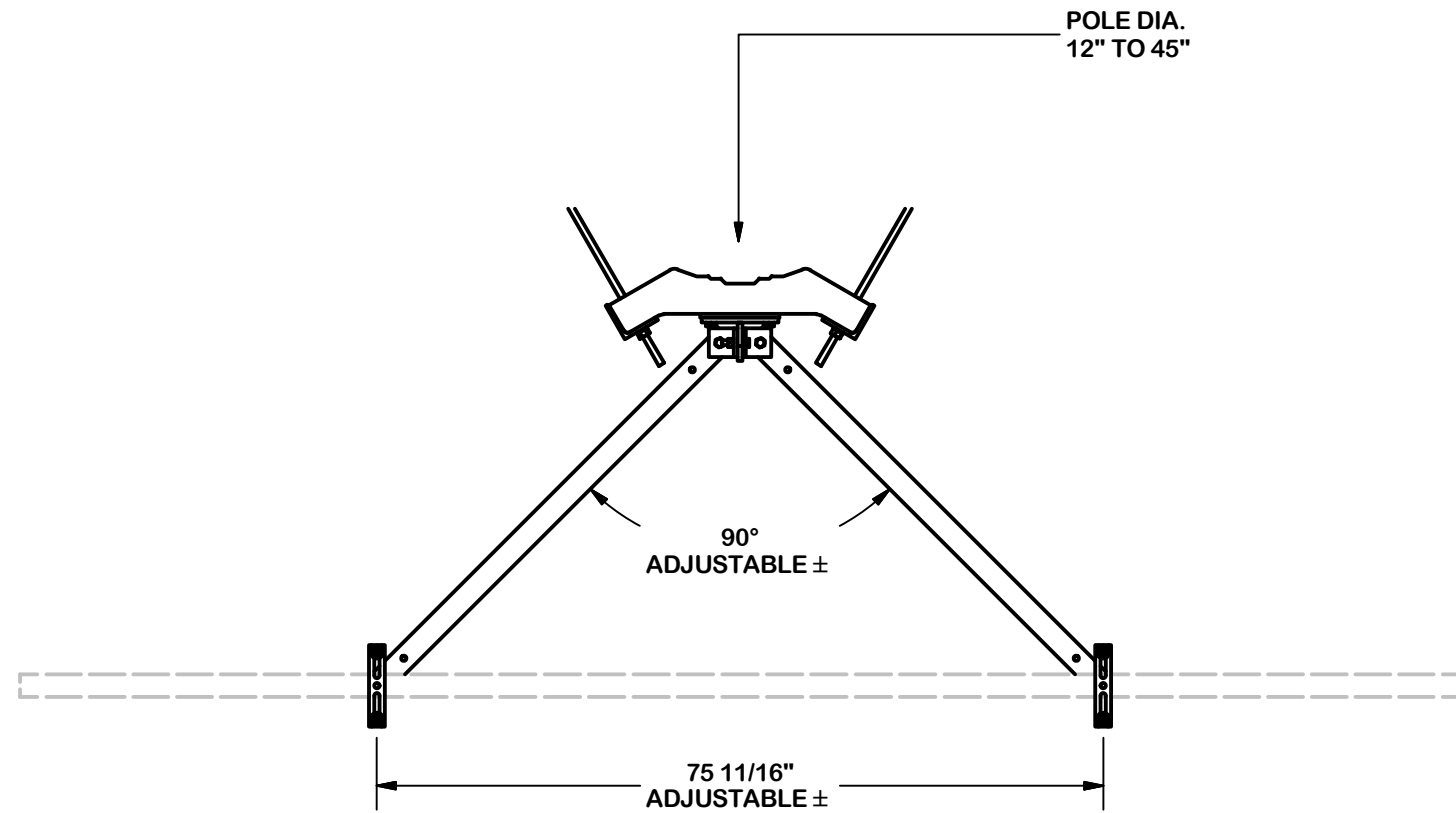
Engineering Support Team:  
 1-888-753-7446

Locations:  
 New York, NY  
 Atlanta, GA  
 Los Angeles, CA  
 Plymouth, IN  
 Salem, OR  
 Dallas, TX

REV	DESCRIPTION OF REVISIONS	CPD	BY	DATE
A	CHANGED MAX. DIA. FOR HANDRAIL CONNECTION	SP1	BC	10/23/2017

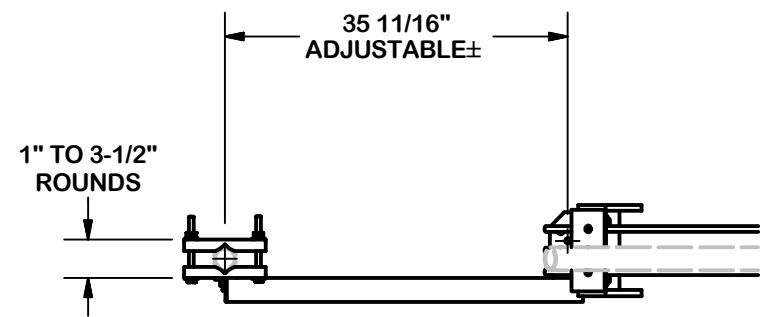
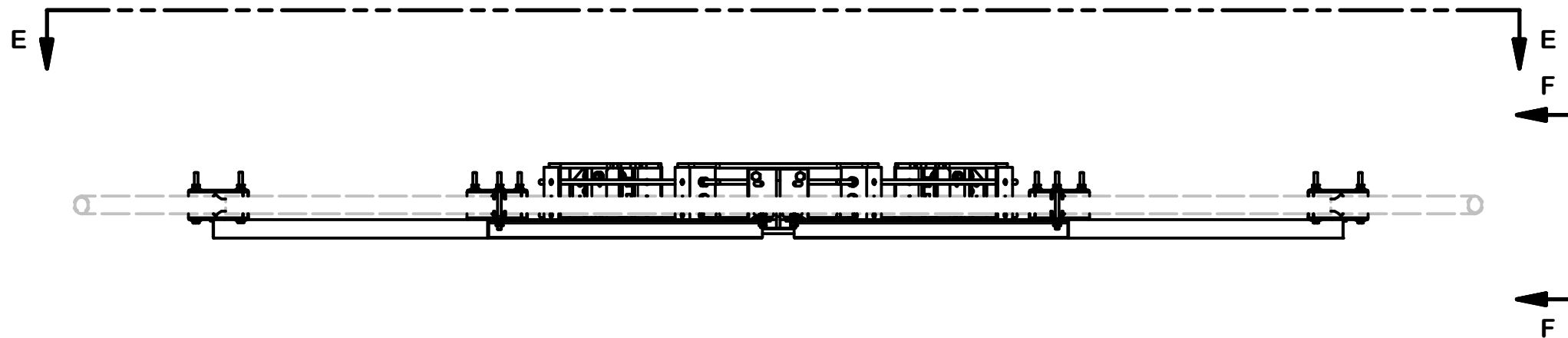
CPD NO.	DRAWN BY	ENG. APPROVAL
SP1	CSL3 2/23/2017	3RD PARTY
CLASS	DRAWING USAGE	CHECKED BY
81	SHOP	BMC 3/16/2017

PART NO.	PRK-SFS
DWG. NO.	PRK-SFS



PARTIAL VIEW E-E

HORIZONTAL POSITION



PARTIAL VIEW F-F

**TOLERANCE NOTES**

TOLERANCES ON DIMENSIONS, UNLESS OTHERWISE NOTED ARE:  
 SAWED, SHEARED AND GAS CUT EDGES ( $\pm 0.030''$ )  
 DRILLED AND GAS CUT HOLES ( $\pm 0.030''$ ) - NO CONING OF HOLES  
 LASER CUT EDGES AND HOLES ( $\pm 0.010''$ ) - NO CONING OF HOLES  
 BENDS ARE  $\pm 1/2$  DEGREE  
 ALL OTHER MACHINING ( $\pm 0.030''$ )  
 ALL OTHER ASSEMBLY ( $\pm 0.060''$ )

PROPRIETARY NOTE:  
 THE DATA AND TECHNIQUES CONTAINED IN THIS DRAWING ARE PROPRIETARY INFORMATION OF VALMONT INDUSTRIES AND CONSIDERED A TRADE SECRET. ANY USE OR DISCLOSURE WITHOUT THE CONSENT OF VALMONT INDUSTRIES IS STRICTLY PROHIBITED.

DESCRIPTION  
**HANDRAIL REINFORCEMENT KIT**

**SITE PRO 1**  
 A valmont COMPANY

Engineering Support Team:  
 1-888-753-7446

Locations:  
 New York, NY  
 Atlanta, GA  
 Los Angeles, CA  
 Plymouth, IN  
 Salem, OR  
 Dallas, TX

REV	DESCRIPTION OF REVISIONS	CPD	BY	DATE
A	CHANGED MAX. DIA. FOR HANDRAIL CONNECTION	SP1	BC	10/23/2017

CPD NO.	DRAWN BY	ENG. APPROVAL
SP1	CSL3 2/23/2017	3RD PARTY
CLASS	DRAWING USAGE	CHECKED BY
81	SHOP	BMC 3/16/2017

PART NO.	PRK-SFS
DWG. NO.	PRK-SFS