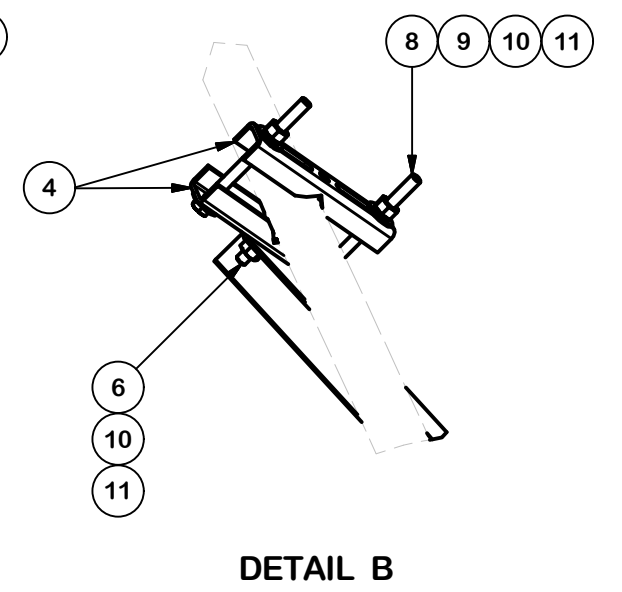
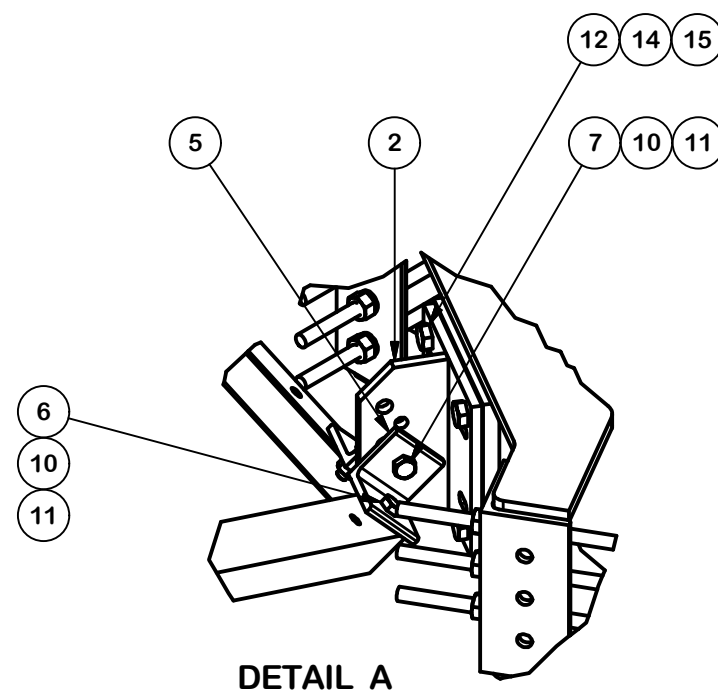
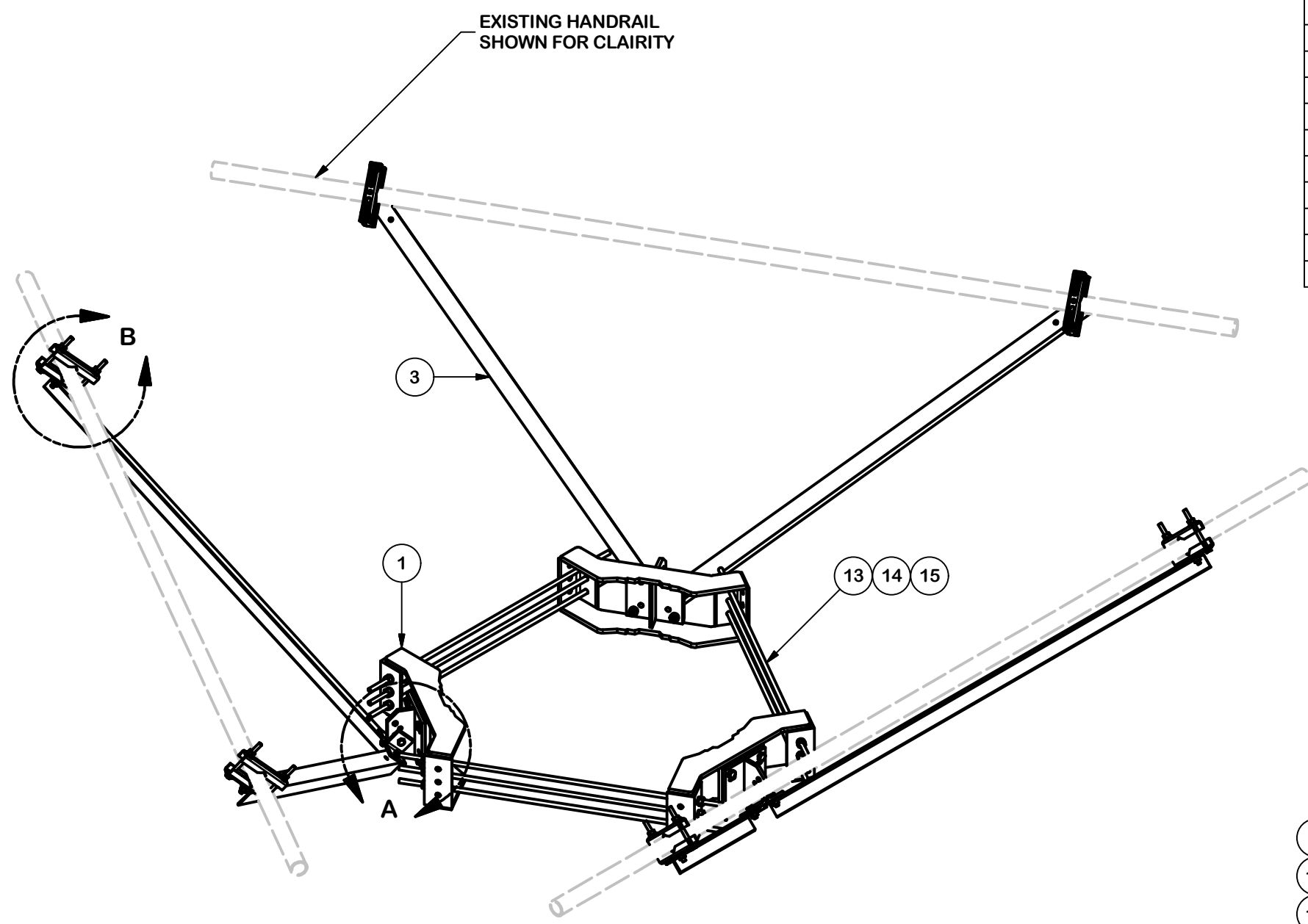


PARTS LIST						
ITEM	QTY	PART NO.	PART DESCRIPTION	LENGTH	UNIT WT.	NET WT.
1	3	X-LWRM	RING MOUNT WELDMENT		68.81	206.42
2	3	X-TBW	T-BRACKET WELDMENT		13.60	40.80
3	6	X-254924	DIAGONAL ANGLE - SITE PRO 1	72 in	19.71	118.24
4	12	X-STU	STIFF ARM CHANNEL BRACKET	8 1/2 in	1.37	16.46
5	6	SHCM-T	CHAIN MOUNT TIGHTENER BRACKET	3 in	1.86	11.15
6	12	G12112	1/2" x 1-1/2" HDG HEX BOLT GR5	1/2 in	0.15	1.77
7	3	G12212	1/2" x 2-1/2" HDG HEX BOLT GR5	2 1/2 in	0.20	0.61
8	12	G12065	1/2" x 6-1/2" HDG HEX BOLT GR5 FULL THREAD	6 1/2 in	0.41	4.91
9	24	G12FW	1/2" HDG USS FLATWASHER	3/32 in	0.03	0.82
10	27	G12LW	1/2" HDG LOCKWASHER	1/8 in	0.01	0.38
11	27	G12NUT	1/2" HDG HEAVY 2H HEX NUT		0.07	1.93
12	12	A582114	5/8" x 2-1/4" HDG A325 HEX BOLT	2 1/4 in	0.31	3.75
13	9	G58R-24	5/8" x 24" THREADED ROD (HDG.)	24 in	0.40	3.59
13	9	G58R-48	5/8" x 48" THREADED ROD (HDG.)	48 in	0.40	3.59
14	30	G58LW	5/8" HDG LOCKWASHER		0.03	0.78
15	30	G58NUT	5/8" HDG HEAVY 2H HEX NUT		0.13	3.90
					TOTAL WT. #	642.04



REV	DESCRIPTION OF REVISIONS	CPD	BY	DATE
A	CHANGED MAX. DIA. FOR HANDRAIL CONNECTION	SP1	BC	10/25/2017
REVISION HISTORY				

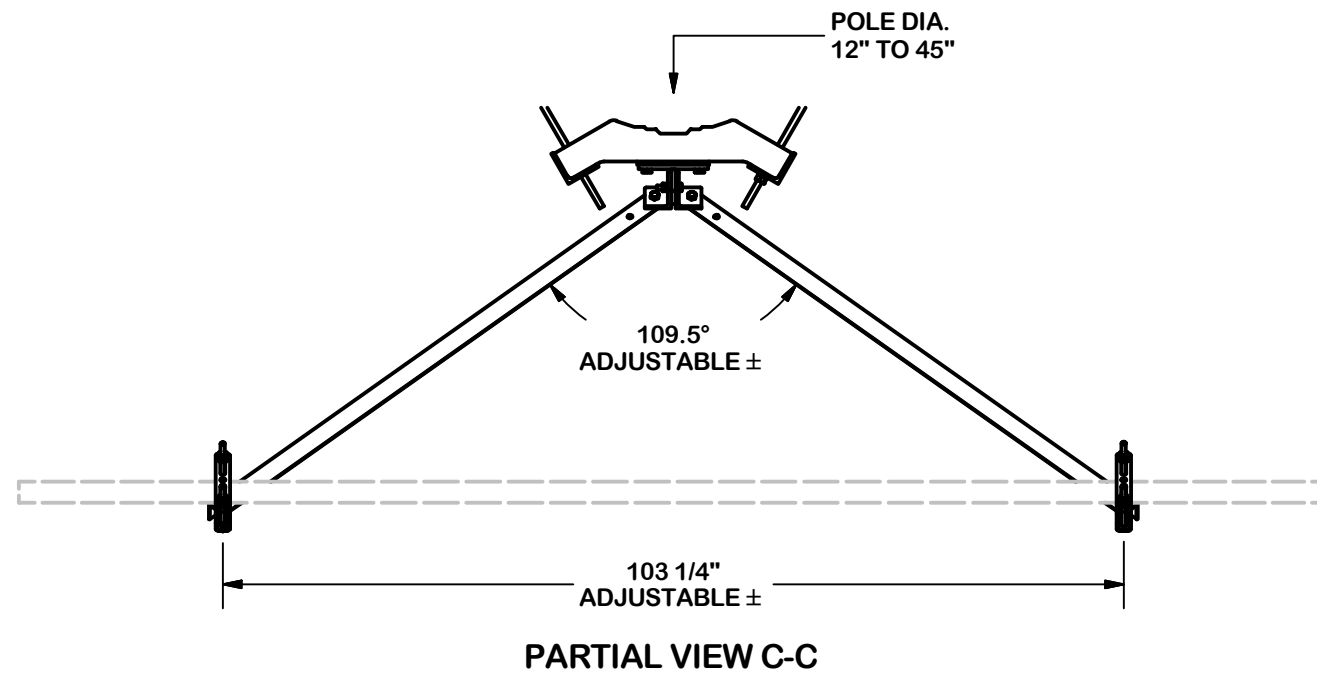
TOLERANCE NOTES

TOLERANCES ON DIMENSIONS, UNLESS OTHERWISE NOTED ARE:
 SAWED, SHEARED AND GAS CUT EDGES ($\pm 0.030"$)
 DRILLED AND GAS CUT HOLES ($\pm 0.030"$) - NO CONING OF HOLES
 LASER CUT EDGES AND HOLES ($\pm 0.010"$) - NO CONING OF HOLES
 BENDS ARE $\pm 1/2$ DEGREE
 ALL OTHER MACHINING ($\pm 0.030"$)
 ALL OTHER ASSEMBLY ($\pm 0.060"$)

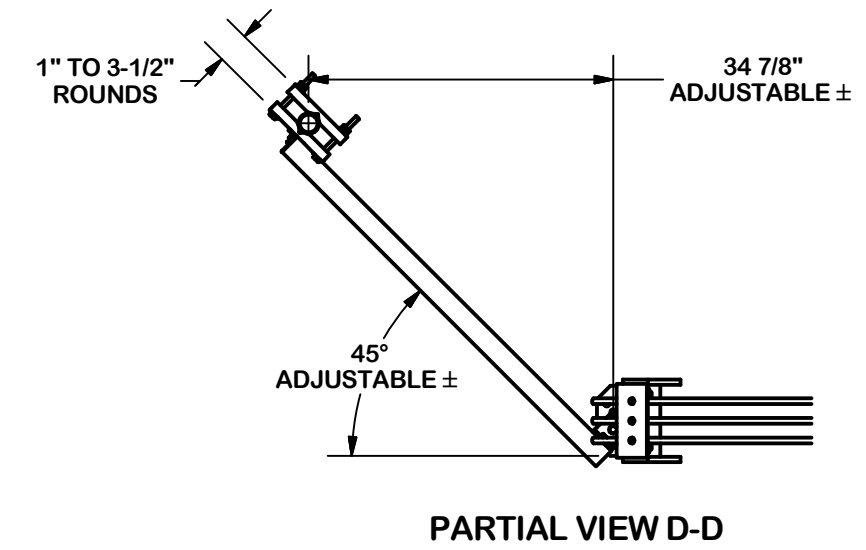
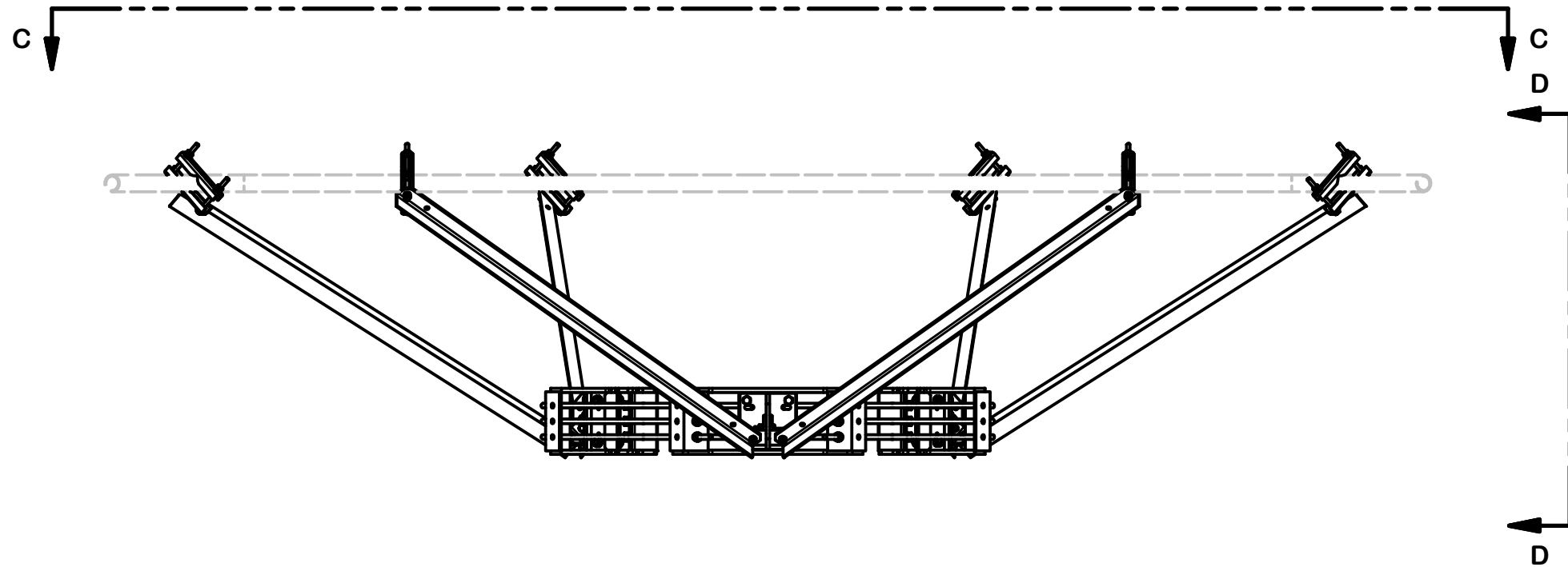
PROPRIETARY NOTE:
 THE DATA AND TECHNIQUES CONTAINED IN THIS DRAWING ARE PROPRIETARY INFORMATION OF VALMONT INDUSTRIES AND CONSIDERED A TRADE SECRET. ANY USE OR DISCLOSURE WITHOUT THE CONSENT OF VALMONT INDUSTRIES IS STRICTLY PROHIBITED.

DESCRIPTION			
HANDRAIL REINFORCEMENT KIT (LONG)			
CPD NO.	DRAWN BY	ENG. APPROVAL	
SP1	CSL3 2/23/2017	3RD PARTY	
CLASS	SUB	DRAWING USAGE	CHECKED BY
81	02	SHOP	BMC 9/8/2017

 A valmont COMPANY	Locations: New York, NY Atlanta, GA Los Angeles, CA Plymouth, IN Salem, OR Dallas, TX
	Engineering Support Team: 1-888-753-7446
PART NO.	PRK-SFS-L
DWG. NO.	PRK-SFS-L



VERTICAL POSITION



TOLERANCE NOTES

TOLERANCES ON DIMENSIONS, UNLESS OTHERWISE NOTED ARE:
 SAWED, SHEARED AND GAS CUT EDGES ($\pm 0.030"$)
 DRILLED AND GAS CUT HOLES ($\pm 0.030"$) - NO CONING OF HOLES
 LASER CUT EDGES AND HOLES ($\pm 0.010"$) - NO CONING OF HOLES
 BENDS ARE $\pm 1/2$ DEGREE
 ALL OTHER MACHINING ($\pm 0.030"$)
 ALL OTHER ASSEMBLY ($\pm 0.060"$)

PROPRIETARY NOTE:
 THE DATA AND TECHNIQUES CONTAINED IN THIS DRAWING ARE PROPRIETARY INFORMATION OF VALMONT INDUSTRIES AND CONSIDERED A TRADE SECRET. ANY USE OR DISCLOSURE WITHOUT THE CONSENT OF VALMONT INDUSTRIES IS STRICTLY PROHIBITED.

DESCRIPTION
HANDRAIL REINFORCEMENT KIT (LONG)

SITE PRO 1
 A valmont COMPANY

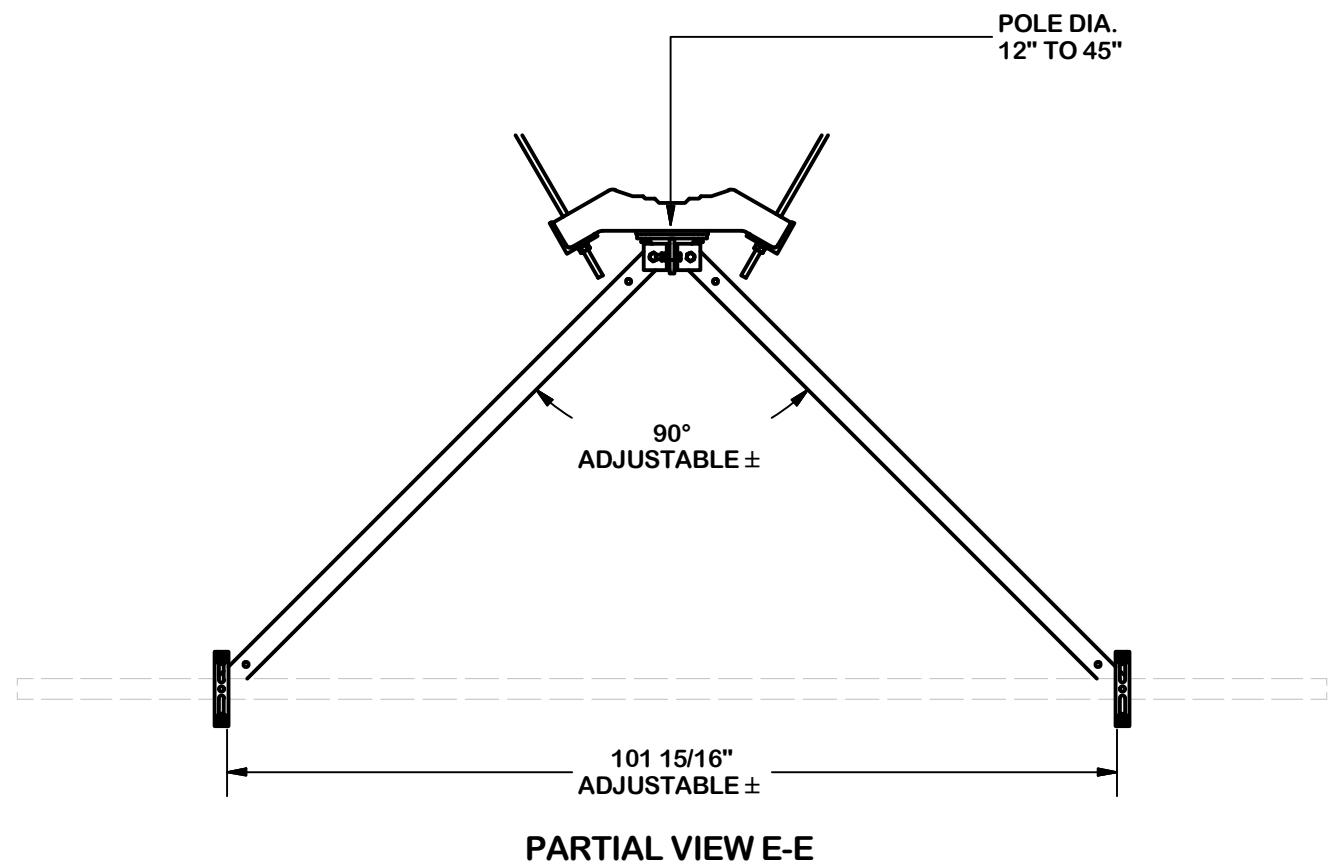
Engineering Support Team:
 1-888-753-7446

Locations:
 New York, NY
 Atlanta, GA
 Los Angeles, CA
 Plymouth, IN
 Salem, OR
 Dallas, TX

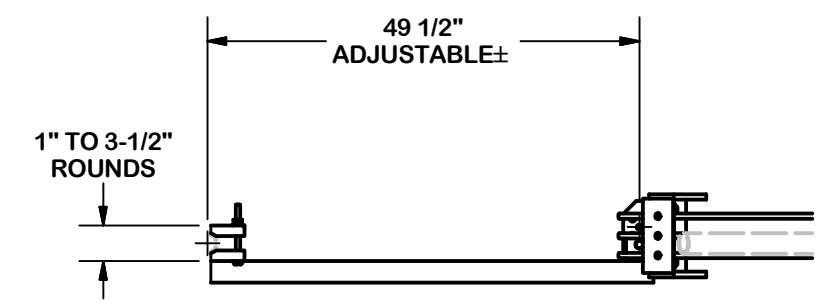
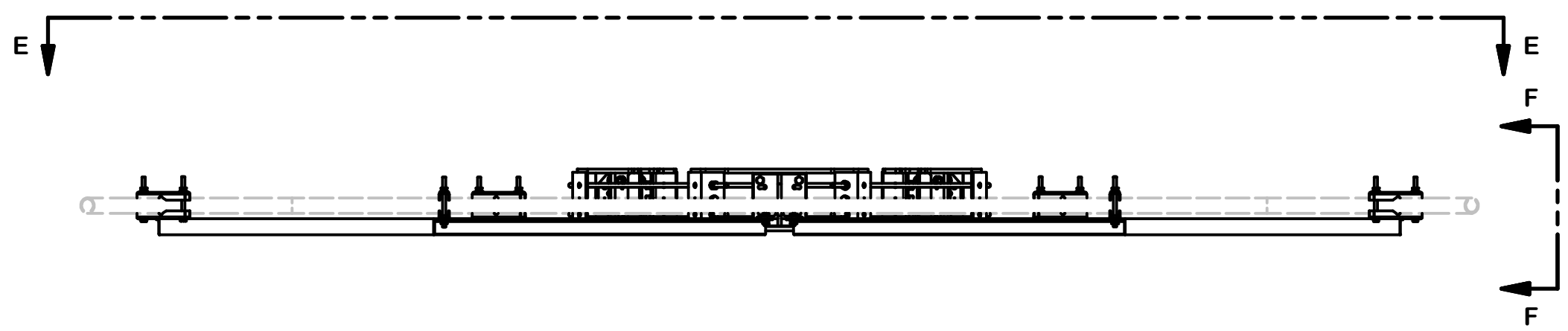
REV	DESCRIPTION OF REVISIONS	CPD	BY	DATE
A	CHANGED MAX. DIA. FOR HANDRAIL CONNECTION	SP1	BC	10/25/2017
REVISION HISTORY				

CPD NO. SP1	DRAWN BY CSL3 2/23/2017	ENG. APPROVAL 3RD PARTY
CLASS 81	SUB 02	DRAWING USAGE SHOP
CHECKED BY BMC 9/8/2017		

PART NO. PRK-SFS-L	2 OF 3 PAGE
DWG. NO. PRK-SFS-L	



HORIZONTAL POSITION



PARTIAL VIEW F-F

TOLERANCE NOTES

TOLERANCES ON DIMENSIONS, UNLESS OTHERWISE NOTED ARE:
 SAWED, SHEARED AND GAS CUT EDGES (± 0.030")
 DRILLED AND GAS CUT HOLES (± 0.030") - NO CONING OF HOLES
 LASER CUT EDGES AND HOLES (± 0.010") - NO CONING OF HOLES
 BENDS ARE ± 1/2 DEGREE
 ALL OTHER MACHINING (± 0.030")
 ALL OTHER ASSEMBLY (± 0.060")

PROPRIETARY NOTE:
 THE DATA AND TECHNIQUES CONTAINED IN THIS DRAWING ARE PROPRIETARY INFORMATION OF VALMONT INDUSTRIES AND CONSIDERED A TRADE SECRET. ANY USE OR DISCLOSURE WITHOUT THE CONSENT OF VALMONT INDUSTRIES IS STRICTLY PROHIBITED.

DESCRIPTION

HANDRAIL REINFORCEMENT KIT (LONG)

SITE PRO 1

Engineering Support Team:
1-888-753-7446

Locations:
New York, NY
Atlanta, GA
Los Angeles, CA
Plymouth, IN
Salem, OR
Dallas, TX

A valmont COMPANY

REV	DESCRIPTION OF REVISIONS	CPD	BY	DATE
A	CHANGED MAX. DIA. FOR HANDRAIL CONNECTION	SP1	BC	10/25/2017

REVISION HISTORY

CPD NO.	DRAWN BY	ENG. APPROVAL
SP1	CSL3 2/23/2017	3RD PARTY
CLASS	DRAWING USAGE	CHECKED BY
81	SHOP	BMC 9/8/2017

PART NO.	PRK-SFS-L
DWG. NO.	PRK-SFS-L