

SPECIFICATIONS

General	PIM Shield Cable Cushions enable ConcealFab's Hybrid Snap-ins to support smaller diameter fiber, power, grounding and RET cables in high risk PIM zones			
Mounting	Cable Cushions are designed to insert into ConcealFab's Hybrid Snap-in. The inner spring fingers of the Hybrid Snap-in securely grip the cushion and prevent it from falling out while installing the cable.			
System PIM performance (when tested at next higher assembly)	IM3 <-100 dBm when tested in accordance with proposed IEC 62037-8, near field test, 2x 20W test tones, while subjected to dynamic stimulus			
Material	EPDM Rubber			
Color	Varies based on cable size			
Operating Temperature	-40°C to +70°C			
Qty Per Package	10			
Part Number	Description	Cable Diameter (mm)	Install inside Hybrid Snap-In	Color
PSCC-1001-10	PIM Shield Cable Cushion, 4.5 to 6.5 mm	4.5 - 6.5	PSHS-1319-10	Blue
PSCC-1002-10	PIM Shield Cable Cushion, 6.6 to 8.5 mm	6.6 - 8.5	PSHS-1319-10	Gray
PSCC-1003-10	PIM Shield Cable Cushion, 8.6 to 10.5 mm	8.6 - 10.5	PSHS-1319-10	Black
PSCC-2001-10	PIM Shield Cable Cushion, 10.6 to 12.5 mm	10.6 - 12.5	PSHS-2630-10	Orange
PSCC-2002-10	PIM Shield Cable Cushion, 12.6 to 15.5 mm	12.6 - 15.5	PSHS-2630-10	Black
PSCC-2003-10	PIM Shield Cable Cushion, 15.6 to 17.5 mm	15.6 - 17.5	PSHS-2630-10	Gray
PSCC-4001-10	PIM Shield Cable Cushion, 19.6 to 30.3 mm	19.6 - 30.3	PSHS-4852-10	Black

June 2022

Installation Instructions

PSCC-XXXX-10 – PIM Shield Cable Cushion,
Qty 10

STEP 1

Insert Cable Cushion into Hybrid Snap-In.

STEP 2

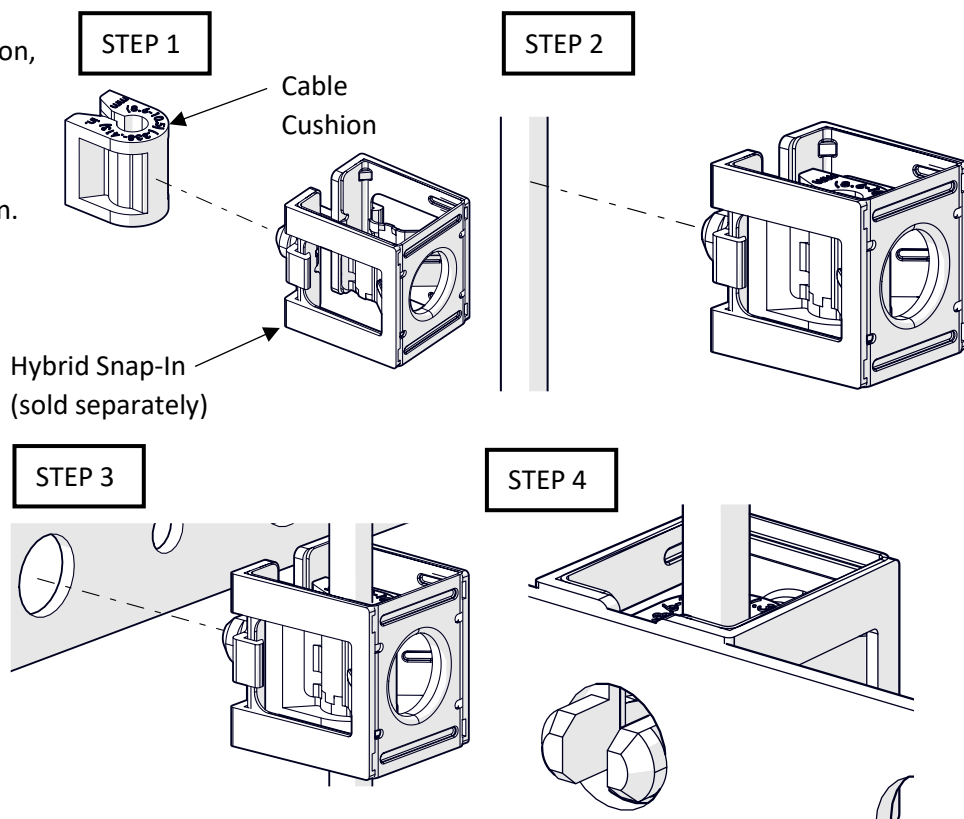
Press Assembly onto the cable.

STEP 3

Press Hybrid Snap-In into hole.

STEP 4

Assure the correct hooking of the tabs.



June 2022

Installation Instructions

PSCC-XXXX-10 – PIM Shield Cable Cushion,
Qty 10

STEP 1

Insert Cable Cushion into Hybrid Snap-In.

STEP 2

Press Assembly onto the cable.

STEP 3

Press Hybrid Snap-In into hole.

STEP 4

Assure the correct hooking of the tabs.

