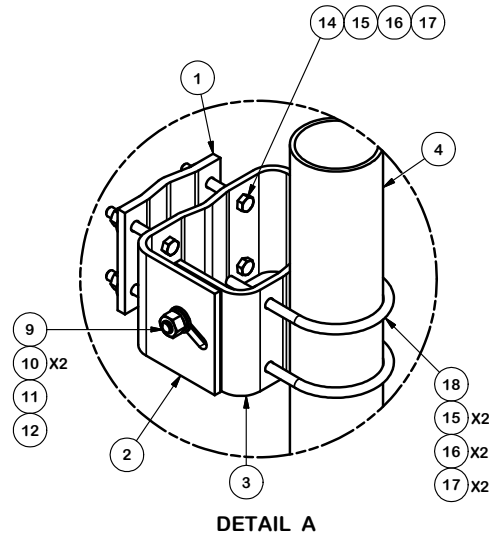
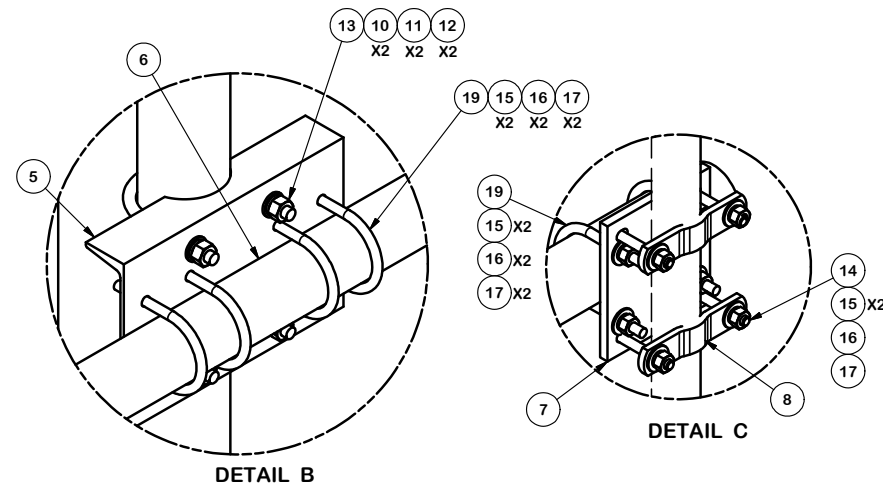


ORDER SEARATELY
1-1/2" TO 4-1/2" DIA
ANTENNA PIPE

SEE SHT 2
FOR MORE DETAILS



DETAIL A



DETAIL B

DETAIL C

PARTS LIST						
ITEM	QTY	PART NO.	PART DESCRIPTION	LENGTH	UNIT WT.	NET WT.
1	2	X-159999	BACKING PLATE		5.73	11.46
2	2	X-155561	UNIVERSAL PIPE MOUNTING PLATE (OUTER)		13.16	26.31
3	2	X-154463	UNIVERSAL PIPE MOUNTING PLATE (INNER)		10.52	21.03
4	1	P472	4-1/2" X 72" SCH. 40 GALVANIZED PIPE	72 in	64.89	64.89
5	1	X-SP216	LARGE SUPPORT CROSS PLATE		20.83	20.83
6	1	P360	3-1/2" X 60" SCH 40 GALVANIZED PIPE	60 in	37.97	37.97
7	2	SCX7	CROSSOVER PLATE	8 in	7.55	15.10
8	4	X-115765	5" V-CLAMP		1.02	4.07
9	4	A5802	5/8" x 2" HDG A325 HEX BOLT	2 in	0.27	1.09
10	12	A58FW	5/8" HDG A325 FLATWASHER		0.03	0.41
11	8	G58LW	5/8" HDG LOCKWASHER		0.03	0.21
12	8	A58NUT	5/8" HDG A325 HEX NUT		0.13	1.04
13	2	X-UB5458	5/8" X 4-5/8" X 7" X 3" U-BOLT (HDG.)		0.66	1.31
14	16	G12065	1/2" x 6-1/2" HDG HEX BOLT GR5 FULL THREAD	6 1/2 in	0.41	6.55
14	16	G1204	1/2" x 4" HDG HEX BOLT GR5 FULL THREAD	4 in	0.27	4.32
15	48	G12FW	1/2" HDG USS FLATWASHER		0.03	1.63
16	40	G12LW	1/2" HDG LOCKWASHER		0.01	0.56
17	40	G12NUT	1/2" HDG HEAVY 2H HEX NUT		0.07	2.86
18	4	X-UB1458	1/2" X 4-5/8" X 7" X 3" GALV U-BOLT		0.97	3.89
19	8	X-UB1358	1/2" X 3-5/8" X 5-1/2" X 3" U-BOLT (HDG.)		0.66	5.25
					TOTAL WT. #	230.70

TAPER NOTE:
THE MAXIMUM TAPER ADJUSTMENT IS 5.7° BASED UPON
30" SPACING OF ADJUSTABLE MOUNTING BRACKETS.

THE MAXIMUM TAPER ADJUSTMENT IS 3.8° BASED UPON
45" SPACING OF ADJUSTABLE MOUNTING BRACKET.

TOLERANCE NOTES

TOLERANCES ON DIMENSIONS, UNLESS OTHERWISE NOTED ARE:
SAWED, SHEARED AND GAS CUT EDGES ($\pm 0.030"$)
DRILLED AND GAS CUT HOLES ($\pm 0.030"$) - NO CONING OF HOLES
LASER CUT EDGES AND HOLES ($\pm 0.010"$) - NO CONING OF HOLES
BENDS ARE $\pm 1/2$ DEGREE
ALL OTHER MACHINING ($\pm 0.030"$)
ALL OTHER ASSEMBLY ($\pm 0.060"$)

PROPRIETARY NOTE:
THE DATA AND TECHNIQUES CONTAINED IN THIS DRAWING ARE PROPRIETARY INFORMATION OF VALMONT
INDUSTRIES AND CONSIDERED A TRADE SECRET. ANY USE OR DISCLOSURE WITHOUT THE CONSENT OF
VALMONT INDUSTRIES IS STRICTLY PROHIBITED.

DESCRIPTION
**DUAL ANTENNA MOUNT
WITH R5 STANDOFF**

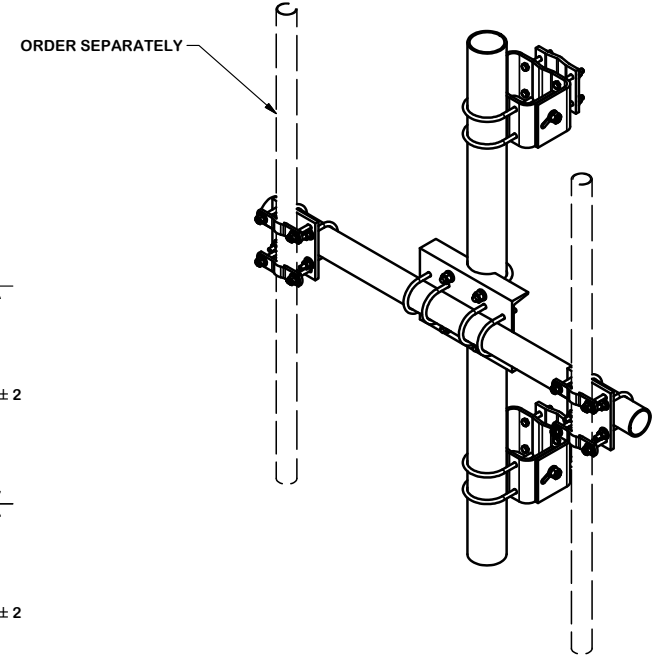
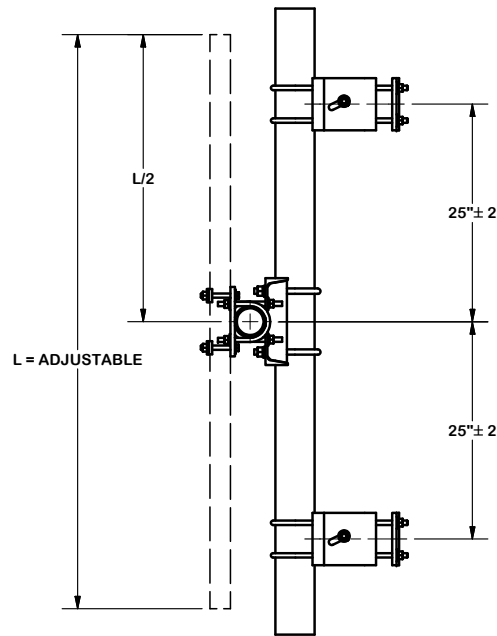
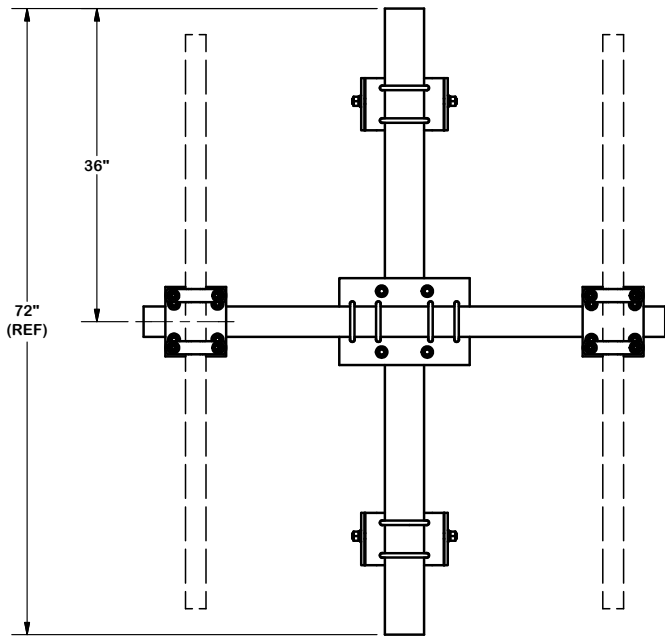
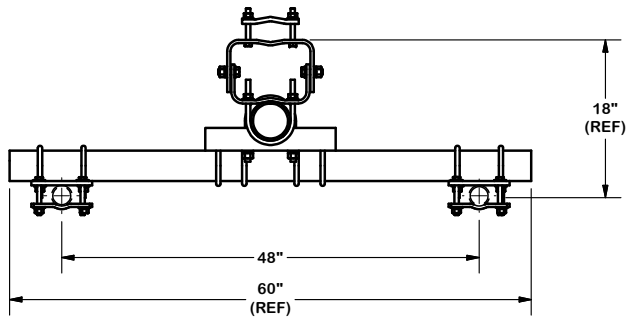
SITE PRO 1
Engineering Support Team:
1-888-753-7446

Locations:
New York, NY
Atlanta, GA
Los Angeles, CA
Plymouth, IN
Salem, OR
Dallas, TX

REV	DESCRIPTION OF REVISIONS	CPD	BY	DATE
A	REDRAWN IN INV. UPDATED VIEWS & TABLE, ITEM 4 WS 63"		KC8	8/13/2012

CPD NO.	DRAWN BY	ENG. APPROVAL
	BMC 1/26/2010	
CLASS	SUB	DRAWING USAGE
81	01	CUSTOMER
CHECKED BY	DATE	
CEK	2/19/2013	

PART NO.	DWG. NO.
R5-216	R5-216



TOLERANCE NOTES

TOLERANCES ON DIMENSIONS, UNLESS OTHERWISE NOTED ARE:
 SAWED, SHEARED AND GAS CUT EDGES ($\pm 0.030"$)
 DRILLED AND GAS CUT HOLES ($\pm 0.030"$) - NO CONING OF HOLES
 LASER CUT EDGES AND HOLES ($\pm 0.010"$) - NO CONING OF HOLES
 BENDS ARE $\pm 1/2$ DEGREE
 ALL OTHER MACHINING ($\pm 0.030"$)
 ALL OTHER ASSEMBLY ($\pm 0.060"$)

PROPRIETARY NOTE:
 THE DATA AND TECHNIQUES CONTAINED IN THIS DRAWING ARE PROPRIETARY INFORMATION OF VALMONT INDUSTRIES AND CONSIDERED A TRADE SECRET. ANY USE OR DISCLOSURE WITHOUT THE CONSENT OF VALMONT INDUSTRIES IS STRICTLY PROHIBITED.

DESCRIPTION
**DUAL ANTENNA MOUNT
 WITH R5 STANDOFF**

SITE PRO 1
 Engineering Support Team:
 1-888-753-7446

Locations:
 New York, NY
 Atlanta, GA
 Los Angeles, CA
 Plymouth, IN
 Salem, OR
 Dallas, TX

A	REDRAWN IN INV. UPDATED VIEWS & TABLE, ITEM 4 WS 63"	KC8	8/13/2012
REV	DESCRIPTION OF REVISIONS	CPD	BY
REVISION HISTORY			

CPD NO.	DRAWN BY	ENG. APPROVAL
	BMC 1/26/2010	
CLASS	DRAWING USAGE	CHECKED BY
81	CUSTOMER	CEK 2/19/2013

PART NO.	R5-216
DWG. NO.	R5-216