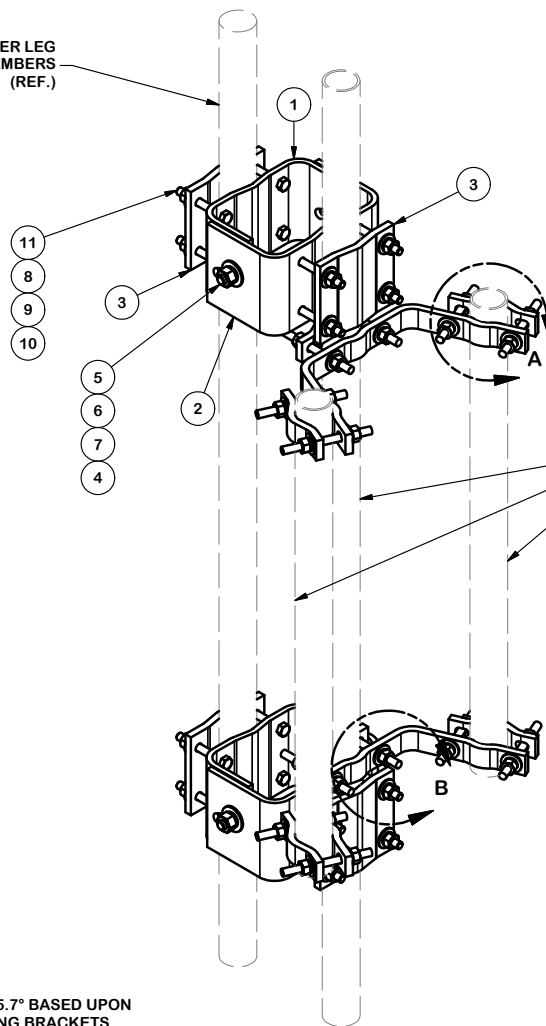
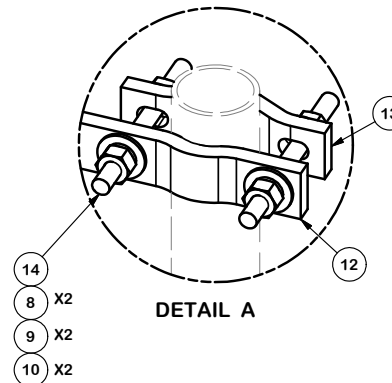


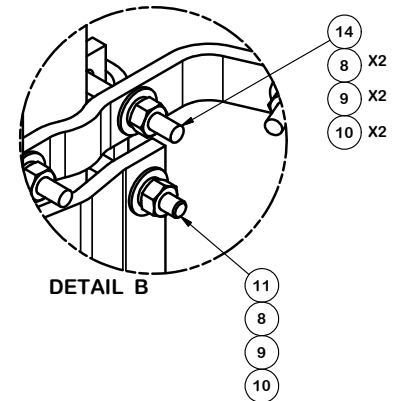
TOWER LEG  
1-1/2" TO 4-1/2" O.D. MEMBERS  
(REF.)



1-1/2" TO 3-1/2" O.D.  
ANTENNA MOUNTING PIPES  
(SOLD SEPARATELY)



DETAIL A



DETAIL B

PARTS LIST						
ITEM	QTY	PART NO.	PART DESCRIPTION	LENGTH	UNIT WT.	NET WT.
1	2	X-154463	UNIVERSAL PIPE MOUNTING PLATE (INNER)		10.52	21.03
2	2	X-155561	UNIVERSAL PIPE MOUNTING PLATE (OUTER)		13.16	26.31
3	4	X-159999	BACKING PLATE		5.73	22.92
4	4	G58NUT	5/8" HDG HEAVY 2H HEX NUT		0.13	0.52
5	4	G5802	5/8" x 2" HDG HEX BOLT GR5		0.27	1.09
6	4	G58FW	5/8" HDG USS FLATWASHER		0.07	0.28
7	4	G58LW	5/8" HDG LOCKWASHER		0.03	0.10
8	40	G12FW	1/2" HDG USS FLATWASHER		0.03	1.36
9	40	G12LW	1/2" HDG LOCKWASHER		0.01	0.56
10	40	G12NUT	1/2" HDG HEAVY 2H HEX NUT		0.07	2.86
11	16	G1204	1/2" x 4" HDG HEX BOLT GR5 FULL THREAD	4 in	0.27	4.32
11	16	G12065	1/2" x 6-1/2" HDG HEX BOLT GR5 FULL THREAD	6 1/2 in	0.41	6.55
12	2	X-DAC	DOUBLE ANTENNA MOUNT		5.36	10.72
13	6	SCP	4-1/16" CLAMP HALF, 1/2" THK.	6 11/32 in	1.25	7.50
14	12	G12R-6	1/2" x 6" THREADED ROD (HDG.)		3.23	38.73
					TOTAL WT. #	110.14

**TAPER NOTE:**  
THE MAXIMUM TAPER ADJUSTMENT IS 5.7° BASED UPON  
30" SPACING OF ADJUSTABLE MOUNTING BRACKETS.

THE MAXIMUM TAPER ADJUSTMENT IS 3.8° BASED UPON  
45" SPACING OF ADJUSTABLE MOUNTING BRACKET.

**TOLERANCE NOTES**

TOLERANCES ON DIMENSIONS, UNLESS OTHERWISE NOTED ARE:  
SAWED, SHEARED AND GAS CUT EDGES ( $\pm 0.030"$ )  
DRILLED AND GAS CUT HOLES ( $\pm 0.030"$ ) - NO CONING OF HOLES  
LASER CUT EDGES AND HOLES ( $\pm 0.010"$ ) - NO CONING OF HOLES  
BENDS ARE  $\pm 1/2$  DEGREE  
ALL OTHER MACHINING ( $\pm 0.030"$ )  
ALL OTHER ASSEMBLY ( $\pm 0.060"$ )

**PROPRIETARY NOTE:**  
THE DATA AND TECHNIQUES CONTAINED IN THIS DRAWING ARE PROPRIETARY INFORMATION OF VALMONT  
INDUSTRIES AND CONSIDERED A TRADE SECRET. ANY USE OR DISCLOSURE WITHOUT THE CONSENT OF  
VALMONT INDUSTRIES IS STRICTLY PROHIBITED.

DESCRIPTION

R5 UNIVERSAL PIPE MOUNT  
AND DOUBLE ANTENNA CLAMP

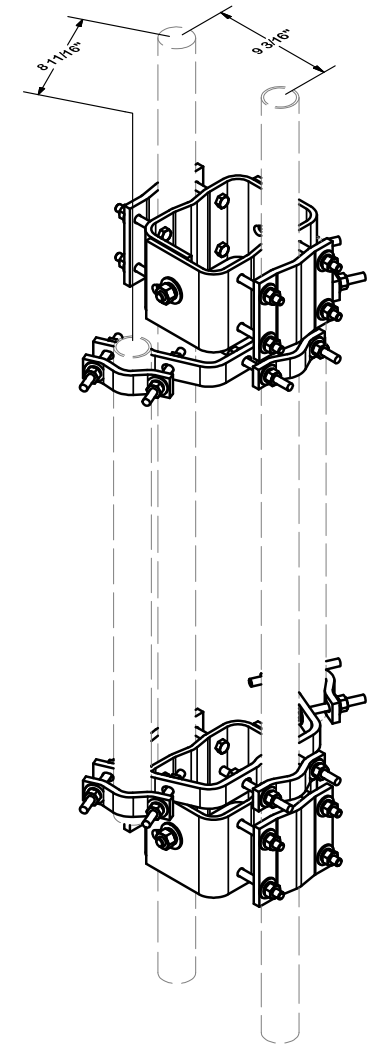
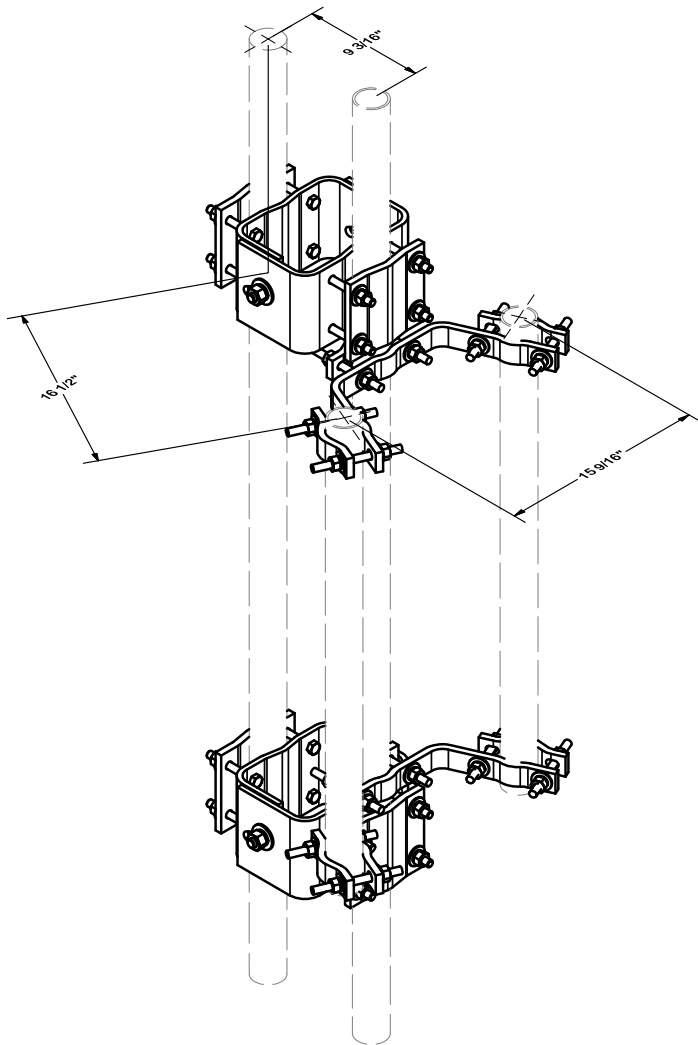
CPD NO.	DRAWN BY CEK	ENG. APPROVAL
CLASS 81	SUB 02	DRAWING USAGE CUSTOMER
	CHECKED BY BMC	2/4/2013



Engineering  
Support Team:  
1-888-753-7446

Locations:  
New York, NY  
Atlanta, GA  
Los Angeles, CA  
Plymouth, IN  
Salem, OR  
Dallas, TX

PART NO.	R5-DAC
DWG. NO.	R5-DAC



**TOLERANCE NOTES**

**TOLERANCES ON DIMENSIONS, UNLESS OTHERWISE NOTED ARE:  
 SAWED, SHEARED AND GAS CUT EDGES ( $\pm 0.030$ " )  
 DRILLED AND GAS CUT HOLES ( $\pm 0.030$ " ) - NO CONING OF HOLES  
 LASER CUT EDGES AND HOLES ( $\pm 0.010$ " ) - NO CONING OF HOLES  
 BENDS ARE  $\pm 1/2$  DEGREE  
 ALL OTHER MACHINING ( $\pm 0.030$ " )  
 ALL OTHER ASSEMBLY ( $\pm 0.060$ " )**

**PROPRIETARY NOTE:  
 THE DATA AND TECHNIQUES CONTAINED IN THIS DRAWING ARE PROPRIETARY INFORMATION OF VALMONT  
 INDUSTRIES AND CONSIDERED A TRADE SECRET. ANY USE OR DISCLOSURE WITHOUT THE CONSENT OF  
 VALMONT INDUSTRIES IS STRICTLY PROHIBITED.**

DESCRIPTION  
**R5 UNIVERSAL PIPE MOUNT  
 AND DOUBLE ANTENNA CLAMP**

CPD NO.	DRAWN BY	ENG. APPROVAL
CLASS	SUB	DRAWING USAGE
81	02	CUSTOMER
	CHECKED BY	
	BMC	2/4/2013

**SITE PRO 1**  
 A valmont COMPANY

Engineering Support Team:  
 1-888-753-7446

Locations:  
 New York, NY  
 Atlanta, GA  
 Los Angeles, CA  
 Plymouth, IN  
 Salem, OR  
 Dallas, TX

PART NO.	<b>R5-DAC</b>
DWG. NO.	<b>R5-DAC</b>