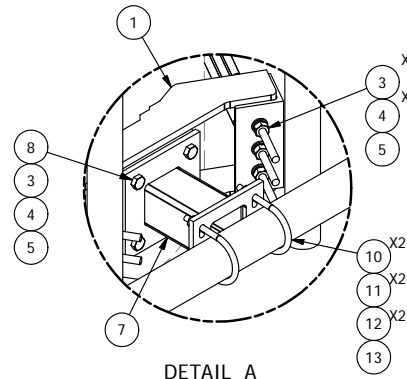
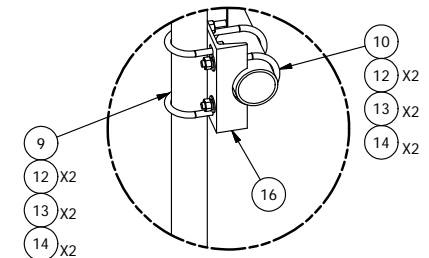


PARTS LIST						
ITEM	QTY	PART NO.	PART DESCRIPTION	LENGTH	UNIT WT.	NET WT.
1	3	X-LWRM	RING MOUNT WELDMENT		68.81	206.42
2	9	G58R-48	5/8" x 48" THREADED ROD (HDG.)		0.40	3.59
2	9	G58R-24	5/8" x 24" THREADED ROD (HDG.)		0.40	3.59
3	30	A58FW	5/8" HDG A325 FLATWASHER		0.03	1.02
4	30	G58LW	5/8" HDG LOCKWASHER		0.03	0.78
5	30	A58NUT	5/8" HDG A325 HEX NUT		0.13	3.90
6	3	P348	3-1/2" X 48" SCH 40 GALVANIZED PIPE	48	31.89	95.68
7	3	X-WWM01	8" STAND-OFF ARM / WALL MOUNT		18.12	54.37
8	12	A582112	5/8" x 2-1/2" HDG A325 HEX BOLT	2.5	0.33	4.01
9	12	X-UB1300	1/2" X 3" X 5" X 2" GALV U-BOLT		0.74	8.86
10	12	X-UB1306	1/2" X 3-5/8" X 6" X 3" GALV U-BOLT		0.83	9.94
11	6	X-UB1358	1/2" X 3-5/8" X 5-1/2" X 3" GALV U-BOLT		0.77	4.63
12	60	G12FW	1/2" HDG USS FLATWASHER		0.03	2.04
13	60	G12LW	1/2" HDG LOCKWASHER		0.01	0.83
14	60	G12NUT	1/2" HDG HEAVY 2H HEX NUT		0.07	4.30
15	6	B	C	D	E	F
16	6	X-SP219	SMALL SUPPORT CROSS PLATE	8.250 in	8.61	51.66

2-7/8" MOUNTING PIPES						
ASSEMBLY "A"	PART NO "B"	PART DESCRIPTION "C"	LENGTH "D"	UNIT WEIGHT "	NET WEIGHT "F"	TOTAL WEIGHT
RDS-23072	P3072	2 7/8" O.D. VERTICAL MOUNTING PIPE	72"	70.47#	422.82#	885.61#
RDS-23084	P3084	2 7/8" O.D. VERTICAL MOUNTING PIPE	84"	82.22#	493.32#	956.11#
RDS-23096	P3096	2 7/8" O.D. VERTICAL MOUNTING PIPE	96"	93.96#	563.76#	1026.55#



DETAIL A



DETAIL B

TOLERANCE NOTES

**TOLERANCES ON DIMENSIONS, UNLESS OTHERWISE NOTED ARE:
 SAWED, SHEARED AND GAS CUT EDGES ($\pm 0.030"$)
 DRILLED AND GAS CUT HOLES ($\pm 0.030"$) - NO CONING OF HOLES
 LASER CUT EDGES AND HOLES ($\pm 0.010"$) - NO CONING OF HOLES
 BENDS ARE $\pm 1/2$ DEGREE
 ALL OTHER MACHINING ($\pm 0.030"$)
 ALL OTHER ASSEMBLY ($\pm 0.060"$)**

PROPRIETARY NOTE:
 THE DATA AND TECHNIQUES CONTAINED IN THIS DRAWING ARE PROPRIETARY INFORMATION OF VALMONT INDUSTRIES AND CONSIDERED A TRADE SECRET. ANY USE OR DISCLOSURE WITHOUT THE CONSENT OF VALMONT INDUSTRIES IS STRICTLY PROHIBITED.

DESCRIPTION
**MONOPOLE
 DOUBLE SUPPORT
 ARM KIT**

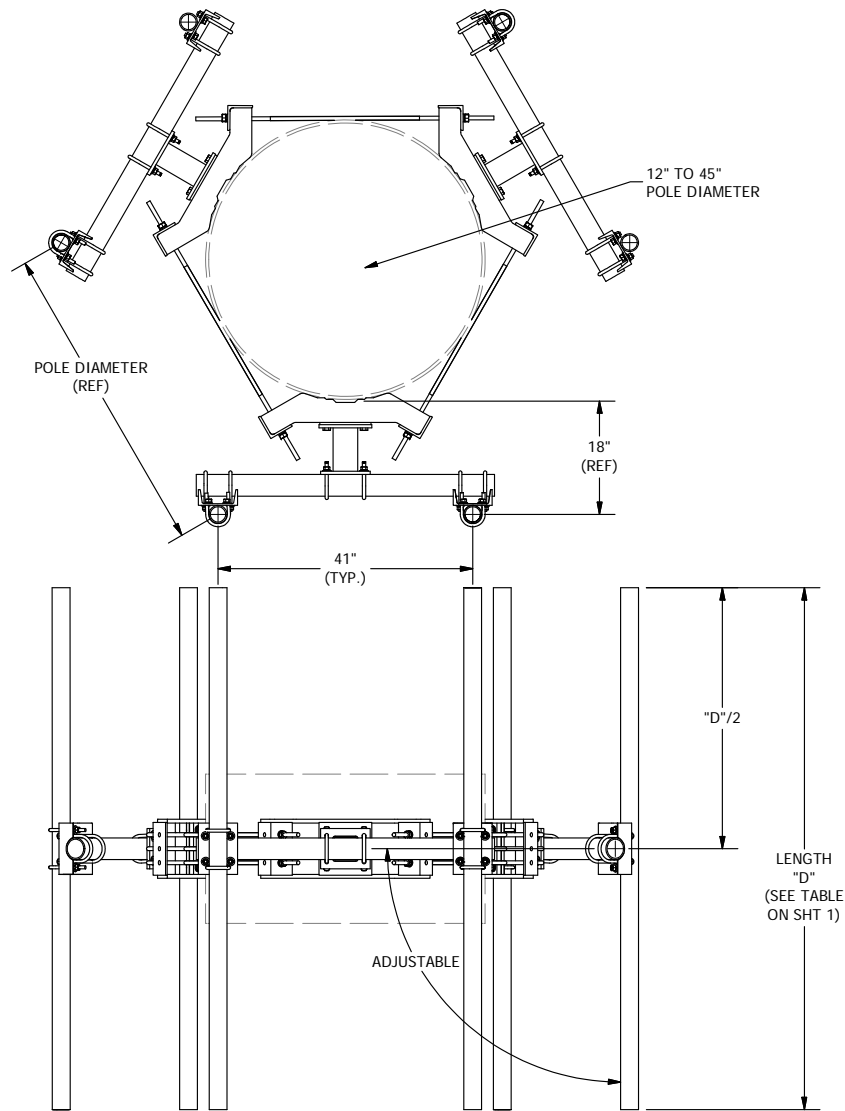
CPD NO. 4546	DRAWN BY CEK 6/30/2015	ENG. APPROVAL
CLASS 81	SUB 01	DRAWING USAGE CUSTOMER
CHECKED BY BMC 6/30/2015		

SITE PRO 1
 Engineering Support Team:
 1-888-753-7446

Locations:
 New York, NY
 Atlanta, GA
 Los Angeles, CA
 Plymouth, IN
 Salem, OR
 Dallas, TX

PART NO. RDS-23XX	1 OF 2
DWG. NO. RDS-23XX	


A	REDRAWN IN INV	KC8	5/22/2012
REV	DESCRIPTION OF REVISIONS	CPD	BY DATE
REVISION HISTORY			



TOLERANCE NOTES
TOLERANCES ON DIMENSIONS, UNLESS OTHERWISE NOTED ARE:
SAWED, SHEARED AND GAS CUT EDGES (± 0.030 ")
DRILLED AND GAS CUT HOLES (± 0.030 ") - NO CONING OF HOLES
LASER CUT EDGES AND HOLES (± 0.010 ") - NO CONING OF HOLES
BENDS ARE $\pm 1/2$ DEGREE
ALL OTHER MACHINING (± 0.030 ")
ALL OTHER ASSEMBLY (± 0.060 ")

PROPRIETARY NOTE:
 THE DATA AND TECHNIQUES CONTAINED IN THIS DRAWING ARE PROPRIETARY INFORMATION OF VALMONT INDUSTRIES AND CONSIDERED A TRADE SECRET. ANY USE OR DISCLOSURE WITHOUT THE CONSENT OF VALMONT INDUSTRIES IS STRICTLY PROHIBITED.

DESCRIPTION		MONOPOLE DOUBLE SUPPORT ARM KIT	
CPD NO.	DRAWN BY	ENG. APPROVAL	
4546	CEK	6/30/2015	
CLASS	SUB	DRAWING USAGE	CHECKED BY
81	01	CUSTOMER	BMC 6/30/2015

 A valmont COMPANY	Locations: New York, NY Atlanta, GA Los Angeles, CA Plymouth, IN Salem, OR Dallas, TX
	Engineering Support Team: 1-888-753-7446
PART NO.	RDS-23XX
DWG. NO.	RDS-23XX

A	REDRAWN IN INV	CPD	KC8	5/22/2012
REV	DESCRIPTION OF REVISIONS	CPD	BY	DATE
REVISION HISTORY				