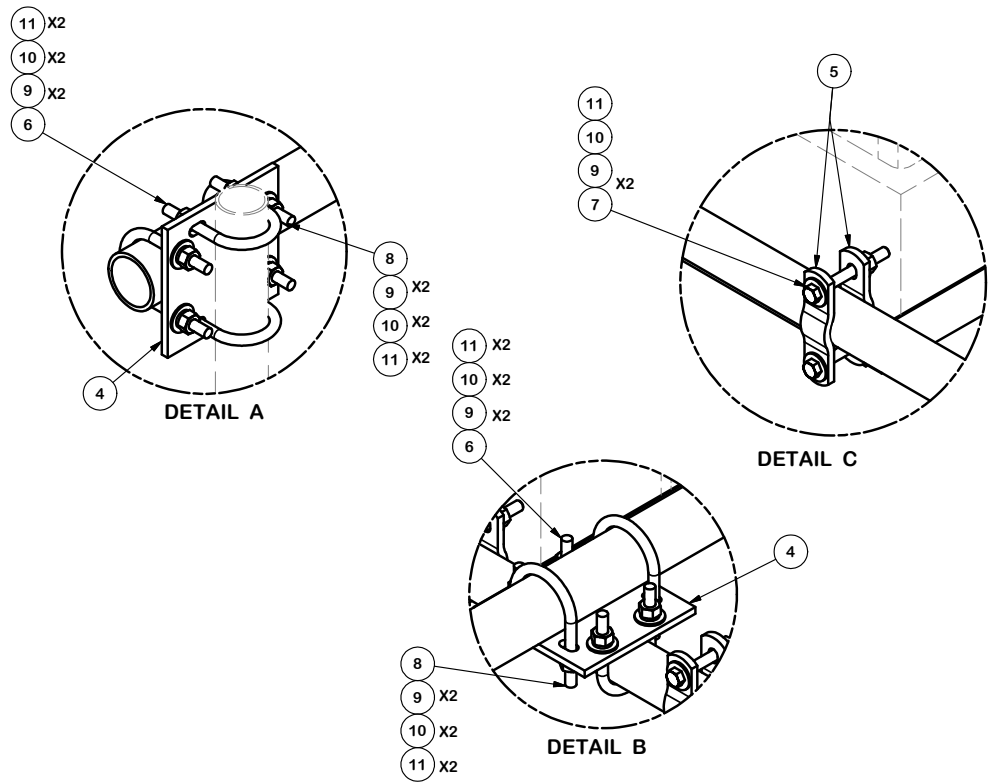
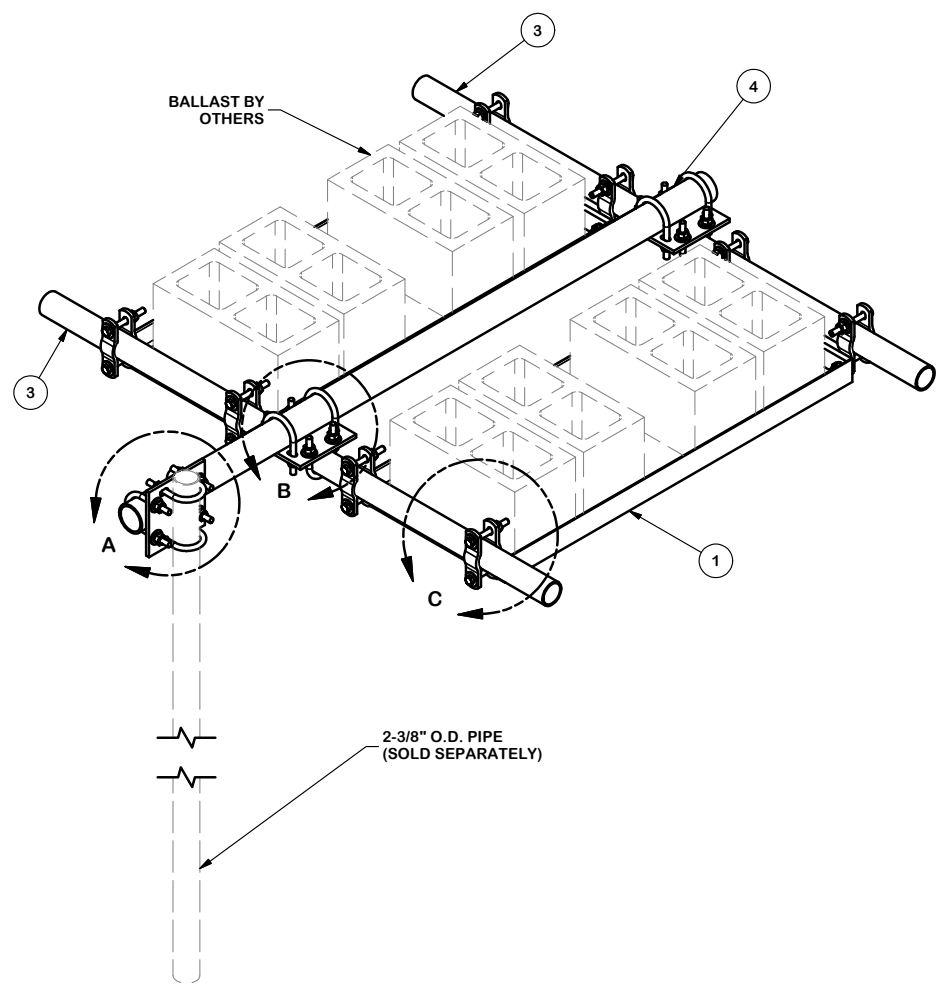


| PARTS LIST | | | | | | |
|------------|-----|----------|--|----------|-------------|---------|
| ITEM | QTY | PART NO. | PART DESCRIPTION | LENGTH | UNIT WT. | NET WT. |
| 1 | 2 | X-251012 | BALLAST TRAY WELDMENT - SITE PRO 1 | | 36.46 | 72.92 |
| 2 | 1 | P3072 | 2 1/2" SCH. 40 PIPE (2.875" O.D. x 0.203" WALL) A500 | 72 in | 34.84 | 34.84 |
| 3 | 2 | P263 | 2-3/8" X 63" SCH 40 GALVANIZED PIPE | 63 in | 20.18 | 40.37 |
| 4 | 3 | SCX2 | CROSSOVER PLATE | 7 in | 4.80 | 14.39 |
| 5 | 16 | X-100064 | CLAMP (S) (4" V-CLAMP) GALVANIZED | | 0.91 | 14.61 |
| 6 | 6 | X-UB1212 | 1/2" X 2-1/2" X 4-1/2" X 2" U-BOLT (HDG.) | | 0.26 | 1.54 |
| 7 | 16 | G12045 | 1/2" x 4.5" HDG HEX BOLT GR5 FULL THREAD | 4 1/2 in | 0.30 | 4.77 |
| 8 | 6 | X-UB1300 | 1/2" X 3" X 5" X 2" U-BOLT (HDG.) | | 0.26 | 1.54 |
| 9 | 48 | G12FW | 1/2" HDG USS FLATWASHER | | 0.03 | 1.64 |
| 10 | 40 | G12LW | 1/2" HDG LOCKWASHER | | 0.01 | 0.56 |
| 11 | 40 | G12NUT | 1/2" HDG HEAVY 2H HEX NUT | | 0.07 | 2.87 |
| | | | | | TOTAL WT. # | 194.87 |



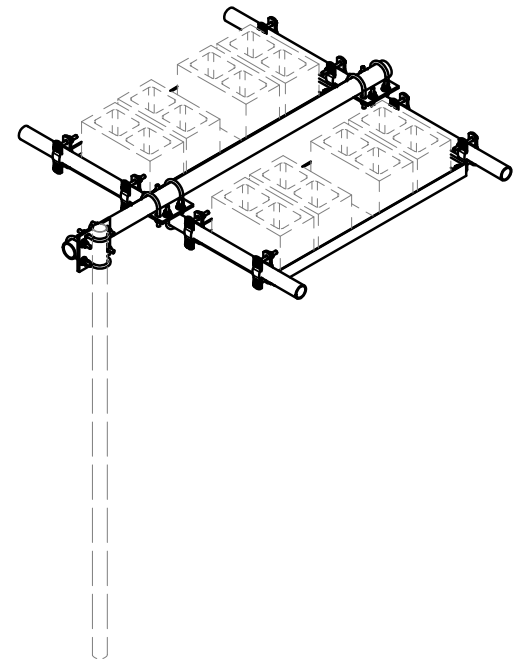
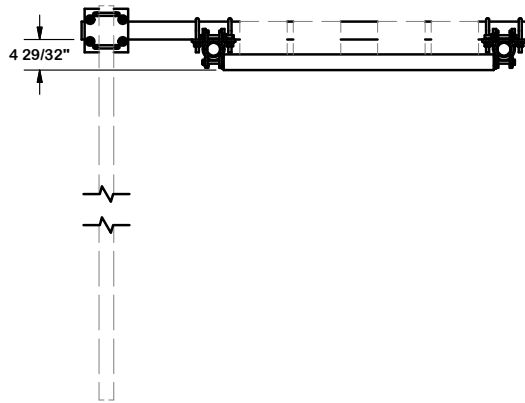
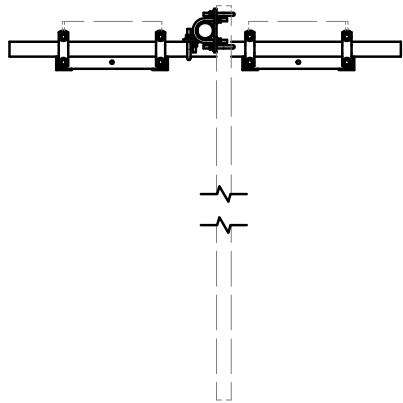
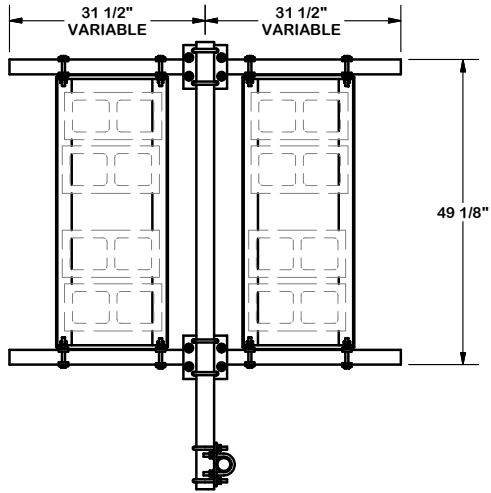
TOLERANCE NOTES

TOLERANCES ON DIMENSIONS, UNLESS OTHERWISE NOTED ARE:
 SAWED, SHEARED AND GAS CUT EDGES ($\pm 0.030"$)
 DRILLED AND GAS CUT HOLES ($\pm 0.030"$) - NO CONING OF HOLES
 LASER CUT EDGES AND HOLES ($\pm 0.010"$) - NO CONING OF HOLES
 BENDS ARE $\pm 1/2$ DEGREE
 ALL OTHER MACHINING ($\pm 0.030"$)
 ALL OTHER ASSEMBLY ($\pm 0.060"$)

PROPRIETARY NOTE:
 THE DATA AND TECHNIQUES CONTAINED IN THIS DRAWING ARE PROPRIETARY INFORMATION OF VALMONT INDUSTRIES AND CONSIDERED A TRADE SECRET. ANY USE OR DISCLOSURE WITHOUT THE CONSENT OF VALMONT INDUSTRIES IS STRICTLY PROHIBITED.

| | | | |
|-------------|---------------|--|---------------|
| DESCRIPTION | | ROOFTOP FLUSHMOUNT OVERHANG SMALL TRAY | |
| CPD NO. | DRAWN BY | ENG. APPROVAL | |
| | CEK 8/18/2014 | | |
| CLASS | SUB | DRAWING USAGE | CHECKED BY |
| 81 | 02 | CUSTOMER | BMC 1/16/2015 |

| | | |
|-----------------------|---|---|
| A valmont COMPANY | Engineering Support Team: 1-888-753-7446 | Locations: New York, NY Atlanta, GA Los Angeles, CA Plymouth, IN Salem, OR Dallas, TX |
| | PART NO. RFO-S DWG. NO. RFO-S | PAGE 1 OF 3 |



TOLERANCE NOTES

**TOLERANCES ON DIMENSIONS, UNLESS OTHERWISE NOTED ARE:
 SAWED, SHEARED AND GAS CUT EDGES (± 0.030 ")
 DRILLED AND GAS CUT HOLES (± 0.030 ") - NO CONING OF HOLES
 LASER CUT EDGES AND HOLES (± 0.010 ") - NO CONING OF HOLES
 BENDS ARE $\pm 1/2$ DEGREE
 ALL OTHER MACHINING (± 0.030 ")
 ALL OTHER ASSEMBLY (± 0.060 ")**

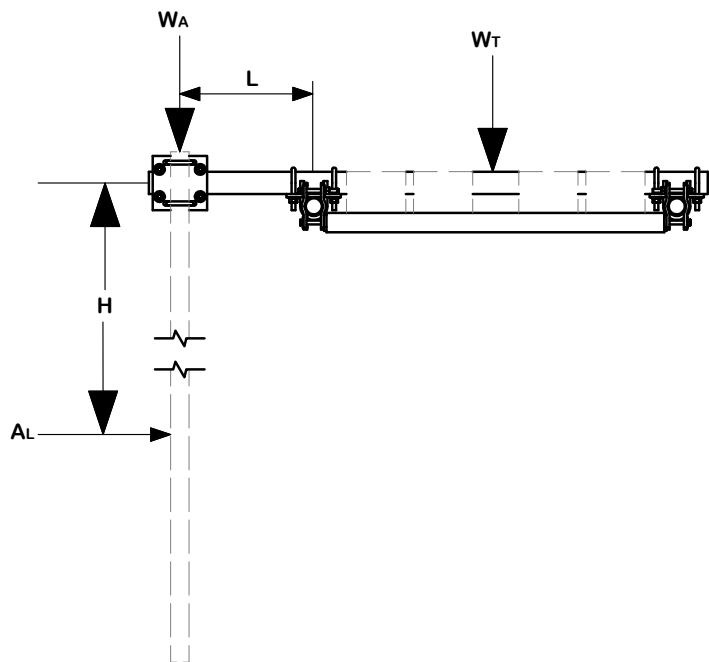
**PROPRIETARY NOTE:
 THE DATA AND TECHNIQUES CONTAINED IN THIS DRAWING ARE PROPRIETARY INFORMATION OF VALMONT
 INDUSTRIES AND CONSIDERED A TRADE SECRET. ANY USE OR DISCLOSURE WITHOUT THE CONSENT OF
 VALMONT INDUSTRIES IS STRICTLY PROHIBITED.**

DESCRIPTION
**ROOFTOP FLUSHMOUNT
 OVERHANG SMALL TRAY**

SITE PRO 1
 Engineering Support Team:
 1-888-753-7446
 Locations:
 New York, NY
 Atlanta, GA
 Los Angeles, CA
 Plymouth, IN
 Salem, OR
 Dallas, TX

| | | |
|---------|---------------|---------------|
| CPD NO. | DRAWN BY | ENG. APPROVAL |
| CLASS | DRAWING USAGE | CHECKED BY |
| 81 | CUSTOMER | BMC 1/16/2015 |

| | |
|----------|-------|
| PART NO. | RFO-S |
| DWG. NO. | RFO-S |



$$W_T = \frac{(A_L * H) + (W_A * L)}{1.875}$$

$$W = W_T / 2$$

TOLERANCE NOTES

TOLERANCES ON DIMENSIONS, UNLESS OTHERWISE NOTED ARE:
SAWED, SHEARED AND GAS CUT EDGES ($\pm 0.030"$)
DRILLED AND GAS CUT HOLES ($\pm 0.030"$) - NO CONING OF HOLES
LASER CUT EDGES AND HOLES ($\pm 0.010"$) - NO CONING OF HOLES
BENDS ARE $\pm 1/2$ DEGREE
ALL OTHER MACHINING ($\pm 0.030"$)
ALL OTHER ASSEMBLY ($\pm 0.060"$)

PROPRIETARY NOTE:
 THE DATA AND TECHNIQUES CONTAINED IN THIS DRAWING ARE PROPRIETARY INFORMATION OF VALMONT INDUSTRIES AND CONSIDERED A TRADE SECRET. ANY USE OR DISCLOSURE WITHOUT THE CONSENT OF VALMONT INDUSTRIES IS STRICTLY PROHIBITED.

DESCRIPTION
**ROOFTOP FLUSHMOUNT
 OVERHANG SMALL TRAY**

SITE PRO 1
 A valmont COMPANY

Engineering Support Team:
 1-888-753-7446

Locations:
 New York, NY
 Atlanta, GA
 Los Angeles, CA
 Plymouth, IN
 Salem, OR
 Dallas, TX

| | | |
|------------------------------------|----------------------------------|----------------------------------|
| CPD NO. | DRAWN BY CEK 8/18/2014 | ENG. APPROVAL |
| CLASS 81 | SUB 02 | DRAWING USAGE CUSTOMER |
| CHECKED BY BMC 1/16/2015 | | |

| | |
|--------------------------|-----------------------|
| PART NO. RFO-S | PAGE 3 OF 3 |
| DWG. NO. RFO-S | |