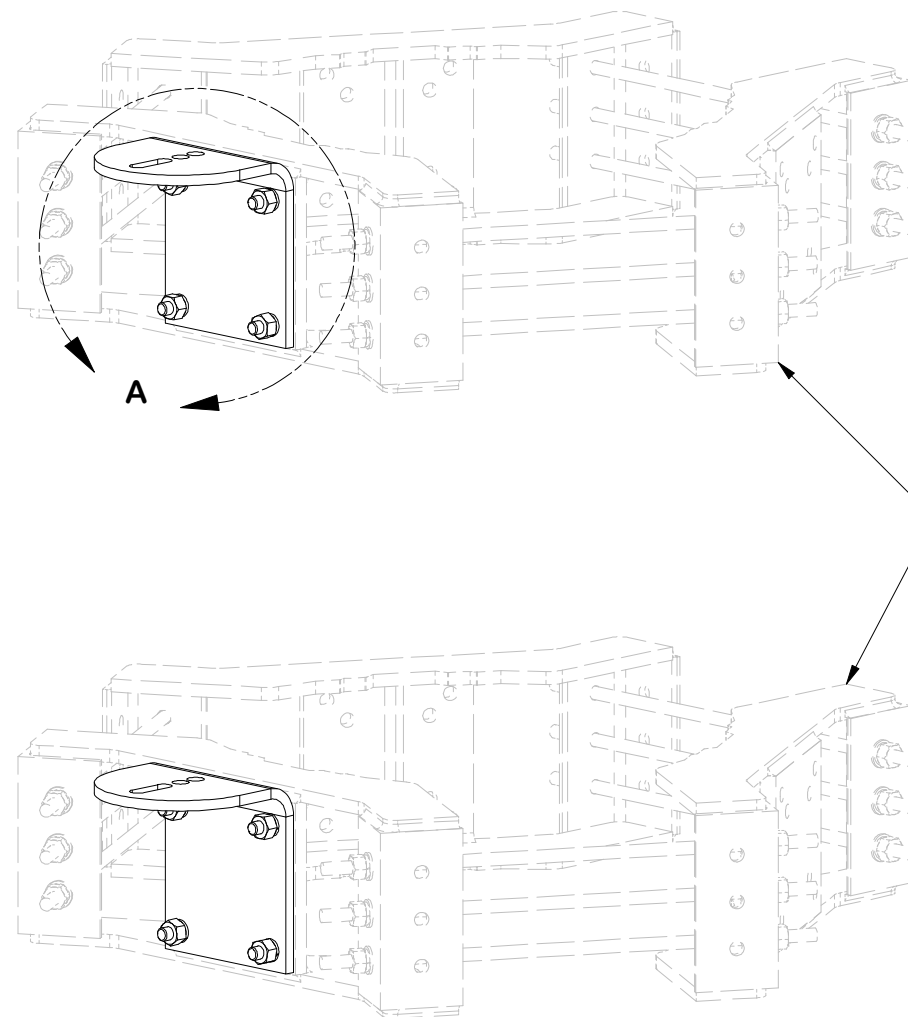


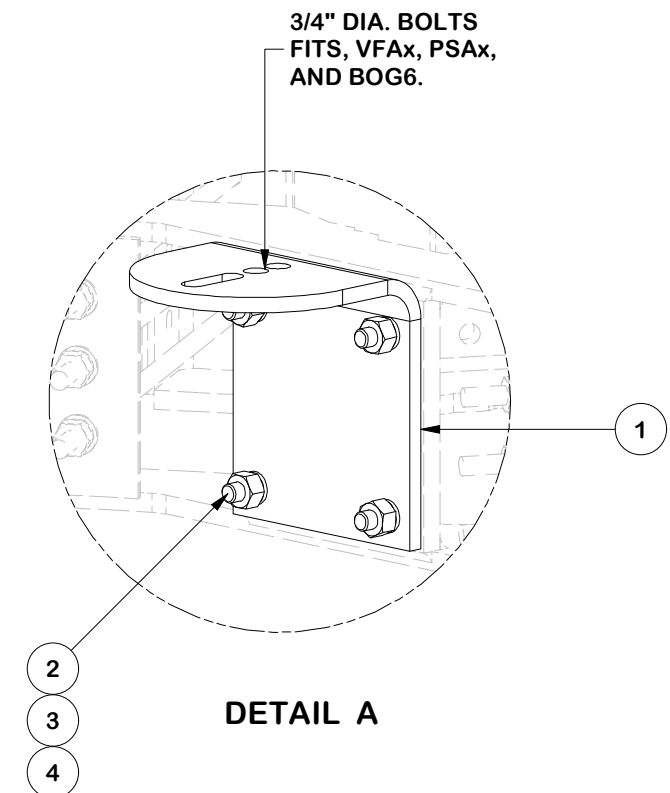
PARTS LIST						
ITEM	QTY	PART NO.	PART DESCRIPTION	LENGTH	UNIT WT.	NET WT.
1	2	X-RMBP	RING MOUNT BENT PLATE CONNECTION	15 1/2 in	17.02	34.04
2	8	A582112	5/8" x 2-1/2" HDG A325 HEX BOLT	2 1/2 in	0.33	2.67
3	8	G58LW	5/8" HDG LOCKWASHER		0.03	0.21
4	8	G58NUT	5/8" HDG HEAVY 2H HEX NUT		0.13	1.04
					TOTAL WT. #	37.96




**RING MOUNTS
SOLD SEPARATELY**

**WORKS WITH
ANY RING MOUNT
— WITH 5/8" BOLTS
ON A 6" X 6" BOLT
PATTERN**

**USE A5802 FOR UGLM
AND UGLM4 CONNECTION**



					<div>TOLERANCE NOTES</div> <div>TOLERANCES ON DIMENSIONS, UNLESS OTHERWISE NOTED ARE: SAWED, SHEARED AND GAS CUT EDGES ($\pm 0.030''$) DRILLED AND GAS CUT HOLES ($\pm 0.030''$) - NO CONING OF HOLES LASER CUT EDGES AND HOLES ($\pm 0.010''$) - NO CONING OF HOLES BENDS ARE $\pm 1/2$ DEGREE ALL OTHER MACHINING ($\pm 0.030''$) ALL OTHER ASSEMBLY ($\pm 0.060''$)</div> <div>PROPRIETARY NOTE: THE DATA AND TECHNIQUES CONTAINED IN THIS DRAWING ARE PROPRIETARY INFORMATION OF VALMONT INDUSTRIES AND CONSIDERED A TRADE SECRET. ANY USE OR DISCLOSURE WITHOUT THE CONSENT OF VALMONT INDUSTRIES IS STRICTLY PROHIBITED.</div>		<div>DESCRIPTION</div> <div>SINGLE-SECTOR MONOPOLE DIRECT FRAME CONNECT KIT</div>				<div><div><div>SITE PRO 1</div><div>Engineering Support Team: 1-888-753-7446</div></div><div>Locations: New York, NY Atlanta, GA Los Angeles, CA Plymouth, IN Salem, OR Dallas, TX</div></div> <div>A valmont  COMPANY</div>				
B	UPDATED PART# FROM MDFC-K TO RMBP			SP1	CSL	7/19/2023	CPD NO. SP1		DRAWN BY CEK 9/29/2016		ENG. APPROVAL		PART NO. RMBP		1 OF 1 PAGE
A	REPLACED X-RMBPTC & X-RMBPBC WITH X-RMBP			SP1	CEK	6/13/2019							RMBP		
REV	DESCRIPTION OF REVISIONS			CPD	BY	DATE	CLASS 87	SUB 02	DRAWING USAGE CUSTOMER		CHECKED BY BMC 9/29/2016		DWG. NO. RMBP		
REVISION HISTORY															