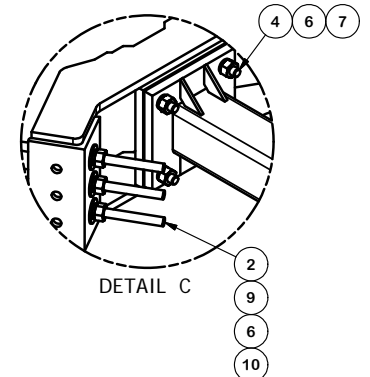
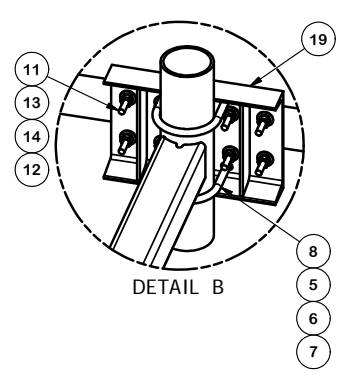


PARTS LIST						
ITEM	QTY	PART NO.	PART DESCRIPTION	LENGTH	UNIT WT.	NET WT.
1	3	X-LWRM	RING MOUNT WELDMENT		68.81	206.42
2	9	G58R-24	5/8" x 24" THREADED ROD (HDG.)		0.40	3.59
2	9	G58R-48	5/8" X 48" GALV THREADED ROD		4.39	39.52
3	3	X-SV197-36	SUPPORT ARM WELDMENT - 36"		67.29	201.88
4	12	A58234	5/8" x 2-3/4" HDG A325 HEX BOLT	2.75	0.36	4.27
5	12	A58FW	5/8" HDG A325 FLATWASHER		0.03	0.41
6	42	G58LW	5/8" HDG LOCKWASHER		0.03	1.10
7	24	A58NUT	5/8" HDG A325 HEX NUT		0.13	3.12
8	6	X-UB5458	5/8" X 4-5/8" X 7" X 3" U-BOLT (HDG.)		0.26	1.54
9	18	G58FW	5/8" HDG USS FLATWASHER		0.07	1.27
10	18	G58NUT	5/8" HDG HEAVY 2H HEX NUT		0.13	2.34
11	36	X-UB1306	1/2" X 3-5/8" X 6" X 3" U-BOLT (HDG.)		0.26	9.25
12	114	G12NUT	1/2" HDG HEAVY 2H HEX NUT		0.07	8.17
13	114	G12FW	1/2" HDG USS FLATWASHER		0.03	3.89
14	114	G12LW	1/2" HDG LOCKWASHER		0.01	1.59
15	24	X-UB1212	1/2" X 2-1/2" X 4-1/2" X 2" U-BOLT (HDG.)		0.26	6.17
16	3	P3150	3-1/2" X 150" SCH 40 GALVANIZED PIPE	150.000 in	94.80	284.40
17	12	A	B	C	D	
18	12	X-SP219	SMALL SUPPORT CROSS PLATE	8.250 in	8.61	103.33
19	3	X-SP216	LARGE SUPPORT CROSS PLATE		20.83	62.48



ANTENNA PIPES					
"ASSEMBLY NO."	PART NO. "A"	PART DESCRIPTION "B"	LENGTH "C"	UNIT WT. "D"	TOTAL WT.
RMV12-463	P263	2-3/8" O.D. SCH. 40 PIPE	63"	19.22	1,219.29
RMV12-472	P272	2-3/8" O.D. SCH. 40 PIPE	72"	23.07	1,265.49
RMV12-484	P284	2-3/8" O.D. SCH. 40 PIPE	84"	26.91	1,311.57
RMV12-496	P296	2-3/8" O.D. SCH. 40 PIPE	96"	30.76	1,357.77
RMV12-4126	P126	2-3/8" O.D. SCH. 40 PIPE	126"	40.76	1477.77

RE	DESCRIPTION OF REVISIONS	CPD	BY	DATE
B	ADDED 10' 6" ANTENNA MOUNTING PIPES	4516	CEK	7/2/2015
A	REMOVED FLATWASH. AT ARM TO CLAMP RING CONNECTION	4516	CEK	11/4/2011

REVISION HISTORY

TOLERANCE NOTES

TOLERANCES ON DIMENSIONS, UNLESS OTHERWISE NOTED ARE:
 SAWED, SHEARED AND GAS CUT EDGES ($\pm 0.030"$)
 DRILLED AND GAS CUT HOLES ($\pm 0.030"$) - NO CONING OF HOLES
 LASER CUT EDGES AND HOLES ($\pm 0.010"$) - NO CONING OF HOLES
 BENDS ARE $\pm 1/2$ DEGREE
 ALL OTHER MACHINING ($\pm 0.030"$)
 ALL OTHER ASSEMBLY ($\pm 0.060"$)

PROPRIETARY NOTE:
 THE DATA AND TECHNIQUES CONTAINED IN THIS DRAWING ARE PROPRIETARY INFORMATION OF VALMONT INDUSTRIES AND CONSIDERED A TRADE SECRET. ANY USE OR DISCLOSURE WITHOUT THE CONSENT OF VALMONT INDUSTRIES IS STRICTLY PROHIBITED.

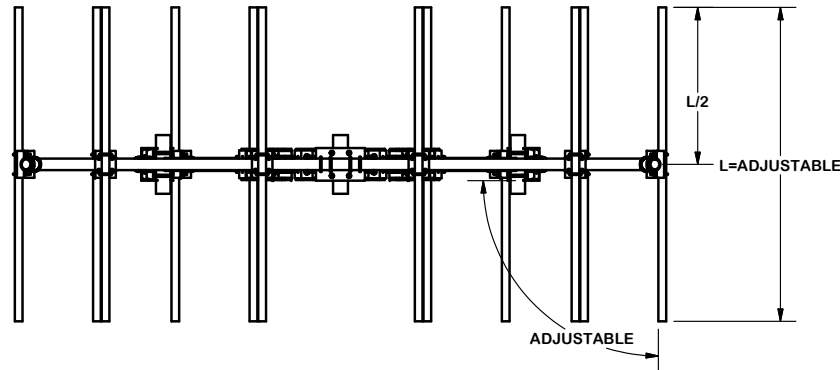
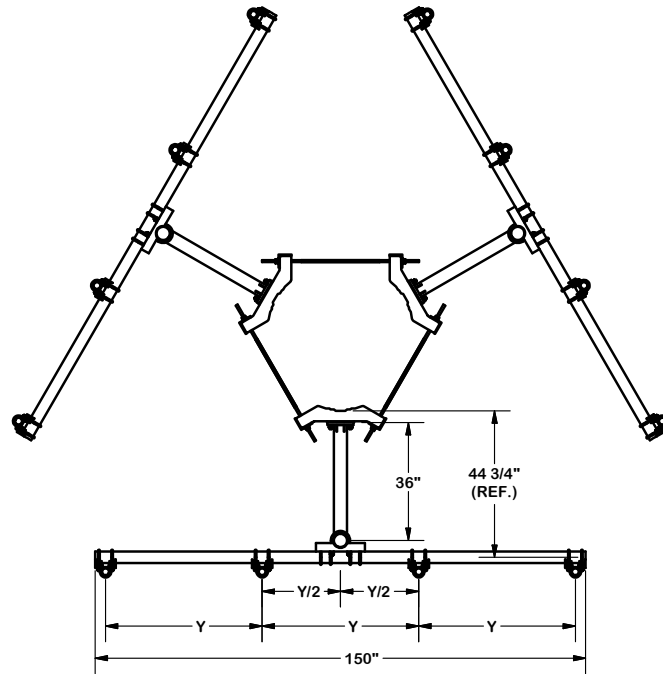
DESCRIPTION		
MONOPOLE TRIPLE T-ARM FOR 12 ANTENNAS		
CPD NO.	DRAWN BY	ENG. APPROVAL
4516	CEK 4/15/2011	
CLASS	SUB	DRAWING USAGE
81	01	CUSTOMER
		CHECKED BY
		BMC 7/2/2015

A valmont COMPANY

Locations:
 New York, NY
 Atlanta, GA
 Los Angeles, CA
 Plymouth, IN
 Salem, OR
 Dallas, TX

Engineering Support Team:
 1-888-753-7446

PART NO.	SEE "ASSEMBLY NO."	PAGE
DWG. NO.	RMV12-4XX	1 OF 2



TOLERANCE NOTES

TOLERANCES ON DIMENSIONS, UNLESS OTHERWISE NOTED ARE:
 SAWED, SHEARED AND GAS CUT EDGES ($\pm 0.030"$)
 DRILLED AND GAS CUT HOLES ($\pm 0.030"$) - NO CONING OF HOLES
 LASER CUT EDGES AND HOLES ($\pm 0.010"$) - NO CONING OF HOLES
 BENDS ARE $\pm 1/2$ DEGREE
 ALL OTHER MACHINING ($\pm 0.030"$)
 ALL OTHER ASSEMBLY ($\pm 0.060"$)

PROPRIETARY NOTE:
 THE DATA AND TECHNIQUES CONTAINED IN THIS DRAWING ARE PROPRIETARY INFORMATION OF VALMONT INDUSTRIES AND CONSIDERED A TRADE SECRET. ANY USE OR DISCLOSURE WITHOUT THE CONSENT OF VALMONT INDUSTRIES IS STRICTLY PROHIBITED.

DESCRIPTION

MONOPOLE TRIPLE T-ARM
 FOR 12 ANTENNAS



Engineering
 Support Team:
 1-888-753-7446

Locations:
 New York, NY
 Atlanta, GA
 Los Angeles, CA
 Plymouth, IN
 Salem, OR
 Dallas, TX

A valmont COMPANY

REVISION	DESCRIPTION OF REVISIONS	CPD	BY	DATE
B	ADDED 10' 6" ANTENNA MOUNTING PIPES	4516	CEK	7/2/2015
A	REMOVED FLATWASH. AT ARM TO CLAMP RING CONNECTION	4516	CEK	11/4/2011
RE	REVISION HISTORY			

CPD NO.	DRAWN BY	ENG. APPROVAL
4516	CEK 4/15/2011	
CLASS	SUB	DRAWING USAGE
81	01	CUSTOMER
CHECKED BY	DATE	
BMC	7/2/2015	

PART NO.	DWG. NO.
SEE "ASSEMBLY NO."	RMV12-4XX