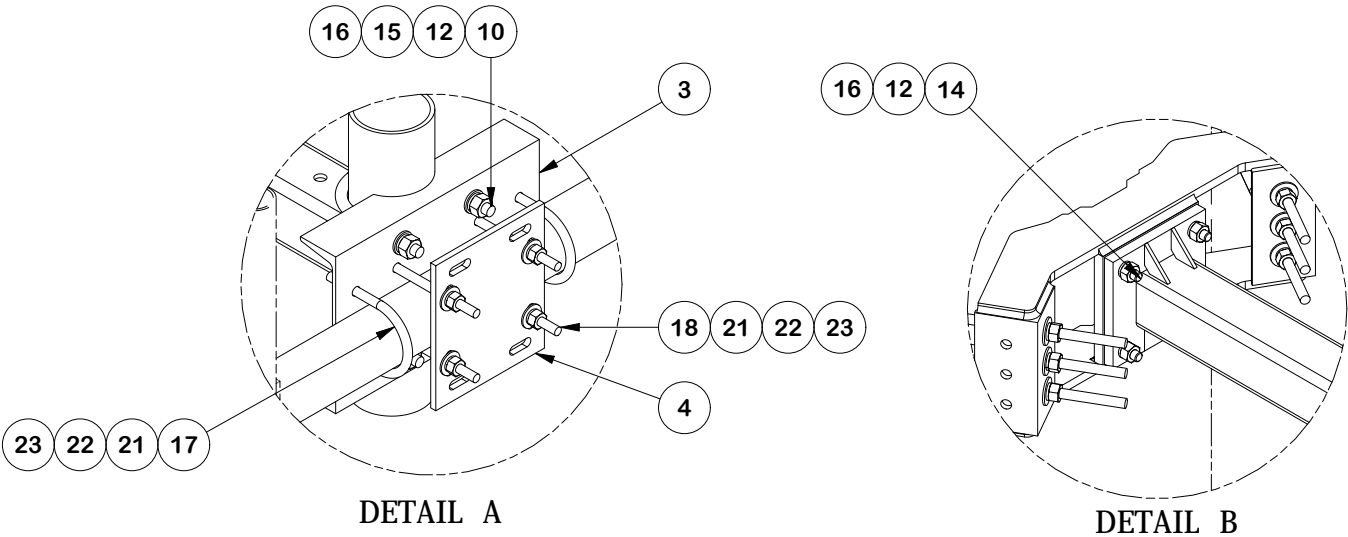
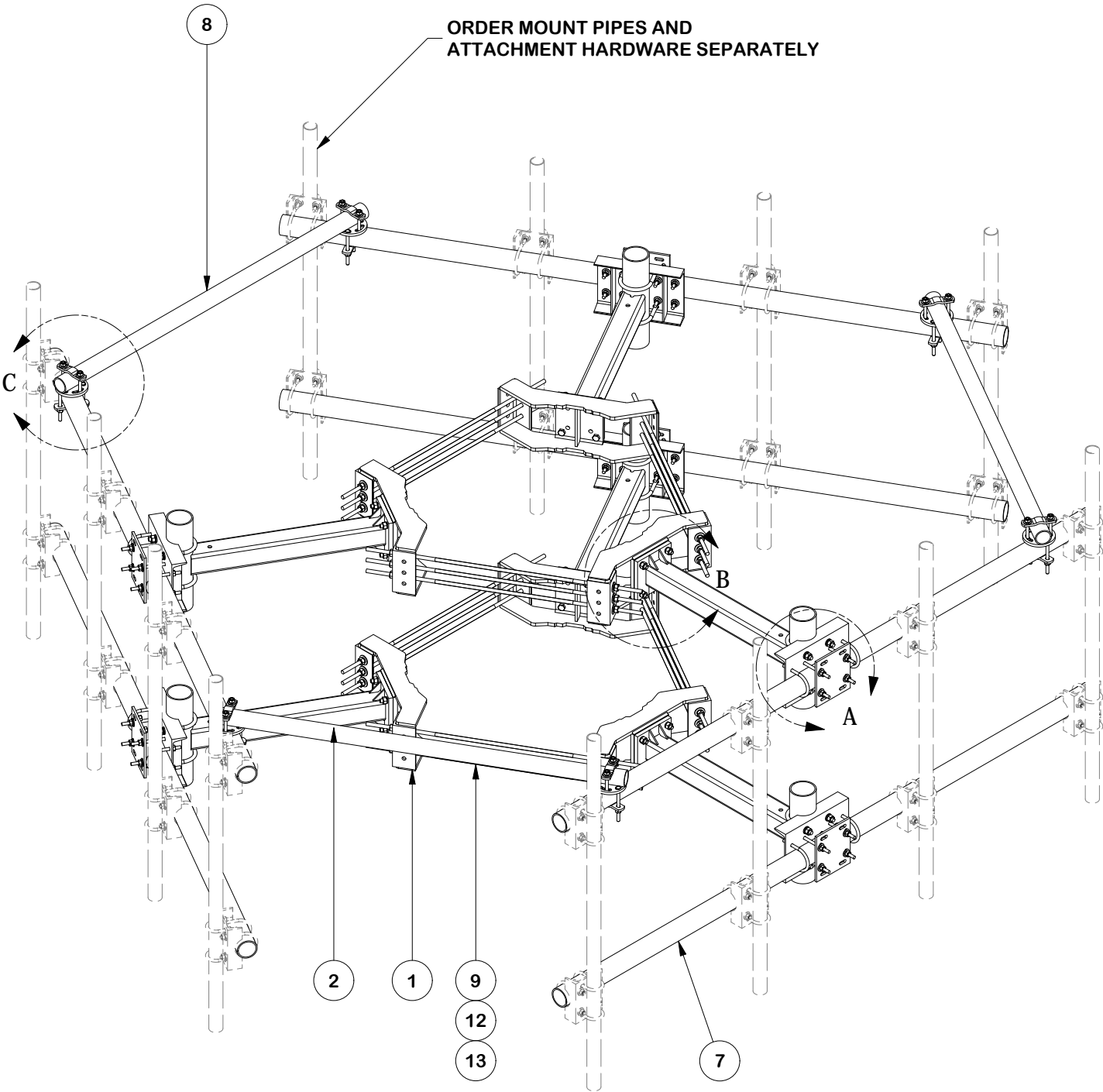


PARTS LIST						
ITEM	QTY	PART NO.	PART DESCRIPTION	LENGTH	UNIT WT.	NET WT.
1	6	X-LWRM	RING MOUNT WELDMENT		68.81	412.85
2	6	X-SV197-36	SUPPORT ARM WELDMENT - 36"		67.93	407.60
3	6	X-SP216	LARGE SUPPORT CROSS PLATE		22.08	132.46
4	6	SCX3	CROSSOVER PLATE	9.250 in	7.19	43.13
5	12	X-100064	CLAMP (4" V-CLAMP) GALVANIZED		0.92	11.06
6	6	X-127594	FLAT DISK CLAMP PLATE 4" CENTERS (GALV.)		2.51	15.04
7	6	P3126	3" SCH. 40 PIPE (3.5" O.D. x 0.216" WALL) A500	126.000 in	79.73	478.39
8	3	P3072	2 1/2" SCH. 40 PIPE (2.875" O.D. x 0.203" WALL) A500	72.000 in	34.84	104.52
9	18	G58R-24	5/8" x 24" THREADED ROD (HDG.)		2.09	37.63
9	18	G58R-48	5/8" X 48" GALV THREADED ROD		4.39	79.03
10	12	X-UB5458	5/8" X 4-5/8" X 7" X 3" U-BOLT (HDG.)		1.54	18.42
11	36	G58FW	5/8" HDG USS FLATWASHER	.122	0.07	2.54
12	84	G58LW	5/8" HDG LOCKWASHER		0.03	2.19
13	36	G58NUT	5/8" HDG HEAVY 2H HEX NUT		0.13	4.68
14	24	A58234	5/8" x 2-3/4" HDG A325 HEX BOLT	2.75	0.36	8.54
15	24	A58FW	5/8" HDG A325 FLATWASHER		0.03	0.82
16	48	A58NUT	5/8" HDG A325 HEX NUT		0.13	6.23
17	12	X-UB1358	1/2" X 3-5/8" X 5-1/2" X 3" U-BOLT (HDG.)		0.77	9.27
18	24	G12R-8	1/2" x 8" THREADED ROD (HDG.)		0.45	10.71
19	12	G12065	1/2" x 6-1/2" HDG HEX BOLT GR5 FULL THREAD	6-1/2	0.41	4.91
20	12	G1204	1/2" x 4" HDG HEX BOLT GR5 FULL THREAD	4	0.27	3.24
21	108	G12FW	1/2" HDG USS FLATWASHER	0.095	0.03	3.68
22	108	G12LW	1/2" HDG LOCKWASHER	.125	0.01	1.50
23	108	G12NUT	1/2" HDG HEAVY 2H HEX NUT		0.07	7.74
TOTAL WT. #					1806.19	



**TOLERANCE NOTES**

TOLERANCES ON DIMENSIONS, UNLESS OTHERWISE NOTED ARE:  
SAWED, SHEARED AND GAS CUT EDGES ( $\pm 0.030''$ )  
DRILLED AND GAS CUT HOLES ( $\pm 0.030''$ ) - NO CONING OF HOLES  
LASER CUT EDGES AND HOLES ( $\pm 0.010''$ ) - NO CONING OF HOLES  
BENDS ARE  $\pm 1/2$  DEGREE  
ALL OTHER MACHINING ( $\pm 0.030''$ )  
ALL OTHER ASSEMBLY ( $\pm 0.060''$ )

PROPRIETARY NOTE:  
THE DATA AND TECHNIQUES CONTAINED IN THIS DRAWING ARE PROPRIETARY INFORMATION OF VALMONT INDUSTRIES AND CONSIDERED A TRADE SECRET. ANY USE OR DISCLOSURE WITHOUT THE CONSENT OF VALMONT INDUSTRIES IS STRICTLY PROHIBITED.

DESCRIPTION  
**10'-6" DOUBLE MONOPOLE  
TRIPLE T-ARM 12"-45"  
NO MOUNT PIPES OR HARDWARE**

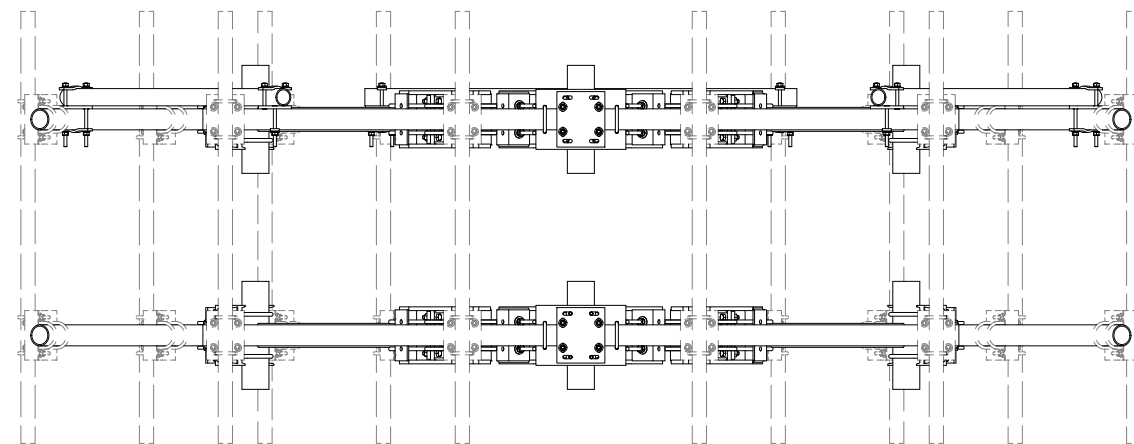
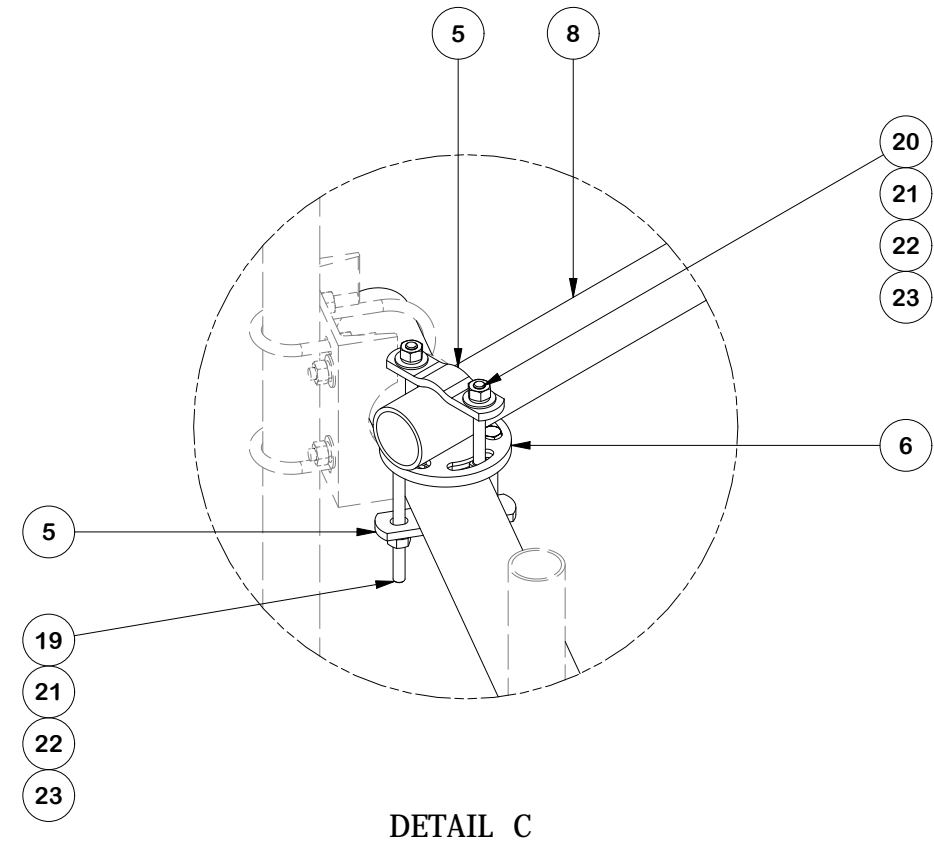
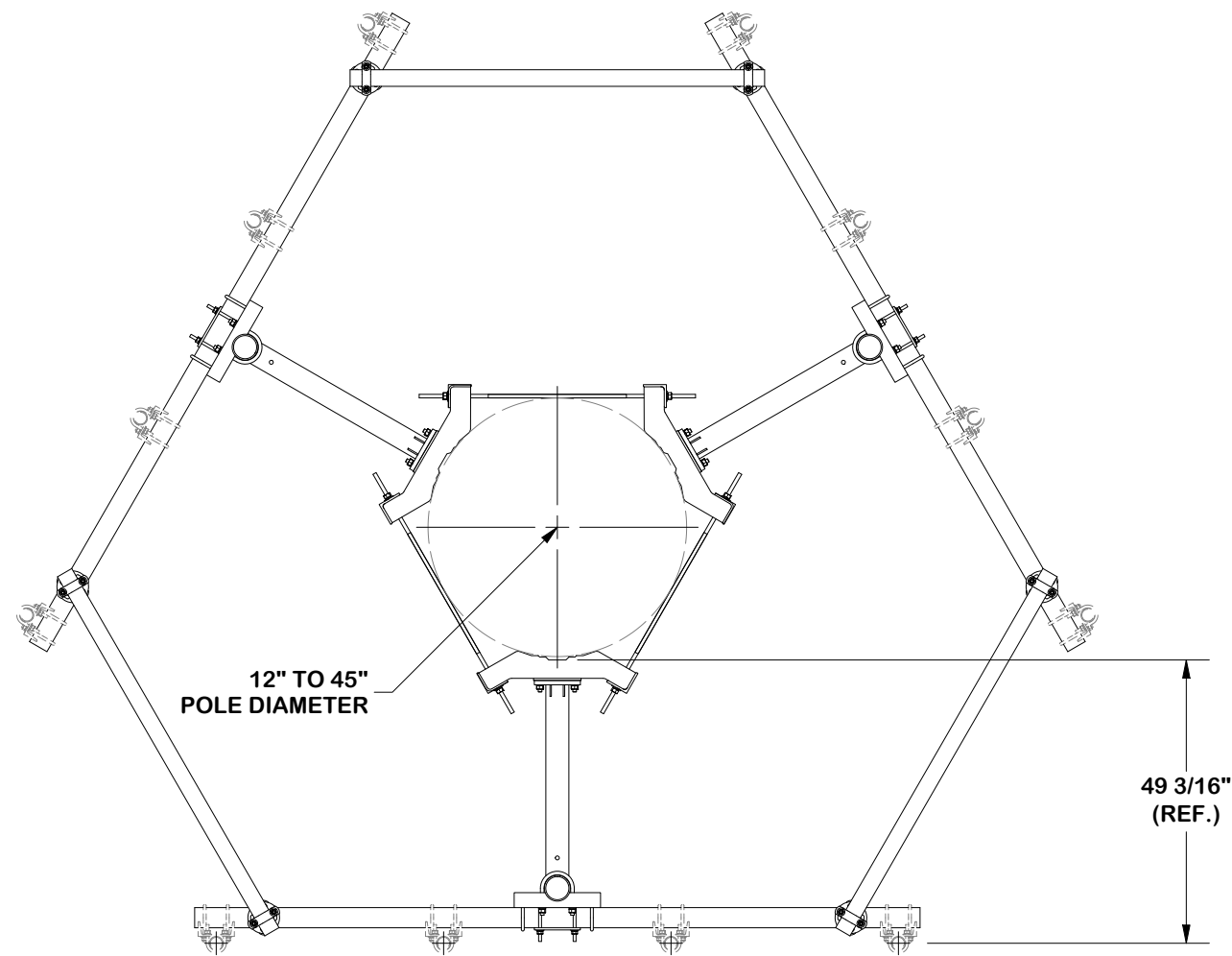
CPD NO.		DRAWN BY <b>CMFL 5/16/2022</b>		ENG. APPROVAL <b>5/24/2022</b>	
CLASS <b>87</b>	SUB <b>02</b>	DRAWING USAGE <b>CUSTOMER</b>		CHECKED BY <b>BMC 5/24/2022</b>	



Engineering  
Support Team:  
1-888-753-7446

Locations:  
New York, NY  
Atlanta, GA  
Los Angeles, CA  
Plymouth, IN  
Salem, OR  
Dallas, TX

PART NO. <b>RMVD10-NPNH</b>	PAGE <b>1 OF 2</b>
DWG. NO. <b>RMVD10-NPNH</b>	



ORDER MOUNT PIPES AND  
ATTACHMENT HARDWARE SEPARATELY

### TOLERANCE NOTES

TOLERANCES ON DIMENSIONS, UNLESS OTHERWISE NOTED ARE:  
SAWED, SHEARED AND GAS CUT EDGES ( $\pm 0.030"$ )  
DRILLED AND GAS CUT HOLES ( $\pm 0.030"$ ) - NO CONING OF HOLES  
LASER CUT EDGES AND HOLES ( $\pm 0.010"$ ) - NO CONING OF HOLES  
BENDS ARE  $\pm 1/2$  DEGREE  
ALL OTHER MACHINING ( $\pm 0.030"$ )  
ALL OTHER ASSEMBLY ( $\pm 0.060"$ )

PROPRIETARY NOTE:  
THE DATA AND TECHNIQUES CONTAINED IN THIS DRAWING ARE PROPRIETARY INFORMATION OF VALMONT INDUSTRIES AND CONSIDERED A TRADE SECRET. ANY USE OR DISCLOSURE WITHOUT THE CONSENT OF VALMONT INDUSTRIES IS STRICTLY PROHIBITED.

DESCRIPTION  
**10'-6" DOUBLE MONOPOLE  
TRIPLE T-ARM 12"-45"  
NO MOUNT PIPES OR HARDWARE**

CPD NO.		DRAWN BY <b>CMFL 5/16/2022</b>		ENG. APPROVAL <b>5/24/2022</b>	
CLASS <b>87</b>	SUB <b>02</b>	DRAWING USAGE <b>CUSTOMER</b>		CHECKED BY <b>BMC 5/24/2022</b>	



Engineering  
Support Team:  
1-888-753-7446

Locations:  
New York, NY  
Atlanta, GA  
Los Angeles, CA  
Plymouth, IN  
Salem, OR  
Dallas, TX

PART NO.	<b>RMVD10-NPNH</b>
DWG. NO.	<b>RMVD10-NPNH</b>