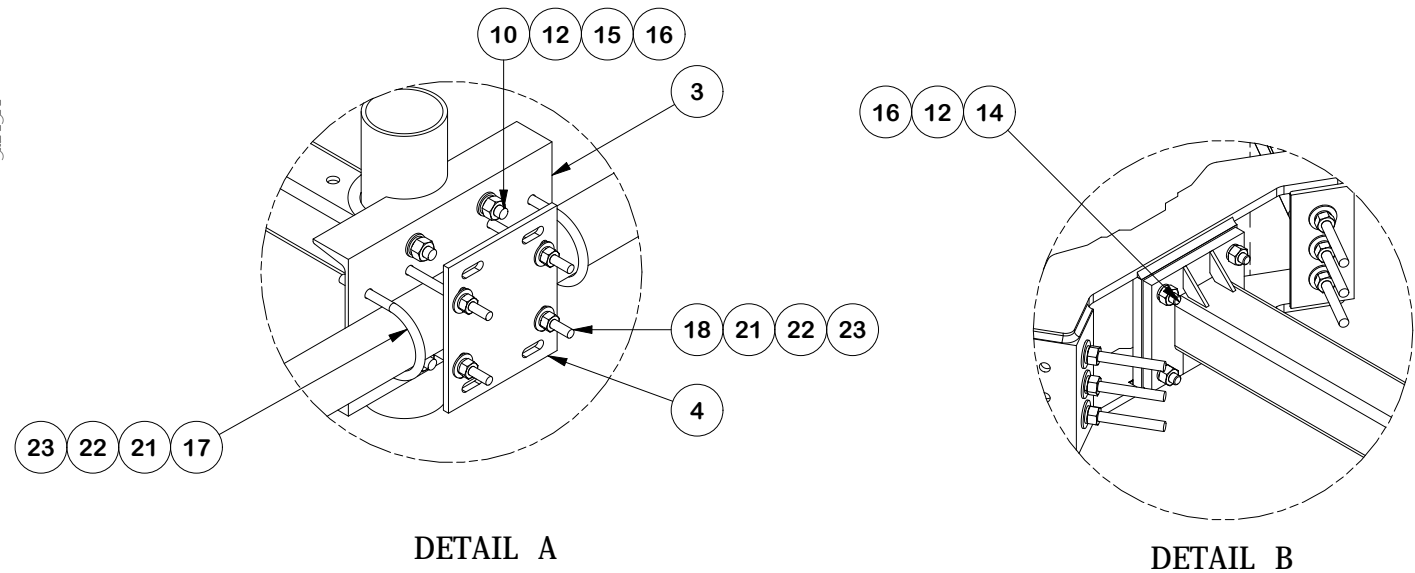


PARTS LIST						
ITEM	QTY	PART NO.	PART DESCRIPTION	LENGTH	UNIT WT.	NET WT.
1	6	X-LWRM	RING MOUNT WELDMENT		68.81	412.85
2	6	X-SV197-36	SUPPORT ARM WELDMENT - 36"		67.93	407.60
3	6	X-SP216	LARGE SUPPORT CROSS PLATE		22.08	132.46
4	6	SCX3	CROSSOVER PLATE	9.250 in	7.19	43.13
5	12	X-100064	CLAMP (4" V-CLAMP) GALVANIZED		0.92	11.06
6	6	X-127594	FLAT DISK CLAMP PLATE 4" CENTERS (GALV.)		2.51	15.04
7	6	P3150	3-1/2" X 150" (3" SCH 40) GALVANIZED PIPE	150.000 in	94.80	568.79
8	3	P3072	2 1/2" SCH. 40 PIPE (2.875" O.D. x 0.203" WALL) A500	72.000 in	34.84	104.52
9	18	G58R-24	5/8" x 24" THREADED ROD (HDG.)		2.09	37.63
9	18	G58R-48	5/8" X 48" GALV THREADED ROD		4.39	79.03
10	12	X-UB5458	5/8" X 4-5/8" X 7" X 3" U-BOLT (HDG.)		1.54	18.42
11	36	G58FW	5/8" HDG USS FLATWASHER	.122	0.07	2.54
12	84	G58LW	5/8" HDG LOCKWASHER		0.03	2.19
13	36	G58NUT	5/8" HDG HEAVY 2H HEX NUT		0.13	4.68
14	24	A58234	5/8" x 2-3/4" HDG A325 HEX BOLT	2.75	0.36	8.54
15	24	A58FW	5/8" HDG A325 FLATWASHER		0.03	0.82
16	48	A58NUT	5/8" HDG A325 HEX NUT		0.13	6.23
17	12	X-UB1358	1/2" X 3-5/8" X 5-1/2" X 3" U-BOLT (HDG.)		0.77	9.27
18	24	G12R-8	1/2" x 8" THREADED ROD (HDG.)		0.45	10.71
19	12	G12065	1/2" x 6-1/2" HDG HEX BOLT GR5 FULL THREAD	6-1/2	0.41	4.91
20	12	G1204	1/2" x 4" HDG HEX BOLT GR5 FULL THREAD	4	0.27	3.24
21	108	G12FW	1/2" HDG USS FLATWASHER	0.095	0.03	3.68
22	108	G12LW	1/2" HDG LOCKWASHER	.125	0.01	1.50
23	108	G12NUT	1/2" HDG HEAVY 2H HEX NUT		0.07	7.74
TOTAL WT. #					1896.59	



TOLERANCE NOTES

TOLERANCES ON DIMENSIONS, UNLESS OTHERWISE NOTED ARE:
SAWED, SHEARED AND GAS CUT EDGES ($\pm 0.030"$)
DRILLED AND GAS CUT HOLES ($\pm 0.030"$) - NO CONING OF HOLES
LASER CUT EDGES AND HOLES ($\pm 0.010"$) - NO CONING OF HOLES
BENDS ARE $\pm 1/2$ DEGREE
ALL OTHER MACHINING ($\pm 0.030"$)
ALL OTHER ASSEMBLY ($\pm 0.060"$)

PROPRIETARY NOTE:
THE DATA AND TECHNIQUES CONTAINED IN THIS DRAWING ARE PROPRIETARY INFORMATION OF VALMONT INDUSTRIES AND CONSIDERED A TRADE SECRET. ANY USE OR DISCLOSURE WITHOUT THE CONSENT OF VALMONT INDUSTRIES IS STRICTLY PROHIBITED.

DESCRIPTION
12'-6" DOUBLE MONOPOLE
TRIPLE T-ARM 12"-45"
NO MOUNT PIPES OR HARDWARE

CPD NO.		DRAWN BY CMFL 5/16/2022		ENG. APPROVAL 5/24/2022	
CLASS 87	SUB 02	DRAWING USAGE CUSTOMER		CHECKED BY BMC 5/24/2022	

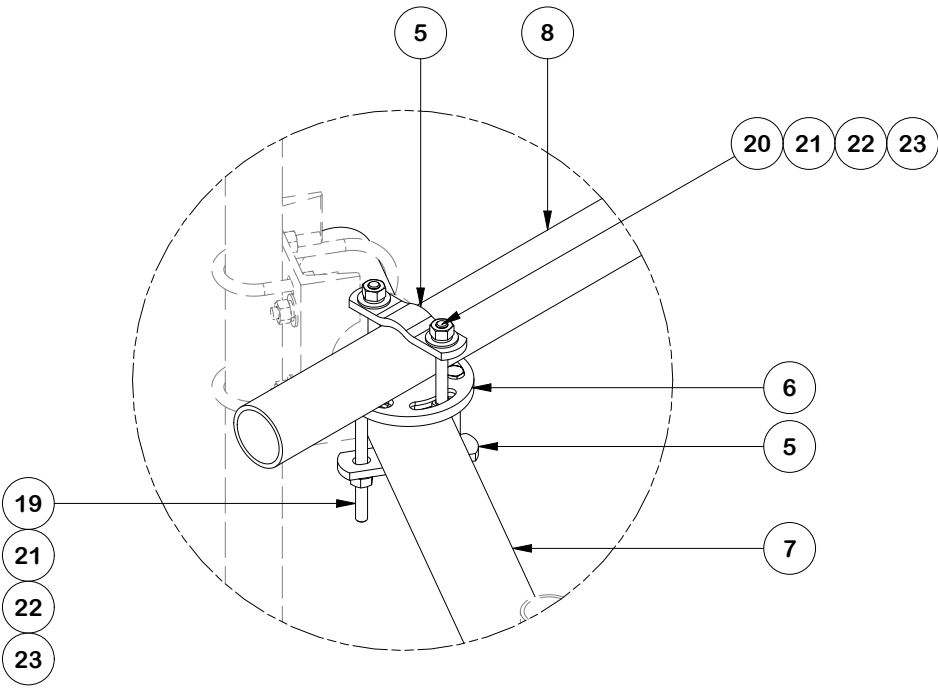
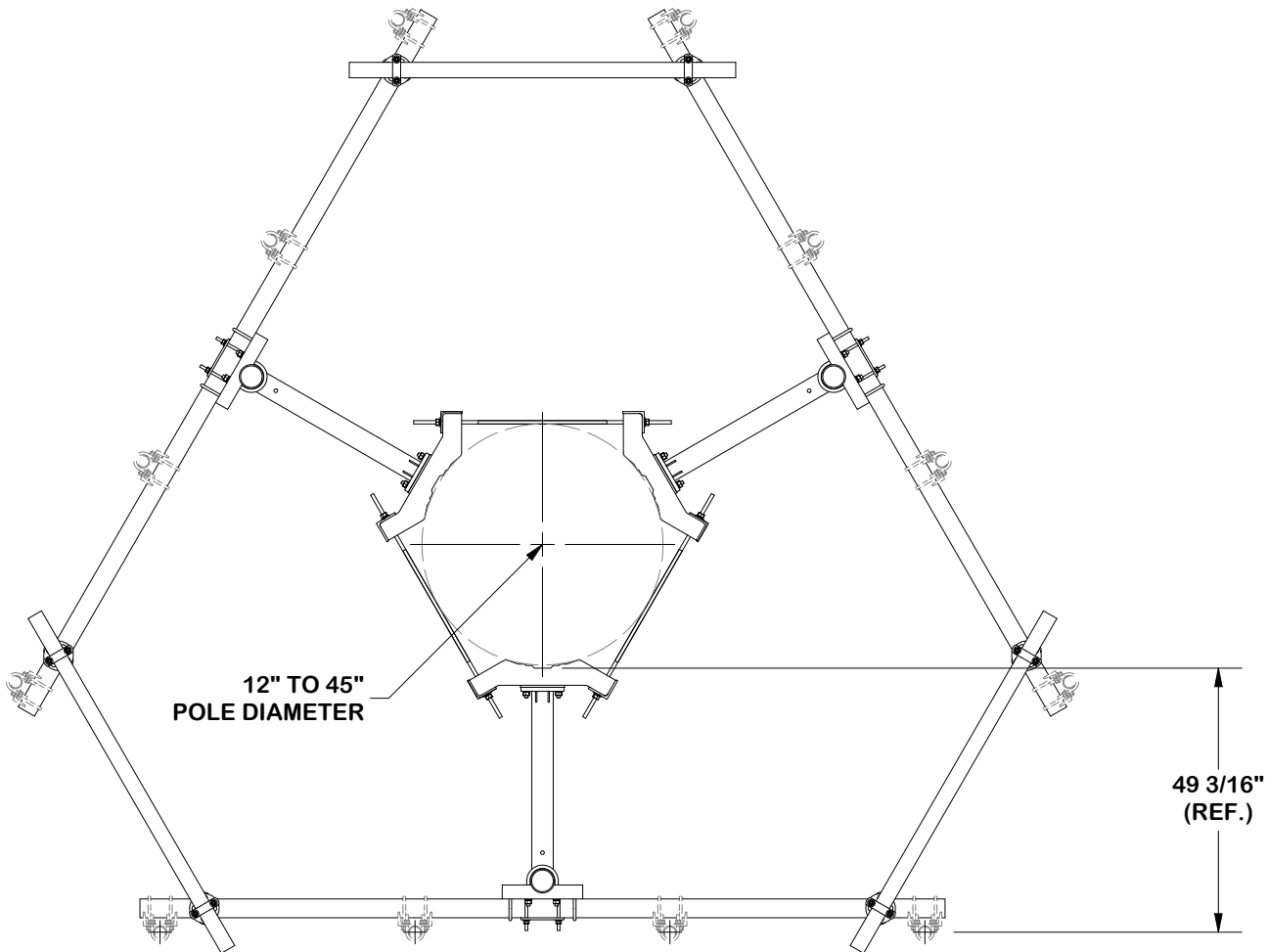
SITE PRO 1

A valmont COMPANY

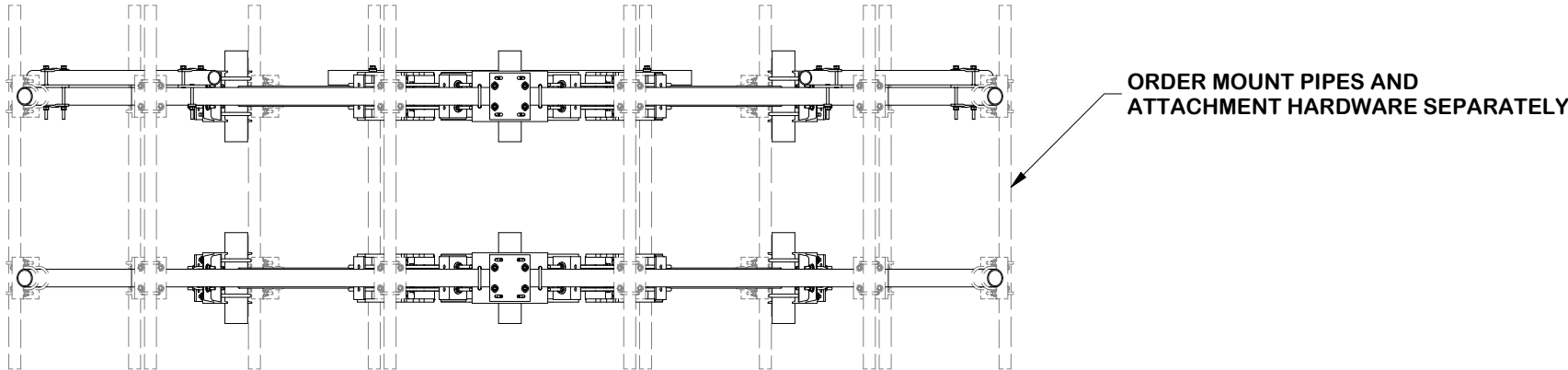
Locations:
New York, NY
Atlanta, GA
Los Angeles, CA
Plymouth, IN
Salem, OR
Dallas, TX

Engineering
Support Team:
1-888-753-7446

PART NO. RMVD12-NPNH	PAGE 1 OF 2
DWG. NO. RMVD12-NPNH	



DETAIL C



TOLERANCE NOTES

TOLERANCES ON DIMENSIONS, UNLESS OTHERWISE NOTED ARE:
SAWED, SHEARED AND GAS CUT EDGES ($\pm 0.030"$)
DRILLED AND GAS CUT HOLES ($\pm 0.030"$) - NO CONING OF HOLES
LASER CUT EDGES AND HOLES ($\pm 0.010"$) - NO CONING OF HOLES
BENDS ARE $\pm 1/2$ DEGREE
ALL OTHER MACHINING ($\pm 0.030"$)
ALL OTHER ASSEMBLY ($\pm 0.060"$)

PROPRIETARY NOTE:
THE DATA AND TECHNIQUES CONTAINED IN THIS DRAWING ARE PROPRIETARY INFORMATION OF VALMONT INDUSTRIES AND CONSIDERED A TRADE SECRET. ANY USE OR DISCLOSURE WITHOUT THE CONSENT OF VALMONT INDUSTRIES IS STRICTLY PROHIBITED.

DESCRIPTION
12'-6" DOUBLE MONOPOLE
TRIPLE T-ARM 12"-45"
NO MOUNT PIPES OR HARDWARE

CPD NO.		DRAWN BY CMFL 5/16/2022		ENG. APPROVAL 5/24/2022	
CLASS 87	SUB 02	DRAWING USAGE CUSTOMER		CHECKED BY BMC 5/24/2022	



Locations:
New York, NY
Atlanta, GA
Los Angeles, CA
Plymouth, IN
Salem, OR
Dallas, TX

Engineering
Support Team:
1-888-753-7446

PART NO.	RMVD12-NPNH
DWG. NO.	RMVD12-NPNH