

PARTS LIST						
ITEM	QTY	PART NO.	PART DESCRIPTION	LENGTH	UNIT WT.	NET WT.
1	6	X-LWRM	RING MOUNT WELDMENT		68.81	412.85
2	6	X-SV197-18	SUPPORT ARM WELDMENT - 18"		45.69	274.15
3	6	X-SP216	LARGE SUPPORT CROSS PLATE		22.08	132.46
4	6	SCX3	CROSSOVER PLATE	9.250 in	7.19	43.13
5	6	P396	3-1/2" X 96" (3" SCH 40) GALVANIZED PIPE	96.000 in	60.75	364.49
6	12	X-SP219	SMALL SUPPORT CROSS PLATE	8.250 in	8.61	103.33
7	12	X-100064	CLAMP (4" V-CLAMP) GALVANIZED		0.92	11.06
8	18	G58R-48	5/8" X 48" GALV THREADED ROD		4.39	79.03
8	18	G58R-24	5/8" x 24" THREADED ROD (HDG.)		2.09	37.63
9	12	X-UB5458	5/8" X 4-5/8" X 7" X 3" U-BOLT (HDG.)		1.54	18.42
10	36	G58FW	5/8" HDG USS FLATWASHER	.122	0.07	2.54
11	84	G58LW	5/8" HDG LOCKWASHER		0.03	2.19
12	36	G58NUT	5/8" HDG HEAVY 2H HEX NUT		0.13	4.68
13	24	A58234	5/8" x 2-3/4" HDG A325 HEX BOLT	2.75	0.36	8.54
14	24	A58FW	5/8" HDG A325 FLATWASHER		0.03	0.82
15	48	A58NUT	5/8" HDG A325 HEX NUT		0.13	6.23
16	12	X-UB1358	1/2" X 3-5/8" X 5-1/2" X 3" U-BOLT (HDG.)		0.77	9.27
17	24	X-UB1306	1/2" X 3-5/8" X 6" X 3" U-BOLT (HDG.)		0.83	19.88
18	24	X-UB1212	1/2" X 2-1/2" X 4-1/2" X 2" U-BOLT (HDG.)		0.63	15.00
19	24	G12R-8	1/2" x 8" THREADED ROD (HDG.)		0.45	10.71
20	24	G12045	1/2" x 4.5" HDG HEX BOLT GR5 FULL THREAD	4.5	0.30	7.15
21	216	G12FW	1/2" HDG USS FLATWASHER	0.095	0.03	7.36
22	192	G12LW	1/2" HDG LOCKWASHER	.125	0.01	2.67
23	192	G12NUT	1/2" HDG HEAVY 2H HEX NUT		0.07	13.75
24	9	A	B	C	D	E

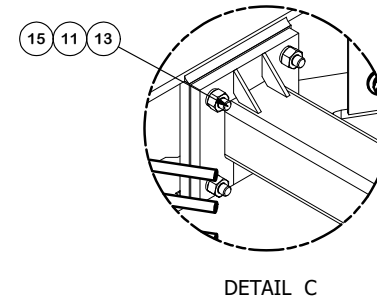
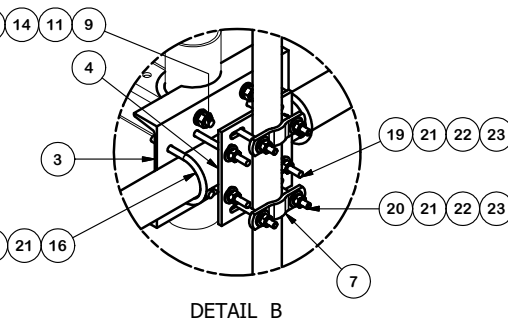


TABLE					
"ASSEMBLY NO."	PART NO. "A"	PART DESCRIPTION "B"	LENGTH "C"	UNIT WT. "D"	TOTAL WT.
RMVD8-296-18	P296	2-3/8" O.D. SCH. 40 PIPE	96"	29.22	1,880.76
RMVD8-2120-18	P2120	2-2/8" O.D. SCH. 40 PIPE	120"	36.53	1,936.65

TOLERANCE NOTES

TOLERANCES ON DIMENSIONS, UNLESS OTHERWISE NOTED ARE:
 SAWED, SHEARED AND GAS CUT EDGES ($\pm 0.030"$)
 DRILLED AND GAS CUT HOLES ($\pm 0.030"$) - NO CONING OF HOLES
 LASER CUT EDGES AND HOLES ($\pm 0.010"$) - NO CONING OF HOLES
 BENDS ARE $\pm 1/2$ DEGREE
 ALL OTHER MACHINING ($\pm 0.030"$)
 ALL OTHER ASSEMBLY ($\pm 0.060"$)

PROPRIETARY NOTE:
 THE DATA AND TECHNIQUES CONTAINED IN THIS DRAWING ARE PROPRIETARY INFORMATION OF VALMONT INDUSTRIES AND CONSIDERED A TRADE SECRET. ANY USE OR DISCLOSURE WITHOUT THE CONSENT OF VALMONT INDUSTRIES IS STRICTLY PROHIBITED.

DESCRIPTION

8' DOUBLE MONOPOLE TRIPLE T-ARM
 W/ 2-3/8" ANTENNA PIPES & 18" STANDOFF

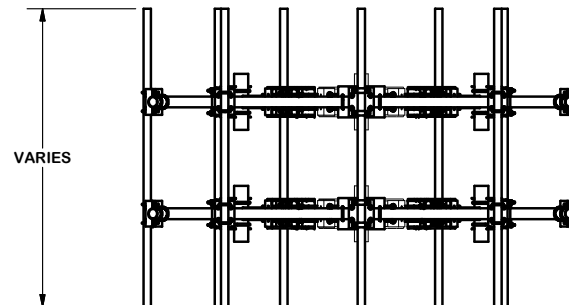
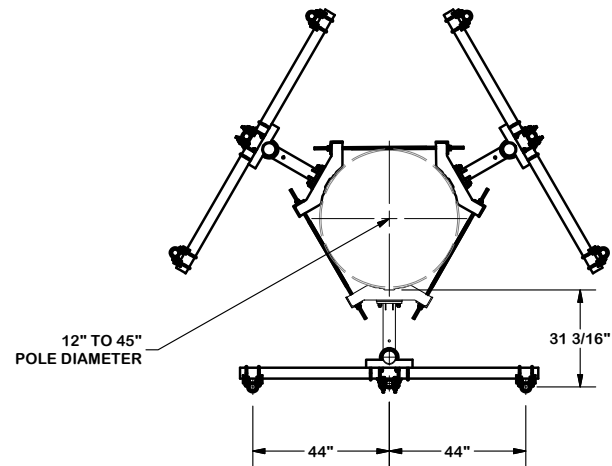
CPD NO.	DRAWN BY	ENG. APPROVAL
CLASS	CMFL 11/23/2021	11/13/2020
SUB	DRAWING USAGE	CHECKED BY
87	CUSTOMER	BMC 11/13/2020



Engineering
 Support Team:
 1-888-753-7446

Locations:
 New York, NY
 Atlanta, GA
 Los Angeles, CA
 Plymouth, IN
 Salem, OR
 Dallas, TX

PART NO.	RMVD8-2XX-18
DWG. NO.	RMVD8-2XX-18



TOLERANCE NOTES

TOLERANCES ON DIMENSIONS, UNLESS OTHERWISE NOTED ARE:
 SAWED, SHEARED AND GAS CUT EDGES ($\pm 0.030"$)
 DRILLED AND GAS CUT HOLES ($\pm 0.030"$) - NO CONING OF HOLES
 LASER CUT EDGES AND HOLES ($\pm 0.010"$) - NO CONING OF HOLES
 BENDS ARE $\pm 1/2$ DEGREE
 ALL OTHER MACHINING ($\pm 0.030"$)
 ALL OTHER ASSEMBLY ($\pm 0.060"$)

PROPRIETARY NOTE:
 THE DATA AND TECHNIQUES CONTAINED IN THIS DRAWING ARE PROPRIETARY INFORMATION OF VALMONT INDUSTRIES AND CONSIDERED A TRADE SECRET. ANY USE OR DISCLOSURE WITHOUT THE CONSENT OF VALMONT INDUSTRIES IS STRICTLY PROHIBITED.

DESCRIPTION

8' DOUBLE MONOPOLE TRIPLE T-ARM
 W/ 2-3/8" ANTENNA PIPES & 18" STANDOFF

CPD NO.	DRAWN BY	ENG. APPROVAL
	CMFL 11/23/2021	11/13/2020
CLASS	DRAWING USAGE	CHECKED BY
87	CUSTOMER	BMC 11/13/2020



A valmont COMPANY

Engineering
 Support Team:
 1-888-753-7446

Locations:
 New York, NY
 Atlanta, GA
 Los Angeles, CA
 Plymouth, IN
 Salem, OR
 Dallas, TX

PART NO.	RMVD8-2XX-18
DWG. NO.	RMVD8-2XX-18