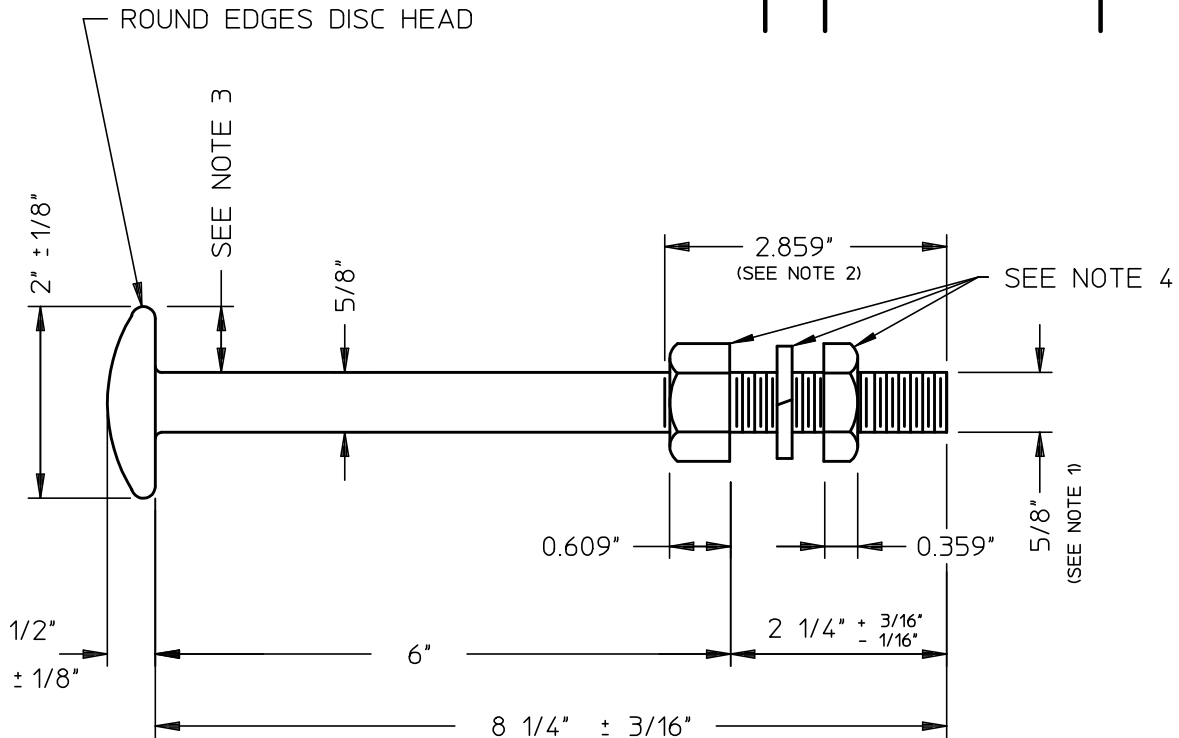


REV	DESCRIPTION	DATE	BY



PART "51-52580"

NOTES:

1. THREAD AND SHANK DIMENSIONS AND TOLERANCES TO BE IN ACCORDANCE WITH ANSI B.18.2.1 FOR HEAVY HEX STRUCTURAL BOLTS. OVERSIZE SHANKS (UP TO 0.700") MAY BE USED ON 0.625" DIA. BOLTS.
2. THREAD LENGTH IS TO BE MEASURED FROM THE POINT OF THE BOLT TO THE START OF THE THREAD RUN OUT.
3. MAXIMUM HEAD ECCENTRICITY = $1/8"$ (MEASURED FROM STEP SHANK TO OUTSIDE HEAD DIAMETER).
4. USE ONE HEAVY HEX NUT AND ONE HEAVY JAM HEX NUT IN ACCORDANCE WITH ANSI B.18.2.2 AND REGULAR SPRING LOCK WASHER PER ANSI B27.1
5. WEIGHTS ARE THEORETICAL AND INCLUDE 3 1/2 % FOR GALVANIZING.
6. BOLT MATERIAL (EXCEPT NUTS & LW) SHALL CONFORM TO MATERIAL SPECIFICATIONS CONTAINED IN ASTM A325, TYPE 1 OR 2.

WT = 1.3# EA.

valmont 
MICROFLECT

3575 25TH STREET S.E., SALEM, OREGON 97301
MAIN: (503)363-9267 FAX: (503)316-2040

STANDARD STEP
BOLT DETAILS
5/8 X 8 1/4

BY AS CK AH

DATE 02SEP99

S.O.

DWG.

A-105906

SHT. 1 OF 1