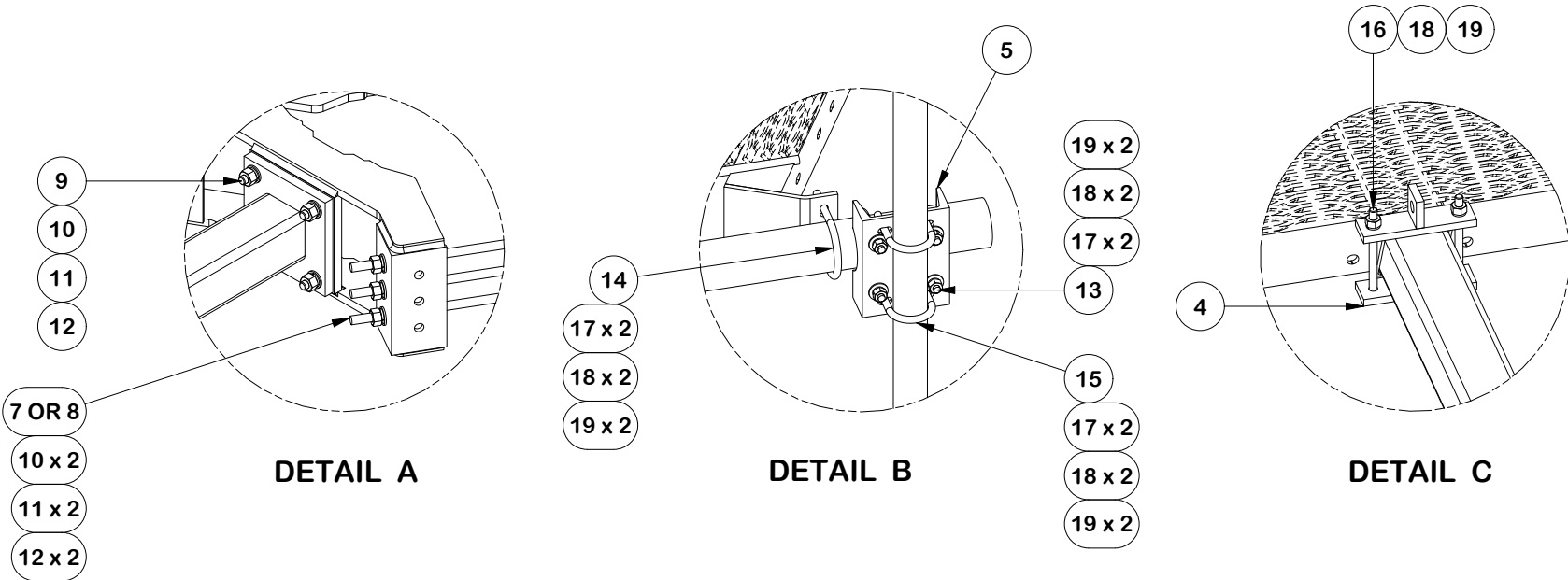


PARTS LIST					
ITEM	QTY	PART NO.	PART DESCRIPTION	LENGTH	UNIT WT.
1	3	X-LWRM	RING MOUNT WELDMENT		68.81
2	3	X-SNP-ST8	PLATFORM STANDOFF ARM WELDMENT, 43-3/4" LONG		60.39
3	3	X-SNPC	CORNER GRATING WELDMENT		199.69
4	3	X-SNPP1G	CLAMP PLATE	7.250 in	2.03
5	9	X-SP219	SMALL SUPPORT CROSS PLATE	8.250 in	8.61
6	3	P3126	3" SCH. 40 PIPE (3.5" O.D. x 0.216" WALL) A500	126.000 in	79.73
7	9	G58R-48	5/8" x 48" THREADED ROD (HDG.)		4.18
8	9	G58R-24	5/8" x 24" THREADED ROD (HDG.)		2.09
9	12	A58234	5/8" x 2-3/4" HDG A325 HEX BOLT	2.75	0.36
10	30	A58FW	5/8" HDG A325 FLATWASHER		0.03
11	30	G58LW	5/8" HDG LOCKWASHER		0.03
12	30	A58NUT	5/8" HDG A325 HEX NUT		0.13
13	18	X-UB1306	1/2" X 3-5/8" X 6" X 3" U-BOLT (HDG.)		0.83
14	12	X-UB1358	1/2" X 3-5/8" X 5-1/2" X 3" U-BOLT (HDG.)		0.77
15	18	X-UB1212	1/2" X 2-1/2" X 4-1/2" X 2" U-BOLT (HDG.)		0.63
16	6	G12065	1/2" x 6-1/2" HDG HEX BOLT GR5 FULL THREAD	6.5	0.41
17	96	G12FW	1/2" HDG USS FLATWASHER	0.095	0.03
18	102	G12LW	1/2" HDG LOCKWASHER	.125	0.01
19	102	G12NUT	1/2" HDG HEAVY 2H HEX NUT		0.07
20	9	A	2-3/8" (2" SCH. 40) GALVANIZED PIPE	B	C

2-3/8" O.D. VERTICAL MOUNTING PIPES					
ASSEMBLY NO.	PART NO. "A"	LENGTH "B"	UNIT WEIGHT "C"	NET WEIGHT "D"	TOTAL WEIGHT
SNP10-384	P284	7'-0"	26.91	242.19	1667.78
SNP10-396	P296	8'-0"	32.60	293.4	1719.43
SNP10-3126	P2126	10'-6"	40.75	366.75	1792.34



TOLERANCE NOTES

TOLERANCES ON DIMENSIONS, UNLESS OTHERWISE NOTED ARE:
SAWED, SHEARED AND GAS CUT EDGES ($\pm 0.030"$)
DRILLED AND GAS CUT HOLES ($\pm 0.030"$) - NO CONING OF HOLES
LASER CUT EDGES AND HOLES ($\pm 0.010"$) - NO CONING OF HOLES
BENDS ARE $\pm 1/2$ DEGREE
ALL OTHER MACHINING ($\pm 0.030"$)
ALL OTHER ASSEMBLY ($\pm 0.060"$)

PROPRIETARY NOTE:
THE DATA AND TECHNIQUES CONTAINED IN THIS DRAWING ARE PROPRIETARY INFORMATION OF VALMONT INDUSTRIES AND CONSIDERED A TRADE SECRET. ANY USE OR DISCLOSURE WITHOUT THE CONSENT OF VALMONT INDUSTRIES IS STRICTLY PROHIBITED.

DESCRIPTION
**10' SNUB NOSE PLATFORM
W/ (9) 2-3/8" O.D. MOUNT PIPES**

CPD NO.	DRAWN BY CMFL 7/13/2022	ENG. APPROVAL
CLASS 87	SUB 02	DRAWING USAGE CUSTOMER

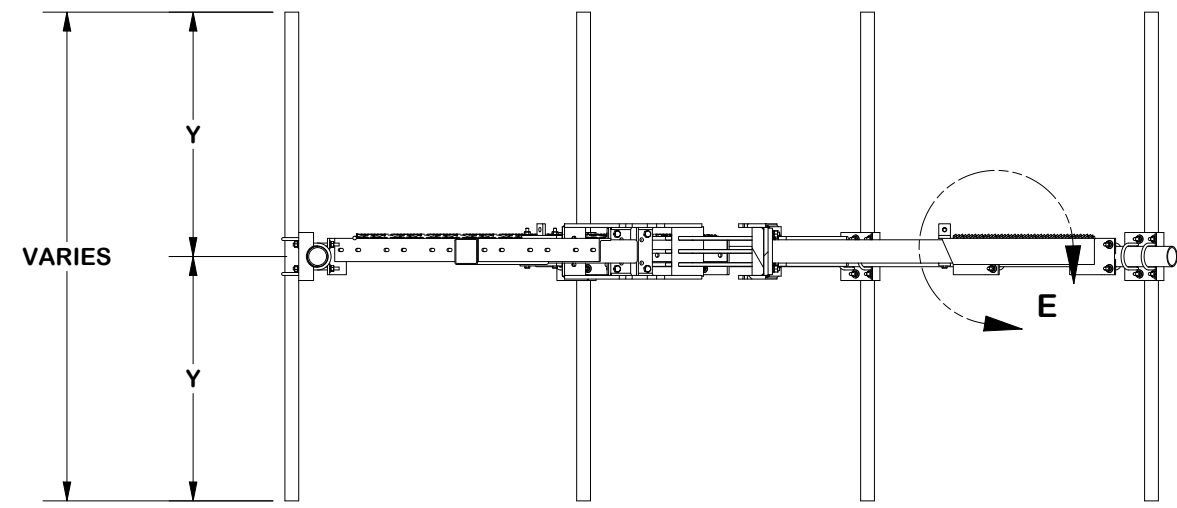
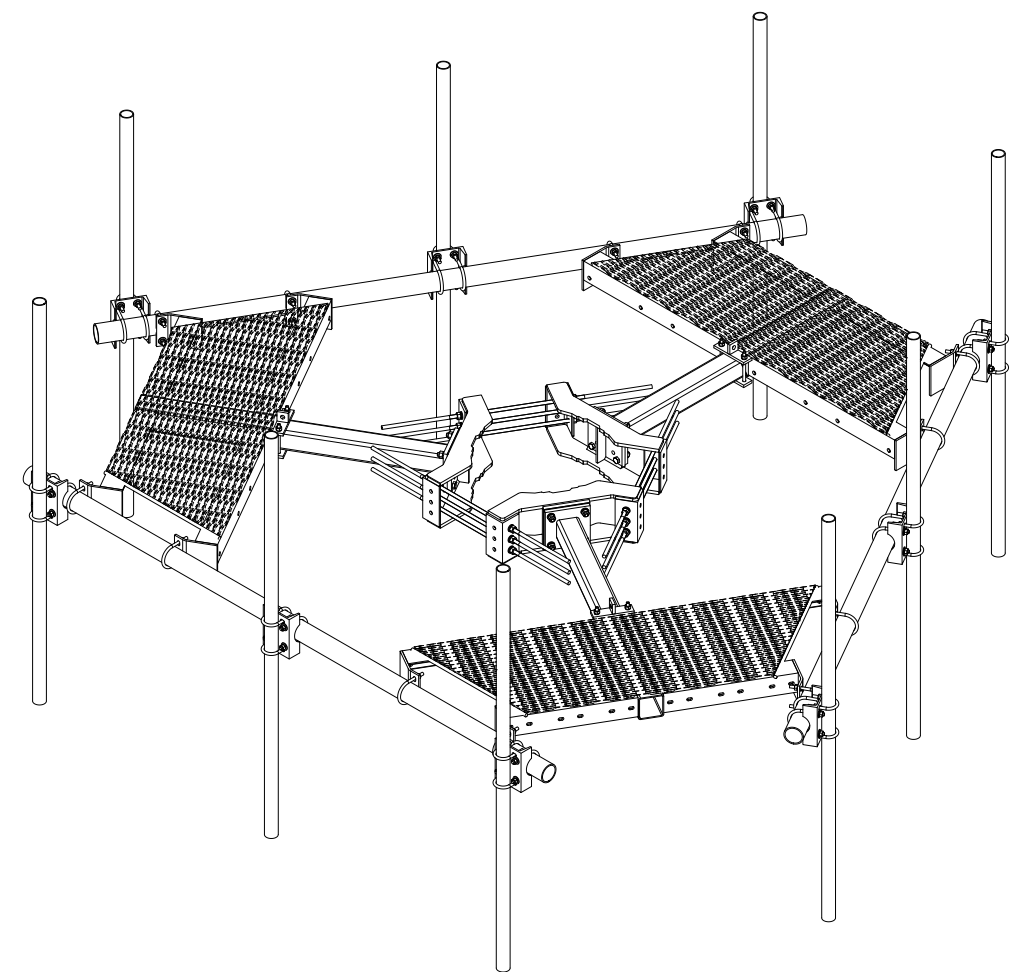
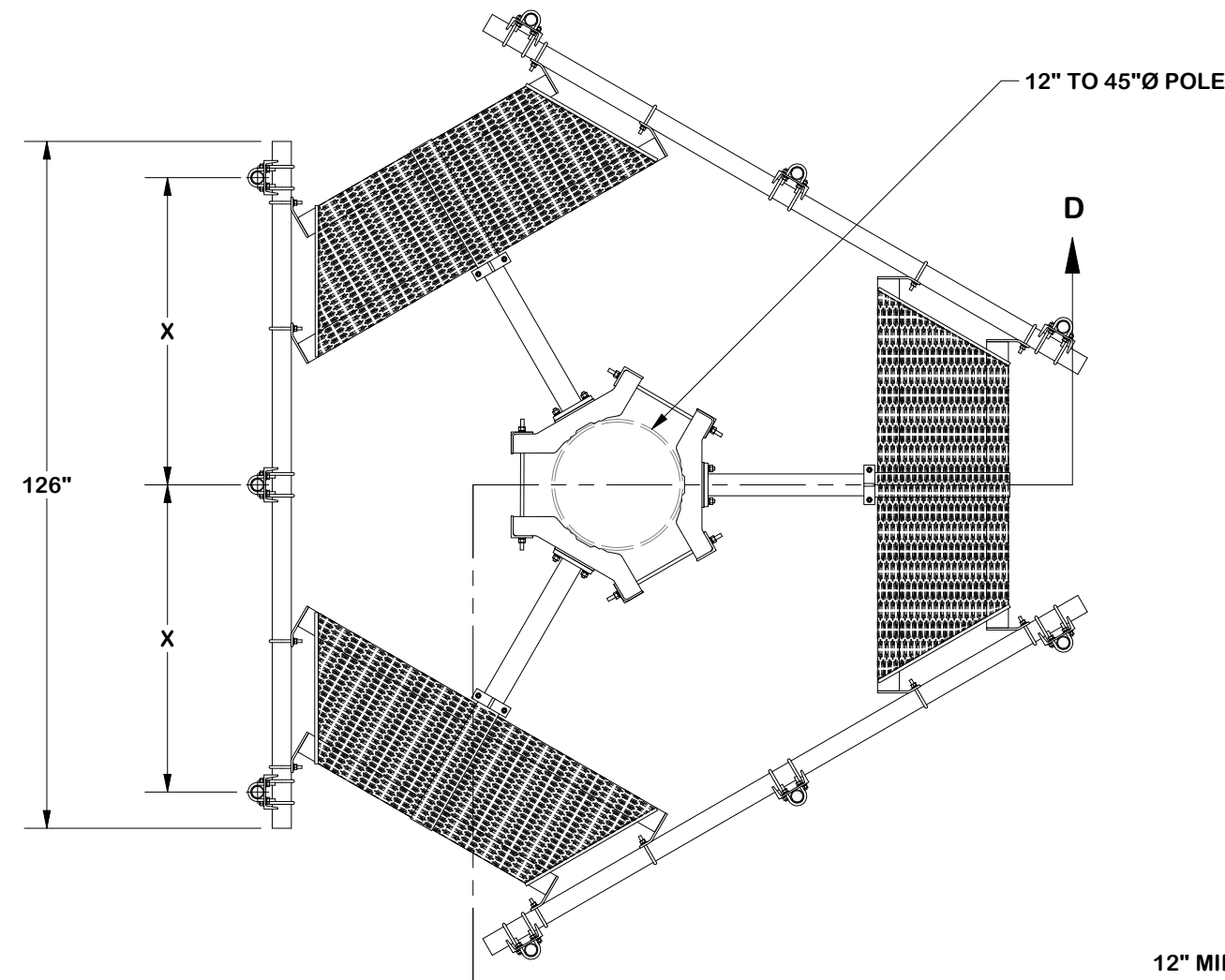
SITE PRO 1

A valmont COMPANY

Locations:
New York, NY
Atlanta, GA
Los Angeles, CA
Plymouth, IN
Salem, OR
Dallas, TX

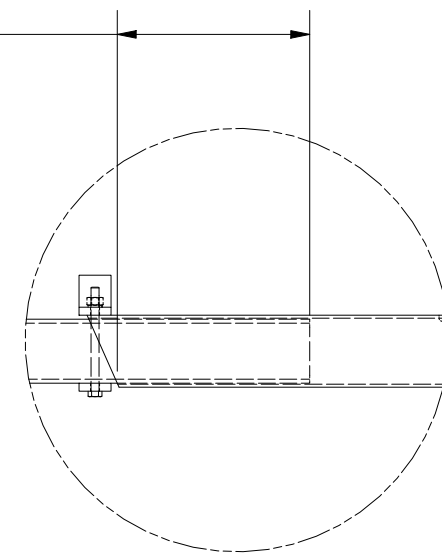
Engineering
Support Team:
1-888-753-7446

PART NO. SEE ASSEMBLY NO.	PAGE 1 OF 2
DWG. NO. SNP10-3XX	



SECTION D-D

12" MIN. INSERTION



DETAIL E

TOLERANCE NOTES

TOLERANCES ON DIMENSIONS, UNLESS OTHERWISE NOTED ARE:
SAWED, SHEARED AND GAS CUT EDGES ($\pm 0.030"$)
DRILLED AND GAS CUT HOLES ($\pm 0.030"$) - NO CONING OF HOLES
LASER CUT EDGES AND HOLES ($\pm 0.010"$) - NO CONING OF HOLES
BENDS ARE $\pm 1/2$ DEGREE
ALL OTHER MACHINING ($\pm 0.030"$)
ALL OTHER ASSEMBLY ($\pm 0.060"$)

PROPRIETARY NOTE:
THE DATA AND TECHNIQUES CONTAINED IN THIS DRAWING ARE PROPRIETARY INFORMATION OF VALMONT INDUSTRIES AND CONSIDERED A TRADE SECRET. ANY USE OR DISCLOSURE WITHOUT THE CONSENT OF VALMONT INDUSTRIES IS STRICTLY PROHIBITED.

DESCRIPTION
**10' SNUB NOSE PLATFORM
W/ (9) 2-3/8" O.D. MOUNT PIPES**

CPD NO.		DRAWN BY	ENG. APPROVAL
		CMFL 7/13/2022	
CLASS	SUB	DRAWING USAGE	CHECKED BY
87	02	CUSTOMER	



A **valmont** COMPANY

Locations:
New York, NY
Atlanta, GA
Los Angeles, CA
Plymouth, IN
Salem, OR
Dallas, TX

Engineering
Support Team:
1-888-753-7446

PART NO.	SEE ASSEMBLY NO.	2 OF 2 PAGE
DWG. NO.		
	SNP10-3XX	