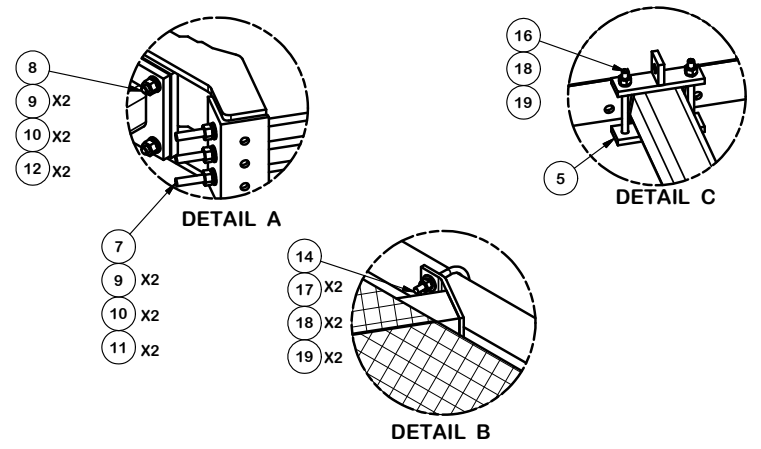


| PARTS LIST |     |           |  |            |             |         |
|------------|-----|-----------|--|------------|-------------|---------|
| ITEM       | QTY | PART NO.  | PART DESCRIPTION                                 | LENGTH     | UNIT WT.    | NET WT. |
| 1          | 3   | X-LWRM    | RING MOUNT WELDMENT                              |            | 68.81       | 206.42  |
| 2          | 3   | X-SNP-STL | SNB8 TELESCOPING ARM FOR GRATING                 |            | 105.60      | 316.79  |
| 3          | 3   | X-SNPC    | CORNER GRATING WELDMENT                          |            | 194.33      | 582.99  |
| 4          | 3   | P3174     | 3-1/2" X 174" SCH 40 GALVANIZED PIPE             | 174.000 in | 109.97      | 329.90  |
| 5          | 3   | X-SNPP1G  | CLAMP PLATE                                      | 7.250 in   | 2.03        | 6.10    |
| 7          | 9   | G58R-48   | 5/8" x 48" THREADED ROD (HDG.)                   |            | 0.40        | 3.59    |
| 7          | 9   | G58R-24   | 5/8" x 24" THREADED ROD (HDG.)                   |            | 0.40        | 3.59    |
| 8          | 12  | A58234    | 5/8" x 2-3/4" HDG A325 HEX BOLT                  | 2.75       | 0.36        | 4.27    |
| 9          | 30  | A58FW     | 5/8" HDG A325 FLATWASHER                         |            | 0.03        | 1.02    |
| 10         | 42  | G58LW     | 5/8" HDG LOCKWASHER                              |            | 0.03        | 1.10    |
| 11         | 18  | A58NUT    | 5/8" HDG A325 HEX NUT                            |            | 0.13        | 2.34    |
| 12         | 24  | G58NUT    | 5/8" HDG HEAVY 2H HEX NUT                        |            | 0.13        | 3.12    |
| 14         | 12  | X-UB1358  | 1/2" X 3-5/8" X 5-1/2" X 3" U-BOLT (HDG.)        |            | 0.26        | 3.08    |
| 16         | 6   | G12065    | 1/2" x 6-1/2" HDG HEX BOLT GR5 FULL THREAD       | 7-1/2      | 0.41        | 2.46    |
| 17         | 24  | G12FW     | 1/2" HDG USS FLATWASHER                          |            | 0.03        | 0.82    |
| 18         | 30  | G12LW     | 1/2" HDG LOCKWASHER                              |            | 0.01        | 0.42    |
| 19         | 30  | G12NUT    | 1/2" HDG HEAVY 2H HEX NUT                        |            | 0.07        | 2.15    |
| 20         | 3   | X-SNPM    | GRATING WALKWAY FOR 12' & 14' SNUB NOSE PLATFORM |            | 82.72       | 248.15  |
| 21         | 24  | G58FW     | 5/8" HDG USS FLATWASHER                          |            | 0.07        | 1.69    |
| 22         | 12  | G5802     | 5/8" x 2" HDG HEX BOLT GR5                       |            | 0.27        | 3.24    |
|            |     |           |  |            | TOTAL WT. # | 1778.68 |



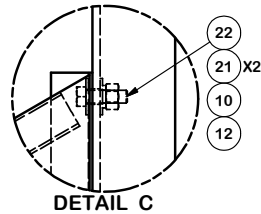
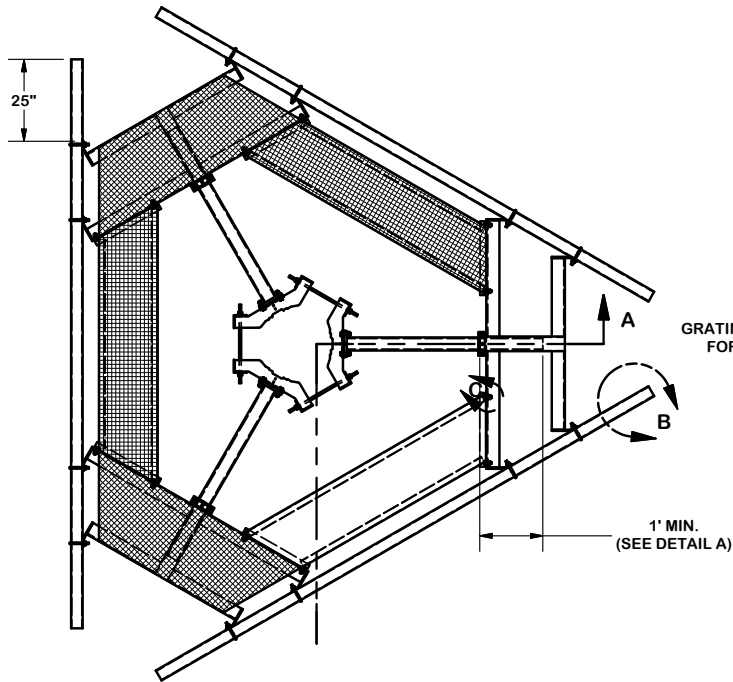
**TOLERANCE NOTES**

TOLERANCES ON DIMENSIONS, UNLESS OTHERWISE NOTED ARE:  
 SAWED, SHEARED AND GAS CUT EDGES ( $\pm 0.030"$ )  
 DRILLED AND GAS CUT HOLES ( $\pm 0.030"$ ) - NO CONING OF HOLES  
 LASER CUT EDGES AND HOLES ( $\pm 0.010"$ ) - NO CONING OF HOLES  
 BENDS ARE  $\pm 1/2$  DEGREE  
 ALL OTHER MACHINING ( $\pm 0.030"$ )  
 ALL OTHER ASSEMBLY ( $\pm 0.060"$ )

PROPRIETARY NOTE:  
 THE DATA AND TECHNIQUES CONTAINED IN THIS DRAWING ARE PROPRIETARY INFORMATION OF VALMONT INDUSTRIES AND CONSIDERED A TRADE SECRET. ANY USE OR DISCLOSURE WITHOUT THE CONSENT OF VALMONT INDUSTRIES IS STRICTLY PROHIBITED.

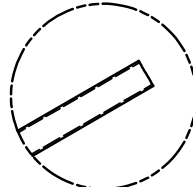
|             |               |  |               |
|-------------|---------------|--|---------------|
| DESCRIPTION |               | 14' SNUB NOSE PLATFORM<br>WITHOUT ANTENNA MOUNTING PIPES<br>AND HARDWARE |               |
| CPD NO.     | DRAWN BY      | ENG. APPROVAL  |               |
|             | CEK 7/24/2015 |  |               |
| CLASS       | SUB           | DRAWING USAGE  | CHECKED BY    |
| 81          | 02            | CUSTOMER   | BMC 7/24/2015 |

|                       |   |   |
|-----------------------|---|---|
| <br>A valmont COMPANY | Engineering Support Team:<br>1-888-753-7446 | Locations:<br>New York, NY<br>Atlanta, GA<br>Los Angeles, CA<br>Plymouth, IN<br>Salem, OR<br>Dallas, TX |
|                       | PART NO.                                    | SNP14-NP  |
| DWG. NO.              | SNP14-NP                                    |   |

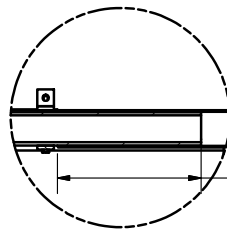
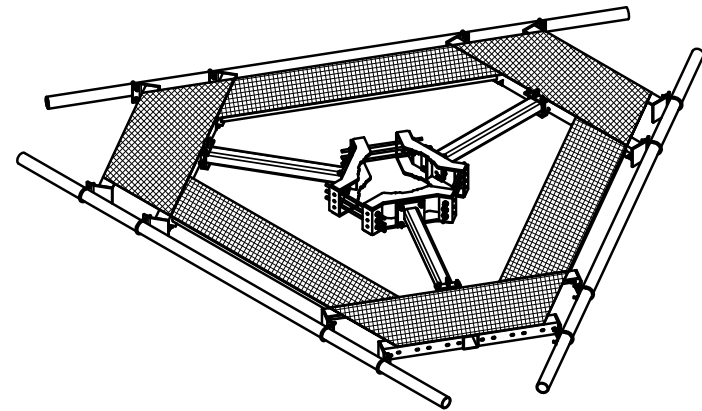


DETAIL C

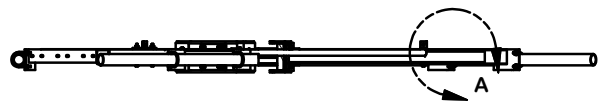
NOTE:  
GRATING REMOVED  
FOR CLARITY



DETAIL B



DETAIL A



SECTION A-A

**TOLERANCE NOTES**

TOLERANCES ON DIMENSIONS, UNLESS OTHERWISE NOTED ARE:  
 SAWED, SHEARED AND GAS CUT EDGES ( $\pm 0.030"$ )  
 DRILLED AND GAS CUT HOLES ( $\pm 0.030"$ ) - NO CONING OF HOLES  
 LASER CUT EDGES AND HOLES ( $\pm 0.010"$ ) - NO CONING OF HOLES  
 BENDS ARE  $\pm 1/2$  DEGREE  
 ALL OTHER MACHINING ( $\pm 0.030"$ )  
 ALL OTHER ASSEMBLY ( $\pm 0.060"$ )

PROPRIETARY NOTE:  
 THE DATA AND TECHNIQUES CONTAINED IN THIS DRAWING ARE PROPRIETARY INFORMATION OF VALMONT INDUSTRIES AND CONSIDERED A TRADE SECRET. ANY USE OR DISCLOSURE WITHOUT THE CONSENT OF VALMONT INDUSTRIES IS STRICTLY PROHIBITED.

DESCRIPTION  
**14' SNUB NOSE PLATFORM  
 WITHOUT ANTENNA MOUNTING PIPES  
 AND HARDWARE**



Engineering  
 Support Team:  
 1-888-753-7446

Locations:  
 New York, NY  
 Atlanta, GA  
 Los Angeles, CA  
 Plymouth, IN  
 Salem, OR  
 Dallas, TX

|             |                             |                           |
|-------------|-----------------------------|---------------------------|
| CPD NO.     | DRAWN BY<br>CEK 7/24/2015   | ENG. APPROVAL             |
| CLASS<br>81 | SUB<br>02                   | DRAWING USAGE<br>CUSTOMER |
|             | CHECKED BY<br>BMC 7/24/2015 |                           |

|                             |                |
|-----------------------------|----------------|
| PART NO.<br><b>SNP14-NP</b> | PAGE<br>2 OF 2 |
| DWG. NO.<br><b>SNP14-NP</b> |                |