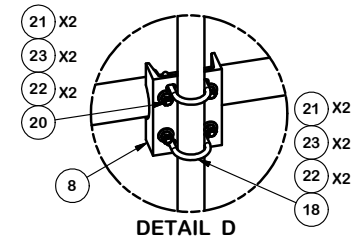
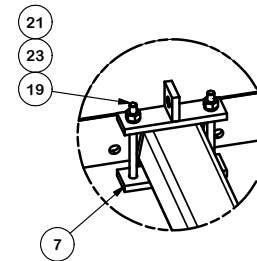
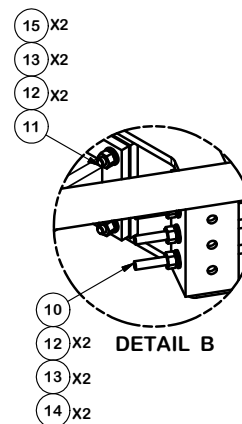
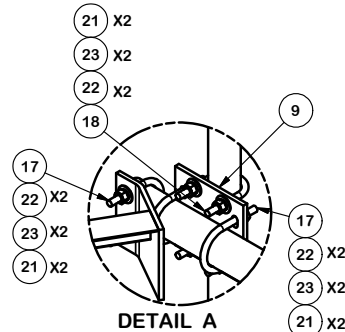


PARTS LIST						
ITEM	QTY	PART NO.	PART DESCRIPTION	LENGTH	UNIT WT.	NET WT.
1	3	X-LWRM	RING MOUNT WELDMENT		68.81	206.42
2	3	X-SNP-ST8	SNB8 TELESCOPING ARM FOR GRATING		60.39	181.16
3	3	X-SNPC	CORNER GRATING WELDMENT		194.33	582.99
4	3	P396	3" SCH. 40 PIPE (3.5" O.D. x 0.216" WALL) A500	96.000 in	60.75	182.25
5	3	P3096	2-7/8" OD X 96" Sch 40 Galvanized Pipe		46.45	139.36
6	3	X-SNP-HRA	CORNER BRACKET FOR SNPX PLATFORMS		25.95	77.86
7	3	X-SNPP1G	CLAMP PLATE	7.250 in	2.03	6.10
8	9	X-SP219	SMALL SUPPORT CROSS PLATE	8.250 in	8.61	77.50
9	9	SCX2	CROSSOVER PLATE	7.000 in	4.80	43.17
10	9	G58R-48	5/8" x 48" THREADED ROD (HDG.)		0.55	4.94
10	9	G58R-24	5/8" x 24" THREADED ROD (HDG.)		0.55	4.94
11	12	A58234	5/8" x 2-3/4" HDG A325 HEX BOLT	2.75	0.36	4.27
12	30	A58FW	5/8" HDG A325 FLATWASHER		0.03	1.02
13	30	G58LW	5/8" HDG LOCKWASHER		0.03	0.78
14	18	A58NUT	5/8" HDG A325 HEX NUT		0.13	2.34
15	12	G58NUT	5/8" HDG HEAVY 2H HEX NUT		0.13	1.56
16	12	X-UB1358	1/2" X 3-5/8" X 5-1/2" X 3" U-BOLT (HDG.)		0.73	8.78
17	24	X-UB1300	1/2" X 3" X 5" X 2" U-BOLT (HDG.)		0.73	17.56
18	36	X-UB1212	1/2" X 2-1/2" X 4-1/2" X 2" U-BOLT (HDG.)		0.73	26.34
19	6	G12065	1/2" x 6-1/2" HDG HEX BOLT GR5 FULL THREAD	7-1/2	0.41	2.46
20	18	X-UB1306	1/2" X 3-5/8" X 6" X 3" U-BOLT (HDG.)		0.73	13.17
21	186	G12NUT	1/2" HDG HEAVY 2H HEX NUT		0.07	13.32
22	180	G12FW	1/2" HDG USS FLATWASHER		0.03	6.13
23	186	G12LW	1/2" HDG LOCKWASHER		0.01	2.59
24	9	A	2" SCH. 40 PIPE (2.375" O.D. x 0.154" WALL) A500	B	C	D



2-3/8" O.D. VERTICAL MOUNTING PIPES					
ASSEMBLY NO.	PART NO. "A"	LENGTH "B"	UNIT WEIGHT "C"	NET WEIGHT "D"	TOTAL WEIGHT
SNP8HR-372	P272	6'-0"	23.07	207.63	1717.07
SNP8HR-384	P284	7'-0"	26.91	242.19	1751.63
SNP8HR-396	P296	8'-0"	30.76	276.84	1786.28
SNP8HR-3126	P2126	10'-6"	40.75	366.75	1876.19

#### TOLERANCE NOTES

TOLERANCES ON DIMENSIONS, UNLESS OTHERWISE NOTED ARE:  
 SAWED, SHEARED AND GAS CUT EDGES ( $\pm 0.030"$ )  
 DRILLED AND GAS CUT HOLES ( $\pm 0.030"$ ) - NO CONING OF HOLES  
 LASER CUT EDGES AND HOLES ( $\pm 0.010"$ ) - NO CONING OF HOLES  
 BENDS ARE  $\pm 1/2$  DEGREE  
 ALL OTHER MACHINING ( $\pm 0.030"$ )  
 ALL OTHER ASSEMBLY ( $\pm 0.060"$ )

PROPRIETARY NOTE:  
 THE DATA AND TECHNIQUES CONTAINED IN THIS DRAWING ARE PROPRIETARY INFORMATION OF VALMONT INDUSTRIES AND CONSIDERED A TRADE SECRET. ANY USE OR DISCLOSURE WITHOUT THE CONSENT OF VALMONT INDUSTRIES IS STRICTLY PROHIBITED.

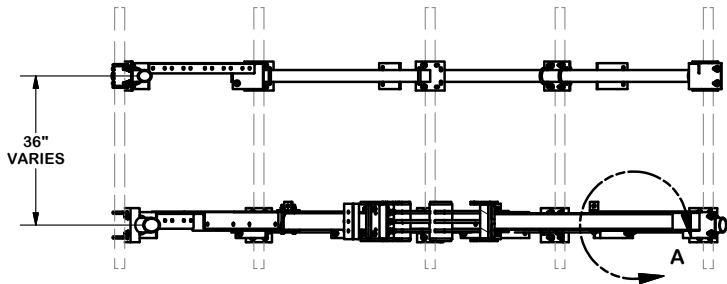
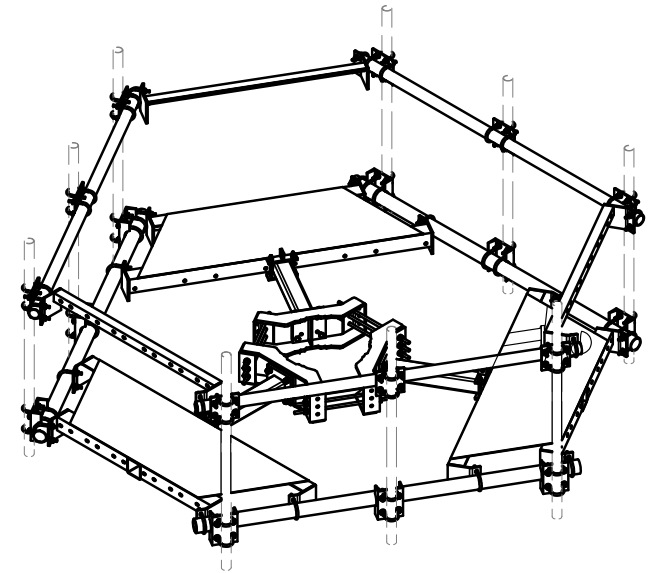
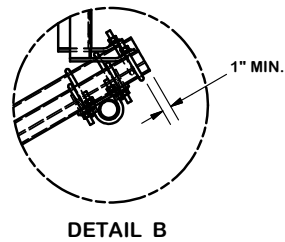
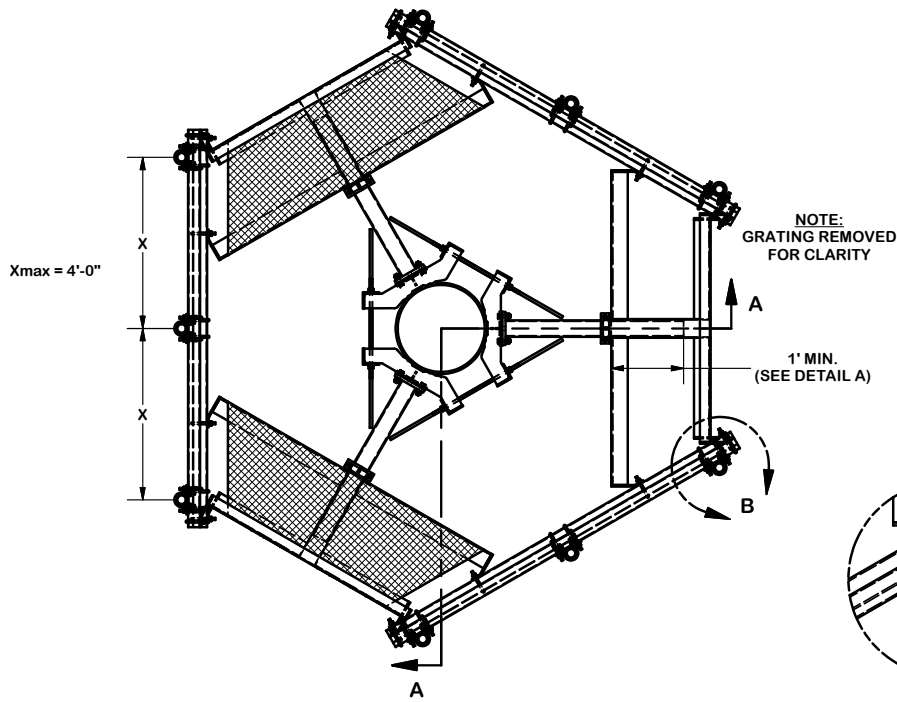
DESCRIPTION  
**8' SNUB NOSE  
 PLATFORM WITH  
 HANDRAIL**

**SITE PRO 1**  
 Engineering Support Team:  
 1-888-753-7446

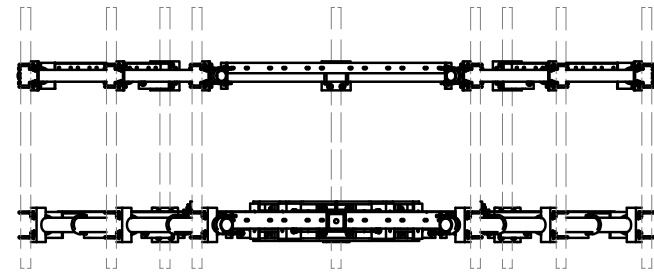
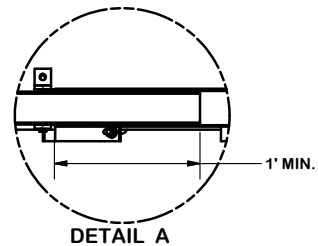
Locations:  
 New York, NY  
 Atlanta, GA  
 Los Angeles, CA  
 Plymouth, IN  
 Salem, OR  
 Dallas, TX

CPD NO.	DRAWN BY <b>CEK 11/19/2014</b>	ENG. APPROVAL
CLASS 81	SUB 02	DRAWING USAGE <b>CUSTOMER</b>
CHECKED BY <b>BMC 11/21/2014</b>		

PART NO.	<b>SEE ASSEMBLY NO.</b>	PAGE 1 OF 2
DWG. NO.	<b>SNP8HR-3XX</b>	



SECTION A-A



**TOLERANCE NOTES**

TOLERANCES ON DIMENSIONS, UNLESS OTHERWISE NOTED ARE:  
 SAWED, SHEARED AND GAS CUT EDGES ( $\pm 0.030"$ )  
 DRILLED AND GAS CUT HOLES ( $\pm 0.030"$ ) - NO CONING OF HOLES  
 LASER CUT EDGES AND HOLES ( $\pm 0.010"$ ) - NO CONING OF HOLES  
 BENDS ARE  $\pm 1/2$  DEGREE  
 ALL OTHER MACHINING ( $\pm 0.030"$ )  
 ALL OTHER ASSEMBLY ( $\pm 0.060"$ )

PROPRIETARY NOTE:  
 THE DATA AND TECHNIQUES CONTAINED IN THIS DRAWING ARE PROPRIETARY INFORMATION OF VALMONT INDUSTRIES AND CONSIDERED A TRADE SECRET. ANY USE OR DISCLOSURE WITHOUT THE CONSENT OF VALMONT INDUSTRIES IS STRICTLY PROHIBITED.

DESCRIPTION

8" SNUB NOSE  
 PLATFORM WITH  
 HANDRAIL

CPD NO.	DRAWN BY CEK 11/19/2014	ENG. APPROVAL
CLASS 81	SUB 02	DRAWING USAGE CUSTOMER
	CHECKED BY BMC 11/21/2014	



Engineering  
 Support Team:  
 1-888-753-7446

Locations:  
 New York, NY  
 Atlanta, GA  
 Los Angeles, CA  
 Plymouth, IN  
 Salem, OR  
 Dallas, TX

PART NO. SEE ASSEMBLY NO.

DWG. NO. SNP8HR-3XX