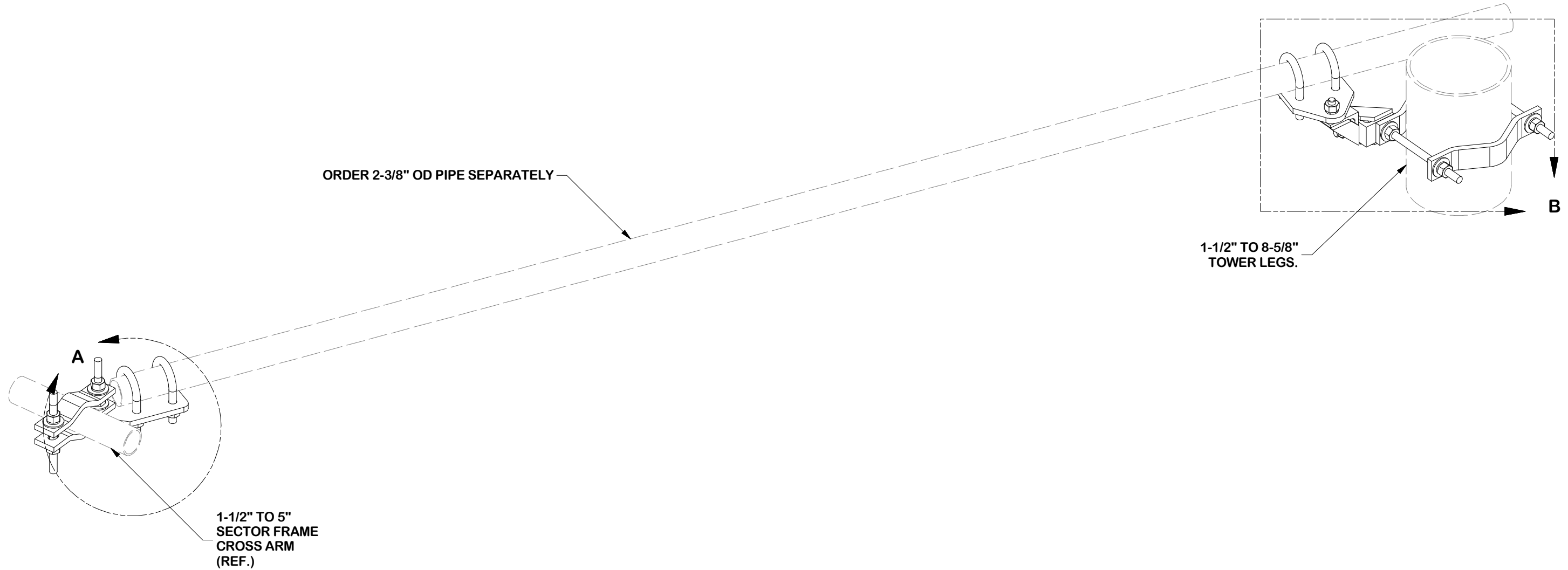


PARTS LIST						
ITEM	QTY	PART NO.	PART DESCRIPTION	LENGTH	UNIT WT.	NET WT.
1	2	X-SPTB	SLIDING PIPE TIE BACK PLATE	5 1/2 in	5.87	11.74
2	2	X-TBCA	TIE BACK CLIP ANGLE		2.01	4.01
3	2	MCP	CLAMP HALF 1/2" THICK, 11-5/8" LONG	12 1/16 in	3.59	7.19
4	4	DCP	1/2" THICK, 5-3/4" CNER TO CENTER CLAMP HALF	8 1/8 in	2.36	9.45
5	2	G58R-12	5/8" x 12" THREADED ROD (HDG.)		1.05	2.09
6	4	G58R-8	5/8" x 8" THREADED ROD (HDG.)		0.70	2.79
7	4	X-UB5258	5/8" X 2-5/8" X 4-1/2" X 2" U-BOLT (HDG.)		1.00	4.00
8	4	G5804	5/8" x 4" HDG HEX BOLT GR5		0.44	1.78
9	2	G5802	5/8" x 2" HDG HEX BOLT GR5		0.27	0.54
10	10	G58FW	5/8" HDG USS FLATWASHER	1/8 in	0.07	0.70
11	18	G58LW	5/8" HDG LOCKWASHER		0.03	0.47
12	20	G58NUT	5/8" HDG HEAVY 2H HEX NUT		0.13	2.60
					TOTAL WT. #	47.36



TOLERANCE NOTES

TOLERANCES ON DIMENSIONS, UNLESS OTHERWISE NOTED ARE:
 SAWED, SHEARED AND GAS CUT EDGES (± 0.030")
 DRILLED AND GAS CUT HOLES (± 0.030") - NO CONING OF HOLES
 LASER CUT EDGES AND HOLES (± 0.010") - NO CONING OF HOLES
 BENDS ARE ± 1/2 DEGREE
 ALL OTHER MACHINING (± 0.030")
 ALL OTHER ASSEMBLY (± 0.060")

PROPRIETARY NOTE:
 THE DATA AND TECHNIQUES CONTAINED IN THIS DRAWING ARE PROPRIETARY INFORMATION OF VALMONT INDUSTRIES AND CONSIDERED A TRADE SECRET. ANY USE OR DISCLOSURE WITHOUT THE CONSENT OF VALMONT INDUSTRIES IS STRICTLY PROHIBITED.

DESCRIPTION
**SLIDING PIPE
 TIE BACK ASSEMBLY
 (NO PIPE)**

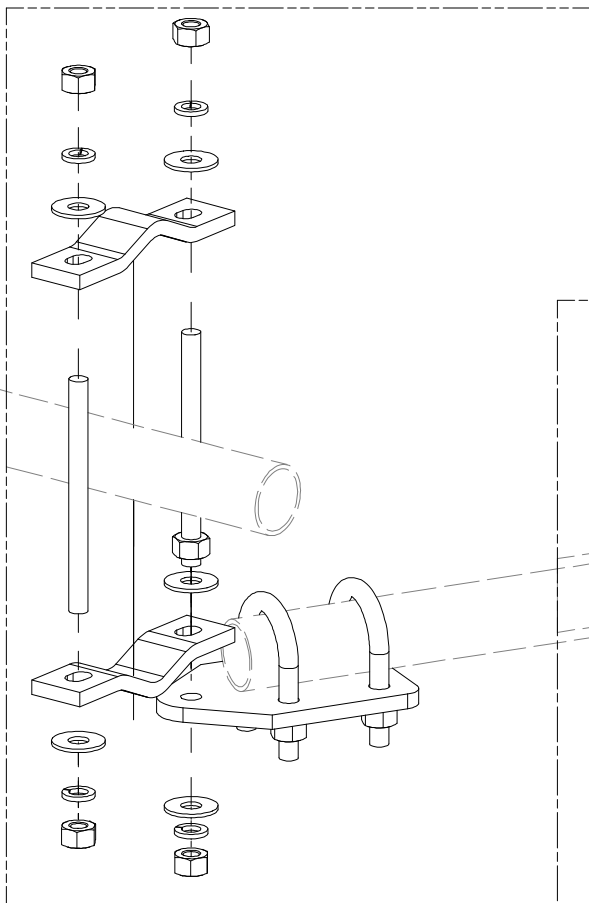
CPD NO.	DRAWN BY	ENG. APPROVAL
	CSL 1/6/2020	4/13/2021
CLASS	DRAWING USAGE	CHECKED BY
87	CUSTOMER	BMC 4/13/2021

SITE PRO 1
 A valmont COMPANY

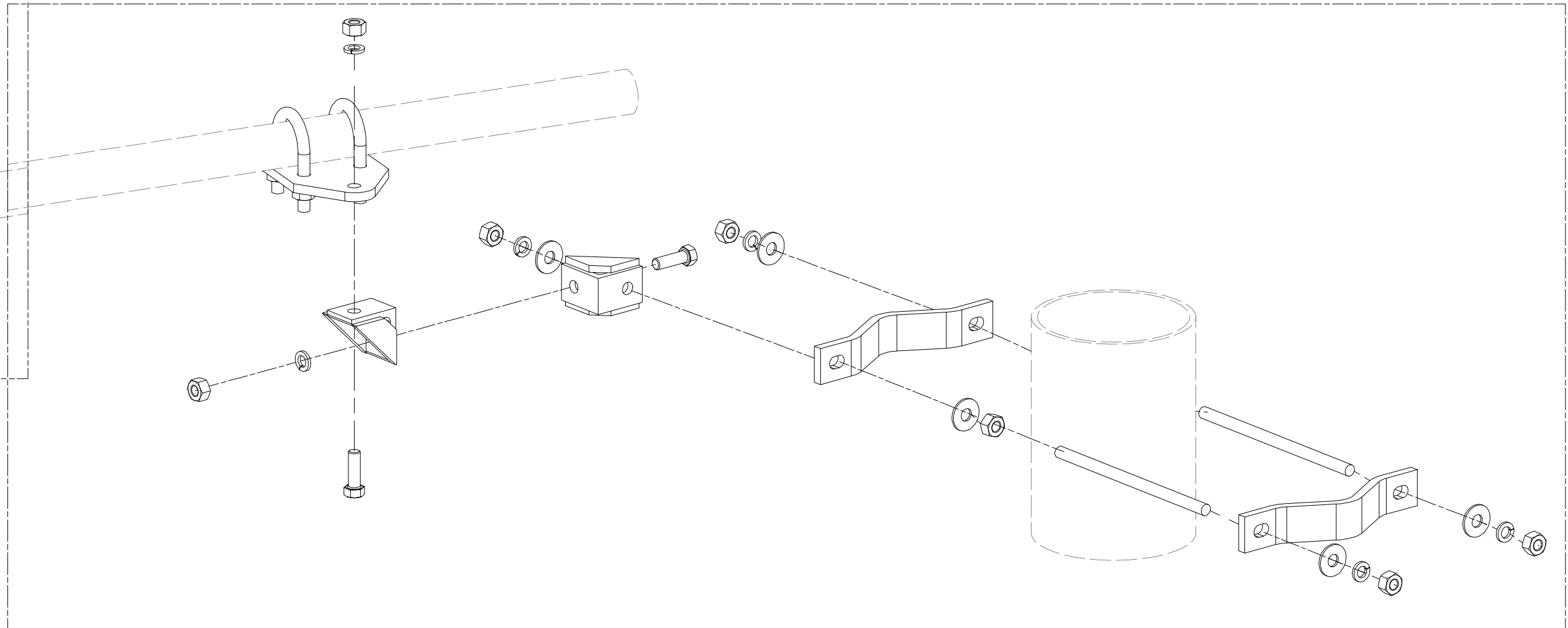
Engineering Support Team:
 1-888-753-7446

Locations:
 New York, NY
 Atlanta, GA
 Los Angeles, CA
 Plymouth, IN
 Salem, OR
 Dallas, TX

PART NO.	SPTB-NP
DWG. NO.	SPTB-NP



DETAIL A
P-SPTB-F



DETAIL B
P-SPTB-B

**SEE PAGE 3 FOR
HARDWARE DETAILS**

TOLERANCE NOTES

TOLERANCES ON DIMENSIONS, UNLESS OTHERWISE NOTED ARE:
 SAWED, SHEARED AND GAS CUT EDGES ($\pm 0.030''$)
 DRILLED AND GAS CUT HOLES ($\pm 0.030''$) - NO CONING OF HOLES
 LASER CUT EDGES AND HOLES ($\pm 0.010''$) - NO CONING OF HOLES
 BENDS ARE $\pm 1/2$ DEGREE
 ALL OTHER MACHINING ($\pm 0.030''$)
 ALL OTHER ASSEMBLY ($\pm 0.060''$)

PROPRIETARY NOTE:
 THE DATA AND TECHNIQUES CONTAINED IN THIS DRAWING ARE PROPRIETARY INFORMATION OF VALMONT INDUSTRIES AND CONSIDERED A TRADE SECRET. ANY USE OR DISCLOSURE WITHOUT THE CONSENT OF VALMONT INDUSTRIES IS STRICTLY PROHIBITED.

DESCRIPTION
**SLIDING PIPE
 TIE BACK ASSEMBLY
 (NO PIPE)**

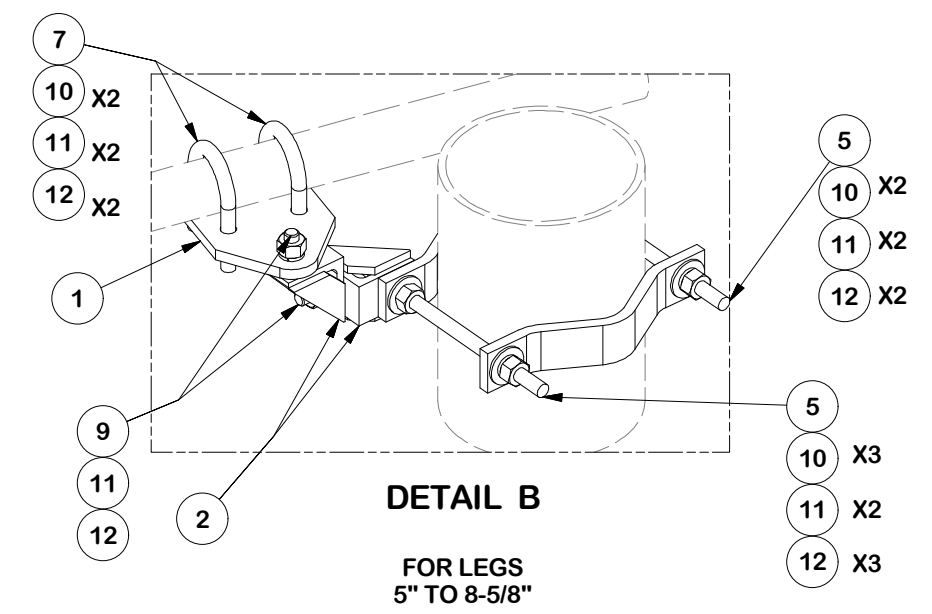
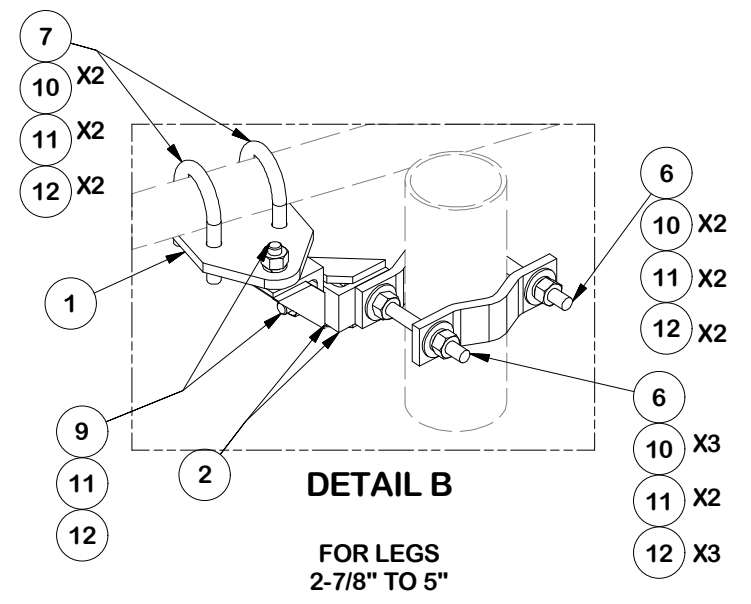
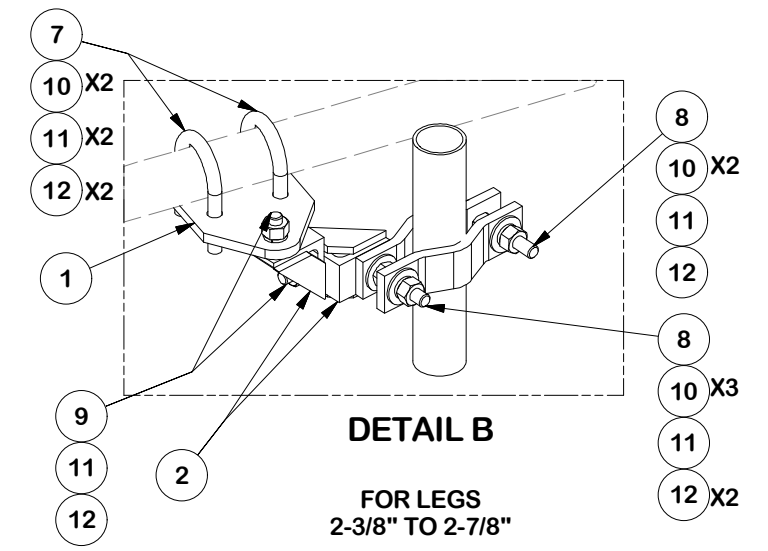
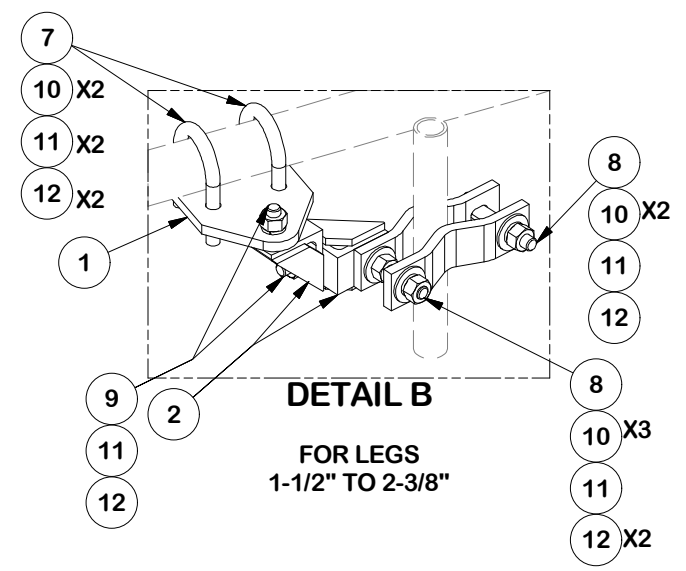
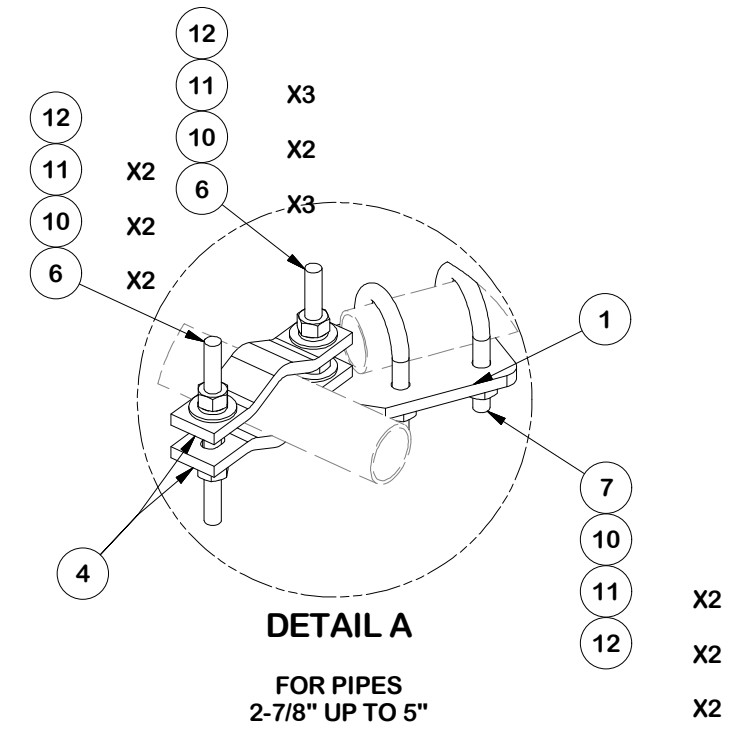
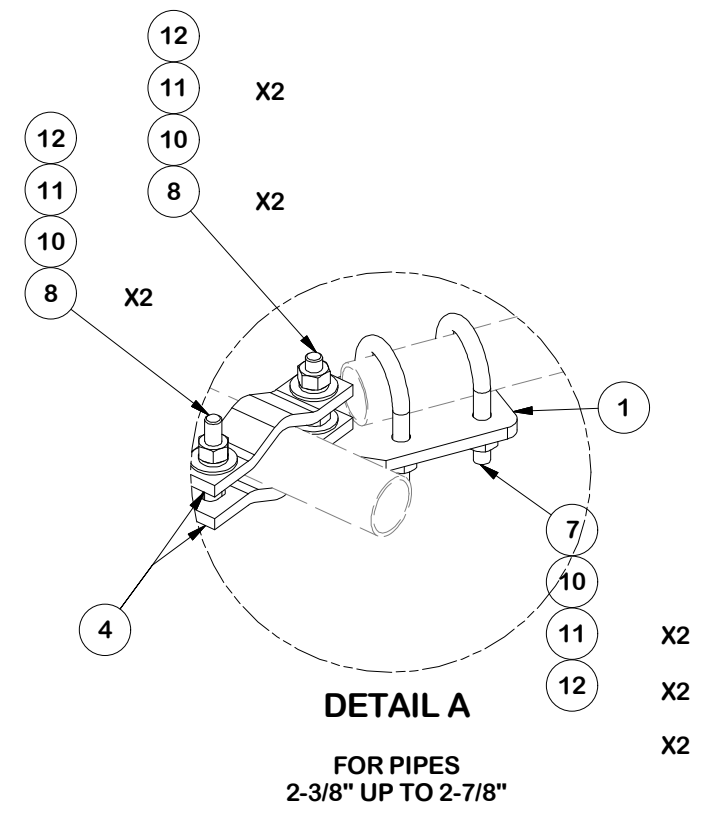
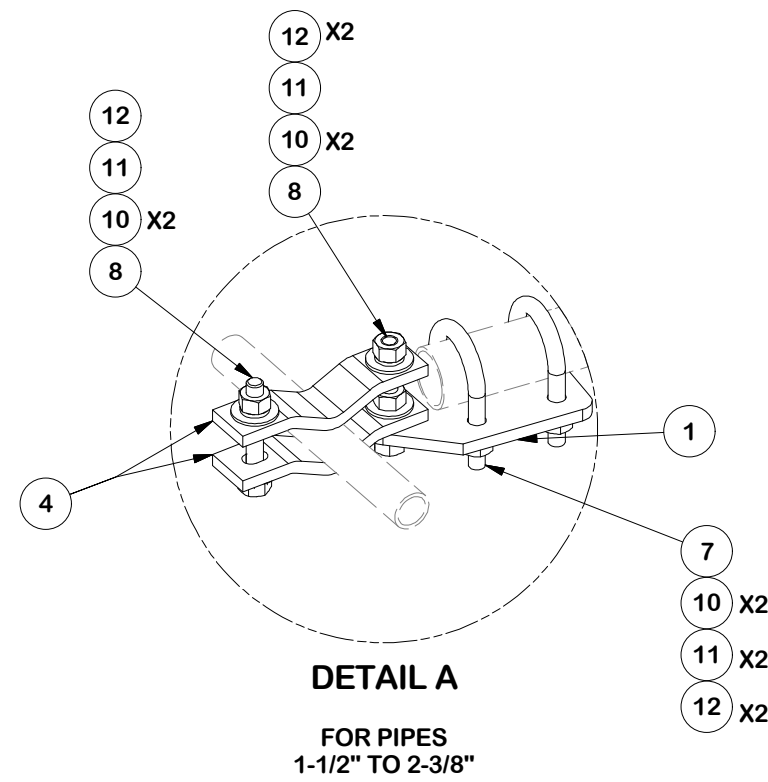
CPD NO.	DRAWN BY CSL	1/6/2020	ENG. APPROVAL 4/13/2021
CLASS 87	SUB 02	DRAWING USAGE CUSTOMER	CHECKED BY BMC
			4/13/2021



Locations:
 New York, NY
 Atlanta, GA
 Los Angeles, CA
 Plymouth, IN
 Salem, OR
 Dallas, TX

Engineering
 Support Team:
 1-888-753-7446

PART NO.	SPTB-NP
DWG. NO.	SPTB-NP



TOLERANCE NOTES

TOLERANCES ON DIMENSIONS, UNLESS OTHERWISE NOTED ARE:
 SAWED, SHEARED AND GAS CUT EDGES ($\pm 0.030"$)
 DRILLED AND GAS CUT HOLES ($\pm 0.030"$) - NO CONING OF HOLES
 LASER CUT EDGES AND HOLES ($\pm 0.010"$) - NO CONING OF HOLES
 BENDS ARE $\pm 1/2$ DEGREE
 ALL OTHER MACHINING ($\pm 0.030"$)
 ALL OTHER ASSEMBLY ($\pm 0.060"$)

PROPRIETARY NOTE:
 THE DATA AND TECHNIQUES CONTAINED IN THIS DRAWING ARE PROPRIETARY INFORMATION OF VALMONT INDUSTRIES AND CONSIDERED A TRADE SECRET. ANY USE OR DISCLOSURE WITHOUT THE CONSENT OF VALMONT INDUSTRIES IS STRICTLY PROHIBITED.

DESCRIPTION
**SLIDING PIPE
 TIE BACK ASSEMBLY
 (NO PIPE)**

CPD NO.	DRAWN BY CSL	ENG. APPROVAL 4/13/2021
CLASS 87	SUB 02	CHECKED BY BMC
DRAWING USAGE CUSTOMER		DATE 4/13/2021

SITE PRO 1
 A valmont COMPANY

Engineering Support Team:
 1-888-753-7446

Locations:
 New York, NY
 Atlanta, GA
 Los Angeles, CA
 Plymouth, IN
 Salem, OR
 Dallas, TX

PART NO. SPTB-NP	PAGE 3 OF 3
DWG. NO. SPTB-NP	