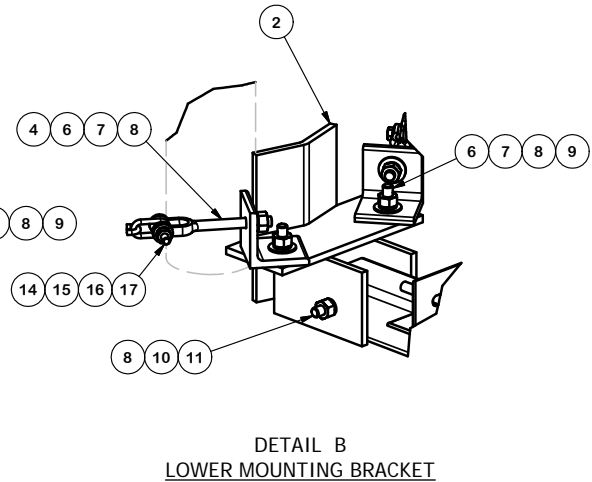
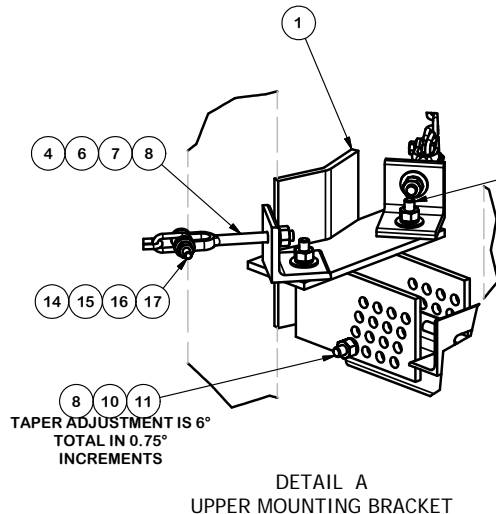


PARTS LIST						
ITEM	QTY	PART NO.	PART DESCRIPTION	LENGTH	UNIT WT.	NET WT.
1	3	X-UCMMH	TOP CHAIN MOUNT BRACKET		16.17	48.50
2	3	X-UCMSH	LOWER CHAIN MOUNT BRACKET		14.14	42.41
3	12	SHCM-T	CHAIN MOUNT TIGHTENER BRACKET	3.000 in	1.84	22.09
4	12	JB4	JAW BOLT GALV. 1/2" x 6"		0.51	6.11
5	6	GC40317	1/4" x GR40 GALV. CHAIN 3.17'		0.91	5.46
6	48	G12NUT	1/2" HDG HEAVY 2H HEX NUT		0.07	3.44
7	48	G12FW	1/2" HDG USS FLATWASHER		0.03	1.64
8	54	G12LW	1/2" HDG LOCKWASHER		0.01	0.75
9	12	G1202	1/2" x 2" HDG HEX BOLT GR5	2	0.18	2.11
10	6	A12NUT	1/2" HDG A325 HEX NUT		0.07	0.43
11	6	A1205	1/2" x 5" A325 HDG BOLT	5 in.	0.34	2.06
12	6	X-UAPM	UNIVERSAL ANGLE TUBE 9"		9.31	55.86
13	12	X-UB1458	1/2" X 4-5/8" X 7" X 3" GALV U-BOLT		0.97	11.66
13	12	X-UB1212	1/2" X 2-1/2" X 4-1/2" X 2" GALV. U-BOLT		0.66	7.88
14	12	G38212	3/8" x 2-1/2" HDG HEX BOLT GR5		0.10	1.23
15	12	G38FW	3/8" HDG USS FLATWASHER		0.01	0.14
16	12	G38LW	3/8" HDG LOCKWASHER		0.01	0.08
17	12	G38NUT	3/8" HDG HEAVY 2H HEX NUT		0.03	0.41
					TOTAL WT. #	221.00



REV	DESCRIPTION OF REVISIONS	CPD	BY	DATE
A	REVISED DETAILS		RCH	3/10/2010
REVISION HISTORY				

TOLERANCE NOTES

TOLERANCES ON DIMENSIONS, UNLESS OTHERWISE NOTED ARE:
 SAWED, SHEARED AND GAS CUT EDGES ($\pm 0.030"$)
 DRILLED AND GAS CUT HOLES ($\pm 0.030"$) - NO CONING OF HOLES
 LASER CUT EDGES AND HOLES ($\pm 0.010"$) - NO CONING OF HOLES
 BENDS ARE $\pm 1/2$ DEGREE
 ALL OTHER MACHINING ($\pm 0.030"$)
 ALL OTHER ASSEMBLY ($\pm 0.060"$)

PROPRIETARY NOTE:
 THE DATA AND TECHNIQUES CONTAINED IN THIS DRAWING ARE PROPRIETARY INFORMATION OF VALMONT INDUSTRIES AND CONSIDERED A TRADE SECRET. ANY USE OR DISCLOSURE WITHOUT THE CONSENT OF VALMONT INDUSTRIES IS STRICTLY PROHIBITED.

DESCRIPTION 1'-0" STAND-OFF, TRIPLE SECTOR, TAPER ADJUSTABLE CHAIN MOUNT, SITE PRO 1	
CPD NO.	DRAWN BY RH18 3/10/2010
CLASS	ENG. APPROVAL
81	CHECKED BY BMC 3/15/2010
SUB	DRAWING USAGE CUSTOMER
01	

 A valmont COMPANY	Locations: New York, NY Atlanta, GA Los Angeles, CA Plymouth, IN Salem, OR Dallas, TX
	Engineering Support Team: 1-888-753-7446
PART NO.	TCHM3
DWG. NO.	TCHM3