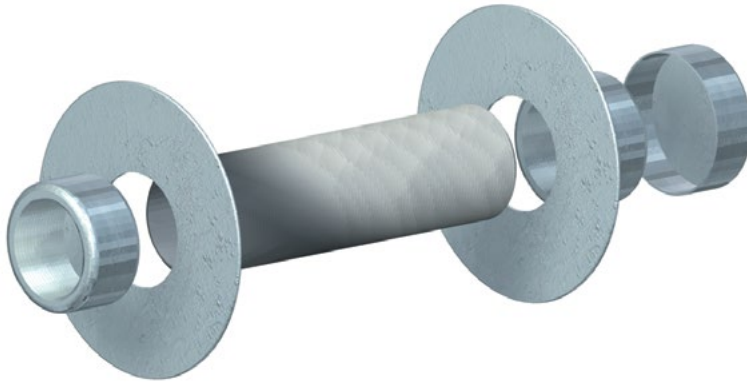


TEP20: Tube Entry with 4" Port



Features:

- Provides a single entry port for running feedlines through a wall or roof
- Includes two sealant retainer rings for weatherproofing

Construction:

- Threaded PVC conduit (3-3/8" OD, 2-3/4" ID)
- 9" OD aluminum retainer rings, aluminum nuts

Design Criteria:

- Use with a 4" boot to weatherproof feedline(s) at wall or roof entrances
- For a more finished appearance a boot can be used on the interior as well
- Can be used for multiple feedlines when used with boots with multi-hole inserts
- For use on walls up to 20" thick; PVC tube can be cut to length for thinner applications

Part #	Max Wall Thickness
TEP20	1' 8"

TEP20 and CE09: Tube Entry Kits

PRODUCT DESCRIPTION

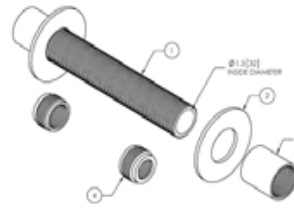
Tube Entry Kits provide a single port entry for cables in applications where space limits the use of multiple port entry systems.

MATERIAL LIST

- (1) Entry Port Tube
- (2) Galv. Flat Washer
- (2) Galv. Steel Conduit Coupling
- (2) Reducing Bushing

NOTICE

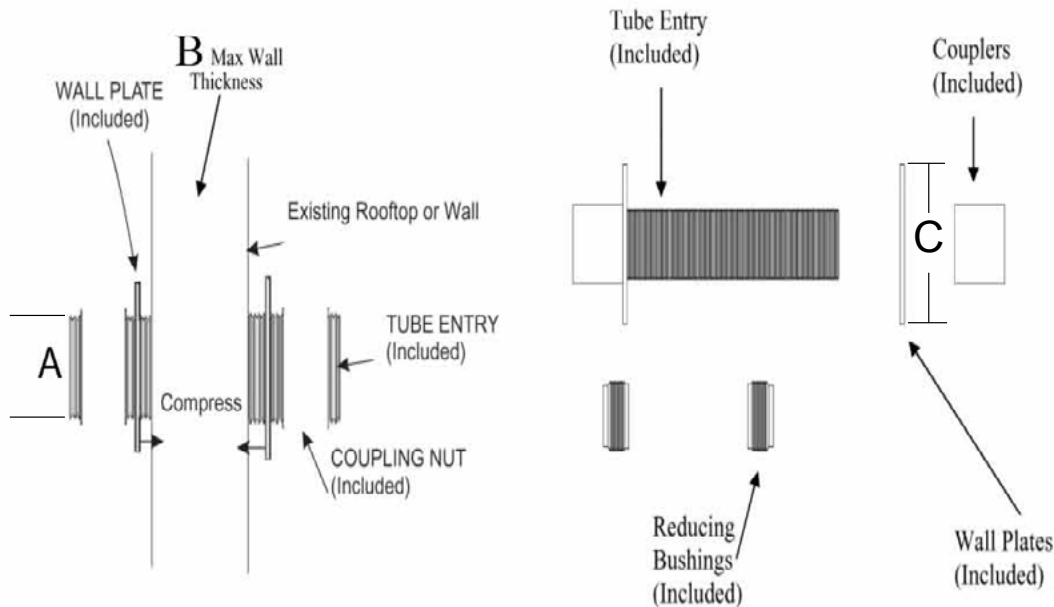
Installation of this product should only be performed by trained, qualified and experienced personnel. Installation instructions for this product should be read thoroughly before installation is performed. The manufacturer and supplier of this product disclaims any liability or responsibility for the results of improper or unsafe installation practices.



REQUIRED TOOLS

Necessary drill or saw for wall surface being penetrated.

TYPICAL APPLICATIONS



TUBE ENTRY KITS						
Part #	Description	A	B	C	Weight (lbs)	Kit Qty.
CE09	Tube Entry Port Kit 11"	1-1/4" Tube	9"	3.75"	2.5	Each
TEP20	Tube Entry Port Kit 24"	4" Tube	1' 8"	9"	3.7	Each